

#whdentalwerk



video.wh.com

Now at  
your dealer  
or [wh.com](http://wh.com)



**Reliable.  
Efficient.  
Precise.**

Turbines



alegra

R0-54

**TRIPLE SPRAY**

for optimal cooling of the treatment site from all sides.

**SMALL TURBINE HEAD**

for optimal view of the treatment site.

**OPTIMAL LED POSITION**

for optimal view and illumination of the treatment site.

**PUSH-BUTTON CHUCKING SYSTEM**

for simple, rapid bur changes with low actuating force.

**HIGH TORQUE**

for fast removal of tooth structure.

**CERAMIC BALL BEARINGS**

for extremely quiet operation and a long service life.

**PRECISION MANUFACTURE**

for vibration-free and quiet operation.

**WATER FILTER**

for perfect spray function.

**INNOVATIVE GENERATOR SYSTEM**

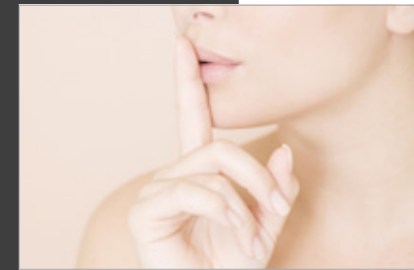
in the Roto Quick quick coupling for use with Alegra light turbines.

# Long service life and extremely quiet operation

Discover the new Alegra turbines with extremely quiet operation for daily use in your practice. Designed to meet your needs with state-of-the-art technology. Made in Austria: For your best treatment results.



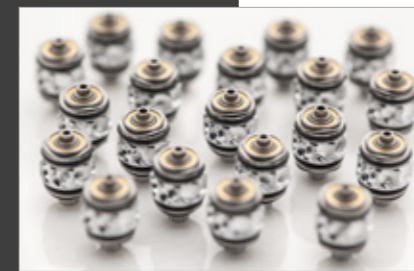
**Long service life**  
Ceramic ball bearings guarantee minimum wear. Particularly with optimum care and maintenance!



**Quiet**  
Alegra turbines offer top quality, vibration-free, quiet operation thanks to precision manufacture.



**Replaceable water filter**  
Prevents dirt particles from entering the turbine.



**Your reliable partner**  
This combination makes W&H turbines a reliable partner when working on your patients.

**Up to the minute**

W&H is a dynamic and rapidly expanding company. We guarantee reliable support and outstanding service. Our recipe for success: innovative technologies, high quality material concepts, stringent quality criteria and many years of experience in the development of precision dental instruments.





**01**  
Fast and  
precise  
preparation



**02**  
Long  
service life



**03**  
Optimal  
view



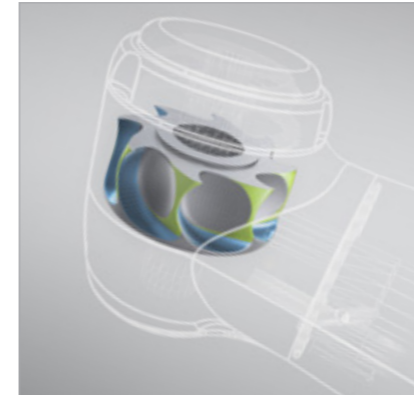
W&H Augmented Reality (AR) combines the real world and the virtual world – a unique experience. The future starts now!

**Experience Alegra in a new dimension!**

Download the »W&H AR« App to your smartphone or tablet PC free of charge from Google Play (for Android) or the Apple App Store. Open the App and hold your device 50 cm from the picture.

## Maximum efficiency and safety during treatment

The Alegra range of turbines offers high-end technology for top preparation results! Experience maximum efficiency during use combined with maximum safety: for you and your patients.



**Full steam ahead with the Power Blade rotor**

The optimized blade geometry allows higher rotor efficiency. For maximum torque and optimal power throughout preparation.



**Precision cooling**

The triple spray during treatment cools the treatment site from all sides and guarantees safety during treatment.



**Tailor-made turbines**

From hard-to-reach areas to fast removal of tooth structure: The right head size for every application.



**Simple bur changing**

Optimum balance between easy operation of the push-button and maximum retention force of the chucking system. No tools required!

**Patented hygienic head system**

The circulating air in the turbine head ensures no aerosol particles are sucked into the turbine as the rotor slows down.

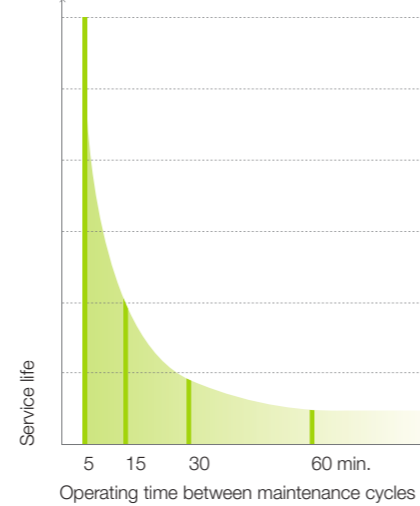


## Hygiene & maintenance of your turbines

»The better the care, the longer the pleasure.« Regular cleaning and care of your instruments protects them against premature wear and unnecessary service costs.



### Short lubrication intervals – long service life



### For every application

W&H Service Oil F1 is a product of W&H research. It was developed hand in hand with the leading edge W&H drive technology. This oil gives you the security of knowing that you are providing your W&H products with the best possible lubrication.

### Perfect for manual lubrication

W&H Service Oil F1 in the spray can cleans and lubricates your turbines to guarantee troublefree use.

### Maintenance at the press of a button

Assistina 301 plus, Assistina 3x2, Assistina 3x3: The range of W&H cleaning and maintenance units provides the perfect preparation for sterilization from optimum oil service to automatic internal and external cleaning. And all in record time!

## Optimal view and independent LED

The integration of a generator in the Roto Quick quick coupling gives you a low-cost option of adding an LED turbine to your selection of Alegra turbines. The advantages for you: Flexibility in use and in hygienic preparation.



### Excellent ergonomics

Fatigue-free working thanks to easy 360° rotation of the turbine on the coupling, low overall weight and slender design.

### Further advantages at a glance

- › Integrated resuction stop: Prevents resuction of aerosol particles into the spray channel
- › Component replacement on site by the user
- › Thermo washer disinfected
- › Sterilizable up to 135 °C



### LED turbine + quick coupling with generator = independent light

A generator in the Roto Quick quick coupling enables the use of light turbines on the turbine hose without a power supply.



### Optimal view

The position of the LED in the turbine head guarantees optimal view and illumination of the treatment site.

# Technical data



Turbines with LED Couplings with generator Turbines without light	TE-97 LQ* RQ-53 / RQ-54 TE-97 / TE-97 RM / TE-97 BC	TE-98 LQ* RQ-53 / RQ-54 TE-98 / TE-98 RM / TE-98 BC	TE-95 RM / TE-95 BC
<b>Light (LED version):</b>	LED and generator	LED and generator	–
<b>Light intensity (LED version):</b>	25,000 lux	25,000 lux	–
<b>Head size:</b>	Ø 10.4 mm	Ø 12.2 mm	Ø 12.2 mm
<b>Power**:</b>	16 W	18 W	18 W
<b>Speed:</b>	390,000 min <sup>-1</sup>	330,000 min <sup>-1</sup>	330,000 min <sup>-1</sup>
<b>Rotary instruments:</b>	FG bur, in acc. with ISO 1797-1, Ø 1.6 mm		
<b>Maximum working part diameter:</b>	2 mm	2 mm	2 mm
<b>Maximum length:</b>	21 mm	25 mm	25 mm
<b>Weight:</b>			
› Turbines with LED	46 g	48 g	
› Couplings with generator	26 g / 20 g	26 g / 20 g	
› Turbines without light	46 g / 47 g / 47 g	48 g / 50 g / 50 g	49 g / 49 g
<b>Operating pressure:</b>	2.2 – 2.8 bar (32 – 40 PSI)		
<b>Ball bearings:</b>	Ceramic	Ceramic	Steel
<b>Spray:</b>	Triple	Triple	Single
<b>Volume:</b>	62 dB (A)		

\* TE-97 LQ and TE-98 LQ turbines with LED are intended for use with W&H RQ-53 and RQ-54 Roto Quick couplings only.

\*\* Performance value applies at a rated pressure of 2.5 bar for turbines without light, of 2.8 bar for turbines with light and exhaust air pressure of max. 0.2 bar. When operating with the maximum permissible operating pressure of 2.8 bar, it is possible to reach 18 watt for TE-97, TE-97 RM, TE-97 BC and 20 watt for TE-98, TE-98 RM, TE-98 BC.

Pictures are for illustrative purposes only. Additional equipment and accessories shown are not included as standard.

20415 AEN Rev. 004 / 31.01.2019  
Subject to alterations