



## Installation Options

### A Air Source: Compressor 80-120 PSI

The Miniblaster is supplied with parts #525129 (an in-line high pressure stopcock and plastic Tee fitting for 1/4 inch polyethylene air tubing).

See hook up instruction below or in User Instruction Guide.

The Miniblaster can be disconnected from the air supply for autoclaving purposes or for transportation from one operatory to another by simply turning the stop cock lever through 90 degrees. The quick disconnect luer fitting can then be disconnected.

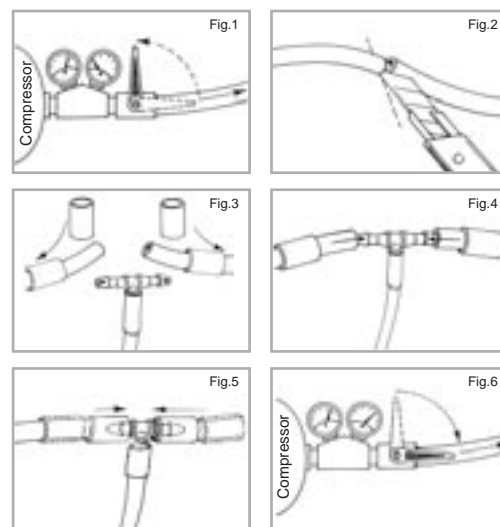
- Additional outlets can be supplied using the following Hook Up Kits:
  - # 505129 for installation in operatory or Lab, includes plastic Tee fitting for 1/4 inch polyethylene air tube, 1/16 inch tubing and in-line stop cock with luer fittings.
  - #505126 & #505128: An alternative system for operatory or Lab, includes plastic Tee fitting for 1/4 inch polyethylene air tube and male and female quick disconnects.
  - #505126: A second operatory outlet as above but with female quick disconnect only.
  - Kits # 505123 and # 505124 are for connecting to copper air tubing supply lines 1/4inch and 3/8inch respectively. This requires a serviceman to install

Air Source * 60-100 PSI	Description	Diagram	Item No.
Chairside or Lab inline for 1/4" Plastic Tubing	Standard Hook Up Kit with Plastic Tee incl. Stop-Cock		525129
Chairside or Lab inline for 1/4" Plastic Tubing	Male Quick Disconnect and Female Quick Disconnect with Plastic Tee		505126 505128
Chairside or Lab inline for 1/4" Copper Tubing	Male Quick Disconnect and Female Quick Disconnect with 1/4" Brass Tee		505123 505128
Chairside or Lab inline for 3/8" Cooper Tubing	Male Quick Disconnect and Female Quick Disconnect with 3/8" Brass Tee		505124 505128
From connector to Female Quick Disconnect	Male Quick Disconnect for Miniblaster Line		505128

#### Hook-up instructions for Kits #505129 or #505126 in operatory or Lab

(See diagram supplied)

- 1 Locate the air pressure supply line, usually located in the utility junction box. This is usually a 1/4 inch polyethylene tube and carries unregulated air directly from the compressor, with an inlet pressure of 80-100 p.s.i.
- 2 Turn off the air supply. (fig.1)
- 3 Cut the air supply tube at a position close to the desired working area. (fig.2)
- 4 Thread the 2 wider tube-retaining sleeves supplied, onto the cut ends of the air tube and the narrow sleeve over the Miniblaster air line. (fig.3)
- 5 Insert the wider ends of the supplied Tee fitting firmly and fully into the cut ends of the air tube. (fig.4)
- 6 Slide the retaining tubes down over the tubes to secure them to the Tee fitting. (fig.5)
- 7 Attach the thin Miniblaster air supply line onto the remaining narrow fitting of the Tee fitting.
- 8 Slide the narrow retaining sleeve down over the tubing to secure it to the Tee fitting. (fig.6)
- 9 Open the air supply (fig.6)



Cat. No. 185140

Alternatively, kits no #505126 and #505128 can be used to install a male and female quick disconnect system.

In this system the Tee fitting is connected to a female quick disconnect.

The female disconnect contains an automatic shut off when the male disconnect is removed. It contains locking units so that if desired, it can be panel mounted.

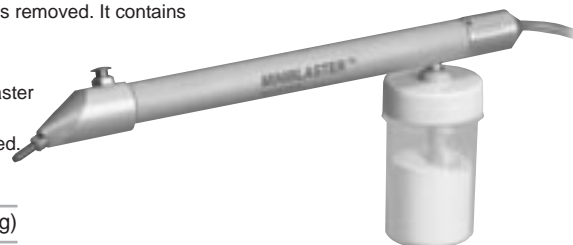
Install kit # 505126 in the same way as for kit #505129

Install the male quick disconnect supplied to the thin air supply line of the Miniblaster

Special fittings other than for standard 1/4 inch polyethylene tubing may be needed. Please contact your supplier who can supply a whole range of fittings.

## MiniBlaster

Autoclavable Clinical Sandblaster



### B Air Source: Dental unit 35-60 PSI (standard handpiece tubing)

	Connector	Description	Item No.
<p>Ideally the Sandblaster is connected directly to the compressor at 80-120 PSI, however it can simply be connected to the high speed or low speed tubing just like a hand piece using one of the special adaptors available and can then be operated by the standard foot control of the dental unit.</p> <p>A range of connections are available for the most popular dental units such as Kavo®, Sirona® (Siemens®) &amp; W&amp;H® in addition to standard 2-3 hole and 4 hole connectors.</p>		For 2-3 hole connectors.	505112
		For 4 hole connectors.	505111
		Suitable for Sirona® (Siemens) dental units.	505114
		Suitable for Kavo® dental units.	505113
		Suitable for W&H® dental units.	505117