

IT'S TIME FOR  
SUPERIOR  
COMFORT

*Bliss*  
by Acteon



**ACTEON**

Bliss  
by Acteon



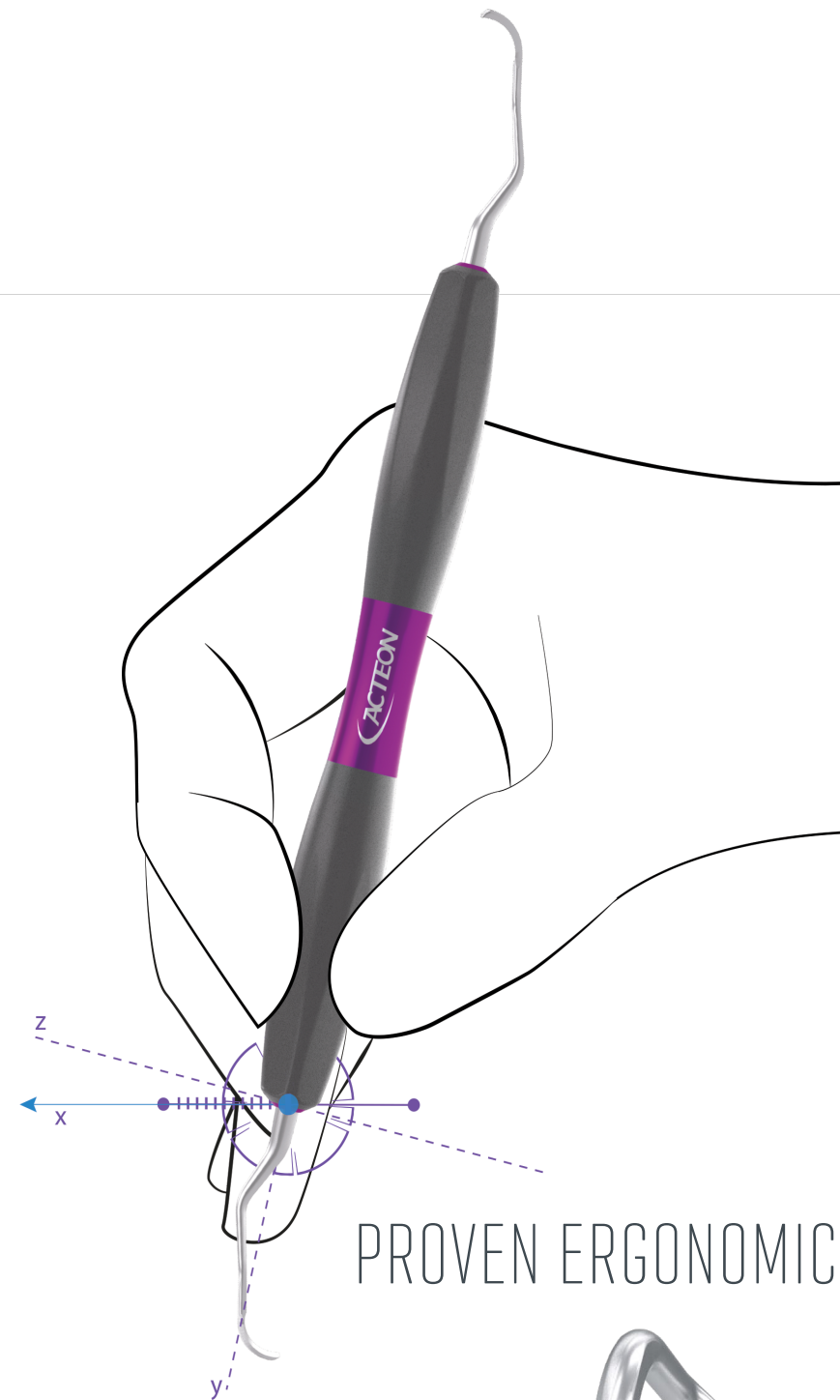
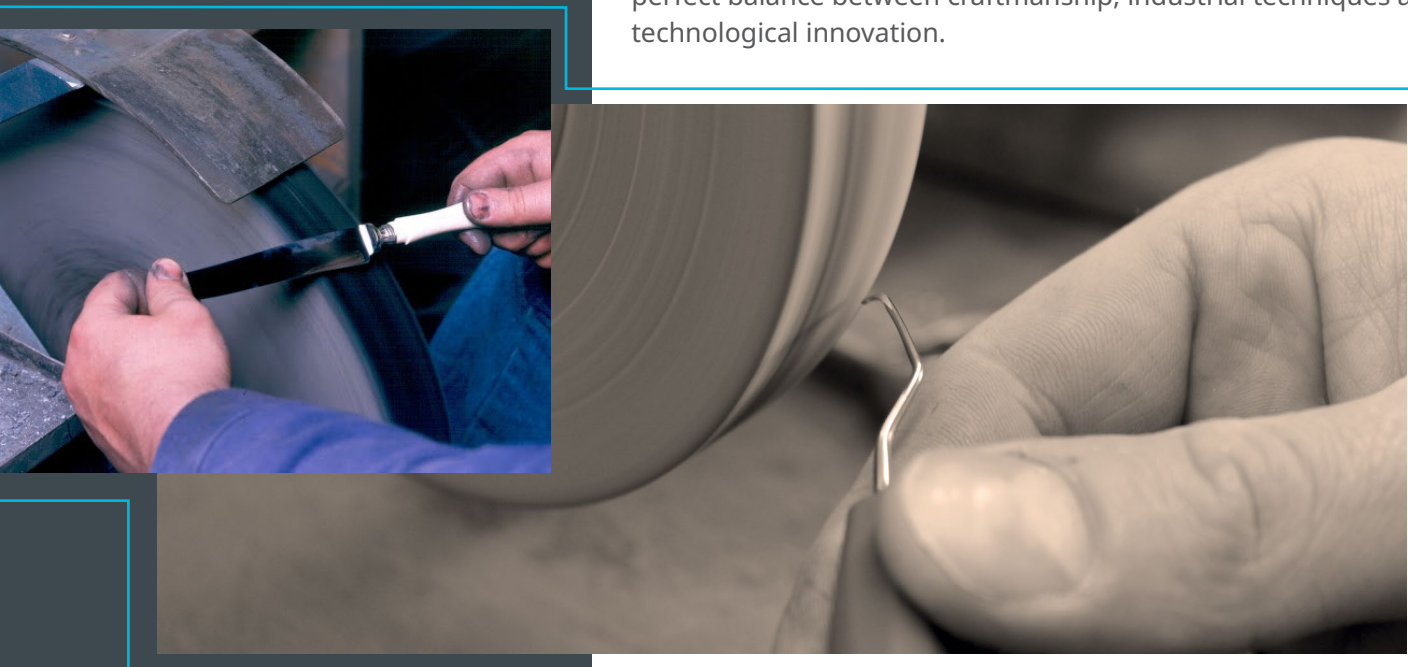
THE NEXT  
GENERATION  
OF MANUAL  
INSTRUMENTS

PRECISE, HANDCRAFTED  
SHARPNESS WITH AN  
HEIR OF FRENCH CUTLERY

The working part of Bliss™ curettes and scalers offer an optimal hardness for sharp instruments and excellent edge retention. To reach this level of excellence, ACTEON follows the cutlery traditions of Thiers, the world capital of fine cutlery. ACTEON has integrated the ancestral cutlery and metallic expertise to develop high quality manual instrumentation. ACTEON has reached the perfect balance between craftsmanship, industrial techniques and technological innovation.

1 - "The effects of periodontal curette handle weight and diameter on arm pain". D.Rempel; D.L.Lee; K.Dawson; P.Loomer. JADA 143(10) - October 2012

Up to  
**61%** of dentists and hygienists experience hand, wrist or arm pain. Dental practitioners ranked first in occupations affected by carpal tunnel syndrome (CTS)<sup>1</sup>.



PROVEN ERGONOMIC DESIGN AND COMFORT

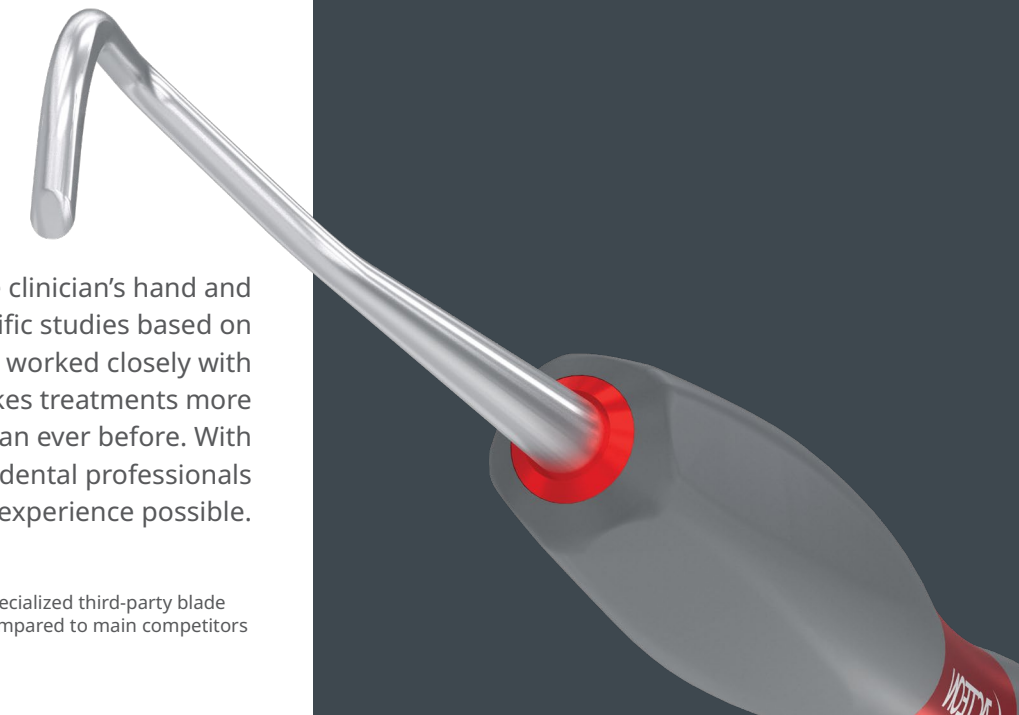
To find the perfect balance between the clinician's hand and the instrument, ACTEON used scientific studies based on dental instrument ergonomics. We also worked closely with clinicians to create a handle that makes treatments more comfortable, reliable and effective than ever before. With Bliss™, ACTEON exceeds expectations of dental professionals for the best treatment experience possible.

\* CATRA study, Cutlery & Allied Research Association, a specialized third-party blade laboratory, to measure the sharpness of Bliss scalers compared to main competitors

LIGHTWEIGHT  
**15g**

UNIQUE  
BLISS GRIP  
TECHNOLOGY

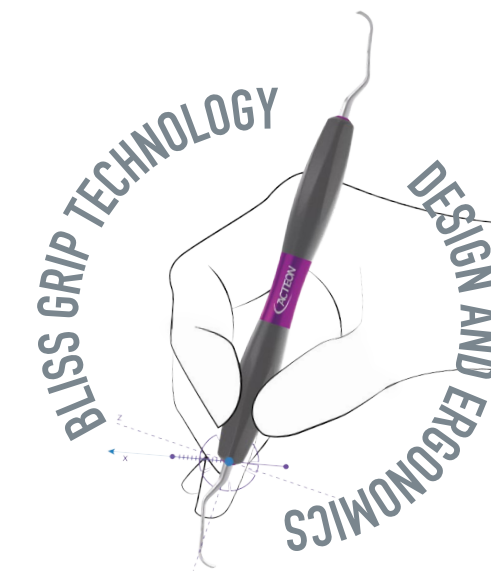
**40%**  
SHARPER THAN  
COMPETITORS\*





# REVOLUTIONARY COMFORT AT YOUR FINGERTIPS

## BLISS GRIP TECHNOLOGY EVERY FEATURE MATTERS



# 15g

ULTRA LIGHTWEIGHT

### SOFT & FIRM GRASP

- Effective silicone grip surface
- No spring effect, no slip surface

### BETTER ERGONOMICS

- Handle with flat edges makes instruments easy to roll
- High tactile sensitivity

### REDUCTION OF HAND FATIGUE<sup>1</sup>

- Optimum diameter of the handle for pinching force reduction<sup>1</sup>
- Lightweight: 15g among the lightest instrument on the market

100% APPROVED  
BY  
PRACTITIONERS<sup>2</sup>

LESS  
pinch  
force

LESS  
muscle  
load

### SUPERIOR COMFORT

*"The large grip provides increased comfort, quick adaptation, easy rotation and reduced hand fatigue"*

Karen VICHOS, RDH, USA



<sup>1</sup> -The effects of periodontal instrument handle on hand muscle load and pinch force, D. Rempel; D. Lee; K. Dawson; P. Loomer; JADA 143 (10) - October 2012  
<sup>2</sup> - Internal field evaluation on 20 practitioners from 8 different countries. 100% answered that Bliss handle was comfortable.

# EXCEPTIONAL PRECISION & QUALITY

SUPERIOR  
SHARP  
EDGES

SURGICAL  
GRADE  
STEEL

LONG  
LASTING  
SHARPNESS

## HIGH LEVEL OF EXPERTISE

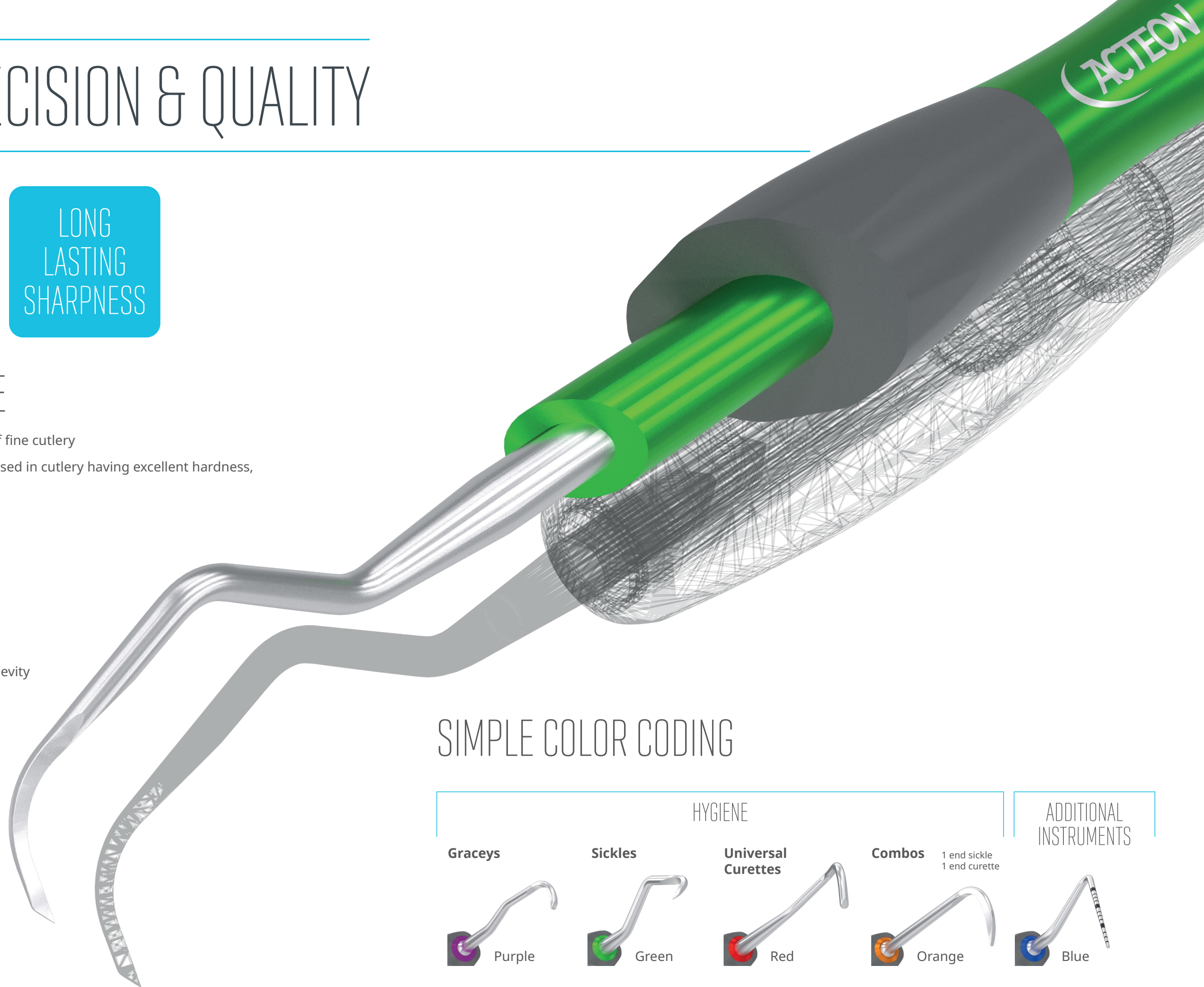
- ▶ Manufactured in Thiers, France, the world capital of fine cutlery
- ▶ Premium, surgical grade stainless steel, the same used in cutlery having excellent hardness, wear and corrosion resistance
- ▶ Hand-sharpened by well-trained artisan craftsmen

## ADVANCED HARDNESS AND STURDINESS

- ▶ Advanced treatments applied for strength and longevity
- ▶ Resistant to wear
- ▶ Lasting sharpness

## ENHANCED COMFORT ACHIEVED

- ▶ Extreme sharpness requires less force
- ▶ Less force means less muscle fatigue
- ▶ Less force means comfortable scaling



## SIMPLE COLOR CODING

**HYGIENE**

Instrument Type	Color
Graceys	Purple
Sickles	Green
Universal Currettes	Red
Compos (1 end sickle, 1 end curette)	Orange
ADDITIONAL INSTRUMENTS	Blue



# GRACEY CURETTES

## FEEL THE DIFFERENCE...

Based on the original standards of Gracey curette designs, ACTEON worked closely with dental hygienists to design the shanks and working ends of each instrument to maximize their performance and efficiency.



**Gracey 1-2**  
(Ref. 402.015I)



**Gracey 5-6**  
(Ref. 402.055I)



**Gracey 11-12**  
(Ref. 402.115I)



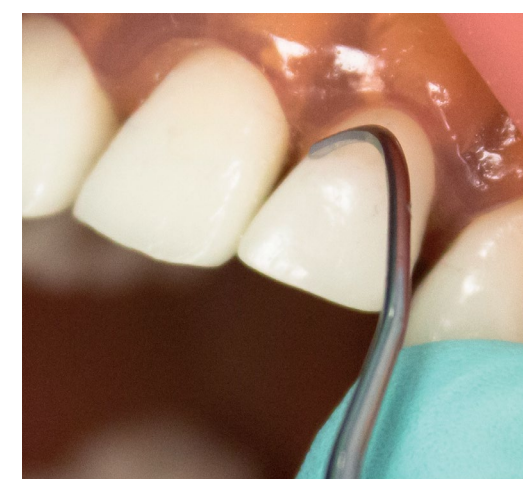
**Gracey 13-14**  
(Ref. 402.135I)



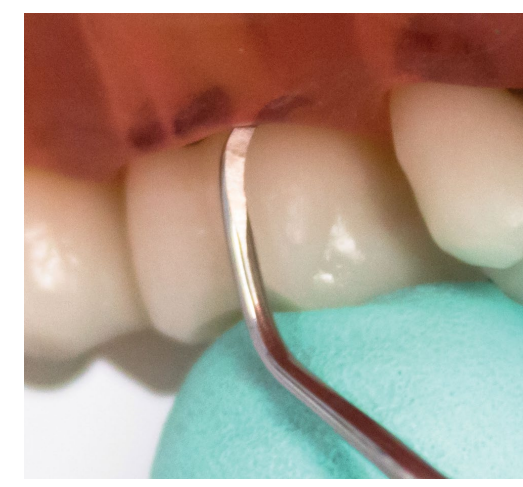
**Gracey 15-16**  
(Ref. 402.155I)



**Gracey 17-18**  
(Ref. 402.175I)



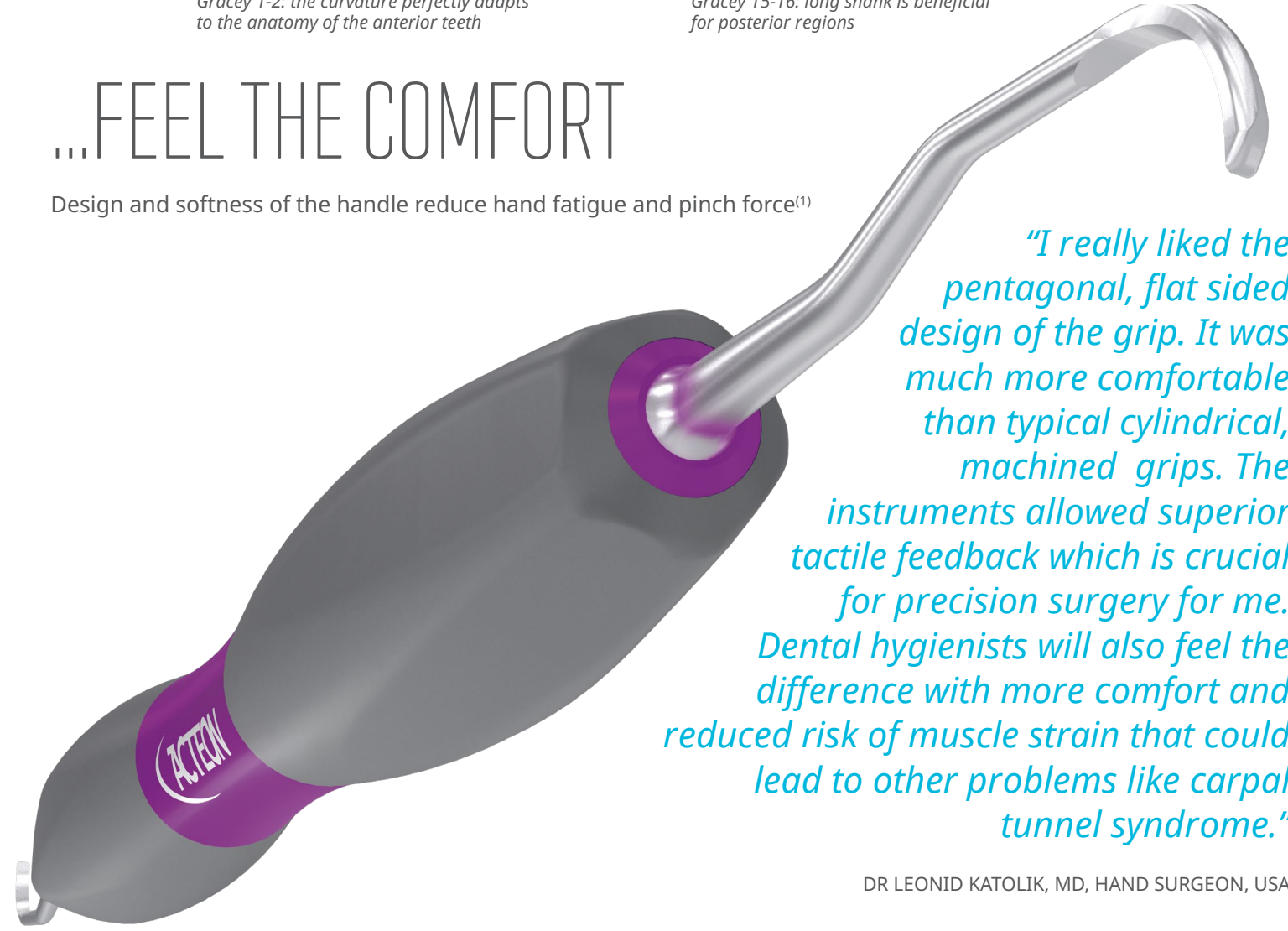
Gracey 1-2: the curvature perfectly adapts to the anatomy of the anterior teeth



Gracey 15-16: long shank is beneficial for posterior regions

## ...FEEL THE COMFORT

Design and softness of the handle reduce hand fatigue and pinch force<sup>(1)</sup>



*"I really liked the pentagonal, flat sided design of the grip. It was much more comfortable than typical cylindrical, machined grips. The instruments allowed superior tactile feedback which is crucial for precision surgery for me. Dental hygienists will also feel the difference with more comfort and reduced risk of muscle strain that could lead to other problems like carpal tunnel syndrome."*

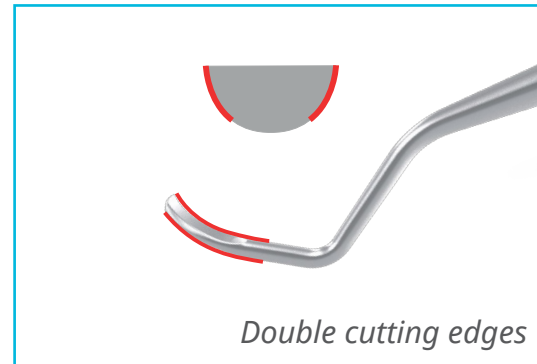
DR LEONID KATOLIK, MD, HAND SURGEON, USA

(1) "The effects of periodontal curette handle weight and diameter on arm pain". D.Rempel; D L.Lee; K.Dawson; P.Loomer. JADA 143(10) – October 2012

# UNIVERSAL CURETTES

YOU DESERVE  
THE BEST COMFORT...

Bliss grip technology revolutionizes ergonomics.



**BARNHART 5-6**  
(Ref. 408.05SI)



**COLUMBIA 4L-4R**  
(Ref. 405.04SI)



**COLUMBIA 13-14**  
(Ref. 405.13SI)

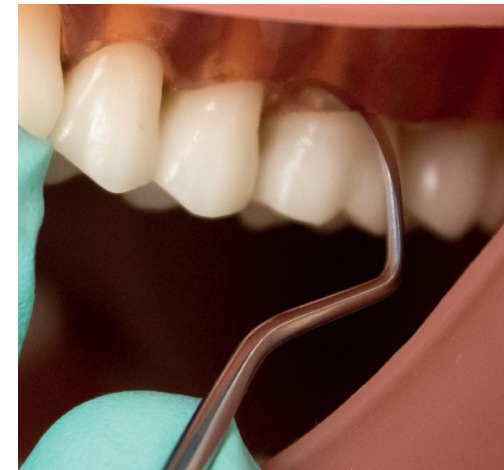


**LANGER 5-6**  
(Ref. 406.06SI)



*"I have been a practicing clinician for over 30 years.  
Using ACTEON scalers has made my job as a hygienist fun again."*

RoseAnn GARNELLO, RDH, USA



*Barnhart 5-6: Perfect angulation and working end  
for posteriors and mesial surfaces*



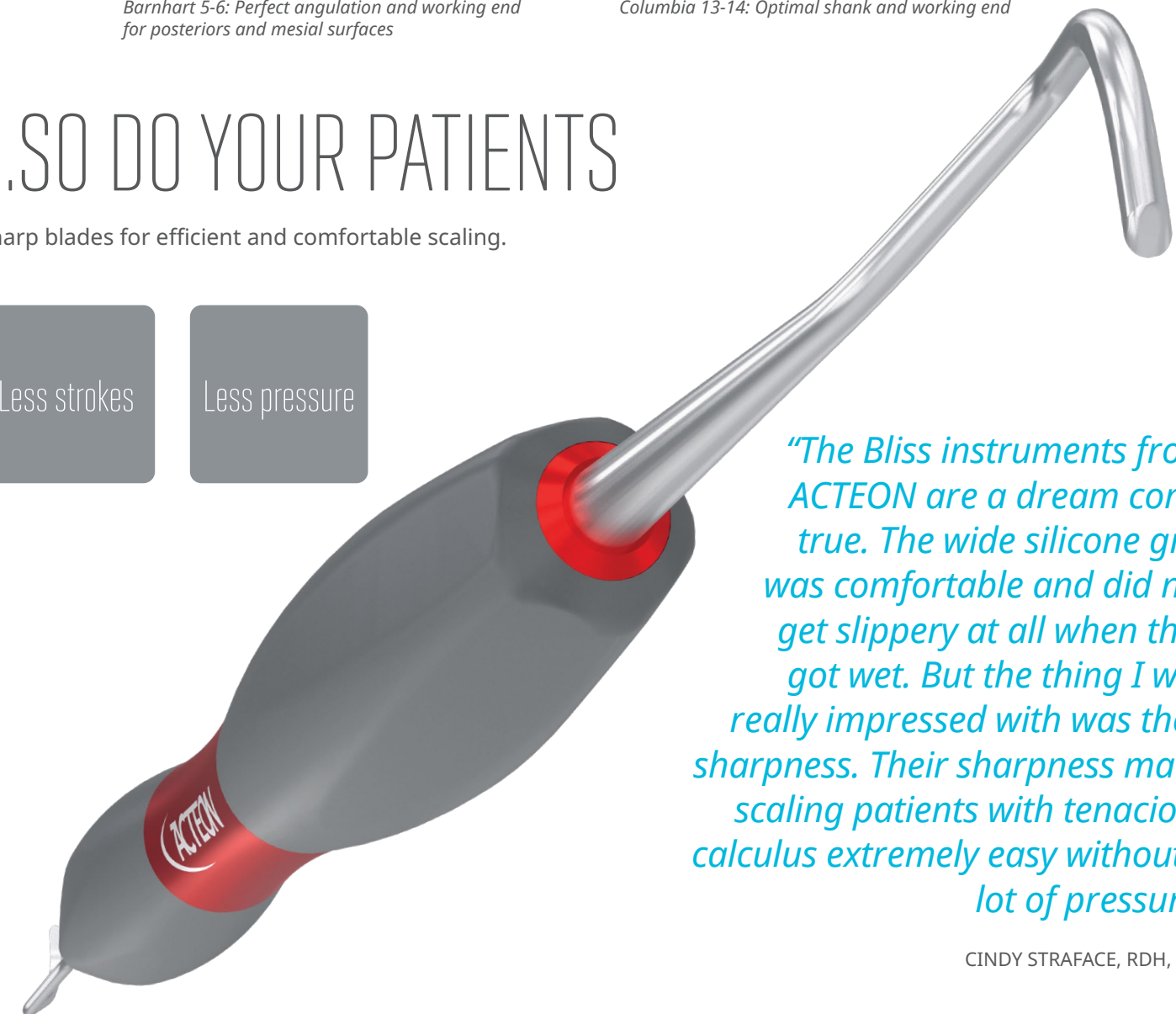
*Columbia 13-14: Optimal shank and working end*

...SO DO YOUR PATIENTS

Sharp blades for efficient and comfortable scaling.

Less strokes

Less pressure



*"The Bliss instruments from  
ACTEON are a dream come  
true. The wide silicone grip  
was comfortable and did not  
get slippery at all when they  
got wet. But the thing I was  
really impressed with was their  
sharpness. Their sharpness made  
scaling patients with tenacious  
calculus extremely easy without a  
lot of pressure"*

CINDY STRAFACE, RDH, USA



# SICKLES



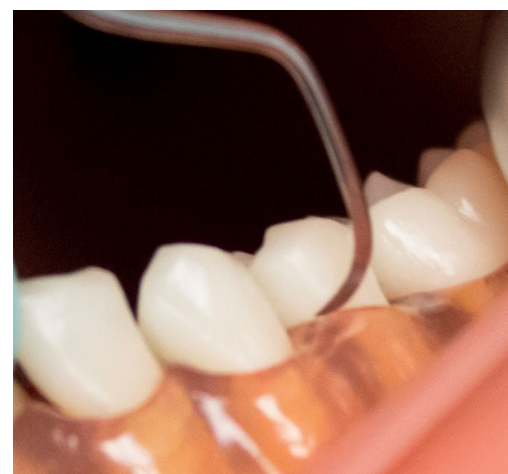
## ACCESS TO TIGHT INTERPROXIMAL SURFACES

Bliss sickle scalers are designed to deliver interproximal access for anterior and posterior teeth. The thinner terminal end of the blade increases access in hard to reach areas.



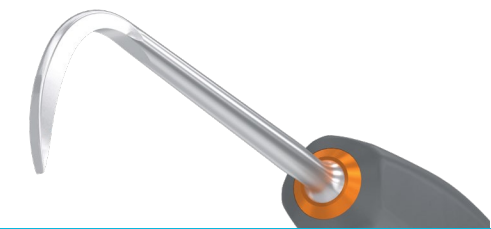
*“With the M23 scaler, I decreased hand instrumentation time with patients”*

Karen VICHOS, RDH, USA



M23: Effective in posterior due to contra-angle bend and thin blade

# COMBOS

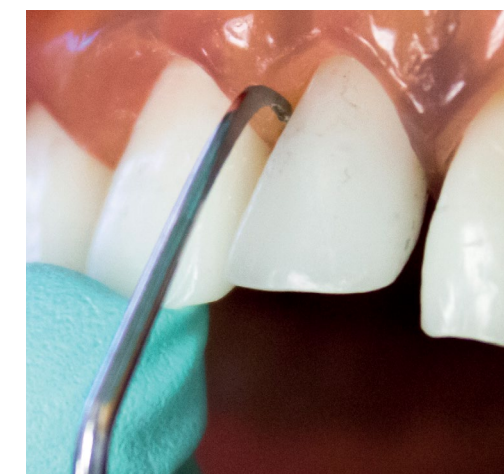


## DOUBLE EFFICIENCY DOUBLE PERFORMANCE

Find the benefit of a thin sickle scaler and a universal Langer 5 curette.



The mini version is dedicated for tight areas and better interproximal access.



H5-L5: Easy to place and to adapt especially on all anteriors

# COMFORT AVAILABLE FOR DENTAL PROCEDURES



## DIAGNOSTICS

### EXPLORERS



**11-12**  
(Ref. 263.06SI)

**17-23**  
(Ref. 263.07SI)

## RESTORATION

### EXCAVATORS & BURNISHERS



**36-35**  
(Ref. 165.01SI)

**38-37**  
(Ref. 165.02SI)

**91**  
(Ref. 165.03SI)

**125**  
(Ref. 108.14SI)

## RESTORATION

### COMPOSITE INSTRUMENTS



ø 1.1mm

w 1.8mm  
(Ref. 194.12SI)

ø 2.0mm

w 2.0mm  
(Ref. 194.13SI)

L 4mm

L 5.4mm  
(Ref. 194.14SI)

L 4mm

L 5.6mm  
(Ref. 194.15SI)

L 1.6mm  
(Ref. 194.16SI)

L 1.6mm  
(Ref. 192.05SI)



**MIRROR HANDLE\***  
(Ref. 212.00SI) (CSS)

\*Mirror sold separately

## RESTORATION

### CEMENT & WAX SPATULAS



20mm  
(Ref. 246.05SI)

25mm  
(Ref. 246.09SI)

50mm  
(Ref. 246.24SI)

## PERIODONTICS

### EXPROS - EXPLORER/PROBE COMBO



**UNC12**  
1 to 12mm  
(Ref. 418.06SI)

**CP12**  
3-6-9-12mm  
(Ref. 418.07SI)

**UNC15**  
1 to 15mm  
(Ref. 418.08SI)

**CP15**  
3-6-9-12-15mm  
(Ref. 418.09SI)

**MOST POPULAR #23 EXPLORER**

## ENDODONTICS

### ROOT CANAL PLUGGERS



**MACHTOU 1-1**  
(Ref. 419.01SI)

**MACHTOU 1-2**  
(Ref. 419.02SI)

**MACHTOU 2-3**  
(Ref. 419.03SI)

**MACHTOU 2-4**  
(Ref. 419.04SI)



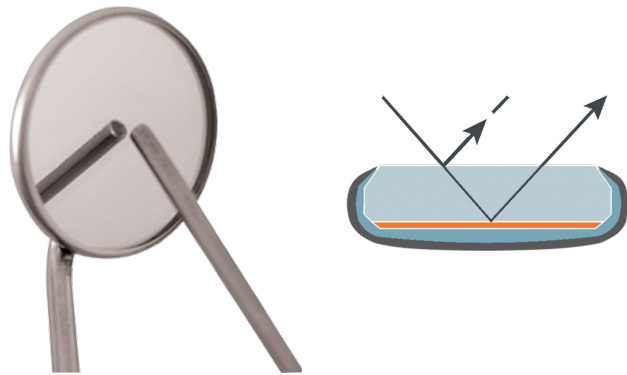
# ACTEON<sup>®</sup> MOUTH MIRRORS

Mouth mirrors are used for indirect vision in the oral cavity. The mounting is entirely in stainless steel. A silicone chip is put between the glass and the metallic mounting to make the mirror watertight.

## THE COATING

### BACK SURFACE

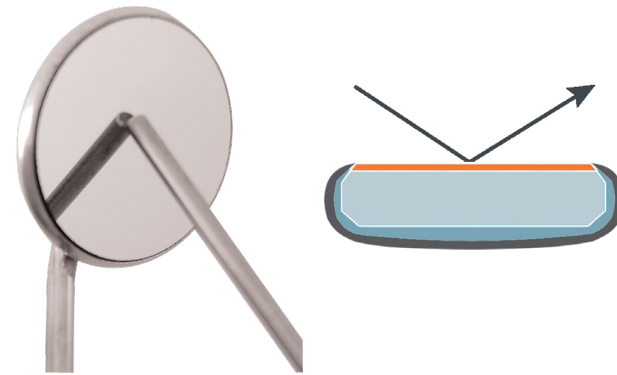
Coating: Aluminium



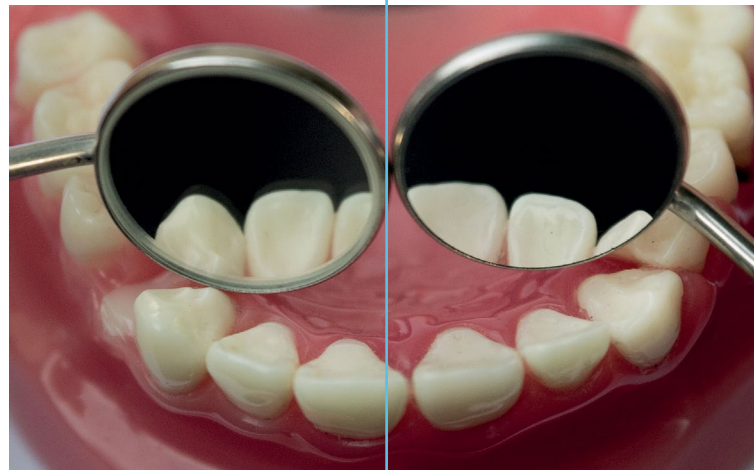
- ▶ Space between the object and the image because of the thickness of the glass
- ▶ Economical
- ▶ Less accurate because of the double image effect
- ▶ Blurry image because of double reflection

### FRONT SURFACE

Coating: Pure Reflect<sup>®</sup>

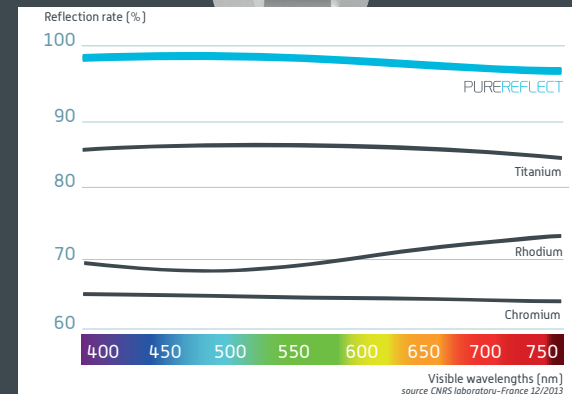
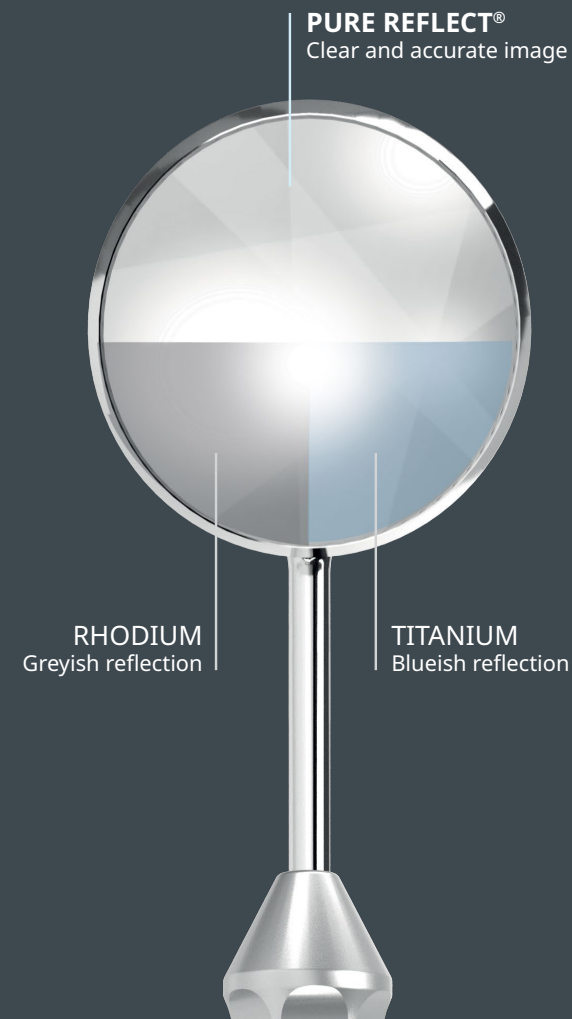


- ▶ No space between the object and the image. The reflective coating is deposited on the glass
- ▶ Clean and precise image
- ▶ Color alteration of TI and RH coatings



## COLOR ACCURACY

Comparison between



## CHARACTERISTICS

### THE FACES

Single-sided



### THE STEM

Cone Socket Stem (CSS)



### THE SIZES



Most popular sizes are 4 size (Ø 22mm) and 5 size (Ø 24mm)

# CASSETTES

## EASY CLIP CASSETTE

8 instruments  
Dimensions: 180x136x30mm  
Material: PSU  
Handy and light (90 g)  
Sterilizable up to 180° C



Easy Clip  
Cassette  
Ref. 233.30



## LARGE STAINLESS STEEL CASSETTE

Sterilization cassette stainless steel 16  
instruments  
Dimensions: 285x92x37mm  
Material: stainless steel  
Yellow silicone + 2 metallic clips  
Sterilizable up to 180° C



Cassette  
Ref. 233.20

Example of presentation  
Instruments are not included

## PROPHYLAXIS KIT BLISS

- 233.30** Easy clip cassette
- 212.00SI** Mirror handle CSS with one #5 Pure Reflect mirror
- 418.06SI** UNC12 - perio probe 1-12mm and explorer #23
- 404.23SI** M23 - Sickle scaler
- 402.11SI** Gracey curette 11-12
- 402.13SI** Gracey curette 13-14
- 406.07SI** H6-H7 - Scaler
- 405.13SI** Columbia curette 13-14



---

[www.acteongroup.com](http://www.acteongroup.com)

---

Bliss  
by Acteon

Class I professional dental medical devices - ISO 13485.  
Read instructions provided with the products.  
Not reimbursed by health insurance organizations.  
Manufacturer: PRODONT HOLLIGER (France)

ACTEON North America  
124 Gaither Drive | Suite 140  
Mount Laurel | NJ 08054 | USA  
Tel. 1-800-289-6367 | Fax. 888-964-3548  
[www.acteongroup.com](http://www.acteongroup.com) | [info@acteonusa.com](mailto:info@acteonusa.com)



1/19/21