



Uniform Catalog 2020

Catalog for
GreenChef Uniforms

GREENCHEF GLOBAL

GREENCHEF SINGAPORE

GREENCHEF MALAYSIA

GREENCHEF INDONESIA

Welcome to GreenChef Catalog for 2020.

Loved and experienced by our customers since early 2010.

The Label For Chefs.

The food and beverage may be crème de la crème, but the attire of the staff, whether they are front of the house or back of the house, may say otherwise. This is the kind of thinking that traverses the mindset of the average consumer, and as such, in some ways may account for why some hotels and restaurants lose business, while others proceed to gain more. There are multiple factors that go into the overall dining experience – professional look and feel being among the most important.

Seeing an unmet need in the hospitality sector for professional uniform garments, the idea for GreenChef was born, to help professionals of the industry look the part.

With manufacturing done in-house, there would be better quality controls in place to help ensure that each and every piece of manufactured attire was done right. Additionally, products are priced reasonably for our customers without those retail mark-ups.

What began in 2010, strictly as a manufacturing firm that supplied uniform garments to food and beverage business owners, hotel establishments, independent chefs, and culinary students, has since widened to other avenues, while still carrying with it, a professional spirit.



Table of Contents

Welcome	01
About us	02
Classic Chef Jacket	05
Executive Chef Jacket	16
Premium Chef Jacket	20
Chef Pants & Trouser	22
Chef Hat, Beanie, and Toque	24
Aprons	28
Shirts	38
Laboratory Coat	39
Customisation	40
Size Charts	42

Legends

- Unisex** Unisex cut that suits both male and female.
- Female** Female cut that are made to fit women better.
- Size** Sizes of the product is based on the box's colour in reference to the size charts on page 42 and 43.
- Free** Free size and only comes in one size that suits most male and female.
- Dri-fit** Dri-fit material is used on the item.

Photo by Jean-Philippe Delberghe

Kitchen Wardrobe Essentials.



11 Stitches Per Inch
A guarantee of quality from us.

Double Stitching
Strong Seams for Extra Durability

High Quality Fabric
Withstand the impact of frequent
wear and wash

THE LABEL FOR CHEFS

Designed for Everyday Wear
Strong Seams for Extra Durability
High-grade materials and Excellent Workmanship
Tried & Tested: Home or Commercial Machine Wash
In-house Manufacture to Ensure Each Uniform is Made Right

GreenChef offer a wide range of chef jackets made with the finest quality materials at cost effective prices. The chef jackets you will find at GreenChef perfectly balance style with functionality, and this is what makes our chef jackets one of the most desirable amongst all our competitors.

Product Highlights:

High End Quality

Wide Selections

Fast Lead Time

Different Price Ranges



Basil Chef Jacket

Product Code: 8050PC

Unisex
Size

Cross-over Yoke with Overlapped Collar
Concealed Snap Buttons
Contrasted White Half Piping Detailing on Front Yoke
Pen/Thermometer Pocket on Left Sleeve
Side Slit for Movement

Size: XS — 4XL

Material: Polycotton (35% Cotton, 65% Polyester)

Sleeve: Long | Short

Colour:



Holly Chef Jacket

Product Code: 8053PC

Unisex
Size

Slant Collar
Crossed Over Yoke
Concealed Snap Buttons
Pen/Thermometer Pocket on Left Sleeve
Side Slits for Movements

Size: XS — 4XL

Material: Polycotton (35% Cotton, 65% Polyester)

Sleeve: Long | Short

Colour:





B.Classic Chef Jacket

Product Code: 8046PC

Unisex
Size

Double-breasted
Plastic 4 holes button
Mandarin Rounded Collar
Pen/Thermometer Pocket on Left Sleeve
Side Slit for Movement

Size: 2XS — 4XL

Material: Polycotton (35% Cotton, 65% Polyester)

Sleeve: Long | Short

Colour:



Tarragon Chef Jacket

Product Code: 8063PC

Unisex
Size

Slant Short Collar
Cross Over Yoke
One 4 Holes Button, Concealed Snap Buttons
Pen/Thermometer Pocket on Left Sleeve
Side Slit for Movement

Size: XS — 4XL

Material: Polycotton (35% Cotton, 65% Polyester)

Sleeve: Long

Colour:



Thyme Chef Jacket

Product Code: 8004PC

Unisex
Size

Cross Over Yoke
Concealed Snap Buttons
Pen/Thermometer Pocket on Left Sleeve
Side Slit for Movement

Size: 2XS — 7XL

Material: Polycotton (35% Cotton, 65% Polyester)

Sleeve: Long | Short

Colour:



Willow Chef Jacket

Product Code: 8052PC

Unisex
Size

Cross-over Yoke with Slant Stand Up Collar
Concealed Snap Buttons, Contrasted Black Collar
Black Lining on the Back
Pen/Thermometer Pocket on Left Sleeve
Side Slit for Movement

Size: XS — 4XL

Material: Polycotton (35% Cotton, 65% Polyester)

Sleeve: Long | Short

Colour:



Bay Blue Chef Jacket


Product Code: 8064PV

Slant Short Collar
Crossed Over Yoke
Exposed Snap Ring Buttons
Pen/Thermometer Pocket on Left Sleeve
Side Slits for Movements

Size: XS — 4XL

Material: Polyviscose

Sleeve: Long

Colour: 

Unisex
Size

denim look-alike.
higher durability.
more washing
cycles.



Bay White Chef Jacket

Product Code: 8064PC

Unisex
Size

Slant Short Collar
Crossed Over Yoke
1 Exposed Button and Hidden Snap Ring Buttons
Pen/Thermometer Pocket on Left Sleeve
Side Slits for Movements

Size: XS — 4XL

Material: Polycotton
(35% Cotton, 65% Polyester)

Sleeve: Long

Colour: 





Mitsuba Chef Coat

Product Code: 8066PC

Unisex
Size

- Single button
- Single-Breasted Yoke
- Pocket on Inner Left
- Side Slits for Movement

Size: XS — 2XL
 Material: Polycotton (35% Cotton, 65% Polyester)
 Sleeve: Quarter
 Colour:



Sushi Chef Coat (Kimono)

Product Code: 8009PC

Unisex
Size

- Cross-over Yoke
- No Buttons
- Straps Fastener on Inner and Outer
- Inner Pocket and Front Pocket
- Side Slit for Movement

Size: XS — 2XL
 Material: Polycotton (35% Cotton, 65% Polyester)
 Sleeve: Quarter
 Colour:



Sage Chef Jacket

Product Code: 8059PC

Unisex
Size

- Overlapped collar, Crossed-over yoke
- Concealed Snap Buttons
- White Contrast Trimming
- Pen/Thermometer Pocket on Left Sleeve
- Side Slits for Movement

Size: XS — 4XL
 Material: Polycotton (35% Cotton, 65% Polyester)
 Sleeve: Long
 Colour:



Rosemary Chef Jacket

Product Code: 8060PC

Female
Size

- Womens Cut
- Overlapped collar, Crossed-over yoke
- Concealed Snap Buttons
- Pen/Thermometer Pocket on Left Sleeve
- Side Slits for Movement

Size: S — 4XL
 Material: Polycotton (35% Cotton, 65% Polyester)
 Sleeve: Long
 Colour:





Caper Chef Jacket

Product Code: 8054PC

Unisex
Size

Cross-over Yoke with Overlapped Collar
Concealed Snap Buttons
Contrasted Black Collar
Pen/Thermometer Pocket on Left Sleeve
Side Slit for Movement

Size: XS — 4XL
Material: Polycotton (35% Cotton, 65% Polyester)
Sleeve: Long
Colour:



Oregano Chef Jacket

Product Code: 8057PC

Unisex
Size

Cross-over Yoke with Slant Collar
Concealed Snap Buttons
Concealed Left Chest Pocket
Pen/Thermometer Pocket on Left Sleeve
Side Slit for Movement

Size: XS — 4XL
Material: Polycotton (35% Cotton, 65% Polyester)
Sleeve: Long
Colour:



Saffron Chef Jacket

Product Code: 8061PC

Unisex
Size

Mandarin Round Collar, Crossed-Over Yoke
Plastic Round Detachable Buttons — Interchangeable
Concealed Stainless Steel Snap Buttons
Pen/Thermometer Pocket on Left Sleeve
Side Slits for Movement

Size: XS — 4XL
Material: Polycotton (35% Cotton, 65% Polyester)
Sleeve: Long
Colour:



Rowen Chef Jacket

Product Code: 8065PC

Unisex
Size

Mandarin Round Collar
Single-breasted
Handrolled Stuffed Buttons
Pen/Thermometer Pocket on Left Sleeve
Side Slits for Movement

Size: XS — 4XL
Material: Polycotton (35% Cotton, 65% Polyester)
Sleeve: Long
Colour:

Dri-fit back panel

for stretch and absorption!



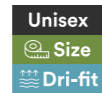
Added Quick-Dry Feature

Fully ventilated back panel for quick drying and sweat absorption. No more sweaty backs!



Peppermint White Chef Jacket

Product Code: 8058PC



- Middle Yoke
- Dri-fit Back Panel
- Stand up Rounded Collar
- Concealed Snap Buttons
- Pen Pocket on Left Sleeve
- Side Slit for Movement

Peppermint White Chef Jacket

Product Code: 8058PC



- Middle Yoke
- Dri-fit Back Panel
- Stand up Rounded Collar
- Concealed Snap Buttons
- Pen Pocket on Left Sleeve
- Side Slit for Movement

Size: XS — 4XL
Material: Polycotton (35% Cotton, 65% Polyester)
Sleeve: Long
Colour:

Size: XS — 4XL
Material: Polycotton (35% Cotton, 65% Polyester)
Sleeve: Short
Colour:

Dri-fit back panel

for stretch and absorption!



Added Quick-Dry Feature

Fully ventilated back panel for quick drying and sweat absorption. No more sweaty backs!



Parsley White Chef Jacket

Product Code: 8055PC



- Cross-over Yoke with Overlapped Collar
- 3 Concealed Snap Buttons
- Opens Half Way Through from Collar Opening
- Pen/Thermometer Pocket on Left Sleeve
- Full Dri-fit at the Back Panel

Parsley Black Chef Jacket

Product Code: 8055PC



- Cross-over Yoke with Overlapped Collar
- 3 Concealed Snap Buttons
- Opens Half Way Through from Collar Opening
- Red Piping on Yoke
- Pen/Thermometer Pocket on Left Sleeve
- Full Dri-fit at the Back Panel

Size: XS — 4XL
Material: Polycotton (35% Cotton, 65% Polyester)
Sleeve: Long
Colour:

Size: XS — 4XL
Material: Polycotton (35% Cotton, 65% Polyester)
Sleeve: Short
Colour:

Executive Chef Jacket

Made with high cotton content of 55% — higher comfort and breathability.



Mission Chef Jacket

Product Code: 8043CVC

Unisex
Size

- Centre Yoke
- Standard Collar
- Concealed Snap Buttons
- Pen Pocket on Left Sleeve
- Side Slit for Movement

Size: XS — 2XL

Material: CVC (55% Cotton, 45% Polyester)

Sleeve: Long

Colour:



Millettia Chef Jacket

Product Code: 8003CVC

Unisex
Size

- Cross-over Yoke with Overlapped Collar
- Concealed Snap Buttons
- Contrasted Black Shoulder and Collar
- Pen Pocket on Left Sleeve
- Side Slit for Movement

Size: XS — 2XL

Material: CVC (55% Cotton, 45% Polyester)

Sleeve: Short

Colour:





Banyan Chef Jacket

Product Code: 8024CVC

Unisex
Size

Cross Over Yoke
Stand Up Rounded Collar
Concealed Snap Buttons
Pen Pocket on Left Sleeve
Side Slit for Movement

Size: XS — 2XL
Material: CVC (55% Cotton, 45% Polyester)
Sleeve: Long | Short
Colour:



Meiji Chef Jacket

Product Code: 8015CVC

Unisex
Size

Cross Over Yoke
Stitching details on Collar
Exposed Snap Buttons
Pen Pocket on Left Sleeve
Side Slit for Movement

Size: XS — 2XL
Material: CVC (55% Cotton, 45% Polyester)
Sleeve: Long | Short
Colour:



Dill Denim Chef Jacket

Product Code: 8056DEN

Unisex
Size

Cross-over Yoke
Exposed Metal Snap Buttons
Mandarin Rounded Stand Up Collar
Double Pocket on Left Chest, Pen Pocket on Left Sleeve
Side Slit for Movement

Size: XS — 4XL
Material: Denim (100% Cotton)
Sleeve: Long (With Roll Up Button Clip)
Colour:



Cobe Chef Jacket

Product Code: 8030CVC

Unisex
Size

Cross Over Yoke
High Neck Collar
Concealed Snap Buttons
Pen Pocket on Left Sleeve
Side Slit for Movement

Size: XS — 2XL
Material: CVC (55% Cotton, 45% Polyester)
Sleeve: Short
Colour:



Premium Classic Chef Jacket

Product Code: 8046SCVC

Unisex
Size

Cross Over Yoke, Rounded Mandarin Collar
Exposed First 3 Four-Holes Fabric Buttons
10 Fabric Four Holes Buttons
Pen Pocket on Left Sleeve
Side Slit for Movement

Size: XS — 2XL
Material: CVC Satin (55% Cotton, 45% Polyester)
Smooth satin finishing
Sleeve: Long
Colour:



Maple Chef Jacket

Product Code: 8048SCVC

Unisex
Size

Mandarin Round Collar
Single-Breasted Yoke
Concealed Snap Buttons
Pen/Thermometer Pocket on Left Sleeve
Side Slits for Movement

Size: XS — 2XL
Material: CVC Satin (55% Cotton, 45% Polyester)
Smooth satin finishing
Sleeve: Long
Colour:



Pine Chef Jacket

Product Code: 8049SCVC

Unisex
Size

Crossed-Over Asymmetrical Yoke
Square Mandarin Collar
Exposed First 3 Fabric Buttons, Concealed Snap Buttons
Pen Pocket on Left Sleeve
Pen Pocket on upper Front Chest
Side Slit for Movement

Size: XS — 2XL
Material: CVC Satin (55% Cotton, 45% Polyester)
Smooth satin finishing
Sleeve: Long
Colour:



Clover Chef Jacket

Product Code: 8051SCVC

Unisex
Size

Wrapped Collar
Cross Over Yoke
Concealed Snap Buttons
Pen Pocket on Left Sleeve
Side Slit for Movement

Size: XS — 2XL
Material: CVC Satin (55% Cotton, 45% Polyester)
Smooth satin finishing
Sleeve: Long
Colour:



Basic Chef Pants

Product Code: 1080PC

Unisex
Size

Elastic Waistband
2 Side Pockets, 1 Back Pocket
Regular Cut
Drawstrings for Fastening

Size: XS — 7XL

Material: Polycotton (35% Cotton, 65% Polyester)

Cut: Unisex

Colour:  



Checkered Chef Pants

Product Code: 1080TR

Unisex
Size

Elastic Waistband
2 Side Pockets, 1 Back Pocket
Regular Cut
Drawstrings for Fastening

Size: XS — 5XL

Material: Tectron Rayon

Cut: Unisex

Colour: 



Striped Chef Pants

Product Code: 1080TR

Unisex
Size

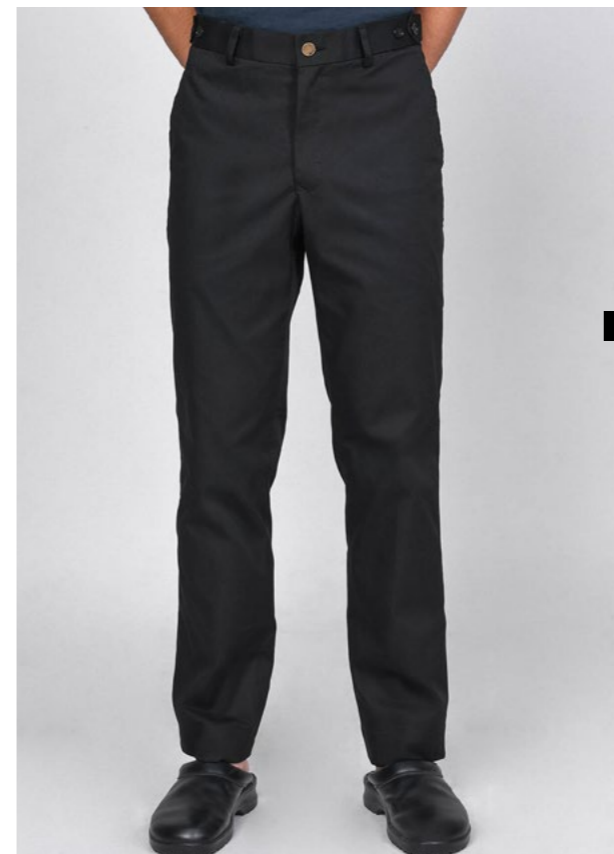
Elastic Waistband
2 Side Pockets, 1 Back Pocket
Regular Cut
Drawstrings for Fastening

Size: XS — 4XL

Material: Tectron Rayon

Cut: Unisex

Colour:  



Black Executive Trousers

Product Code: 1020PC

Unisex
Size

Elastic Waistband
2 Side Pockets, 1 Back Pocket
Regular Cut
Side Adjustable Tabs
Front Zipper

Waist Size: 28"—42"

Material: Polycotton (35% Cotton, 65% Polyester)

Cut: Unisex

Colour: 



Caribbean

Product Code: 502PC

Unisex
Free

Adjustable Sizing with Straps

Size: Free
Material: Polycotton (35% Cotton, 65% Polyester)
Cut: Unisex

Colour:



Bluebell Bandana

Product Code: 508PC

Unisex
Free

Adjustable Elastic Band, Ultra Stretch and Secure

Size: Free
Material: Polycotton (35% Cotton, 65% Polyester)
Cut: Unisex

Colour:



Production Cap

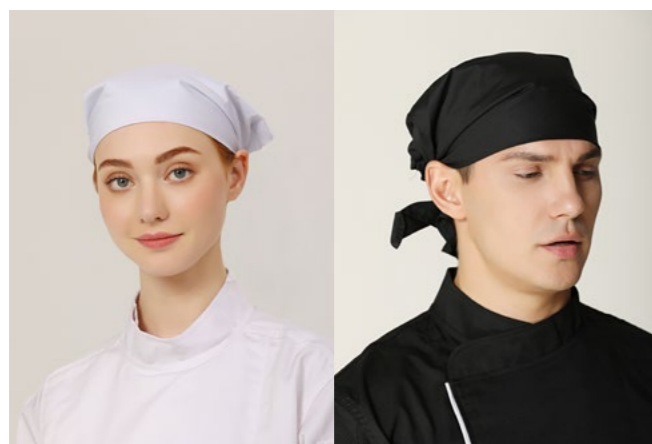
Product Code: 507PC

Unisex
Free

Adjustable Sizing with Elastic Straps
Netting for Ventilation

Size: Free
Material: Polycotton (35% Cotton, 65% Polyester)
Cut: Unisex

Colour:



Headwrap

Product Code: 501PC

Unisex
Free

Adjustable Sizing with Straps

Size: Free
Material: Polycotton (35% Cotton, 65% Polyester)
Cut: Unisex

Colour:



Freesia Chef Beanie, Vent

Product Code: 504PC-VENT

Unisex
Free

Netting for Ventilation
Adjustable Elastic Band

Size: Free
Material: Polycotton (35% Cotton, 65% Polyester)
Cut: Unisex

Colour:



Dandelion Chef Beanie

Product Code: 509PC

Unisex
Free

Velcro Adjustable
Double Layered

Size: Free
Material: Polycotton (35% Cotton, 65% Polyester)
Cut: Unisex

Colour:



Gladiolus Chef Beanie

Product Code: 511PC

Unisex
Free

Velcro Adjustable
Dri-fit Roof for Ventilation

Size: Free
Material: Polycotton (35% Cotton, 65% Polyester)
Cut: Unisex

Colour:



Freesia Chef Beanie, No Vent

Product Code: 504PC

Unisex
Free

Adjustable Elastic Band

Size: Free
Material: Polycotton (35% Cotton, 65% Polyester)
Cut: Unisex

Colour:

The Classic Toque.



Unisex
Free

Size: Free
Material: Polycotton
(35% Cotton, 65% Polyester)
Cut: Unisex
Colour:



Toque (M), Vent

Product Code: 510PC-VENT

Netting for Ventilation
Adjustable Velcro



Toque (M), No Vent

Product Code: 510PC

Adjustable Velcro



Poppy Chef Toque

Product Code: 506PC

Unisex
Free

Adjustable Straps

Size: Free
Material: Polycotton
(35% Cotton, 65% Polyester)

Colour:

Size: Free
Material: Tectron Rayon
(35% Rayon, 65% Tectron)

Colour:





White
Bib Apron

01 — Features:
iPad Mini Pocket
Notebook
Keyhook
Pen Pocket

02 — Taking care of me :
30°C Machine Wash
Do not bleach
Do not machine dry
Wash with like colours
*It is normal to have some colour
bleeding for first few washes.

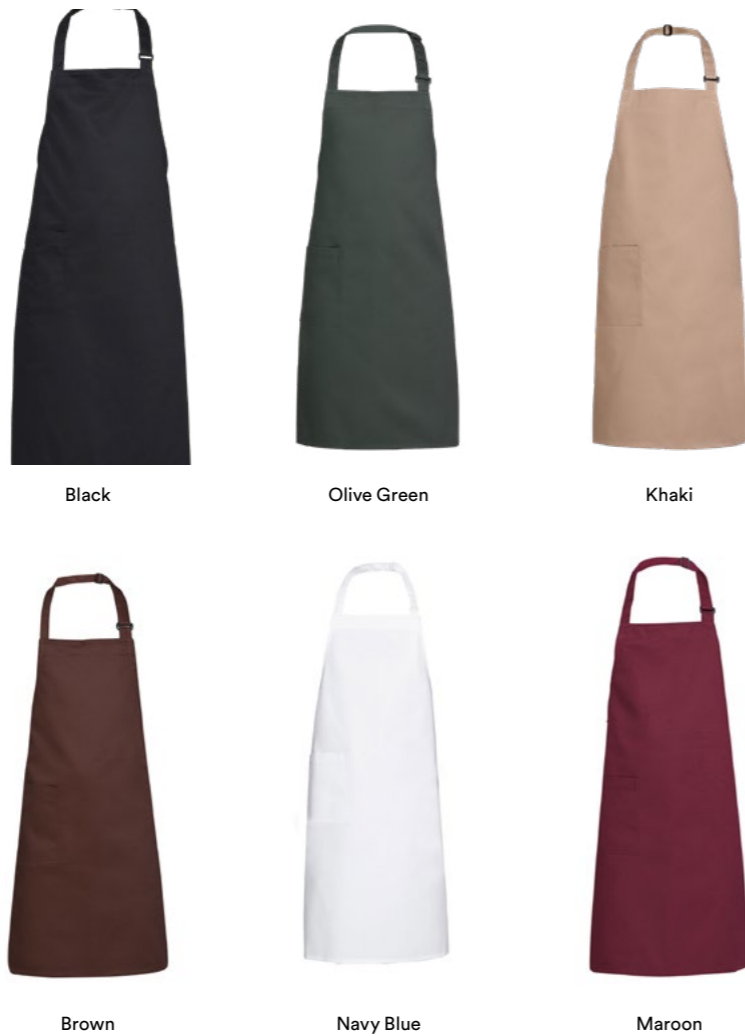
Basic Bib Apron

Product Code: 610PC



Adjustable Neck Buckle and Waist Straps
One Right Pocket

Size: Free
Material: Polycotton
(35% Cotton, 65% Polyester)



Small Stripes

Size: Free
Material: Tectron Rayon
(35% Rayon, 65% Tectron)
Colour:




Big Stripes

Size: Free
Material: Tectron Rayon
(35% Rayon, 65% Tectron)
Colour:



Size: Free

Material: Tectron Rayon
(35% Rayon, 65% Tectron)

Colour: 



01 — Features:
iPad Mini Pocket
Notebook
Keyhook
Pen Pocket

02 — Taking care of me :
30°C Machine Wash
Do not bleach
Do not machine dry
Wash with like colours
*It is normal to have some colour
bleeding for first few washes.



Black



Olive Green



Khaki

Basic Chef Apron

Product Code: 608PC

Unisex
Free

Adjustable Waist Straps
One Right Pocket

Size: Free

Material: Polycotton
(35% Cotton, 65% Polyester)

Colour: 



Brown



Navy Blue



Maroon

Chef aprons. But better with the extra features.



Flap Chef Apron with Slit

Product Code: 605PC

Unisex
Free

Straps Fasteners
Flap for Extra Protection
Hidden Pocket Under the Flap
Slit for movement

Size: Free
Material: Polycotton (35% Cotton, 65% Polyester)
Cut: Unisex

Colour:

Flap Angled Chef Apron

Product Code: 601PC

Unisex
Free

Straps Fasteners
Flap for Extra Protection
Multiple pocket compartments
Back pocket for a card or belongings.

Size: Free
Material: Polycotton (35% Cotton, 65% Polyester)
Cut: Unisex

Colour:

Gretel Service Bib Apron

Product Code: 614P

Female
Size

A Full-width Skirt Apron
X Crossed Back Straps
One size, side buttons for adjustment
Extendable Side Pockets
Pen Pocket on Left Chest

Size: Free
Material: 100% Polyester
Cut: Womens
Colour:



Hansel Service Bib Apron

Product Code: 613P

Unisex
Free

A Half-width Apron
H Back Straps
One size, back buttons for adjustment
Extendable Side Pockets
Pen Pocket on Left Chest

Size: Free
Material: 100% Polyester
Cut: Unisex
Colour:



01 // Features:
iPad Mini Pocket
Notebook
Keyhook
Pen Pocket

02 // Taking care of me :
30°C Machine Wash
Do not bleach
Do not machine dry
Wash with like colours
*It is normal to have some colour
bleeding for first few washes.



Joey Demko

Product Code: 815DEN

Unisex
Free

Two Front Pockets
Adjustable Neck Strap
Golding Stitching
Brown Webbing Straps

Size: Free
Material: Denim (100% Cotton)
Cut: Unisex
Colour: ■

Noah Demko

Product Code: 817DEN

Unisex
Free

Two Front Pockets
Adjustable Neck Strap
Golding Stitching
Black Webbing Straps

Size: Free
Material: Denim (100% Cotton)
Cut: Unisex
Colour: ■

Keith Demko

Product Code: 818DEN

Unisex
Free

Two Front Pockets
Adjustable Neck Strap
Golding Stitching
Khaki Brown Webbing Straps

Size: Free
Material: Denim (100% Cotton)
Cut: Unisex
Colour: ■

Denim Aprons



Multi Pockets Feature and Practicality.

Gwen Demko Half Apron

Product Code: 816DEN

Unisex
Free

Multi-compartments
Key hook and Loop
Adjustable Waist Straps

Size: Free
Material: Denim (100% Cotton)
Cut: Unisex
Colour: ■ ■



Xion — Crossback Bib Apron



Product Code: 615PC

Unisex
Free

Default Strap Colour is Black
Adjustable Straps from Back Loops
3 Compartments
White Contrast Stitches

Size:	Free
Material:	Polycotton (35% Cotton, 65% Polyester)
Cut:	Unisex
Apron Colour:	
Strap Colour:	



Women Basic Shirt

Product Code: 9012CC

Female
Size

Standard Collar
1 Visible Button on the Shirt's Collar
5-6 Buttons Concealed Under Shirt's Placket
One button Square Cuff
Shirt Wrinkling Reduced

Size: XS — 4XL
Material: Super Combed Cotton
Sleeve: Long
Colour:



Unisex Basic Shirt

Product Code: 9011CC

Female
Size

Standard Collar
1 Visible Button on the Shirt's Collar
5-6 Buttons Concealed Under Shirt's Placket
One button Square Cuff
Shirt Wrinkling Reduced

Size: XS — 4XL
Material: Super Combed Cotton
Sleeve: Long
Colour:



Laboratory Coat

Product Code: 0001PC

Standard Collar
5-6 Buttons
3 Visible Pockets
Side Slits For Inner Pants Access
Back Slits for Movement

Size: XS — 4XL
Material: Polycotton
(35% Cotton, 65% Polyester)
Sleeve: Long
Colour:

Unisex
Size

Customisation Ideas



Table 1 —Preset Fonts

Code	Example Texts	Font Name
XPG001	Example Text	Amerigo BT
XPG002	Example Text	Arial
XPG004	EXAMPLE TEXT	Balloon
XPG006	Example Text	Bauhaus 93
XPG007	Example Text	Domine
XPG008	<i>Example Text</i>	Brush Script MT
XPG009	<i>Example Text</i>	Brush 445
XPG010	Example Text	Calligrapher
XPG013	Example Text	Cooper Std Black
XPG016	Example Text	Egyptian710 BT
XPG024	<i>Example Text</i>	Kaufmann Bd BT
XPG032	Example Text	Tango BT
XPG033	Example Text	TimeScrDMed

Logo Embroidery

An embroidery looks crisp, distinct, and professional. It's precise with near-perfect quality, which is why it's the must-have imprint method to some of the fancy and elite. In addition, an embroidery can last a long time with right care of the garment - embroidery thread doesn't wash or fade out. Embroidery has longer lifespan than ink transfer in screen printing as the thread holds up the fabric.

No minimum order. Setup fee is necessary for first-timers.

Name Embroidery

No setup fee is required if you choose to personalise your item with name/title/brand as preset fonts is readily available. Refer to table 1

Name Embroidery Colours

Common name embroidery colours can be referred from here. For logo embroidery, it is best to provide your pantone colour to match with our wide range of colour threads.

Black	Grey 485	Gold 563	Red 703	Pink 1081	Blue 372	Yel 546	Pur 676	Grn 275
White	D.Grey 488	Silver 483	Org 537	H.Pink 1086	N.Blu 358	Brown 537	L.Pur 673	D.Grn 248



Vinyl Printing

- ✓ Economical for simple designs
- ✓ Different textures and finishing
- ✓ Great for names
- ✓ Best for lower quantities
- ✓ Aprons, Hats, T-Shirt



Digital Heat Transfer

- ✓ Bright and detailed colours
- ✓ Best for lower quantities
- ✓ Gradients and effects
- ✓ Aprons, Hats, T-Shirt



Silkscreen Printing

- ✓ Solid and vivid colours
- ✓ Amazing washing qualities
- ✓ Economical for bulk quantities
- ✓ Aprons, T-Shirt

If you would like to view T-Shirt Catalog, please download online or request for from your sales representative.

Customisable uniforms for all industries.

Being a manufacturer and supplier, customising all types of professional uniforms with quality for our clients is never an issue.

We provide custom uniforms at an affordable rates as we eliminate retailers mark ups. By choosing us, we can provide you with the freedom to design and order the uniform to your preference.

Customising made easy



Email Your Design

Email us your preferred or existing design for us to provide you with the most accurate quotation. Design fees applies if you choose our in-house designers.



Setup a Meeting

To discuss your concerns and needs. Choosing the right materials and customising options is essential to producing the best uniforms for you.



Final Quote & Artwork

Once the final quotation is approved, a visual mock up is provided before the mass production of the uniforms.



Goods Receive

With our own in-house manufacturing ability, goods can be received within a short lead time.



After Sales

Purchasing customised uniforms can be a daunting process as the whole process is made from scratch. With our customer service, we are fully transparent and no questions will be unanswered.



Kitchen Apron



Restaurant Service



Service Aprons



Laboratory Coats



Operational T-Shirts



Corporate Blazers



Hotels Uniform



Country Club



Engineering Coveralls

Chef Jacket Size Chart

Size	XS	S	M	L	XL	2XL	3XL	4XL	5XL	6XL	7XL
Short Sleeve	12	12	12.5	13	13.5	14	14.5	15	15	15.5	15.5
Long Sleeve	23	23	23.5	24	24.5	25	25.5	26	26	26.5	26.5
Shoulder	17	17.5	18	18.5	19	19.5	20	20.5	20.5	20.5	21
Chest	40	42	44	46	48	50	52	54	55	58	60
Length	28.5	29	29.5	30	30.5	31	31.5	32	32.5	33	33.5

*Measurements is based on the chef jacket's body and presented in inches.

Japanese Coat Size Chart

Size	XS	S	M	L	XL	2XL
Sleeve	14.5	15	15.5	16.5	16.5	17
Shoulder	18	18.5	19	19.5	20	20.5
Chest	44	46	48	50	52	54
Length	29	29.5	30	30.5	31	31.5

*Measurements is based on the chef jacket's body and presented in inches.

Women Chef Jacket Size Chart

Size	S	M	L	XL	2XL	3XL	4XL
Short Sleeve	11	11.5	12	12.5	13	13.5	14
Long Sleeve	21.5	22	22	22.5	23	23.5	24
Shoulder	15	15.5	16	16.5	17	17.5	18
Chest	36	38	40	42	44	46	48
Length	25.5	29.5	30	30.5	31	31.5	32

*Measurements is based on the chef jacket's body and presented in inches.

Laboratory Coat Size Chart

Size	XS	S	M	L	XL	2XL	3XL	4XL
Collar	16	16.5	17.5	17.75	18.5	19	19.5	20
Shoulder	16.5	17	17.5	18	18.5	19	19.5	20
Chest	39	41	43	45	47	49	51	51
Length	38	38.5	39	39.5	40	40.5	41	41.5

*Measurements is based on the coat's body and presented in inches.

Chef Pants Size Chart

Size	XS	S	M	L	XL	2XL	3XL	4XL	5XL	6XL	7XL
Waist	26	28	30	32	33	35	38	40	42	44	46
Hip	38	40	42	44	46	48.5	50	52	54	58	60
Length	39	40	40	40.5	40.5	41	41	41	41.5	41.5	41.5

*Measurements is based on the chef pant's body and presented in inches.

Zip Trousers Size Chart

Size	XS	S	M	L	XL	2XL	3XL	4XL	5XL
Waist	28	30	32	34	36	38	40	42	44
Hip	35	37	39	41	43	45	47	49	54
Thigh	23.5	24	25.5	26.5	27.5	28.5	29	30	32
Crotch	24.5	25.5	26	26.5	27.5	27.5	28.5	29.5	30.5
Length	39	40	40.5	40.5	40.5	40.5	40.5	41	41

*Measurements is based on the trouser's body and presented in inches.

Unisex Shirt Size Chart

Size	XS	S	M	L	XL	2XL	3XL	4XL
Short Sleeve	9.25	9.75	10.25	10.75	10.75	11	11.5	11.5
Long Sleeve	22.5	23.5	24.5	24.5	24.5	25	25	25.5
Shoulder	16.5	17	17.75	18.25	19	19.5	20	20.5
Chest	32	35	36	37	39	41	43	45
Length	27.5	28.5	29	29.5	30	30.5	31	31.5

*Measurements is based on the shirt's body and presented in inches.

Female Shirt Size Chart

Size	XS	S	M	L	XL	2XL	3XL	4XL
Short Sleeve	8.25	8.75	9.25	9.75	9.75	9.75	10.75	10.75
Long Sleeve	21.5	22	22.5	23	23.5	23.5	24	24
Shoulder	15	15.5	16	16.5	17	17.5	18	18.5
Chest	29	31	33	35	37	39	41	43
Length	28.5	29	29	30	30	30.5	30.5	31

*Measurements is based on the shirt's body and presented in inches.



UNIFORM
CATALOG
2020

