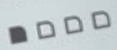




**AFFINAGE**  
PROFESSIONAL

**CONTOUR CREAM**  
with Thermal Activated Technology

Define Curl or Smooth Hair  
Contains Marula and  
Camellia Seed Oils



**AFFINAGE**  
PROFESSIONAL

**THERMAL  
PROTECTANT**  
with Thermal Activated Technology

Heat Styling Aid  
Contains Marula Seed Oil  
and Avocado Extract



**AFFINAGE**  
PROFESSIONAL

**MOISTURE FOAM**  
Lightweight Flexible Control

Contains Hydrolyzed  
Rice Protein  
Nourishing and Moisturising

**AFFINAGE**  
PROFESSIONAL

**STYLING  
COLLECTION**

[www.affinage.com.au](http://www.affinage.com.au)

# YOUR STYLING SOLUTION

Affinage Professional Styling is ideal for on-trend, lightweight and flexible hairstyling.

With light to extra strong hold, offering creative control without compromising texture and movement. Thermal Activation Technology delivers effective protection and natural oils and extracts provide nourishment hair deserves.

Available in economically-sized, easy to use packaging, this versatile range can be layered and combined for flawless preparation, styling and finishing for any gender or generation.

## PREP

Protect and support the style

## STYLE

Create and define the style

## FINISH

Hold the style and add shine



# KEY INGREDIENTS

### MARULA SEED OIL

High Omega content  
Effective moisturiser  
Powerful fatty acid, anti-oxidant and nutrient

FEATURED IN:  
Thermal Protectant  
Volumising & Texturising Spray  
Contour Cream

### AVOCADO EXTRACT

High effective healing properties  
Loaded with vitamins A, B-5 and E

FEATURED IN:  
Thermal Protectant

### CAMELLIA SEED OIL

Rich in Omega-9  
Seals and smoothes the cuticle

FEATURED IN:  
Contour Cream

### HYDROLYZED RICE PROTEIN

Rich in amino acids  
Nourishes hair  
Helps prevent damage

FEATURED IN:  
Moisture Foam

### LINSEED OIL

Anti inflammatory, assists with itchy scalps  
High in Vitamin E to nourish hair follicle

FEATURED IN:  
Luminous Drops

### KERATIN AMINO ACID

Stimulates hair growth  
Nutritional to hair

FEATURED IN:  
Luminous Drops



# THERMAL ACTIVATED TECHNOLOGY (TAT)

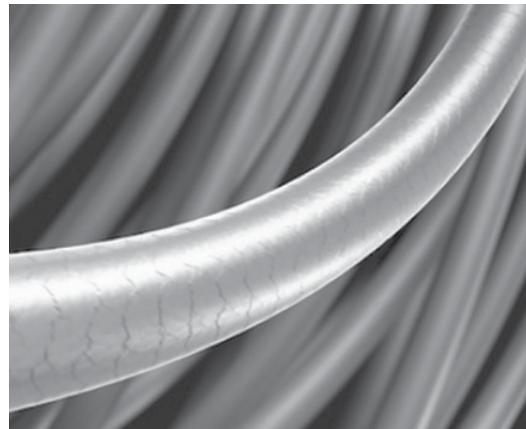
This unique formula is most effective when subjected to high temperatures such as the use of blow drying and flat ironing. TAT is a multifunctional active formulation that binds and protects the entire hair strand from daily heat stresses.

TAT also contains a UV protection filter which helps combat free radicals. Marula Seed Oil deeply hydrates and is high in antioxidants and vitamins, which makes for the most effective heat styling protectant.



WITHOUT TAT

The hair is exposed to heat damage



WITH TAT

Provides a barrier for heat stress and damage



## ADDED BENEFITS OF TAT

- Reduces oxidative stresses
- Protects the root restoring normal protein metabolism
- Prevents Keratin breakdown, preserving the hair's integrity
- Prevents split ends and flaking



□ □ □ □  
NO HOLD

### THERMAL PROTECTANT

Prevent heat damage from hair styling tools and eliminate frizz and static.

**Hair Protection:** Spray and blow dry into the hair to seal and smooth follicles before curling or straightening.

**Porosity Equaliser:** Spray through the mid-lengths and ends before colouring to achieve an even result.



■ ■ ■ □  
STRONG HOLD

### VOLUMISING & TEXTURISING SPRAY

Build body, volume and texture with this everyday styling spray.

**Root Volume:** Spritz into the root area on damp or dry hair and blow dry for extra lift.

**Styling Support:** Spritz the hair after styling to ensure thermal waves or curls last throughout the day.



■ □ □ □  
LIGHT HOLD

### CONTOUR CREAM

Define curl, smooth straightened hair and eliminate frizz with this multifunctional cream.

**Glossy Finish:** Apply to palm and rub through damp straight or wavy hair, then blow dry to leave hair smooth and shiny.

**Tamed Curls:** Apply to palm and disperse evenly throughout curly or unruly hair. Use a diffuser to dry and add a small amount after styling to further define curls or waves.



■ ■ □ □  
MEDIUM HOLD

### MOISTURE FOAM

Moisturise and style in a single application with this flexible styling foam.

**Curl Control + Hydration:** Apply to damp hair and blow dry with a diffuser or leave to dry naturally to control curls softly without making the hair feel stiff.

**Style Support:** Apply to clean, dry hair and blast dry for added moisture and a longer lasting style.



■ □ □ □  
LIGHT HOLD

### VOLUME POWDER

Achieve effortless style, body and texture with this lightweight volumising powder.

**Hairdresser's Tip:** After blow drying apply Volume Powder to the crown to maximise volume and texture.



□ □ □ □  
NO HOLD

### LUMINOUS DROPS

Improve overall hair condition with this lightweight leave-in serum for shiny and silky hair.

**Save Time:** Use Luminous Drops in damp hair to decrease drying time by up to 10%.



■ ■ ■ ■  
EXTRA STRONG HOLD

### FINISHING SPRAY

Achieve a session style finish with high shine with this extra strong hold hairspray.

**Final Touch:** Hold 20-30cm away from hair and spray evenly for a soft set look.



■ ■ □ □  
MEDIUM HOLD

### FLEXIBLE SPRAY

Create natural movement with this workable hairspray ideal for fine hair.

**Tame Flyaways:** Spray evenly over the finished style to keep hair in place without compromising texture.



■ ■ ■ □  
STRONG HOLD

### CLAY WAX

Achieve texture and hold with a non-tacky feel with this unisex traditional clay wax.

**Short Styles:** Apply to dry hair for maximum styling control with a matt finish.



■ ■ □ □  
MEDIUM HOLD

### FLEXI PASTE

Style all hair types with this flexible moulding paste with finishing shine.

**Upstyling:** Apply a small amount to dry hair to create and shape your desired style with ease.



Thicker and stronger curls



Light hold with added definition and shine for longer curly or wavy hair

[www.affinage.com.au](http://www.affinage.com.au)



INTERNATIONAL HAIR COSMETICS GROUP PTY LTD  
Cnr Tombo & India Streets, Capalaba Qld 4157 AUS  
T +61 7 3823 4566 E [enquiries@affinage.com.au](mailto:enquiries@affinage.com.au)  
TECHNICAL HOTLINE 1800 804 757

©copyright IHC Pty Ltd

