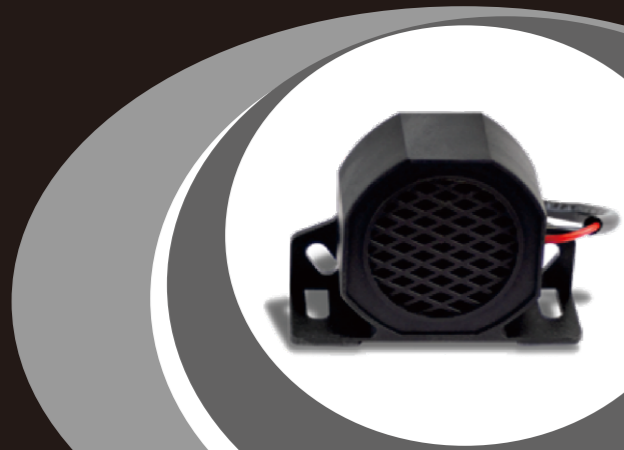


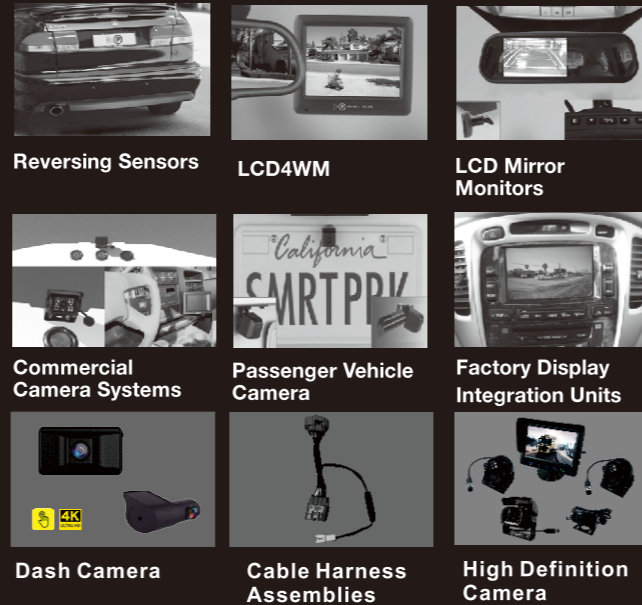


RBA300ZA Smart Alarm

Installation & Operating Manual



www.zorgindustries.net
For our full range of driver
assistance and safety products:



1. Introduction

These instructions are intended for use by an authorized Smart Park™ installer. Modifications, manipulation or improper repairs to this product can affect the operability and safety. Modifying this product in any way or using this product for anything other than it's intended use may invalidate the product warranty.

2. Parts Check Off List

- Smart alarm reverse beeper
- Cable extension harness

3. Required Tools

- Digital Multimeter
- Wire Cutters/Stripper
- Power Drill
- Socket Set
- Screwdrivers
- Tape Measure
- Marker Pen/Pencil



5. Choose a suitable mounting location

at the rear of the vehicle towards the objective area ensuring the Smart Alarm is not confined or enclosed which may affect the self-adjusting feature.
For adequate sound coverage, the Smart Alarm must be mounted approximately 4 feet above ground level.
Also the mounting location should provide adequate protection from wet weather conditions and possible impact to the Smart Alarm.



SmartPark Warranty Card

PLEASE MAIL OR FAX THIS PAGE TO:

Att: PERFORMANCE GUARANTEE DEPT.,
International Fax #: +61-2-9437-4555
Email: sales@zorgindustries.net
PO Box 124
Spit Junction NSW 2088
Australia

Section 1: VEHICLE INFORMATION

VEHICLE IDENTIFICATION NUMBER: _____
YEAR MODEL _____
MAKE LICENSE PLATE #: _____
PRODUCT SERIAL #: _____

Section 2: PURCHASE INFORMATION

DEALER NAME _____
DATE OF SALE _____
PURCHASE PRICE _____
BUYER'S NAME _____

Section 3: LIMITED WARRANTY

The Smart Park™ product is guaranteed to be free from mechanical defects for a period of one year when installed by an authorized Dealership.
Should your Smart Park™ system fail to perform return it to the original selling dealership for replacement. Smart Park will replace it with a new or similar unit.



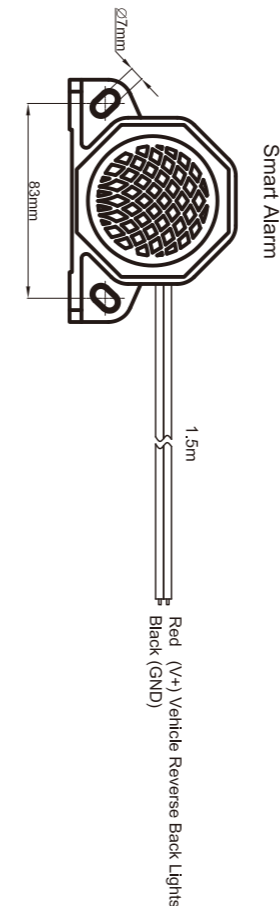
Operating Instructions

The Smart Alarm has a self-adjusting feature which automatically changes the sound output level to a minimum of five (5) dB above the surrounding noise levels as per rated specifications (77-97dB ± 3dB).

Note: The Smart Alarm must not be mounted in a confined or enclosed area which may affect the self-adjusting feature. If this occurs the alarm will automatically adjust to its highest sound output level.

Do not operate the vehicle if the Smart Alarm is not functioning or performing correctly.

4. Wiring Diagram



6. Wiring (refer wiring diagram)

Connect the RED WIRE (+) to the positive (+) wire of the vehicle's reverse back lights.
Connect the BLACK WIRE (-) to the negative terminal or body ground ensuring a clean ground surface to provide a good connection.

7. Activation and test

- Steps:
1. Turn vehicle accessory on.
 2. Place vehicle in reverse (ensuring both pedal brake and hand brake are applied).
 3. Listen for Smart Alarm for confirmed correct function in various sound surroundings.

8. Place operating manual in glove compartment.

Installation is now complete.

