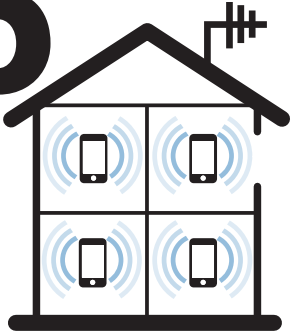


Tips & Tricks

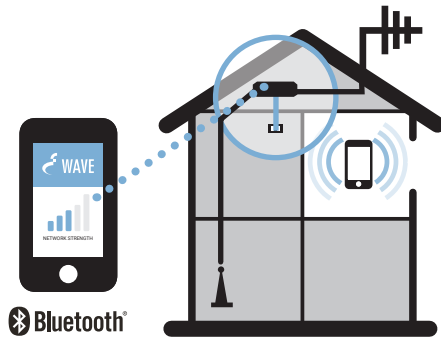
6



- Keep **Outdoor** and **Indoor antennas** separated/isolated from each other for best performance
- Do not use cable splitters for antennas
- Follow the installation instructions for your chosen antennas
- Use sealant if any connections are exposed to elements

Installation Process

7



For more **Cel-Fi GO** features, go to **App Store** or **Google play** and download the mobile **Cel-Fi WAVE** app.

(NOTE: If you do not have a compatible smartphone, go to cel-fi.com/wave to download the Desktop app.)



The Cel-Fi WAVE app can help you optimize your system's performance.

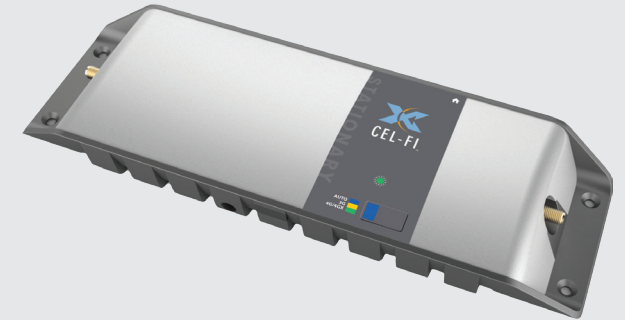


Copyright © 2020 by Nextivity, Inc. U.S. Patents pending. All rights reserved. The Nextivity and Cel-Fi logos are registered trademarks of Nextivity Inc. All other trademarks or registered trademarks listed belong to their respective owners. Designed by Nextivity Inc in California. qsg_go-stationary-powerrec_20-0914



Cel-Fi GO Stationary Quick Start Guide

Smart Signal Repeater



Cel-Fi GO Stationary is an evolved **Mobile Signal Repeater** design that can amplify mobile signals up to 100dB. Connect a single **Outdoor Antenna** to receive the mobile-network signals, and then a single **Indoor Antenna** where you need service, and **Cel-Fi GO** will do the rest automatically.

IN THE BOX

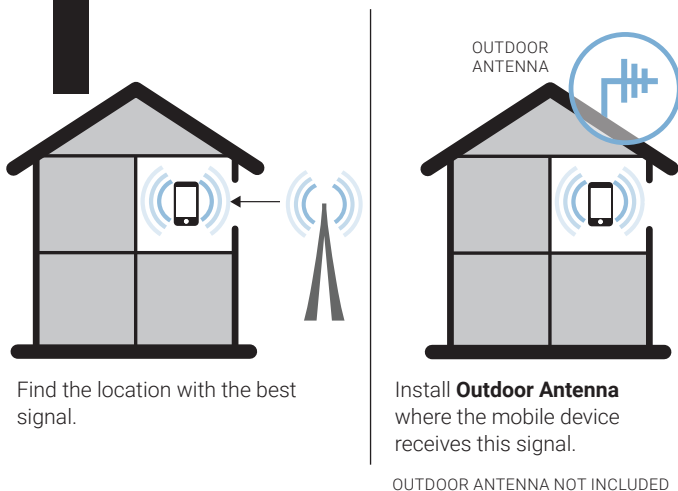
- Quick Start Guide • Smart Signal Repeater
- Power Supply • Legal Insert

For more information, visit: www.cel-fi.com



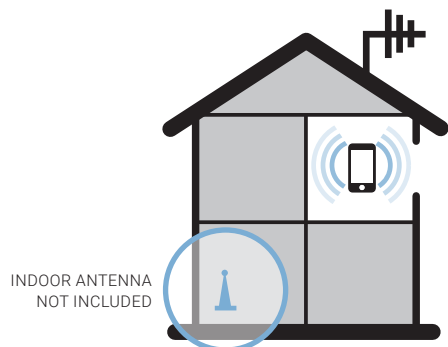
Cel-Fi GO Stationary Installation

1 Install Outdoor Antenna



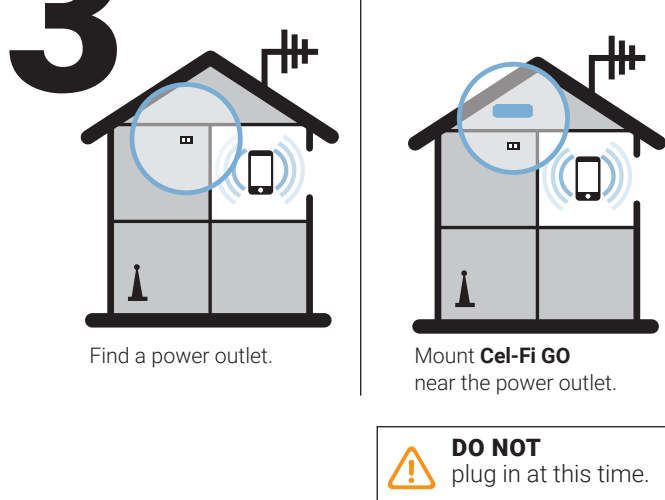
SAFETY: DO NOT INSTALL any equipment close to power lines or drill into walls or other structural elements without first ensuring the location is safe and that there are no hidden items that could cause injury.

2 Install Indoor Antenna

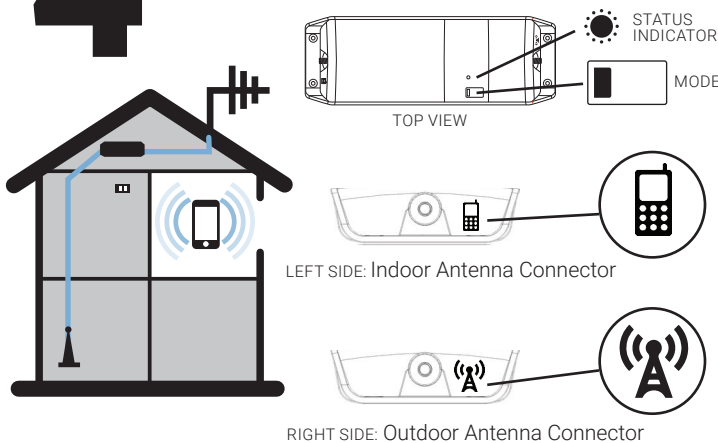


Install **Indoor Antenna** where coverage is needed.

3 Mount Cel-Fi GO Near Power Outlet



4 Connect Outdoor & Indoor Antennas to the Cel-Fi GO Unit



5 Setting the Booster Mode

The Cel-Fi GO can operate in two modes:

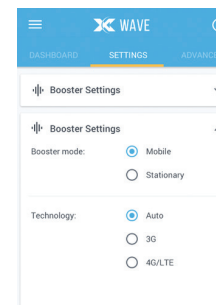
Stationary Mode:

Use in a stationary environment.

OR

Mobile Mode:

Use in a mobile environment.

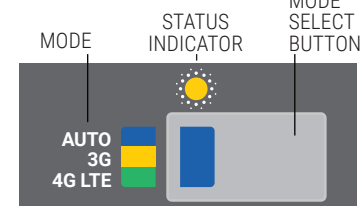


- 1) Plug in the Cel-Fi GO unit.
- 2) Ensure that the mobile phone is connected to the internet.
- 3) After registration, go to: **Settings > Booster Settings** menu.
- 4) Under the **Booster Mode**, choose either Stationary or Mobile.
- 5) After choosing the mode, the Cel-Fi GO will download and install the necessary software and configuration.
- 6) Restart the Cel-Fi GO unit after installation is complete.
- 7) Press the MODE SELECT BUTTON on the unit to select desired MODE (or you can use your smartphone to select mode, but you must download the Cel-Fi WAVE app.) STATUS INDICATOR will blink during the setup process, and may take a few minutes to complete.

4G LTE

STATUS INDICATOR LEGEND

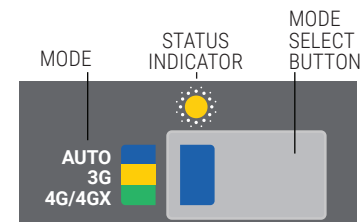
- Boosting 3G
- Boosting 4G LTE
- Error*



4G/4GX

STATUS INDICATOR LEGEND

- Boosting 3G
- Boosting 4G/4GX
- Error*



(*NOTE: if Error, go to troubleshooting at cel-fi.com/support)