

USER MANUAL

2015 Edition

IMPORTANT NOTES

1. The rear (front) view camera functions technically as a driver assistance device, which cannot be taken as a substitute for driver's responsibility when operating the vehicle.
2. To keep the camera working properly, please clean the camera regularly to free it from dirt, waterdrops, snowdrops, etc.
3. Although the camera is designed to be waterproof, please do NOT use high-pressure water jet to wash the camera as this may break the glass lens.
4. Keep the cables of the camera away from high temperature objects such as engine or exhaust.
5. If the camera model you have comes without in-built LED lights, please turn on your license plate light for better vision at night or in dark areas.
6. The cameras are applicable to vehicles with DC12V power output (10% higher or lower allowed), please do NOT use it on vehicles with DC24V or other power output out of this range, otherwise it is very likely to get burned.
7. The specifications of the camera are subject to change without prior notice.

Vehicle Rear/Front View Camera

Image Sensor: PC1058 OV7959
 PC3089 PC6070/7070

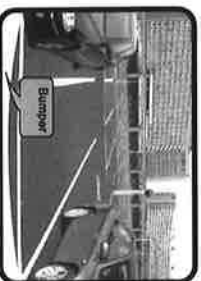
Options: Parking Guide Line ON/OFF
 Mirror/Right Image Switch
 Up/Down Image Switch

Please read the manual carefully before installation and operation.

USER MANUAL & INSTALLATION GUIDE



Rear view image for flush mount camera



Rear view image for bracket/bolt mount camera

User Manual for Rear (Front) View Camera

● **Rear view:**

No-DVD-Player or DVD-CD Condition:
When reversing, the monitor is automatically switched on to display real-time backup images. After reversing, it goes off automatically.

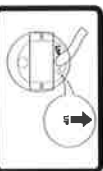
DVD-CD Condition:
When reversing, the monitor is automatically switched to display real-time backup images. After reversing, it automatically switches back to display DVD video.

● **Front View:**

After being on for as long as the engine is ON. In case of long-time starting, please give the camera a break for no less than 5 minutes every 2 hours to avoid overheat.
● The rear and front view camera can work together, and both cameras stop working when the engine is set off.



1. Check to be sure the hole size used is with equal diameter to that of camera.



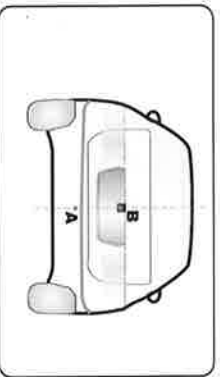
2. Adjust the camera to turn the UP arrow mark straight upwards.



3. Put the harness through the hole made on bumper before fixing the camera.

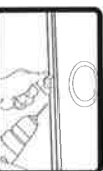


4. Put the camera into the hole and use your two thumbs to press it evenly for tight and flat mounting.



PC1058

Image sensor	CV7359	PC5010/7010	WC5309	WC5309
Signal system	NTSC or PAL	NTSC or PAL	NTSC or PAL	NTSC or PAL
Effective Pixels	648x488	648x488	784x488	720x488 720x576
Sync System	Internal	Internal	Internal	Internal
Horizontal Resolution	480TVL	500TVL	600TVL	480TVL
Min Illumination	0.2Lux	0.15Lux	0.1Lux	0.1Lux
Video Output	1.0Vp-p/75ohm	1.0Vp-p/75ohm	1.0Vp-p/75ohm	1.0Vp-p/75ohm
S/N	> 46db	> 46db	> 46db	> 46db
Waterproof Grade	IP66/IP67	IP66/IP67	IP66/IP67	IP66/IP67
Current Consumption	max100mA	max100mA	max100mA	max100mA
Normal Voltage	DC12V	DC12V	DC12V	DC12V
Working Voltage	9V-16V	9V-16V	9V-16V	9V-16V
Other	Auto White Balance, AGC, Backlight Compensation			



1. Choose a flat position near license plate light and make a small hole for the first screw with a drill.



2. Use a screw driver to fix the first screw (but not tightly).



3. Get the power/video cables connected, and then adjust the camera properly to find the best position for the other screw according to the camera image in monitor.

Remarks:

Bracket flush and bracket mount camera, we also provide the camera screws, which is mounted by following steps:

1. Select suitable flat position near the license plate light and mark it.
2. Drill a hole according to the hole diameter.
3. Put the hole vertically against ground (to the hole and to the bolt with the screw supplied from there).
4. option, and can be mounted with its tail horizontal (against ground) and its top downward.



4. Mark the position found for second screw and make a hole with a drill.

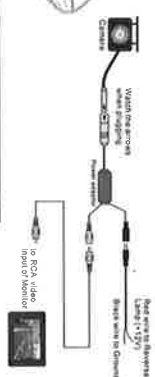


5. Fix the second screw with a screw driver.

Wiring Diagram



The wiring diagram applies to most (but not all) camera models. For more information on the connections, please refer to the manual or marks on the wires.



Options:

Parking Guide Line: Available on partial models, refer to left image.
Guide Line ON/OFF: Available on partial models, and can be realized by following steps. Loop insert mode (or automatic version) comes with mirror image standard for rear view use, and partial models come with mirror/right view switch option. Refer to Switch Loop Up/Down image switch. Available on partial (but not all) camera models. And can be realized by following Switch Loop Instructions.



Switch Loop Instructions:

Blue loop: Cut to switch to front view
Purple loop: Cut to turn off parking line

