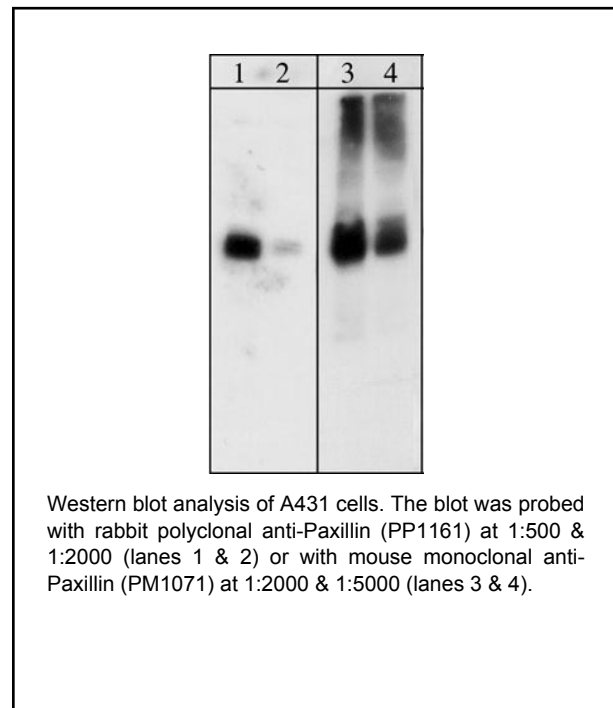


### Background

Paxillin, a focal adhesion protein, is involved in focal adhesion formation during cell adhesion and migration. Paxillin contains LD motifs, LIM domains, and SH3-/SH2-binding domains that participate in a variety of protein-protein interactions with kinases, GTPase-activating proteins, and cytoskeletal proteins. Phosphorylation of paxillin occurs at both tyrosine and serine sites. Serine phosphorylation of paxillin occurs in response to growth-factor activation and fibronectins. Both JNK1 and cdc2 kinases can phosphorylate serine 178 in paxillin. The mutant form of paxillin (S178A) decreases the migration of keratocytes and epithelial cells. Thus, phosphorylation paxillin at serine 178 may be important during cell migration.



### Background References

- Huang, C. et al. (2003) Nature 424:219-223.  
 Woodrow, M.A. (2003) Exp. Cell. Res. 287(2):325-338.  
 Huang, C. et al. (2004) Cell Cycle 3(1):4-6.

### Applications

|       |        |
|-------|--------|
| WB    | 1:1000 |
| ELISA | 1:2000 |

### Species Reactivity

Hu, Rt, Ms

### Specificity

This antibody detects a 68kDa\* protein corresponding to the molecular mass of paxillin on SDS-PAGE immunoblots of A431 cells.

\*All molecular weights (MW) are confirmed by comparison to Bio-Rad Rainbow Markers and to western blot mobilities of known proteins with similar MW.

End user should determine optimal dilution for their particular applications and experiments.  
 Western blot membranes were incubated with diluted antibody in 5% non-fat milk, PBS, 0.04% Tween20 for 1 hour at room temperature.

### Immunogen

Uniprot ID: P49023

A synthetic peptide (coupled to KLH) corresponding to amino acid residues in the C-terminal region of human Paxillin. This peptide sequence is highly conserved in rat and mouse paxillins, and is found in all three paxillin isoforms ( $\alpha$ ,  $\beta$ , and  $\gamma$ ).

### Buffer and Storage

Rabbit polyclonal, affinity-purified antibody is supplied in 100µl phosphate-buffered saline, 50% glycerol, 1 mg/ml BSA, and 0.05% sodium azide. Store at -20°C. Stable for 1 year.

### Related Products

|        |  |
|--------|--|
| PM1071 | Paxillin Mouse Monoclonal                              |
| PM1021 | Paxillin (Tyr-31), phospho-specific Mouse Monoclonal   |
| PP1341 | Paxillin (Ser-83), phospho-specific Rabbit Polyclonal  |
| PP1051 | Paxillin (Ser-178), phospho-specific Rabbit Polyclonal |
| PX1165 | Paxillin (C-terminal) Blocking Peptide                 |

### Product References

- Fan, Y. et al. (2018) Front Cell Neurosci. 12:309.  
 WB: mouse BV2 microglia  
 Sun, Y. et al. (2018) Chemosphere. 200:594.  
 WB: human hepatocytes

FOR RESEARCH USE ONLY. NOT FOR DIAGNOSTIC OR THERAPEUTIC USE.