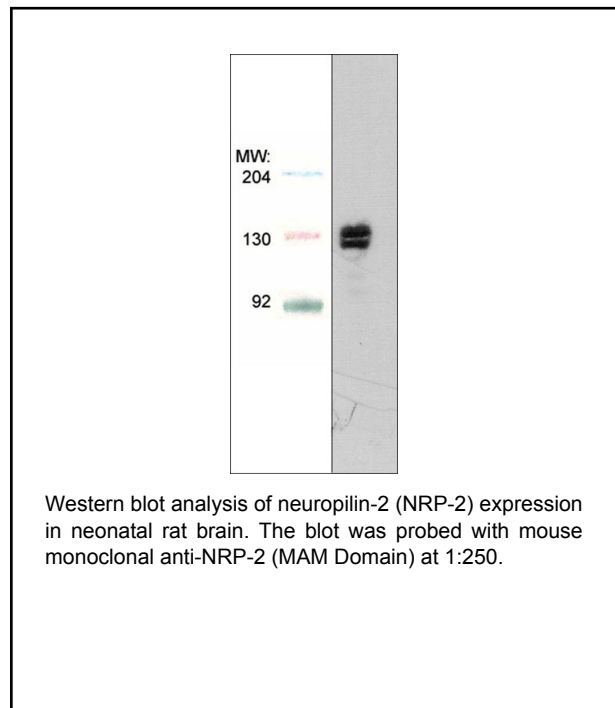


Background

Neuropilins are transmembrane proteins that contain two CUB domains (a1 and a2), two coagulation factor-like domains (b1 and b2), and a MAM domain in the extracellular region. These proteins have short cytoplasmic domains that include a PDZ-binding motif. The neuropilin (NRP) family includes NRP-1, NRP-2A, and NRP-2B. NRP-1 and NRP-2 can form a heterodimer. NRP-1 binds with high affinity to Semaphorin 3A, while NRP-2 binds with high affinity to Semaphorin 3F. Both NRP-1 and NRP-2 have been implicated in VEGFR and Plexin receptor function, and both neuropilins may be involved in axon guidance, angiogenesis, and tumor progression.



Background References

- He, Z. & Tessier-Lavigne, M. (1997) *Cell* 90:739.
 Kolodkin, A.L. et al. (1997) *Cell* 90:753.
 Nakamura, F. & Goshima, Y. (2002) *Adv Exp Med Biol.* 515:55.

Applications

WB 1:500
 ELISA 1:2000

Species Reactivity

Hu, Rt, Ms

Specificity

This antibody detects a 130 kDa* protein corresponding to the apparent molecular mass of neuropilin-2 on SDS-PAGE immunoblots of rat brain.

*All molecular weights (MW) are confirmed by comparison to Bio-Rad Rainbow Markers and to western blot mobilities of known proteins with similar MW.

Isotype: IgG1

End user should determine optimal dilution for their particular applications and experiments.
 Western blot membranes were incubated with diluted antibody in 5% non-fat milk, PBS, 0.04% Tween20 for 1 hour at room temperature.

Immunogen

Uniprot ID: O35276

Clone M391 was generated from Neuropilin-2 recombinant protein containing amino acids in the MAM domain region of rat neuropilin-2. This sequence is highly conserved in human and mouse neuropilin-2, and has low homology to neuropilin-1.

Buffer and Storage

Mouse monoclonal antibody purified with protein A chromatography is supplied in 100µl phosphate-buffered saline, 50% glycerol, 1 mg/ml BSA, and 0.05% sodium azide. Store at -20°C. Stable for 1 year.

Related Products

- NP2111 Neuropilin-1 (a1 CUB Domain) Rabbit Polyclonal
- PP1301 Plexin A1 (Sema Domain) Rabbit Polyclonal
- SK6190 Sema-3A and NRP1/Plexin A1 Receptor Antibody Sampler Kit
- SK6420 Semaphorin-3 and Neuropilin Antibody Sampler Kit
- SK6240 Sema-4D and Plexin B1 Receptor Antibody Sampler Kit

FOR RESEARCH USE ONLY. NOT FOR DIAGNOSTIC OR THERAPEUTIC USE.