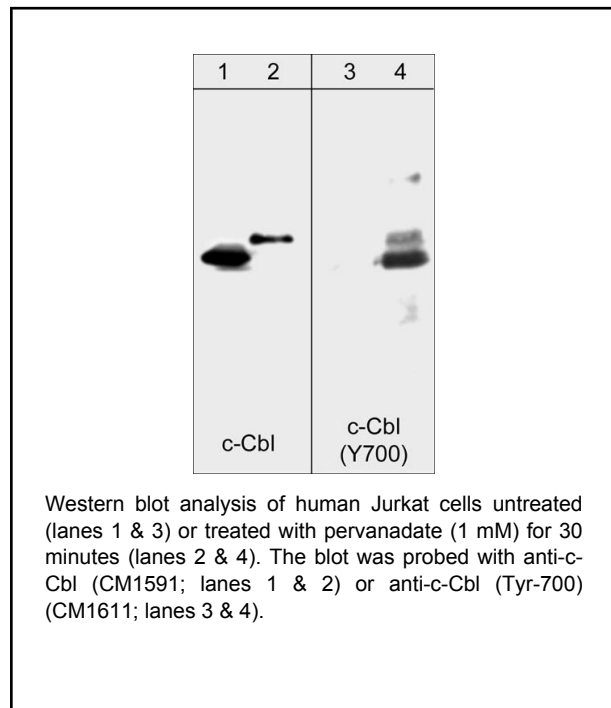


Background

c-Cbl proto-oncogene is a ubiquitously expressed cytoplasmic adaptor protein that is especially predominant in hematopoietic cells. c-Cbl possesses a highly conserved amino-terminal phosphotyrosine binding domain and a C3HC4 RING finger motif. c-Cbl is rapidly tyrosine phosphorylated in response to stimulation of a variety of cell-surface receptors and becomes associated with a number of intracellular signaling molecules such as protein tyrosine kinases, phosphatidylinositol 3 kinase (PI3K), Crk and 14-3-3 proteins. In human cancer tissues, c-Cbl is frequently tyrosine phosphorylated in a tumor-specific manner. Src-family kinases primarily phosphorylate c-Cbl at Tyr-700, Tyr-731, and Tyr-774. These sites of phosphorylation provide docking sites for downstream signaling components, such as Grb-2, PI3K, and Fyn.

Background References

Blake, T. J. et al. (1991) *Oncogene* 6:653.
 Donovan, J.A., et al. (1994) *J. Biol. Chem.* 269:37.
 Rivero-Lezcano, O.M. et al. (1994) *J. Biol. Chem.* 269:26.



Applications

WB 1:1000
 ELISA 1:2000

Species Reactivity

Hu, Rt, Ms

Specificity

The antibody detects a 120 kDa* protein in human Jurkat cells treated with pervanadate, but not in control cells.

Isotype: IgG1

*All molecular weights (MW) are confirmed by comparison to Bio-Rad Rainbow Markers and to western blot mobilities of known proteins with similar MW.

End user should determine optimal dilution for their particular applications and experiments.
 Western blot membranes were incubated with diluted antibody in 5% non-fat milk, PBS, 0.04% Tween20 for 1 hour at room temperature.

Immunogen

Uniprot ID: P22681

Clone (M161) was generated from a synthetic peptide (coupled to KLH) corresponding to amino acid residues surrounding tyrosine 700 in human c-Cbl. This sequence is highly conserved in rat and mouse c-Cbl.

Buffer and Storage

Mouse monoclonal antibody purified with protein A chromatography is supplied in 100µl phosphate-buffered saline, 50% glycerol, 1 mg/ml BSA, and 0.05% sodium azide. Store at -20°C. Stable for 1 year.

Related Products

CM1591 c-Cbl (C-terminal region) Mouse Monoclonal
 FM1211 FAK (Tyr-397), phospho-specific Mouse Monoclonal
 SP1371 c-Src (Tyr-215)[conserved site], phospho-specific Rabbit Polyclonal
 YM2501 Yes (N-terminal region) Mouse Monoclonal

FOR RESEARCH USE ONLY. NOT FOR DIAGNOSTIC OR THERAPEUTIC USE.