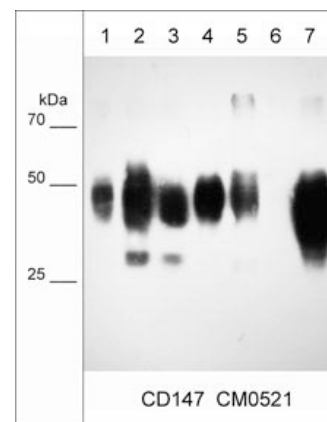


### Background

CD147 (Basigin/EMMPRIN) is a type I integral membrane receptor protein belonging to the immunoglobulin superfamily. CD147 is a glycosylated protein with four known isoforms with isoform 2 being the most abundantly expressed. In many cancers, CD147 is overexpressed and stimulates the secretion of extracellular matrix metalloproteinases by tumor fibroblasts, which can promote tumor progression. CD147 is co-expressed with the amino acid transporter, CD98h, in metabolically active cells such as lymphocytes, macrophages, and tumor cells. CD147 interaction with caveolin and cyclophilins regulates its functions, and this protein may function outside of tumor cells through cell shedding and microvesicle release.

### Background References

Miyauchi T. et al. (1990) J Biochem. 107(2):316.  
Biswas, C. et al. (1995) Cancer Res. 55:434.  
Xiong L. et al. (2014) Int J Mol Sci. 15(10):17411.



Western blot of lysates from SK-MES-1 squamous carcinoma (lane 1), MDA-MB-231 breast carcinoma (lane 2), MeWo melanoma (lane 3), A431 skin adenocarcinoma (lane 4), LNCaP prostate cancer cells (lane 5), MCF7 breast cancer cells (lane 6) and NCI-H1915 lung cancer cells. The blot was probed with mouse monoclonal anti-CD147 (CM0521) at 1:1000.

### Applications

WB 1:2000  
ELISA 1:2000

### Species Reactivity

Hu

**Isotype:** IgG1

End user should determine optimal dilution for their particular applications and experiments.  
Western blot membranes were incubated with diluted antibody in 5% non-fat milk, PBS, 0.04% Tween20 for 1 hour at room temperature.

### Specificity

Clone M052 mouse monoclonal antibody detects a 38-58 kDa\* protein on SDS-PAGE immunoblots of human SK-MES1, MDA-MB-231, MeWo, A431, LNCaP, and NCI-H1915 cells, as well as human brain tissues. The antibody works for western blot and ELISA detection of CD147.

\*All molecular weights (MW) are confirmed by comparison to Bio-Rad Rainbow Markers and to western blot mobilities of known proteins with similar MW.

### Immunogen

**Uniprot ID: P35613**

Clone (M052) was generated from a proprietary antigen related to the native human CD147 expressed in NCI-H1915 lung cancer cell line.

### Buffer and Storage

Mouse monoclonal antibody purified with protein G chromatography is supplied in 100µl phosphate-buffered saline, 50% glycerol, 1 mg/ml BSA, and 0.05% sodium azide. Store at -20°C. Stable for 1 year.

### Related Products

CM0071 CD44 (Extracellular region) Mouse Monoclonal  
CM0371 CD46 (Extracellular region) Mouse Monoclonal  
CM0111 CD59 (glycoprotein) Mouse Monoclonal  
CM0261 CD99 (Extracellular region) Mouse Monoclonal  
CM0361 CD147/Emmprin/Basigin (Extracellular region) Mouse Monoclonal

FOR RESEARCH USE ONLY. NOT FOR DIAGNOSTIC OR THERAPEUTIC USE.