

### Background

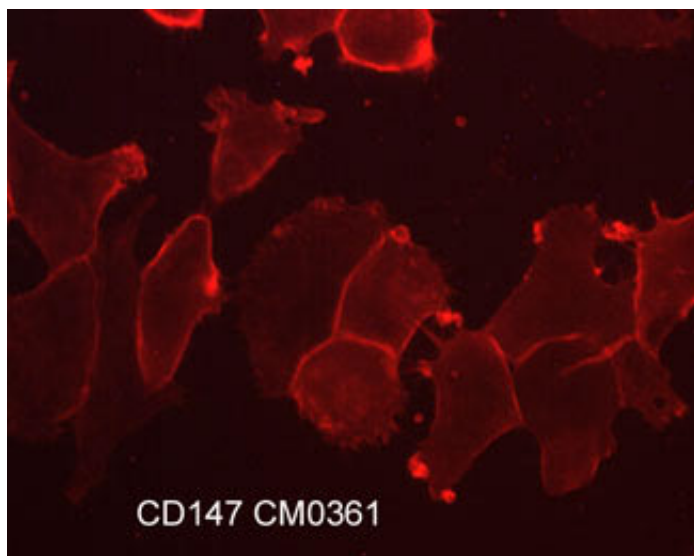
CD147 (Basigin/EMMPRIN) is a type I integral membrane receptor protein belonging to the immunoglobulin superfamily. CD147 is a glycosylated protein with four known isoforms with isoform 2 being the most abundantly expressed. In many cancers, CD147 is overexpressed and stimulates the secretion of extracellular matrix metalloproteinases by tumor fibroblasts, which can promote tumor progression. CD147 is co-expressed with the amino acid transporter, CD98h, in metabolically active cells such as lymphocytes, macrophages, and tumor cells. CD147 interaction with caveolin and cyclophilins regulates its functions, and this protein may function outside of tumor cells through cell shedding and microvesicle release.



**Guaranteed  
to  
Outperform**

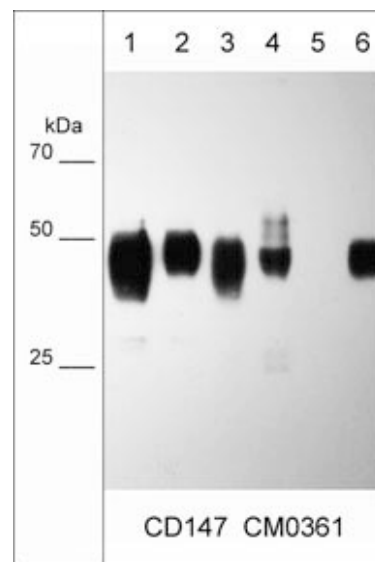
### Background References

- Miyauchi T. et al. (1990) J Biochem. 107(2):316.  
 Biswas, C. et al. (1995) Cancer Res. 55:434.  
 Xiong L. et al. (2014) Int J Mol Sci. 15(10):17411.



CD147 CM0361

Immunocytochemical labeling of CD147 in paraformaldehyde fixed human NCI-H1915 lung carcinoma cells. The cells were labeled with mouse monoclonal anti-CD147 (CM0361). The antibody was detected using goat anti-mouse Ig:DyLight® 594.



Western blot of lysates from BEAS normal lung cells (lane 1), NCI-H28 mesothelial cells (lane 2), NCI-H1299 lung cancer cells (lane 3), LNCaP prostate cancer cells (lane 4), MCF7 breast cancer cells (lane 5), and A431 skin adenocarcinoma (lane 6). The blot was probed with mouse monoclonal anti-CD147 (CM0361) at 1:1000.

FOR RESEARCH USE ONLY. NOT FOR DIAGNOSTIC OR THERAPEUTIC USE.

### Immunogen

Uniprot ID: P35613

Clone (M036) was generated from a proprietary antigen related to the native human CD147 expressed in NCI-H1915 lung cancer cell line.

### Buffer and Storage

Mouse monoclonal antibody purified with protein G chromatography is supplied in 100µl phosphate-buffered saline, 50% glycerol, 1 mg/ml BSA, and 0.05% sodium azide. Store at -20°C. Stable for 1 year.

### Applications

WB	1:2000
ELISA (Cap)	1:100
ICC	1:100
IP	1:100

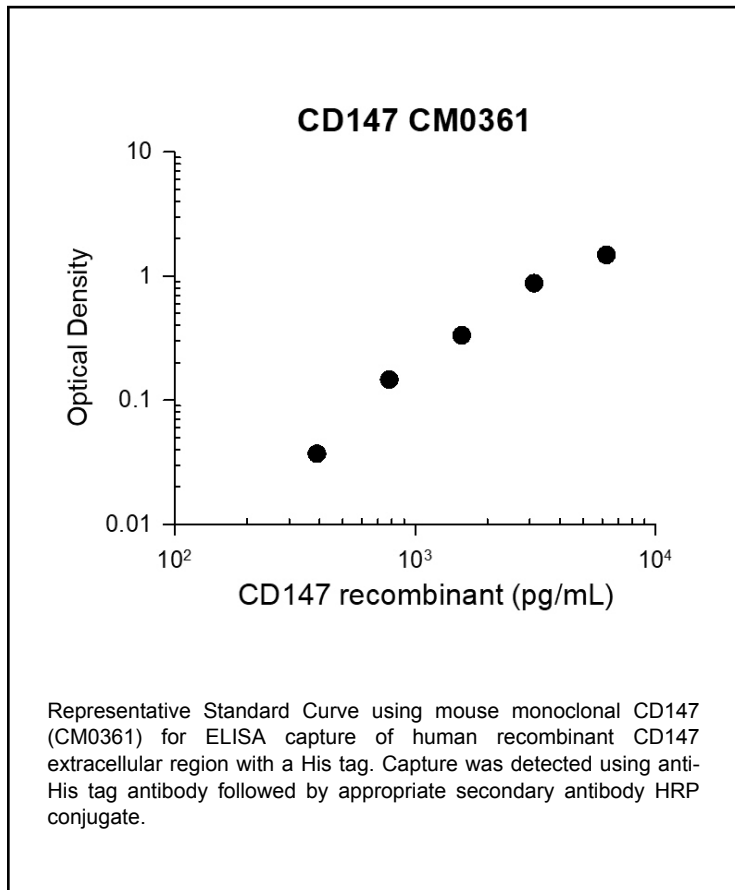
### Species Reactivity

Hu

**Isotype:** IgG2a

End user should determine optimal dilution for their particular applications. Western blot membranes were incubated with diluted antibody in 5% non-fat milk, Tris buffer, 0.04% Tween20 for 1 hour at room temperature.

Abbreviations: E = ELISA, ELISA (Cap) = ELISA Capture ICC = immunocytochemistry, IHC = immunohistochemistry, IP = immunoprecipitation, MS = mass spectrometry, WB = western blot.  
Hu = Human, Ms = Mouse, Rt = Rat, Ck = Chicken, F = Frog, B = Bovine



### Specificity

Clone M036 mouse monoclonal antibody detects a 38-58 kDa\* protein on SDS-PAGE immunoblots of human BEAS, NCI-H28, NCI-H1299, LNCaP, and A431 cells, as well as human brain tissues. The antibody works for western blot, immunoprecipitation, ELISA capture, and immunocytochemistry.

\*All molecular weights (MW) are confirmed by comparison to MW standards and to western blot mobilities of known proteins with similar MW.

"Native" western blot utilizes non-reducing sample buffer (no mercaptoethanol or SDS), normal SDS-PAGE gel electrophoresis, and no methanol in transfer buffers.

### Related Products

- CM0521 CD147/Emmprin/Basigin (Extracellular region) Mouse Monoclonal
- CM0341 CD63 (Extracellular region) Mouse Monoclonal
- CM0101 CD44 (Extracellular region) Mouse Monoclonal
- CM0011 CD98 (Extracellular region) Mouse Monoclonal
- CM0331 CD55 (Extracellular region) Mouse Monoclonal



FOR RESEARCH USE ONLY. NOT FOR DIAGNOSTIC OR THERAPEUTIC USE.