

Background

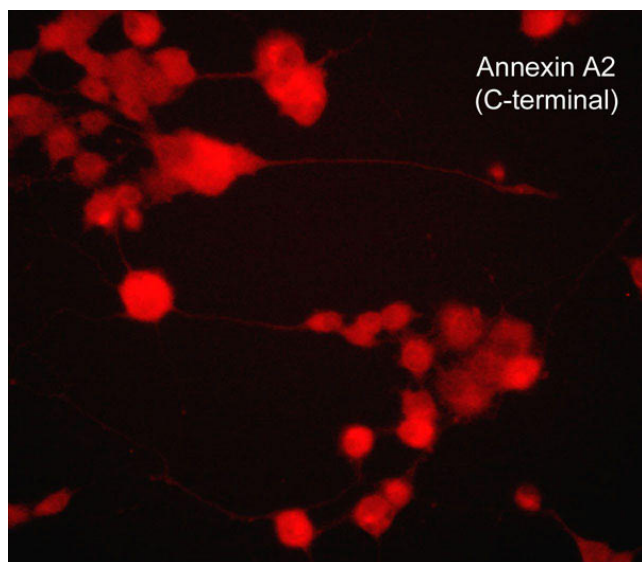
The Annexin family of calcium-binding proteins is composed of at least thirteen mammalian genes (Annexin A1-13). These proteins are characterized by a conserved core domain which binds to phospholipids in a Ca²⁺-dependent manner and a unique amino terminal region which may confer binding specificity. The Annexin family has been implicated as regulators of such diverse processes as ion-flux, endocytosis and exocytosis, and cellular adhesion. Annexin A2 (calpactin I, chromobindin 8, p36, Lipocortin II, PAP-IV, or Protein I) is a cytoskeletal calcium-dependent phospholipid binding protein, which has been shown to be a mediator of corticosteroid activity, a substrate for serine/threonine kinases and growth regulated tyrosine kinases, and may play a role in secretion. Annexin A6 reverses transformation of A431 cells after overexpression, and this effect may involve annexin A6 targeting of p120 RasGAP to the plasma membrane to inactivate Ras.



**Guaranteed
to
Outperform**

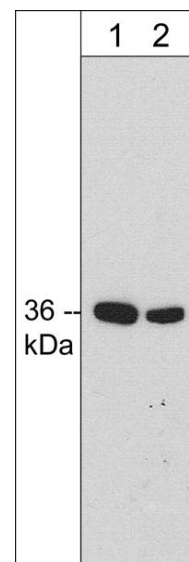
Background References

- Zokas, L. & Glenney, J.R. (1987) *J Cell Biol.* 105:2111.
Feinberg, J.M. et al. (1991) *J Histochem & Cytochem.* 39:955.
Grewal, T. & Enrich, C. (2006) *Bioessays* 28(12):1211.



Annexin A2
(C-terminal)

Immunocytochemical labeling of Annexin A2 in NGF-differentiated rat PC12 cells. The cells were fixed in paraformaldehyde and permeabilized using NP-40, then labeled with mouse monoclonal Annexin A2 (C-terminal region). The antibody was detected using goat anti-mouse DyLight® 594.



Western blot of rat PC12 cell lysate. The blot was probed with mouse monoclonal anti-Annexin A2 antibody at 1:250 (lane 1) or 1:1000 (lane 2).

FOR RESEARCH USE ONLY. NOT FOR DIAGNOSTIC OR THERAPEUTIC USE.

Immunogen

Uniprot ID: Q07936

Clone (M298) was generated from a recombinant sequence that included amino acids in the C-terminal region of rat Annexin A2.

Product Citations

Moylan, J. et al. (2014) Redox biology 2:910.

WB: C2C12 myoblast

Gilliam, L.A. et al. (2011) AJP Lung Cell Mol Physiol. 300:L225.

IHC: mouse diaphragm

Buffer and Storage

Mouse monoclonal, protein A purified antibody is supplied in 100µl phosphate-buffered saline, 50% glycerol, 1 mg/ml BSA, and 0.05% sodium azide. Store at -20°C. Stable for 1 year.

Applications

WB	1:1000
ELISA	1:2000
IP	1:50
ICC	1:50
IHC	1:50

Species Reactivity

Hu, Rt, Ms, Ck

Isotype: IgG1

End user should determine optimal dilution for their particular applications and experiments.

Western blot membranes were incubated with diluted antibody in 5% non-fat milk, Tris buffer, 0.04% Tween20 for 1 hour at room temperature.

Abbreviations: E = ELISA, ICC = immunocytochemistry, IHC = immunohistochemistry, IP = immunoprecipitation, MS = mass spectrometry, WB = western blot
Hu = Human, Ms = Mouse, Rt = Rat, Ck = Chicken, F = Frog, B = Bovine

Specificity

This antibody detects a 36 kDa* protein corresponding to the molecular mass of Annexin A2 on SDS-PAGE immunoblots of rat PC12 cells. The antibody has been shown to label Annexin A2 in immunocytochemical analysis of PC12 cells and immunohistochemical analysis of mouse diaphragm.

*All molecular weights (MW) are confirmed by comparison to MW standards and to western blot mobilities of known proteins with similar MW.

"Native" western blot utilizes non-reducing sample buffer (no mercaptoethanol or SDS), normal SDS-PAGE gel electrophoresis, and no methanol in transfer buffers.

Related Products

AM3301 Annexin A6 Mouse Monoclonal

AK6730 Annexin Family Antibody Sampler Kit

AM0091 Annexin A2 Mouse Monoclonal

CM2811 Caveolin-1 Mouse Monoclonal

CM2831 Caveolin-1 (Tyr-14), phospho-specific Mouse Monoclonal

PP1491 PLCγ1 (Tyr-775), phospho-specific Rabbit Polyclonal



FOR RESEARCH USE ONLY. NOT FOR DIAGNOSTIC OR THERAPEUTIC USE.