



# MATRYX E-START

Installation Instructions

Estimated Install Time: 2-3 Beers

# Kit Components

## Tools Needed:

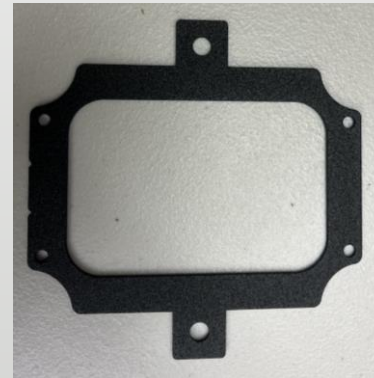
- Rivet Gun
- 13mm Wrench
- 10mm Socket
- 7/16" Wrench
- 1/4" & 3/16" Drill Bit
- 3 & 4mm Hex Tool
- T40 Wrench
- 7mm Socket
- Most Important, Beverage of Choice



Battery Box



Mounting Arm



Battery Box Cover



(4) Box Mounting Rivets



(1) 3/16" Flanged Rivet



Rivet Backer  
for Clamp



Cable Clamp



(1) M6 Screw and Nut  
for Solenoid Mounting

# STEP 1

You will need to remove the factory battery box. To do this remove the 3 fasteners holding the factory plastic on (Fig. 1-A).

Remove the battery from the tray.

Remove the fasteners holding the factory battery box in place, use a 13mm wrench to remove the bolt that is behind the muffler (if you have a boost model you can get the bolt out without removing the muffler, on a non-boost model it is easier to just remove the factory exhaust).

Once you remove the battery box you will then need to remove the factory mounting bracket on the footwell (Fig. 1-B), you will reuse one of the 5mm screws (7mm socket) and one M6 Locknut (10mm socket).

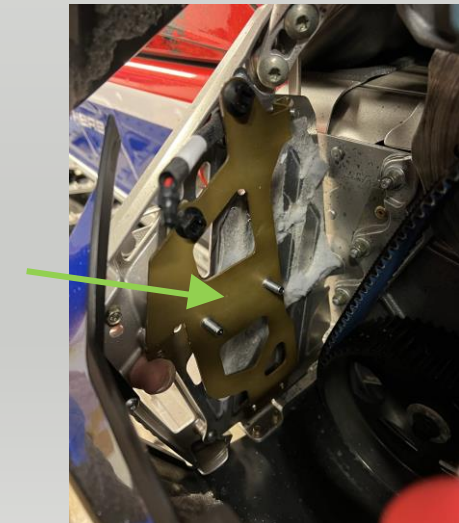
- On the boost models the patience needed to get the 13mm bolt out but it is way easier then removing the muffler from the turbo.



Fig. 1-A

Use the Spark plug wrench or a T40 bit to remove the two screws.

Fig. 1-B



# STEP 2

Unplug E-Start Harness from the Main Wiring Harness. You will have to cut the zip tie that is right above to plug on the over structure. Remove the start solenoid from the factory mounting location (Fig. 2-A).

Once the harness is out of the way remove the grey foam on the footwell (required)(Fig 2-B). You can also remove it on the belly pan if you would like(Fig 2-C).

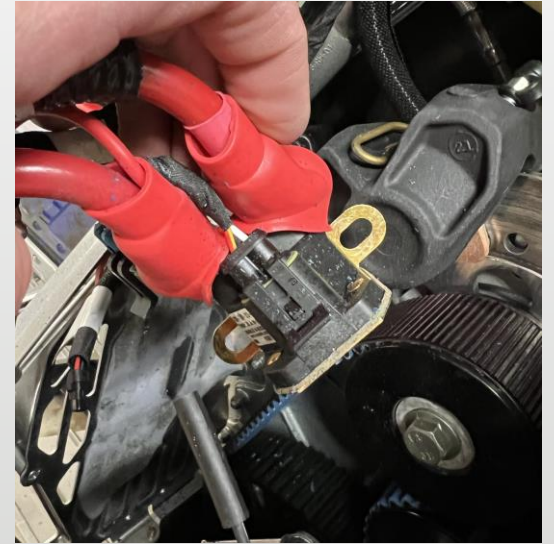


Fig 2-A



Fig. 2-B

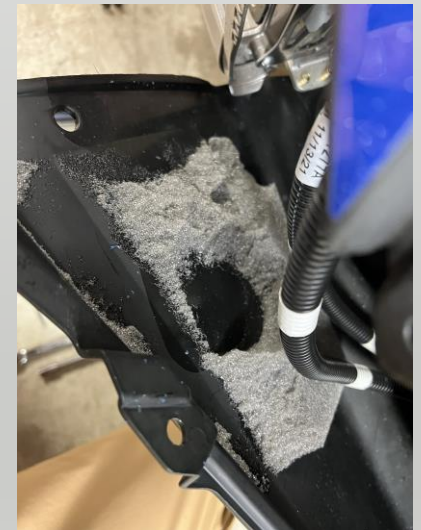


Fig 2-C



# STEP 3

Place the mounting bracket as shown in (Fig 3-A). You will reuse one M6 locknut (10mm) and the small M5 screw (3mm) that were removed with the factory battery box to secure the mounting bracket.

Drill a  $\frac{1}{4}$ " hole through the footwell using the hole highlighted in (Fig. 3-B) as a guide. Once the hole is drill remove the mounting bracket.



Fig. 3-A

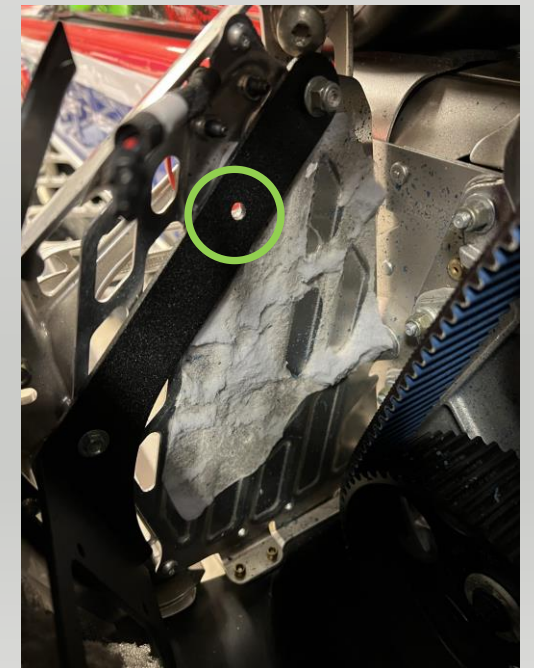
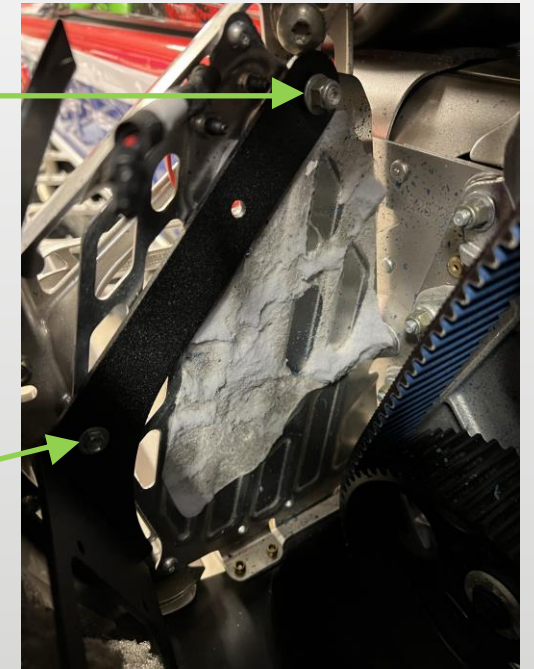
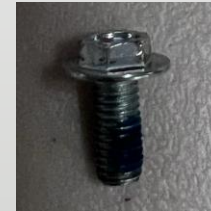


Fig. 3-B

# STEP 4

Rivet the battery box to the mounting bracket using the 4 pop-rivets supplied with the kit (Fig 4-A).

Install mounting bracket and battery box back onto the snowmobile fastening it with just the small M5 Screw (apply blue Loctite if available) at this time.

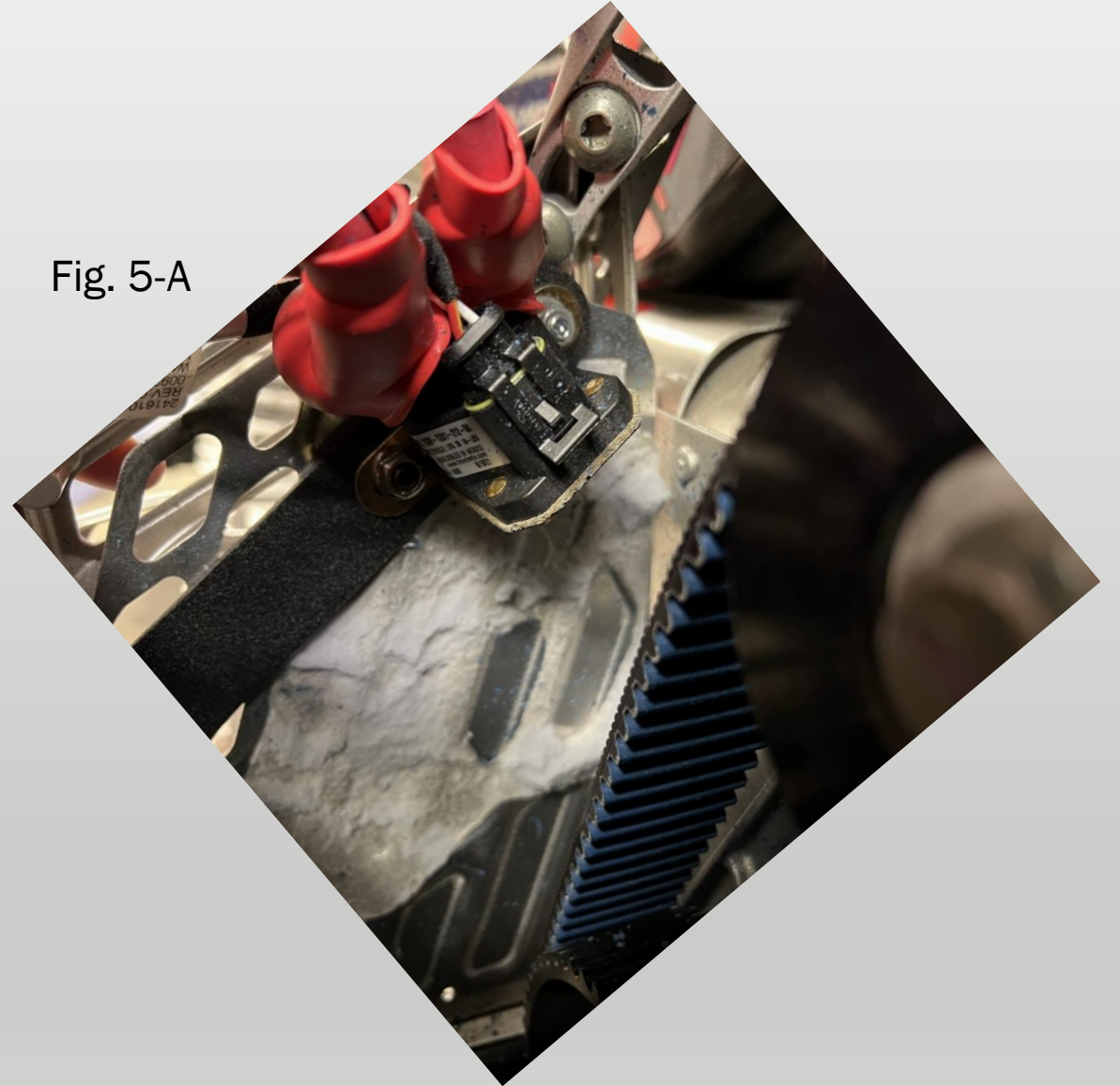


Fig. 4-A

# STEP 5

Mount the start solenoid in the orientation shown in Fig. 5-A. Secure the solenoid in place using the M6 locknut from the factory kit on the factory stud and also by placing the included M6 flanged screw and serrated lock washer included with kit through the hole that was drilled in the footrest during the previous step.

Fig. 5-A





# STEP 6

Place the battery in the battery box with the negative terminal closest to the exhaust. Install the battery box cover using the supplied  $\frac{1}{4}$ " locknuts ( $\frac{7}{16}$ " wrench) and attach the battery cables to the appropriate terminals, reference the orientation of the cables from the pictures on this page .

Then plug in the e-start harness to the main wiring harness. You will need to re zip tie the harness to the over structure.





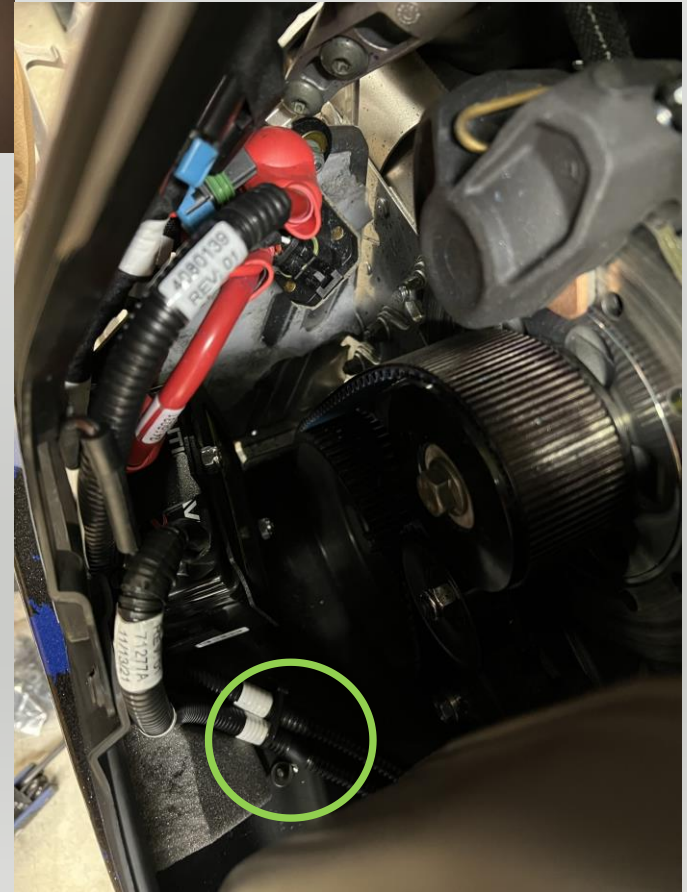
# STEP 7

(optional but strongly recommended)

Place supplied wire clamp around one of the battery cables running to the starter motor and place in a location on the belly pan that give adequate clearance away from the muffler.

Drill 3/16" hole in the belly pan where your clamp is.

Pop-riquet the clamp in place using the supplied large flanged rivet and washer. It is best to place the rivet from the outside of the sled into the internal side.



# STEP 8

MISSION COMPLETE!!! Time to have a cold refreshing beverage of your choice!!!

GO OUT AND ENJOY!

Stay Safe and Remember to Check Your Local Avalanche Forecast Before Traveling Into the Backcountry!

