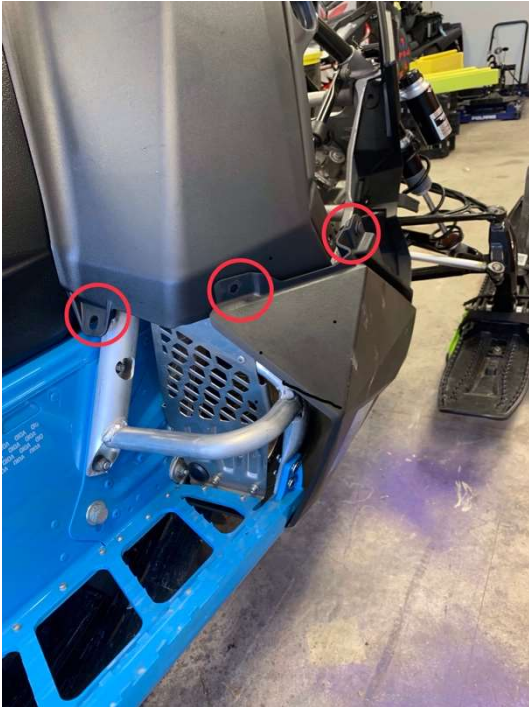


Lightweight E-Start Installation Instructions

Step 1:

Remove exhaust side panel and Tufflock Rivets shown below.



Step 2:

If replacing a factory installed E-Start Kit remove existing battery box and attached components.

If installing new factory E-Start kit skip to Step 3.

Step 3:

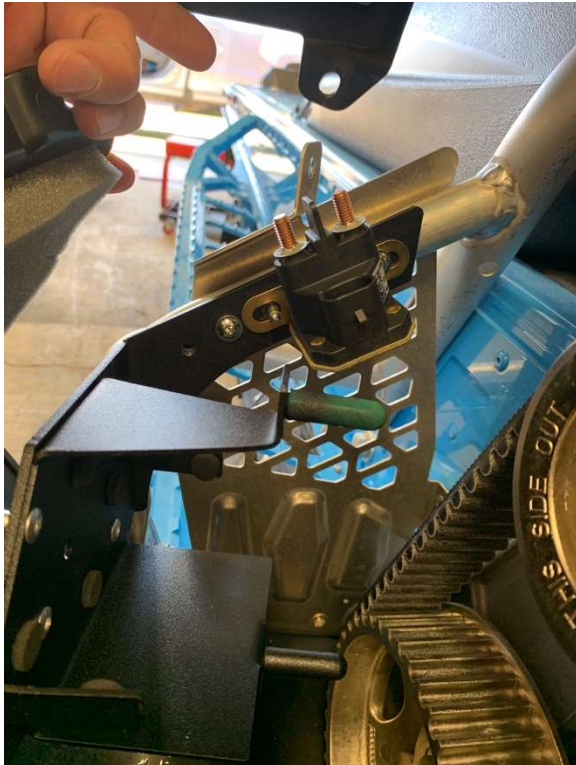
Take the battery box mounting bracket supplied in the kit and use the supplied (2) M5 x .8 screws to temporarily attach the mounting bracket to the factory rivet-nuts on toe loop support. Use a 3/16" drill bit and drill toe loop support in both locations A & B. Drill hole "B" completely through the toe loop support.



NOTE: Depending on the tools you have on hand it may be easier to complete Step 5B with the mounting bracket off the snowmobile before you complete Step 4 & 5A. I find it easier to place the rivets this way if you have an air rivet gun. If you have a manual hand rivet gun follow the installation steps in the order below.

Step 4:

Locate the factory start solenoid and place in location shown below. Remove the M5 x .8 screw that is closest to the tunnel and with the connections on the solenoid facing up re-insert M5 x .8 screw that was previously removed by loosely so the solenoid can move freely. Using the longest 3/16" rivet supplied in the kit, insert it from the exterior of the snowmobile through the hole "B" and place the rivet washer on the inside and fasten. Once the rivet is fastened tighten the M5 x .8 screw.



Step 5:

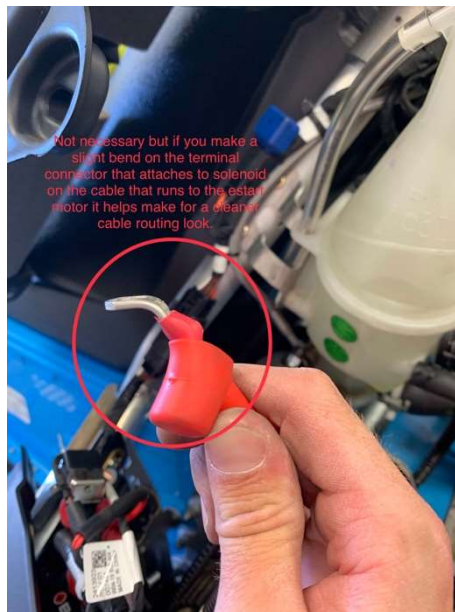
- A) Install 3/16" flanged rivet into hole "A".
- B) Install the supplied battery box onto the mounting bracket using the 4 – 3/16" rivets with the heads to the inside of the bracket. You may need to use a 3/16" drill bit to clean out the coating in the holes to make for easy pass-through.

Step 6:

Install the 8-cell Antigravity Battery with the positive terminal facing towards the back of the snowmobile and put on battery box cover plate.

Step 7:

Route and install the battery cables and e-start harness using the below pictures for reference.



Step 8:

Install factory panels and Enjoy. Thanks again for your purchase!!



Please contact Cole with any installation related questions at:
(989)372-1723 or cole@cvcustoms.com