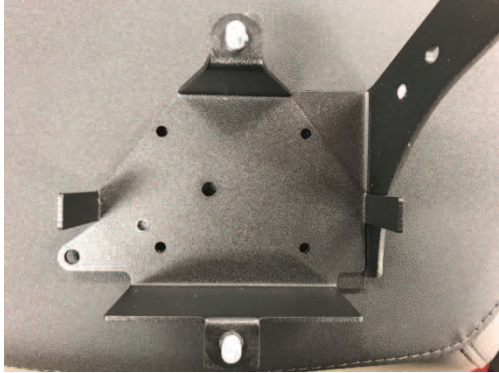


Chaincase Battery Box Installation

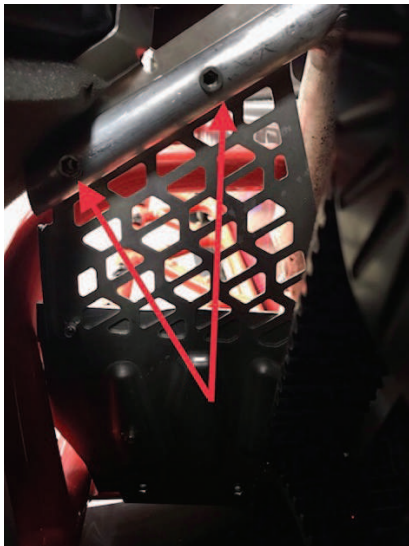
Step 1: Assemble mounting bracket and battery box together using the 4 supplied standard pop rivets. You may need to use a 3/16" drill bit to removed the thin layer powder coat from holes for rivet clearance.



Step 2: Remove exhaust side panel and push dart connector circled once side panel is removed.



Step 3: Locate the (2) factory mounting locations on the upper support tube inside the foot well.



Step 4: Use the supplied M5X0.8 fasteners to attach the bracket to the factory bouncing locations. Use blue thread locker on the bolts.



*Note: It is also highly recommended to drill a 3/16" hole in the mounting tube using the pilot holes highlighted in the above picture as a guide and place the additional 3/16" flange head rivets included in the highlighted locations. This reduce stress on the factory mounting inserts and give additional level of protection against pull out of the factory mounting inserts.



Please contact Cole with any installation related questions at:
(989)372-1723 or cole@cvcustoms.com