

SKI DOO G4 850 S&E MODULE BULK HEAD BRACE KIT

• APPLICATION: SKI DOO G4 850 (2017-2020)

PART NUMBER: K40-0805-0



KIT INCLUDES:

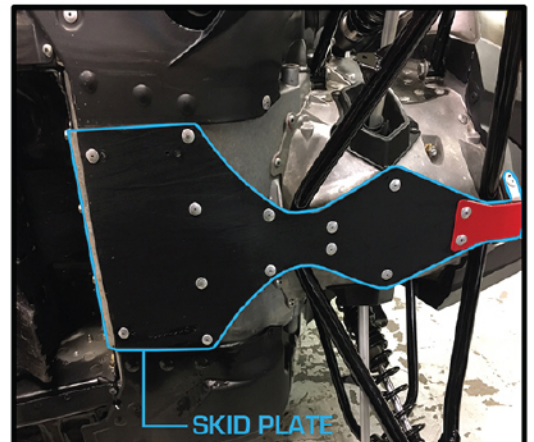
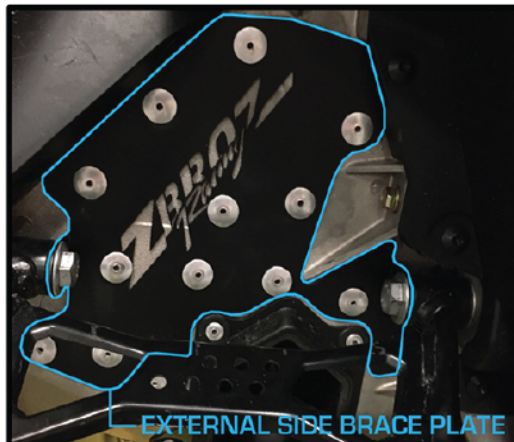
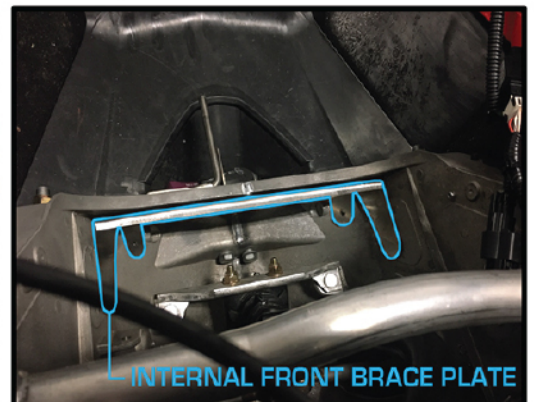
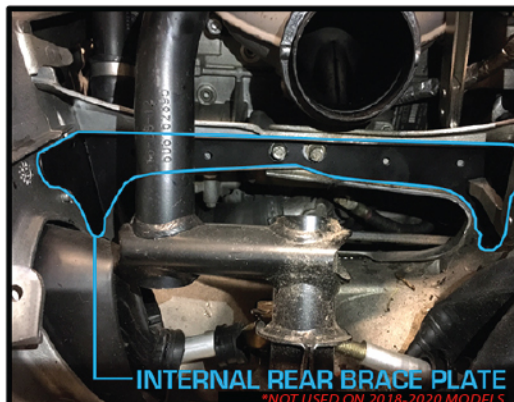
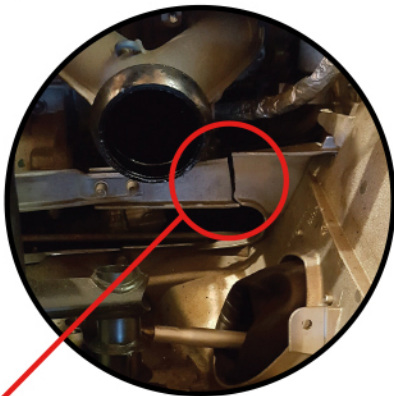
- (1) SKID PLATE
- (1) INTERNAL FRONT BRACE PLATE
- (1) INTERNAL REAR BRACE PLATE
- *NOT USED ON 2018-2020 MODELS*
- (2) EXTERNAL SIDE BRACE PLATES

HARDWARE:

- (31) 1/4" LONG STEEL RIVETS
- (8) 1/2" LONG STEEL RIVETS
- (16) 3/4" LONG STEEL RIVETS

TOOLS REQUIRED:

- RIVET GUN
- DRILL
- 16MM END WRENCH
- 15MM SOCKET
- 3/16" DRILL BIT

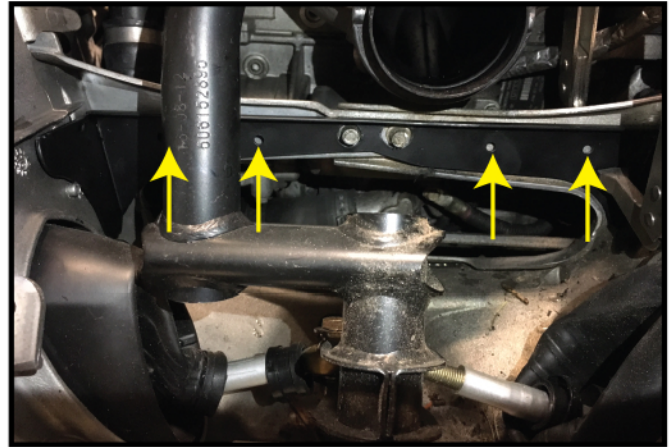


AVOID THESE COMMON BULK HEAD BREAKS

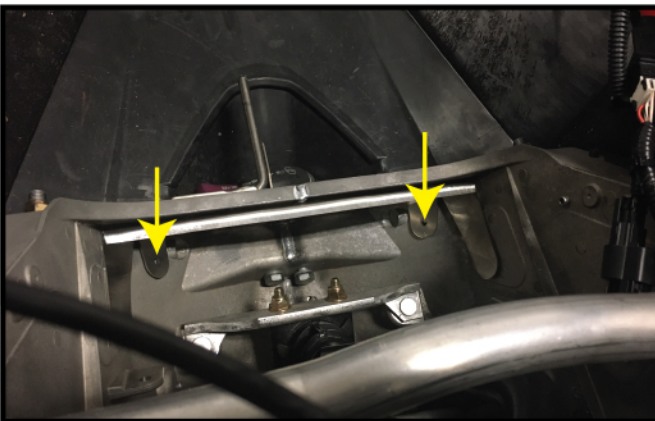




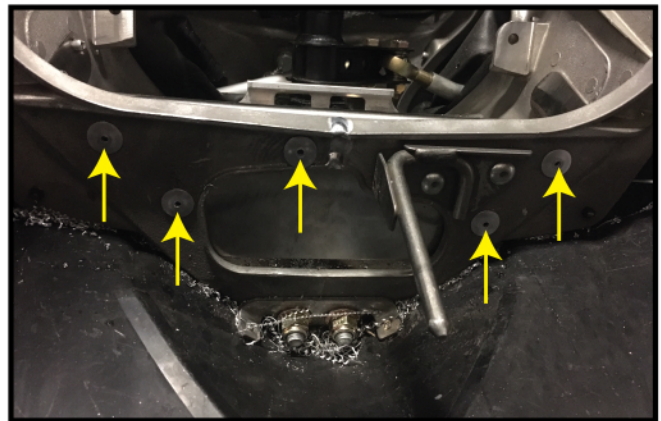
1. REMOVE HOOD, PIPE, SKI SHOCKS AND UPPER A-ARMS.



2. INSERT INTERNAL REAR BRACE PLATE. CLAMP AGAINST REAR CROSS MEMBER AND DRILL (4) 3/16" HOLES. RIVET IN PLACE WITH 1/4" LONG STEEL RIVETS.
*SKIP THIS STEP WHEN INSTALLING ON 2018-2019 MODELS.



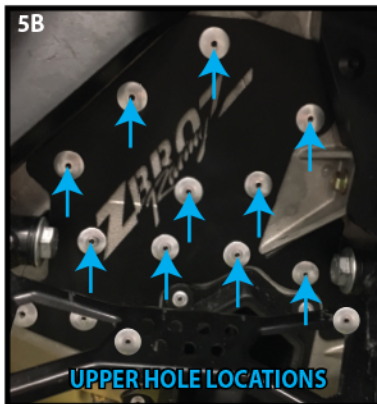
3. INSERT INTERNAL FRONT BRACE PLATE. CLAMP AGAINST FRONT STOCK CROSS MEMBER, DRILL (2) HOLES AND RIVET IN PLACE WITH (2) 1/4" LONG STEEL RIVETS.



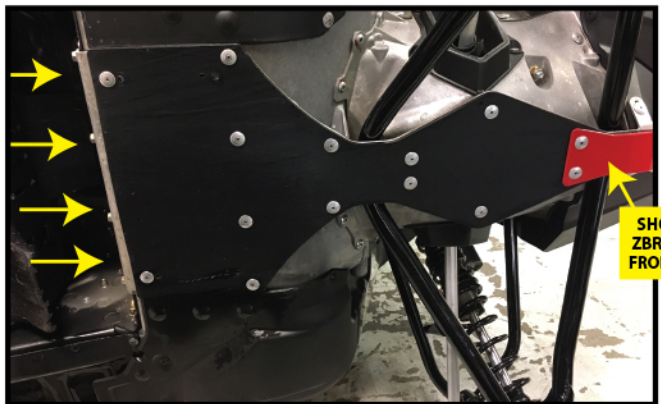
4. DRILL (5) HOLES INTO FRONT FACTORY MODULE AND THROUGH BRACE PLATE. RIVET IN PLACE WITH (5) 1/4" STEEL RIVETS.



5A. ALIGN EXTERNAL SIDE BRACE PLATE BY INSTALLING UPPER A-ARM BOLTS THROUGH BRACE PLATE WING TABS. DRILL (4) LOWER HOLE LOCATIONS AND RIVET IN PLACE USING (4) 1/2" RIVETS (SEE YELLOW ARROWS).



5B. DRILL (10) UPPER HOLE LOCATIONS AND RIVET IN PLACE USING (10) 1/4" LONG RIVETS (SEE BLUE ARROWS).



6. TURN SLED ONTO SIDE AND INSTALL SKID PLATE. UNBOLT AND REUSE (4) FACTORY BOLTS (SEE ARROWS). DRILL AND RIVET FRONT SIDE MOUNT USING (2) 3/4" LONG RIVETS TO POSITION SKID PLATE. THEN DRILL AND RIVET REMAINING (14) LOCATIONS USING 3/4" LONG RIVETS.