

La Rêveuse

LARB1802 Series User Guide



LARB1802S



LARB1802P

P.S Cup and Sip&Seal Lid quantity maybe be subject to change as marketing demand.

Table of Contents

Important Safeguards -----	01
Box Contents-----	06
Technical Specifications and Features-----	07
How to Use the Blender-----	07
How to Maintenance -----	10
Trouble Shooting-----	11
Warranty-----	12

IMPORTANT SAFEGUARDS

PLEASE READ ALL INSTRUCTIONS BEFORE OPERATING THE
La Réveuse BLENDER AND SAVE THIS INSTRUCTIONS.

WARNING!

1. Do not use appliance for other than intended purpose. When using electrical appliances, basic safety precautions should always be followed, including the following.
2. To protect against risk of electrical shock, do not put cord, plug, or base in water or other liquid.
3. This appliance has a polarized plug (one wide blade) that reduces the risk of electric shock. The plug fits only one way into a polarized outlet. Do not defeat the safety purpose of the plug by modifying the plug in any way or by using an adapter. If the plug does not fit fully into the outlet, reverse the plug. If it still does not fit, contact a qualified electrician. **Do not modify the plug in any way.**
4. Do not operate any appliance with a damaged cord or plug or if the appliance malfunctions, or is dropped or damaged in any manner. Contact Customer Service for assistance in obtaining a replacement.
5. The length of the cord used on this appliance was selected to reduce the hazards of becoming tangled in or tripping over a longer cord. If a longer cord is necessary, an approved extension cord may be used. The electrical rating of the extension cord must be equal to or greater than the rating of the appliance. Care must be taken to arrange the extension cord so that it will not drape over.
6. Unplug cord from outlet when not in use, before putting on or taking off parts, and before cleaning or assembling.
7. Do not pull, twist or mistreat the power cord.
8. The use of attachments, including canning jars, not recommended or sold by the appliance manufacturer may cause fire, electric shock or a risk of injury to persons and void any applicable warranty.

BLENDER SAFEGUARDS

1. Avoid any contact with blades or moveable parts.
2. Keep hands and utensils away from the cutting blade or jar while blending to reduce the risk of severe injury to persons or damage to the blender. A rubber spatula may be used but must be used only when blender is not running.
3. Blades are sharp; handle carefully—especially when cleaning inside blender jar.
4. **NEVER BLEND CARBONATED BEVERAGES!** Released gases can cause pressure to build up and the container to burst, resulting in possible injury.
5. Never run the **La Réveuse** without food or liquid contents in any of the cups.
6. Do not blend hot liquids.
7. **NEVER KEEP THE BLADE RUNNING FOR MORE THAN ONE MINUTE AT A TIME, AS IT CAN CAUSE PERMANENT DAMAGE TO THE MOTOR.** If the motor stops working, unplug the Power Base and let it cool for a few hours before attempting to use it again. Your **La Réveuse** has an internal thermal breaker that shuts off the unit when it overheats. Letting the thermal breaker cool down should allow the Power Base to reset.
8. Do not attempt to defeat the cover interlock mechanism.
9. Always operate blender with cover in place.
10. Never feed blender container food by hand, always use the plunger.
11. If the cutting unit blades lock and do not move, it will damage the motor. Do not use.

Where can we use the La Réveuse blender?

1. Always use your La Réveuse blender on a clean, flat, hard, dry surface, never on cloth or paper . which may block the fan vents and cause overheating.
2. This appliance accessory is intended for household use only. Use for food or liquids only.
3. Do not use outdoors if exposed to inclement weather elements. Do not use in the rain or in wet conditions.
4. Do not let cord hang over edge of table or counter, or touch hot surfaces, including the stove.
5. Close supervision is necessary when any appliance is used by or near children.
6. The countertop or tabletop where it can be pulled on by children or accidentally tripped over.
7. Do not place on or near a hot gas or electric burner or in a heated oven.
8. Do not place blender jar in the freezer filled with food or liquid. This will freeze and damage the cutting unit, jar, and motor.
9. Do not use appliance for other than intended use.

Please check before you use La Réveuse blender.

1. Always completely assemble the cross blade and cup before placing on power base; never insert or store the cross blade in base unless attached to a cup.
2. Do not use a broken, chipped, or cracked blender jar.
3. Do not use broken, cracked, or loose cutting blades. Be certain that the cross blade is completely and firmly screwed on to the cups or Party Mug before operating appliance, To reduce the risk of injury.
4. Always operate blender with lid in place.
5. Before using the cross blade, check the gasket to make sure it is not damaged and it is completely seated in the cross blade unit before each use.
6. Make sure the blade is complete dry before re-inserting the gasket.

MICROWAVE SAFEGUARDS



CAUTION:

NEVER MICROWAVE UNVENTED, SEALED CONTAINERS AS THEIR CONTENTS MAY EXPAND WITH HEAT PRESSURE AND EXPLODE, RESULTING IN INJURY OR PROPERTY DAMAGE. DO NOT USE THE SOLID LID IN THE MICROWAVE, USE ONLY THE VENTED LIDS.



WARNING:

NEVER MICROWAVE CUPS WITH THE BLADE ATTACHED TO THE CUP. THE METAL IN THE BLADE MAY SPARK, OR FIRE AND MAY RESULT IN INJURY OR DAMAGE TO PROPERTY.

1. To prevent possible injury, always use protective oven gloves and direct steam away from hands and face.
2. Follow the precautions and recommendations found in your microwave oven instruction manuals, specifically the overall heating times, but never run microwave longer than 2 minutes consecutively. Heat for 2 minutes. Let the food sit for 2 minutes, remove from microwave, open the container and carefully stir, then heat for 2 minutes again.
3. Do not use excessive amounts of time when heating water or liquids in the microwave, and do not exceed more than 2 minutes consecutively.
4. Do not overheat the liquid.
5. Superheated Water – Liquids such as water, coffee, tea or soups are able to be overheated beyond the boiling point without appearing to be boiling. Visible bubbling or boiling when the container is removed from the microwave is not always present. This could result in very hot liquids suddenly boiling over when the container is disturbed or a spoon or other utensil (such as a **La Réveuse** blade) is inserted into the liquid. To reduce the risk of injury to persons.
6. Stir the liquid both before and halfway through heating it to avoid eruption.

7. Use extreme care when inserting a spoon or other utensils into the container.
8. Avoid heating baby food or formula in **La Rêveuse** cups.
9. Don't defrost frozen beverages in **La Rêveuse** cups (especially carbonated beverages). Even if the container is opened, pressure can build up. This can cause the container to burst, possibly resulting in injury.
10. Hot foods and steam can cause burns. Be careful when removing **La Rêveuse** cups from the microwave when they contain hot foods and liquids.
11. Do not overcook food. Carefully attend to appliance when **La Rêveuse** Cups are placed inside an operating microwave.
12. After heating, allow the container to stand in the microwave for a short time before removing container.
13. After microwaving, always use heat resistant pads to handle **La Rêveuse** cups. Allow the ingredients to settle for a moment and then carefully open the lid pointing the container away from your body as escaping steam and moisture may cause scalding burns.

Box Contents



Note:

1. Power Cord and User guide is not shown here, but you will find it out in the box.

2. Cup and Sip&Seal Lid quantity maybe be subject to change as marketing demand.

If LARB1802 series equip with 2 pieces or more Cups and Sip&Seal Lids , and whatever how many pieces cups you received, cup size is same .

Technical Specifications and Features

- Voltage :120V 60Hz
 - Power:300 Watt
 - Motor Speed:12500RPM
 - Cup capacity: 18 oz. (550ml)
 - Food Grade Tritan Material, BPA-free Cups
 - 4 Leaves High speed Stainless Steel blade , Strong enough to crush vegetables and fruit easily
 - High Quality Pure Copper Motor, Long Service Life Design
 - Self-serving size and Sip&Seal lids , that are easy to take to the gym, work, school or for days out
 - Dishwasher safe (blade is excluded)
- Note: Cup and Sip&Seal Lid quantity maybe be subject to change as marketing demand. If LARB1802 series equip with 2 pieces or more Cups and Sip&Seal Lids . and whatever how many pieces cups you received, cup size is same .

How to Use the Blender

ASSEMBLY AND OPERATION

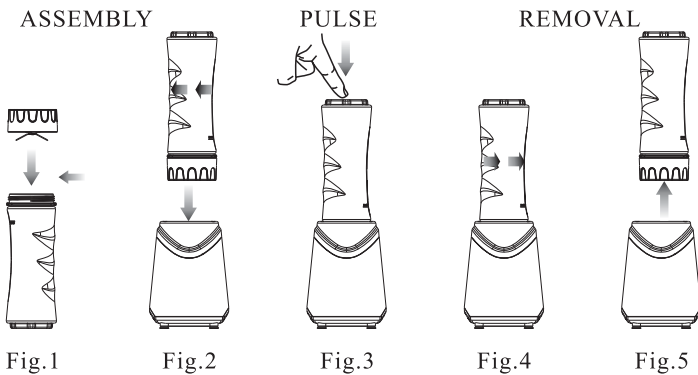
Note:Please read the 1st-3rd page safeguard again before you use it.thanks.

- 1 . Take out the blender and remove all packaging material and labels from the appliance.
- 2 . Wash the lids, cups and blades assembly in warm, soapy water with a soft cloth.

CAUTION: Handle the blades assembly with care when washing, as the blades are very sharp.

3. Rinse and dry thoroughly.

4. Cups, lids and blades assembly are all dishwasher safe. It is recommended that the lids and blades assembly be placed on the top rack. Ensure that the blades assembly are removed from the cups before placing in the dishwasher.
5. Wipe the motor base clean with a damp cloth.
6. Place the motor base on a clean, dry, level surface such as a counter or table top.
7. Ensure that the blender is unplugged from its power source, take cup and fill with ingredients up to the max fill line .
8. Place the blades assembly onto the cup and twist it on tightly until you have a good seal. (Fig. 1)
9. Turn the cup upside down and place it onto the motor base, aligning the tabs on the cup with the motor base. Turn it clockwise, now , it is ready for use.(Fig. 2)
10. Plug in the blender.Press down on the top of the cup in short intervals to activate. (Fig. 3)
11. When you have reached your desired consistency, stop the appliance by removing your hand from the cup. Wait for the motor to stop running. Then turn the cup counterclockwise (Fig. 4) and pull straight up to remove. (Fig. 5)



12. Turn the cup upright and remove the blades assembly by twisting the blades assembly counterclockwise. Be sure to store the blades assembly attached to an empty cup when not in use.

13. Place the Sip & Seal lid onto the cup, twist to seal and enjoy!

14. Make sure that the motor base is unplugged when not in use.

FUNCTION	CUP	SUGGESTED FOOD
Nutrient Juices / Smoothies	18 oz	Fruits
		Vegetables
		Leafy Greens
Mixing	18 oz	Batters
		Dips
Sauces	18 oz	Vinaigrettes
		Salad Dressings
		Simple Sauces
Note:		
1. When blending sauces and soups, make sure they're cooled to room temperature first - the containers are not intended for hot blending.		
2. This product is not intended for dry blending , Please DO NOT process dry ingredients without adding liquid to the cup.		
3. DO NOT suggest for frozen blending or chopping.		

How to Maintenance

CAUTION: Make sure that the motor base is unplugged from the power source before inserting or removing any attachment and before cleaning.

CAUTION: DO NOT immerse the motor base into water or any other liquid.

CAUTION: Handle the blades assembly with care, as the blades are very sharp.

1. Separate/remove all parts from each other.
2. Clean the motor base with a damp cloth and wipe dry.
3. Place the cups, lids and blades in the top rack of the dishwasher. Or Carefully hand wash the lids, cups and blades assembly in warm, soapy water with a soft cloth.
4. Always clean the product before storing.
5. Store the **La Réveuse** blender upright. Do not place anything on top. Store the cups and the rest of the attachments along side the appliance where they will not be damaged and won't cause a hazard.
6. Store in a dry dark place, keep it out of sunlight.

Trouble Shooting

PROBLEMS POSSIBLE	REASONS & SOLUTIONS
Motor doesn't start or Blades Assembly doesn't rotate	For the cups, make sure that the tabs are seated in the slots and turned clockwise.
Cup is leaking.	Make sure that your lid or Blades Assembly is properly assembled to the cup. Leaking may occur if it is misaligned when twisted onto the cup. Turn the lid tightly clockwise.
Unit doesn't turn on.	Make sure the unit is plugged in. Rotate and press down on the cup to turn the unit on. Make sure the Blades Assembly is properly assembled to the cup and that it is not misaligned.
Unit doesn't turn off.	Unplug the power cord from the electrical outlet and call customer service for support.
Doesn't mix well.	Pulse ingredients for best results. Press down on the cup in short intervals, but not more than 1 minute.
Lid / Blades Assembly will not properly align to the cup.	Set the cup on a level surface. Place the lid or Blades Assembly on top of the cup and align the threads so that the lid/blades sit flat on the cup. Twist clockwise so that the lid/blades evenly align to the cup until you have a tight seal.
It appear unusual smell when initial use	It is normal that appear unusual smell in the initial uses. It will not appear this kind of situation after several uses . It will appear unusual smell if use the product for too long time, then you must close the product let it cool for 30 minutes.

Warranty

We would like to thank you for choosing the **La Rêveuse** blender.

La Rêveuse will replace any part (usually, cups or Blades Assembly, excluding Motor Base) which fails 1 years from date of original purchase, provided the failure is due to a defect in material or workmanship under normal use within the operation specifications. The only exception shall be when proof of purchase or installation is provided and then the warranty period shall be from the date thereof. **La Rêveuse** blender are warranted to be free from defects in materials and workmanship under normal use within the operation specifications for a period of 1 year limited warranty from the date of original purchase.

General Conditions **La Rêveuse**'s obligation to the customer under these warranties shall be limited, at its option, to replacement items covered by these warranties. Prior to return of covered items, the customer must obtain a return goods authorization number from **La Rêveuse** and at **La Rêveuse**'s option, return the item freight prepaid at the customer's expense. Any covered item replaced under these warranties will be returned prepaid standard freight to the original point of shipment. Damage to any part of this blender because of misuse, misapplication, negligence, alteration, accident, installation, or operation contrary to our instructions, incompatibility with accessories not installed by **La Rêveuse**, or damage caused by freezing, flood, fire, or Acts of God are not covered by this warranty. In all such cases, regular charges will apply. This limited warranty does not include service to diagnose a claimed malfunction in this unit.

***IMPORTANT: Carefully pack item to avoid damage in shipping. Be sure to attach a tag with purchase information, include purchase date ,your name, complete address, model number phone number ,order ID and what you believe is the problem with the item before packing .**

Please contact with us if you need any support,
support@reveuseblender.com