

GENERAL POWER TOOL SAFETY WARNINGS

⚠WARNING **READ ALL SAFETY WARNINGS AND INSTRUCTIONS.** Failure to follow the warnings and instructions may result in electric shock, fire and/or serious injury. *Save all warnings and instructions for future reference.*

WORK AREA SAFETY

•Keep work area clean and lit. Cluttered or dark areas invite accidents.

ELECTRIC SAFETY

•Do not expose heated jacket to rain or wet conditions. Water will increase the risk of electric shock.

•Do not abuse the power cable. Never use cord for carrying, pulling or unplugging the heated jacket. Keep cord away from heated, oil, sharp edges or moving parts.

PERSONAL SAFETY

•Stay alert, watch what you are doing and use common sense when using the heated jacket. Do not use while you are tired or under the influence of drugs, alcohol or medication. A moment of inattention may result in serious personal injury

POWER TOOL USE AND CARE

•Do not use the heated jacket if the power button does not turn it on and off. Any heated jacket that cannot be controlled with the power button is dangerous and must be repaired.

•Disconnect the battery pack from the heated jacket before storing. Such preventive safety measures reduce the risk of starting the heated jacket accidentally.

•Store out of the reach of children and do not allow persons unfamiliar with these instructions to operate the heated jacket.

•Maintain heated jacket. Check for breakage of parts and any other condition that may affect the heated jacket's operation. If damaged, have the heated jacket

repaired before use.

•Use the heated jacket in accordance with these instructions, taking into account the working conditions. Use of the heated jacket for operations different from those intended could result in a hazardous situation.

BATTERY TOOL USE AND CARE

•Press on/off button once to start the battery and power the heated jacket.

•Recharge only with the charger provided by the manufacturer. A charger that is suitable for one type of battery pack may shorten the lifetime of battery and have a risk of fire when used with another battery pack.

•Use heated jacket only with specifically designated battery packs. Use of any other battery packs may create a risk of injury and fire.

•When battery pack is not in use, please fully charge it before you place it in the safe place. Additionally, you must recharge the battery every 3 months to lengthen its working life.

•When battery pack is not in use, keep it away from other metal objects like paper clips coins, keys nails, screws, or other small metal objects that can make a connection from one terminal to another. Shorting the battery terminals together may cause burns or a fire.

•Under abusive conditions, liquid may be ejected from the battery; avoid contact. If contact accidentally occurs, flush with water. If liquid contacts eyes, additionally seek medical help. Liquid ejected from the battery may cause irritation or burns

SERVICE

·Have your heated jacket serviced by a qualified repair person using only identical replacement parts. This will ensure that the safety of the heated jacket is maintained.

SPECIFIC SAFETY RULES

Read instructions carefully.

Use:

·Do not use this heated jacket with an infant, child, helpless person, or anyone insensitive to heat, such as a person with poor blood circulation.

·If you have a medical condition making you sensitive to overheating, or you use any personal medical devices, consult the devices, consult the device manufacturer and/or your physician to determine if use of this product is appropriate.

·Never use if inner liner is wet

·Heating elements are not recommended to touch bare skin.

·Shut off power immediately if discomfort occurs.

·Do not allow the cords to be pinched. If improper operation of this heated jacket is observed, discontinue its use immediately and contact Ptahdus customer service for repair.

·Do not use pins. They may damage the electric wiring.

·If the heated jacket does not start or operate properly with a fully charged battery pack, clean the contacts on the battery pack. If the heated jacket still does not work properly, contact Ptahdus customer service at support@ptahdusgear.com

Care:

·Disconnect and remove battery pack from battery holder pocket before washing.

·Push the power cord completely into the battery holder pocket and fasten closed.

·Machine wash, Gentle Cycle in warm water. Tumble Dry Low Heat.

·Do not bleach.

·Do not iron.

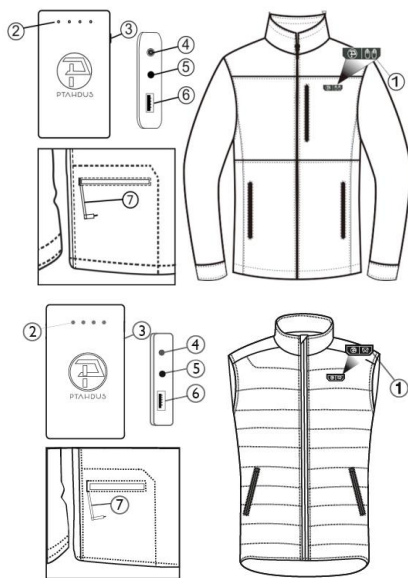
·Do not wring or twist.

·Do not dry clean. Do not use dry-cleaning fluid on this heated jacket. Do not bleach. Cleaning solvents may have a deteriorating effect on the insulation of the heating element.

ACCESSORIES

⚠WARNING Always remove battery pack before changing or removing accessories. Only use accessories specifically recommended for this tool. Others may be hazardous.

FUNCTIONAL DESCRIPTION



1. Jacket and Pocket Power Buttons
High: Red Led
Medium: White Led
Low: Blue Led
2. Power Indicator Light
3. Power Button
4. Power Cable Port
5. Type-C Charging Port
6. USB Cable Port
7. Power Cable

ASSEMBLY

⚠WARNING Recharge only with the charger specified for the battery. For specific charging instructions, read the operator's manual supplied with your charger and battery.

·Inserting/Removing the Battery

- To **insert** the battery, slide the pack into the body of the battery holder. Make sure it latches securely into place.
- Insert the power cable (from inside the battery holder pocket) into the power cable port on the battery holder.
- Place the battery holder into the pocket and press pocket closed.
- To **remove** the battery, push in the release buttons and pull the battery pack away from the holder.

OPERATION

Heated Appeal:

- The power button is located on the upper left side of the jacket.
- To **turn on**, press and hold the heated jacket power button (2 seconds). The jacket will be turned to High and the red LED will light.
- Heat setting can be adjusted at any time by pressing the heated jacket power button. Each press will cycle through the heated jacket's 3 heat settings.
- To **turn off** the heated jacket, press and hold the heated jacket power button until the LED turns off 2 seconds.
- If the heated jacket turns off unexpectedly, check connections and charge the battery pack.

Battery:

- Plug in the battery with the type-c charger, then the blue led light will start to flash, which means it is being charged. It needs about 2.5-5 hours to charge fully depended on the temperature. **When it is fully charged, all the blue led lights will shut off automatically in 30 seconds.**
- When the battery power runs out, please

recharge it in time to prolong the life span of the battery.

- If you find any situation different with the normal mentioned above, please stop using the battery immediately and contact us via support@ptahdusger.com to get help.

CARE

⚠WARNING To reduce the risk of injury, always unplug the charger and remove the battery pack and battery holder from the heated jacket before performing any maintenance. Never dis-assemble the heated jacket, battery pack or charger. Contact Ptahdus customer service for ALL repair.

- If the heated jacket does not start or operate properly with a fully charged battery pack, clean the contacts on the battery pack. If the heated jacket still does not work properly, return the heated jacket, charger and battery pack, to Ptahdus customer service for repairs.

⚠WARNING To reduce the risk of personal injury and damage, disconnect and remove battery pack and battery holder from battery holder pocket before washing. Never immerse your battery holder, battery pack, or charger in liquid or allow a liquid to flow inside them.

To clean the heated jacket:

- 1.Remove battery pack and battery holder.
- 2.Push the power cord completely into the battery holder pocket and fasten closed.
- 3.Machine wash, Gentle Cycle in warm water. Do not use bleach. Do not dry clean. Do not wring or twist.
- 4.Tumble Dry on Low Heat. Do not iron.