



SONATA SERIES

Usage and Care Manual

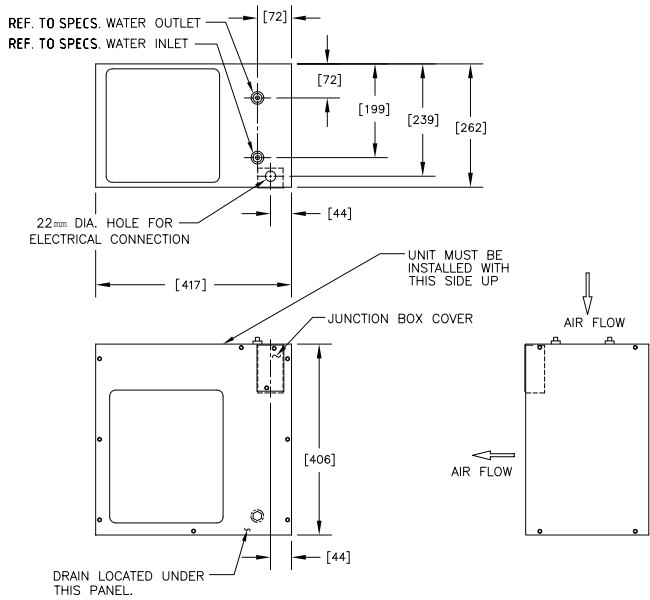
Models: SMC30, SMC45 and SMC75

Your Partner in Cool.

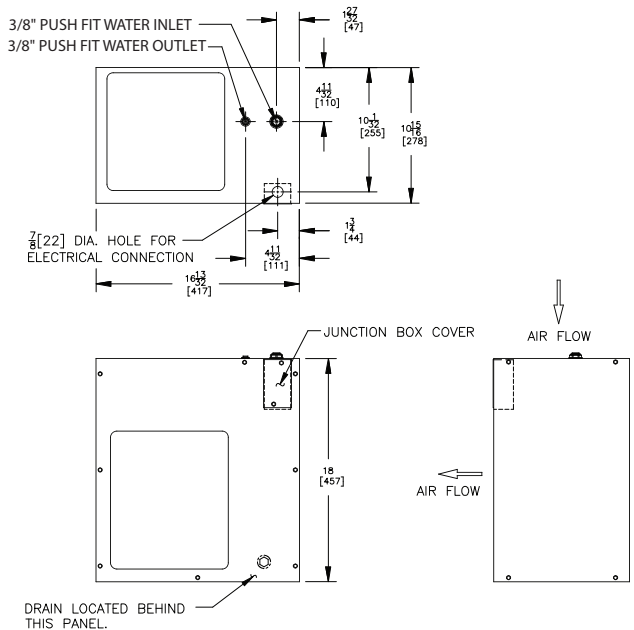
AQUA
COOLER

PRODUCT DIAGRAM

SMC30/45



SMC75



TECHNICAL SPECIFICATIONS

Housing Material	Stainless steel		
Refrigeration	Uses R134A refrigerant		
Water Connections	SMC 30	Water Inlet / Outlet	¼" Push Fit
	SMC 45	Water Inlet / Outlet	¾" Female NPT Thread
	SMC 75	Water Inlet / Outlet	¾" Push Fit
Thermostat Control	The thermostat is factory set		
Power Consumption	SMC30		550 W
	SMC45		620 W
	SMC75		814 W
Electrical	220-240 V, 50/60 Hz		
Warranty	Twelve month comprehensive coverage.		

INSTALLATION PROCEDURE

Electrician Needed For Installation

1. This unit is a remote water cooling package suitable for mounting in most locations. CAUTION: If located in a recess or alcove, the ventilated sides of the cooling unit requires a minimum of 5" clearance from walls. This unit is not intended for cabinet or under-sink installation.
2. Locate and install plumbing and electrical service in accordance with the dimensional drawing. Pressure Regulating Valves are to be used with water pressures above 5 Bar.
3. Connect water supply tube from WATER-IN tube on cooling unit to the shut-off valve. If a filter is to be installed, place it in-line between the shut-off valve and the WATER-IN tube on the cooling unit.
4. A filter kit is available for retrofit to this system. Refer to kit instructions for installation. **WARNING: Do not flush filter until WATER-OUT connection is made.** A bracket or clip can be used to secure the filter. Refer to the "Product Diagram" of the unit in which the filter is to be installed for specifics on use and location. Pre-punched holes are already located where the filter will be mounted.
5. Make connection to WATER-OUT tube on cooling unit.
6. Check the available power supply against the cooling unit data plate to assure correct electrical service. Make service connections to the outlet box.
7. Turn on power and water supply to the cooling unit. After cooling unit has filled as evidenced by the absence of the audible filling sound, draw off water until no air bubbles are seen in the water stream.

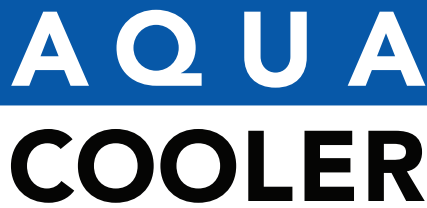
CLEANING AND MAINTENANCE

Cleaning

The only maintenance operation required is the removal of dirt and lint from the condenser. Inspection should be made at 3 month intervals. When condenser requires cleaning, remove dirt and lint with a vacuum cleaner. Observance of this procedure will insure adequate air circulation through the condenser so operation is efficient and economical.

Lubrication

This unit is equipped with a hermetically sealed compressor and requires no additional lubrication. The fan motor on this unit seldom needs oiling, but if required, a few drops of SAE 10 oil should be used.



AQUA
COOLER

Your Partner in Cool.

Phone Numbers

Sales: 1300 278 226
Service: 1800 278 226

Address

U14, 2-12 Knobel Court
Shailer Park QLD 4128

Internet

www.aquacooler.com.au
info@aquacooler.com.au