

WALL-RECESSED BOTTLE FILLER

Wall-recessed mains-connected bottle fillers

This wall-recessed, plumbed-in bottle filler comes with hands free dispensing and can produce 30L/h of cold drinking water.



KEY FEATURES

- High efficiency cooling system and refrigerant R-134a
- Stainless steel finish with heavy duty steel frame
- Built-in 100 micron strainer stops particles before they enter the waterway
- Waterways are lead free in materials and construction
- Optional filtration system for taste, odour and chlorine reduction
- Sensor activated water flow

These wall-recessed bottle fillers are refrigerated, dispensing 30L/H with hands-free dispensing mechanisms and featuring a 100-micron strainer to stop particles entering the lead-free waterway. The heavy-duty galvanised steel frame makes the unit extra durable, perfect for high-volume applications. All refrigerated fountains use R-134a refrigerant and have an efficient, high-performing refrigeration system.

All bottle fillers are made with proprietary Freshield technology. Freshield harnesses the natural bacteria-fighting power of silver by infusing it into a poly compound on moulded parts of the alcoves.

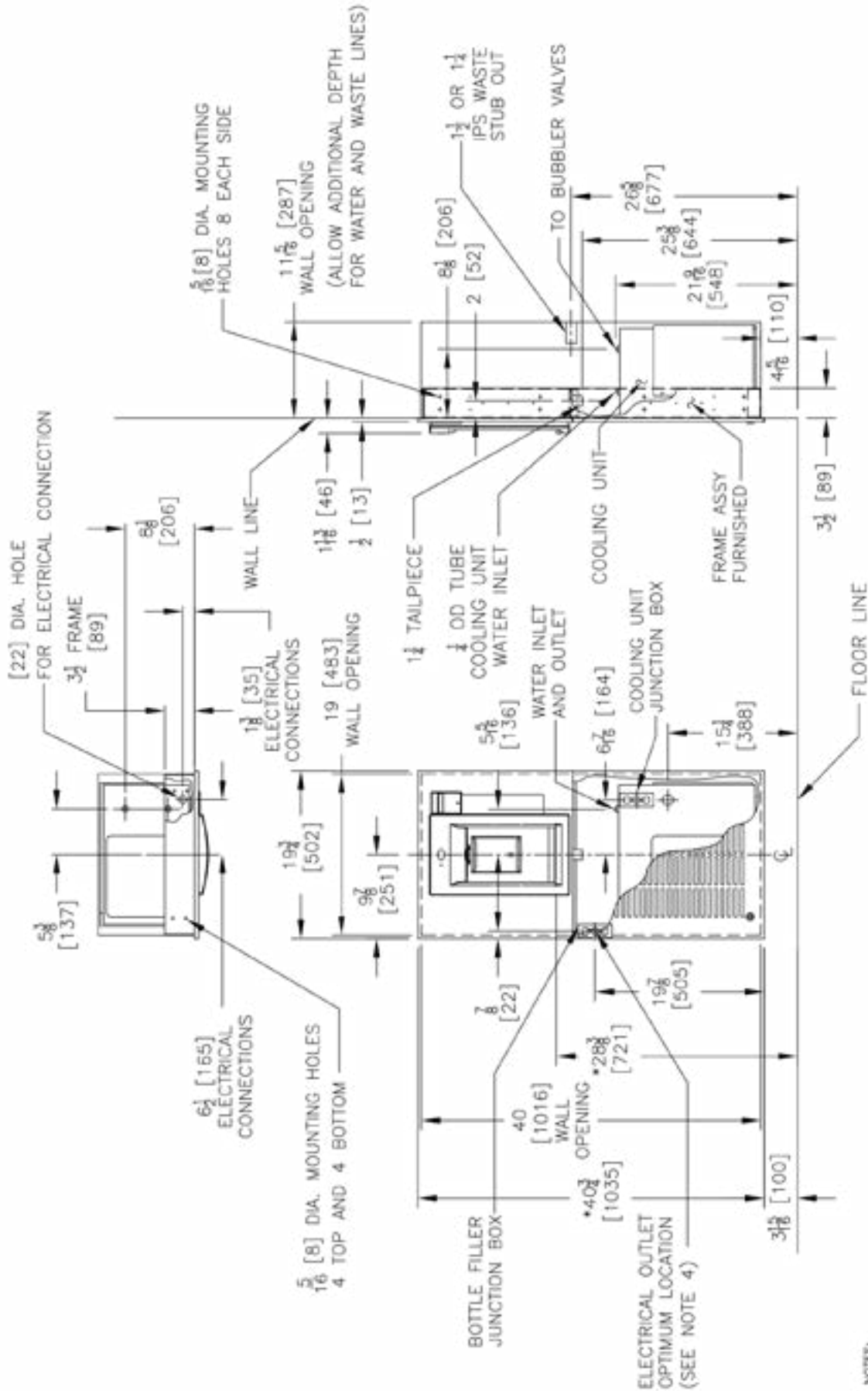


Model Information (AC-MW8EBFY)

Activation	Contactless (Infrared Sensor)
Sensor Coverage	Up to 5cm (approx.)
Filtration	Filter (optional), Built-in 100 micron strainer
Exterior	Antimicrobial ABS Plastic, Brushed Stainless Steel
Chassis	Heavy Duty Galvanised Steel
Dimensions	1035(H) x 502(W) x 46(D) (287 recessed)
Alcove Height	265mm
Net Weight	35kg
Power Supply	220-240V, 50/60 Hz
Cooling Performance	60 LPH - Rated Capacity & Base Rate - (10°C in 21°C amb. temp.)
Full Load Amps	2.2 A
Rated Watts	347 W
Country of Origin	Mexico
Certifications	WaterMark, ANSI/NSF 61, CABO/ANSI A117.1, ADA, CE (LVD, EMC, RoHS)
Warranty	1 Year Full, 2 Years Parts Only

Your Partner in Cool.

AQUA
COOLER



NOTES:

- RECOMMENDED ADULT HEIGHT INSTALLATION SHOWN. ADJUST VERTICAL DIMENSIONS AS REQUIRED TO COMPLY WITH FEDERAL, STATE AND LOCAL CODES.
- STOP VALVE, TRAP, PIPING CONNECTOR TO WASTE LINE NOT PROVIDED. SHORT RADIUS TRAP REQUIRED.
- ALL DIMENSIONS ARE IN INCHES. DIMENSIONS IN BRACKETS [] ARE IN MILLIMETERS.
- 115V GROUNDED NORTH AMERICAN DUPLEX RECEPTACLE REQUIRED. THIS DRINKING WATER COOLER IS INTENDED TO BE CONNECTED TO A 20A MINIMUM GROUND FAULT CIRCUIT INTERRUPTING (GFCI) DEVICE TO MEET ALL REQUIREMENTS.