



# OASIS SERIES

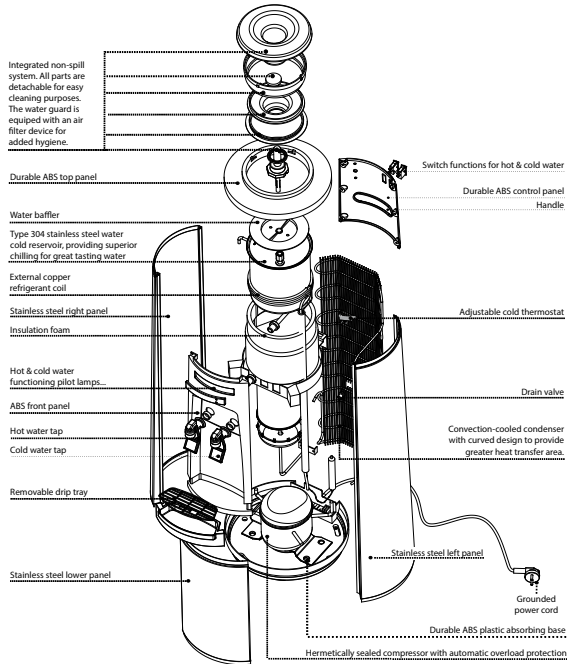
## Usage and Care Manual

**Models:** OMCCF, OBCC, OMCC, OMHCF,  
OBHC, and OMHC.

Your Partner in Cool.

**AQUA**  
**COOLER**

# PRODUCT DIAGRAM



# TECHNICAL SPECIFICATIONS

Water Reservoir	Cold	4 L	
	Hot	1.2 L	
Housing Material	Plastic with stainless steel side panels and corner peices		
Refrigeration	Uses R134A refrigerant		
Water Connections	Water Inlet	1/4" quick-connect tube fitting	
Thermostat Control	The thermostat is factory set		
Capacity	Cold	5 L/h	
	Hot	2 L/h	
Power Consumption	Main-Connected	Cold	85 W
		Hot	400-800 W
	Bottled	Cold	100 W
		Hot	400-800W
Electrical	220-240 V, 50/60 Hz		
Warranty	Twelve month comprehensive coverage. Three year compressor replacement.		

# IMPORTANT SAFETY INSTRUCTIONS

When using electrical appliances, basic safety precautions should be followed to reduce the risk of fire, electric shock, and injury to persons or property. Read all instructions before using any appliance.

1. Do not let hot water touch bare skin.
2. Keep combustible material such as furniture, bedding, pillows, clothes, and/or papers away from the back of the unit.
3. Do not operate this, or any other appliance, with a damaged power cord.
4. No other appliance should be plugged into the same outlet. Be sure that the plug is fully inserted into the outlet.
5. Do not run the power cord over carpeting or other heat insulators.
6. Do not cover the power cord.
7. Keep the power cord away from high traffic areas.
8. Do not submerge the power cord in water.
9. We do not recommend the use of extensions cords as they may overheat and cause a risk of fire.
10. Exercise caution and use reasonable supervision when the appliance is used by or near children.
11. Do not use your water dispenser outdoors.
12. Place the water dispenser away from direct sunlight and make sure that there is at least 10 cm of space between the back of your unit and wall. Keep a minimum of 5 cm on each side of your unit free.
13. Do not use this product to dispense anything other than water.
14. This appliance must be placed on an even and flat surface.
15. If the supply cord is damaged, the manufacturer, on of its service agents or a similarly qualified person must replace it in order to avoid a hazard.
16. This water cooler must be positioned so that the plug is accessible.
17. Disconnect the plug from the outlet when not in use.
18. Remove power plug or disconnect from the main power source before servicing the appliance.

## IMPORTANT INFORMATION ABOUT GROUNDING

- To provide additional protection from the risk of shock, this unit **MUST** be connected to a residual-current device (RCD) outlet at all times. Use of an extension cord will void any warranties.
- This appliance must be grounded. Improper use of the grounding plug can result in a risk of electric shock, causing serious injury and possibly death.
- This appliance is equipped with a power cord having a grounding wire with a grounding plug and must be connected into a properly-grounded, polarised outlet.
- Consult a qualified electrician if the grounding instructions are not completely understood, or if doubt exists as to whether the appliance is properly grounded. If the wall outlet is a standard, 2-prong outlet, it is your personal responsibility and obligation to have it replaced with a properly-grounded, 3-prong wall outlet.
- Do not under any circumstances cut or remove the third (ground) prong from the power cord plug. Do not use an adapter plug with this appliance.

# UNPACKING THE WATER COOLER

1. After unpacking the water cooler, wipe with a soft cloth.
2. Place the machine on a hard, flat surface. Make certain the unit is level. The unit should not be close to direct sunlight or other sources of heat.
3. It is best to place the water cooler in an area with good air circulation. Make sure there is at least 10 cm of space between the back of your cooler and the wall. Keep a minimum distance of 5 cm on each side of your water cooler.

**WARNING** - The drain cap on the back of the unit may become loose during shipping. Fasten the drain cap tightly before you start to operate the unit. If the drain cap is loose, the unit may leak and cause floor damage.

# INSTALLATION PROCEDURE

1. Make sure the water dispenser is not plugged into an electrical outlet.
2. Insert the water bottle vertically into the non-spill system of the water dispenser.
3. Press the hot water tap down until water begins to flow then let go of the hot water tap.
4. Insert the power plug into an electrical outlet.
5. For the cook and cold model: Switch the cold water switch to the ON position.  
For the hot and cold model: Switch the hot water and cold water switch to the ON position.

# OPERATION

After the water bottle has been connected to the water cooler, the unit is ready for use. For the hot and cold model, turn the power switch on the back of the unit to the ON position to begin heating. Water will flow from the bottle into the hot and cold reservoirs, and then the unit's compressor will start to operate. The first time the water cooler is used, you will have to wait at least 45 minutes for cold water and 30 minutes for hot water.

For the cook and cold model:

- To dispense cook (ambient) water, press the cook tap down.
- To dispense cold water, press the cold tap down.

For the hot and cold model:

- To dispense hot water, press the hot water tap down.
- To dispense cold water, press the cold water tap down.

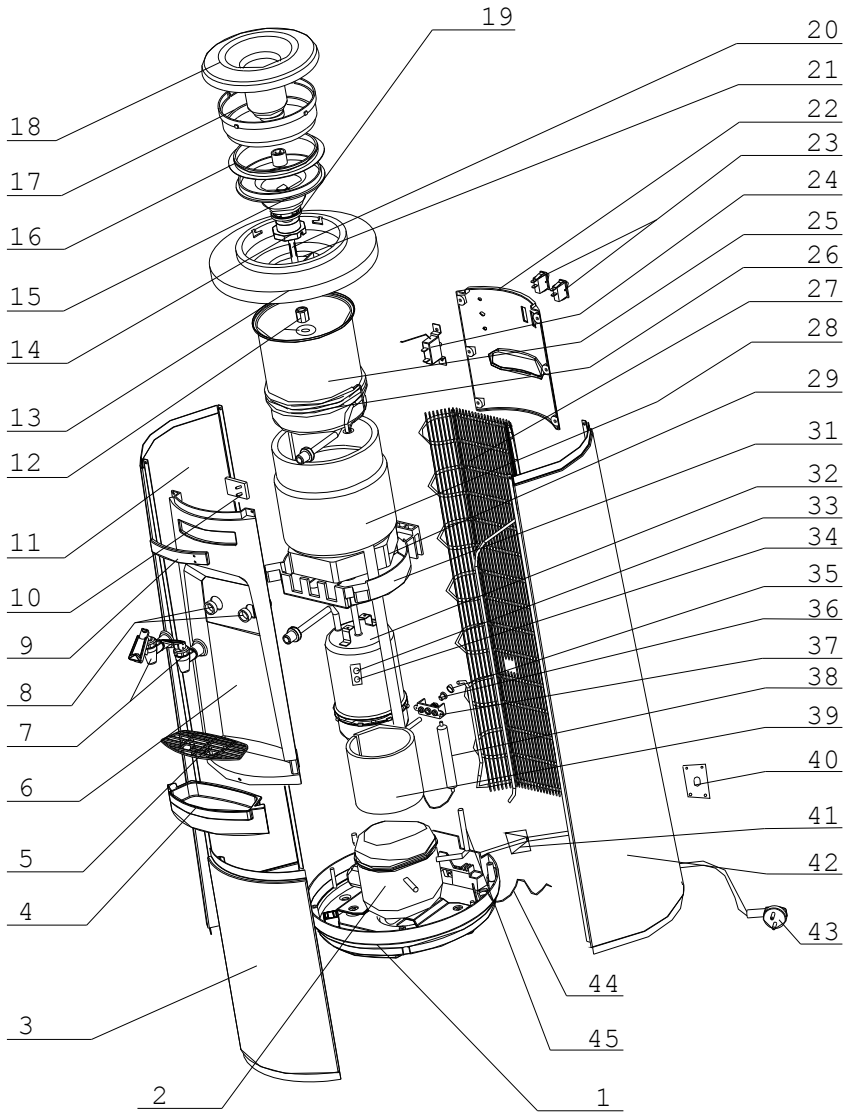
# TROUBLESHOOTING

Problem	Possible Cause	Remedy
The unit does not dispense hot and cold water.	Unit is unplugged or main power supply is off.	Plug the power cord into an outlet and re-establish main power supply.
	The fuse has blown.	Replace the blown fuse.
	Damaged water dispenser.	Contact Aqua Cooler service team.
	The water bottle cap is not attached properly to the connector on the water cooler.	Connect properly. There will be a give when the hose cap slides properly over the connector.
Unit does not dispense cold water.	Over consumption of cold water in a short time.	Wait for 15 minutes while the water cools and try again.
	System malfunction.	Contact Aqua Cooler service team.
	The ventilation around the unit is insufficient.	Ensure sufficient ventilation space around the unit.
	The temperature of the water in the water bottle is too high.	Ensure the unit is not placed in direct sunlight or close to other heat sources.
	The cold water switch is in the OFF position.	Switch the cold water switch to the ON position.
Unit does not dispense hot water. (Hot water model only)	Cold water baffle is not set properly.	Secure the cold water baffle in the cold tank.
	Over consumption of hot water in a short time.	Wait for 15 minutes while the water heats and try again.
	System malfunction.	Contact Aqua Cooler service team.
Unit is noisy during operation.	The hot water switch is in the OFF position.	Switch the hot water switch to the ON position.
	The appliance is not level.	Place the unit on a level, flat surface.
Water leaks from the faucet.	Unit is touching other objects.	Ensure the unit is standing free of any surrounding objects.
	The top portion of the faucet has come loose.	Tighten the top threaded portion of the faucet.
Water is dripping out of the water cooler and onto the floor.	The faucet has been damaged.	Contact Aqua Cooler service team.
	The hose connector is not connected properly.	Make sure the hose connector is properly connected.
	The inside hot or water tanks are leaking	Contact Aqua Cooler service team.
	The drain cap on the back is not fastened correctly.	Tighten the drain cap. If the sealing silicon material inside the drain cap is torn or damaged, then replace with a new one.
The water being dispensed has a strange taste.	Crack or pin holes in the bottle.	Replace with a new bottle.
	This is not uncommon with new water coolers. Do not worry, this is not dangerous to your health.	Clean the hose in the dishwasher (top rack only) or let it soak in dish soap. The strange taste usually goes away after the first bottle has been consumed.

# CLEANING AND MAINTENANCE

- Remove or disconnect power before performing any maintenance or servicing the product.
- Never use detergent or chemicals to clean the water tanks.
- If dust or other exterior substance has accumulated on the condenser, wipe off with water-soaked soft cloth.
- Do not directly spray water on the surface of the product. Wipe the front and back of the product with water-soak soft cloth.
- After cleaning the product, ensure it is completely dried before beginning use again.

# EXPLODED DIAGRAM

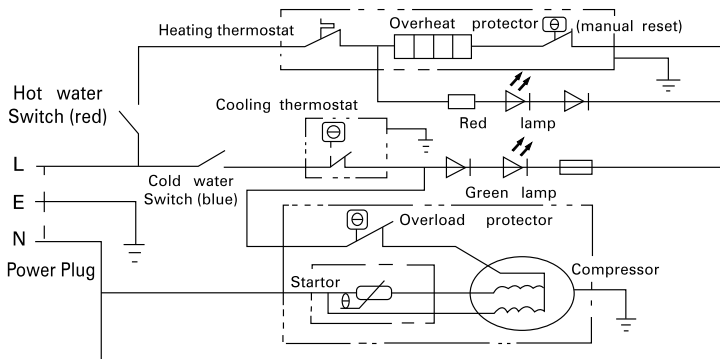



# SPARE PART LIST

#	Description	Code
1	Bottom supporting plate	SPO1
2	Compressor	SPO2
3	Lower panel	SPO3
4	Drip tray	SPO4
5	Drip tray cover	SPO5
6	Upper panel	SPO6
7	Hot & cold water tap	SPO7
8	Seal of tap	SPO8
9	Brand panel	SPO9
10	Indicator light circuit board	SPO10
11	Left sheet metal	SPO11
12	Stainless steel nut of inlet	SPO12
13	Top cover	SPO13
14	Non-spill guied	SPO14
15	Non-spill base	SPO15
16	Seal of non-spill system	SPO16
17	Non-spill lock	SPO17
18	Non-spill system	SPO18
19	O-ring of non-spill system	SPO19
20	Non-spill post	SPO20
21	Split flow plateswitches fixing board	SPO21
22	Switches fixing board	SPO22

#	Description	Code
23	Hot & cold switch	SPO23
24	Cold thermostat	SPO24
25	Cold tank	SPO25
26	Evaporator	SPO26
27	Condenser	SPO27
28	Foam of cold tank body	SPO28
29	Foam of cold tank bottom	SPO29
31	Upper supporting plate	SPO31
32	Hot tank	SPO32
33	Hot thermostat	SPO33
34	Hot thermostat (out)	SPO34
35	Cap of drain tube	SPO35
36	Drain plug	SPO36
37	Bracket of drain tube	SPO37
38	Drier	SPO38
39	Insulation of hot tank body	SPO39
40	Cable enter tube	SPO40
41	Ac power cord	SPO41
42	Right panel	SPO42
43	Cable with plug	SPO43
44	Wiring	SPO44
45	Liquid enter tube	SPO45

# ELECTRICAL DIAGRAM



The logo for Aqua Cooler is centered in the upper half of the page. It consists of the word 'AQUA' in white, bold, sans-serif capital letters on a dark blue rectangular background. Below this, the word 'COOLER' is written in black, bold, sans-serif capital letters on a white rectangular background. The background of the entire page is a dynamic splash of clear blue water against a light blue sky, with many bubbles and droplets visible.

# AQUA COOLER

Your Partner in Cool.

**Phone Numbers**

Sales: 1300 278 226

Service: 1800 278 226

**Address**

U14, 2-12 Knobel Court

Shailer Park QLD 4128

**Internet**

[www.aquacooler.com.au](http://www.aquacooler.com.au)

[info@aquacooler.com.au](mailto:info@aquacooler.com.au)

m0004

This document is available digitally on our website at [www.aquacooler.com.au/doc/m0004](http://www.aquacooler.com.au/doc/m0004)