



MAXIMUS SERIES

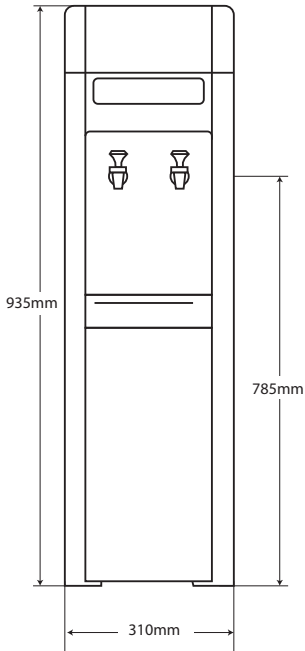
Usage and Care Manual

Models: XMCC, XMCCF

Your Partner in Cool.

AQUA
COOLER

PRODUCT DIAGRAM



TECHNICAL SPECIFICATIONS

Water Reservoir	Cold	14 L	
Housing Material	Plastic with stainless steel side panels and corner peices		
Refrigeration	Uses R134A refrigerant		
Water Connections	Water Inlet	¼" quick-connect tube fitting	
Thermostat Control	The thermostat is factory set		
Capacity	Cold	6.5 L/h	
Power Consumption	Main-Connected	Cold	85 W
Electrical	220-240 V, 50/60 Hz		
Warranty	Twelve month comprehensive coverage. Three year compressor replacement.		

IMPORTANT SAFETY INSTRUCTIONS

When using electrical appliances, basic safety precautions should be followed to reduce the risk of fire, electric shock, and injury to persons or property. Read all instructions before using any appliance.

1. Do not let hot water touch bare skin.
2. Keep combustible material such as furniture, bedding, pillows, clothes, and/or papers away from the back of the unit.
3. Do not operate this, or any other appliance, with a damaged power cord.
4. No other appliance should be plugged into the same outlet. Be sure that the plug is fully inserted into the outlet.
5. Do not run the power cord over carpeting or other heat insulators.
6. Do not cover the power cord.
7. Keep the power cord away from high traffic areas.
8. Do not submerge the power cord in water.
9. We do not recommend the use of extensions cords as they may overheat and cause a risk of fire.
10. Exercise caution and use reasonable supervision when the appliance is used by or near children.
11. Do not use your water dispenser outdoors.
12. Place the water dispenser away from direct sunlight and make sure that there is at least 10 cm of space between the back of your unit and wall. Keep a minimum of 5 cm on each side of your unit free.
13. Do not use this product to dispense anything other than water.
14. This appliance must be placed on an even and flat surface.
15. If the supply cord is damaged, the manufacturer, on of its service agents or a similarly qualified person must replace it in order to avoid a hazard.
16. This water cooler must be positioned so that the plug is accessible.
17. Disconnect the plug from the outlet when not in use.
18. Remove power plug or disconnect from the main power source before servicing the appliance.

IMPORTANT INFORMATION ABOUT GROUNDING

- To provide additional protection from the risk of shock, this unit **MUST** be connected to a residual-current device (RCD) outlet at all times. Use of an extension cord will void any warranties.
- This appliance must be grounded. Improper use of the grounding plug can result in a risk of electric shock, causing serious injury and possibly death.
- This appliance is equipped with a power cord having a grounding wire with a grounding plug and must be connected into a properly-grounded, polarised outlet.
- Consult a qualified electrician if the grounding instructions are not completely understood, or if doubt exists as to whether the appliance is properly grounded. If the wall outlet is a standard, 2-prong outlet, it is your personal responsibility and obligation to have it replaced with a properly-grounded, 3-prong wall outlet.
- Do not under any circumstances cut or remove the third (ground) prong from the power cord plug. Do not use an adapter plug with this appliance.

UNPACKING THE WATER COOLER

1. After unpacking the water cooler, wipe with a soft cloth.
2. Place the machine on a hard, flat surface. Make certain the unit is level. The unit should not be close to direct sunlight or other sources of heat.
3. It is best to place the water cooler in an area with good air circulation. Make sure there is at least 10 cm of space between the back of your cooler and the wall. Keep a minimum distance of 5 cm on each side of your water cooler.

WARNING - The drain cap on the back of the unit may become loose during shipping. Fasten the drain cap tightly before you start to operate the unit. If the drain cap is loose, the unit may leak and cause floor damage.

INSTALLATION PROCEDURE

1. Make sure the water dispenser is not plugged into an electrical outlet.
2. Attach the mains water connection to the rear of the cooler.
3. Press either of the water taps down until water begins to flow then let go.
4. Insert the power plug into an electrical outlet.
5. For the cook and cold model: Switch the cold water switch to the ON position.

OPERATION

After the cooler has been connected to the water cooler, the unit is ready for use. Water will flow from the bottle into the cold reservoir, and then the unit's compressor will start to operate. The first time the water cooler is used, you will have to wait at least 45 minutes for cold water.

For the cook and cold model:

- To dispense cook (ambient) water, press the cook tap down.
- To dispense cold water, press the cold tap down.

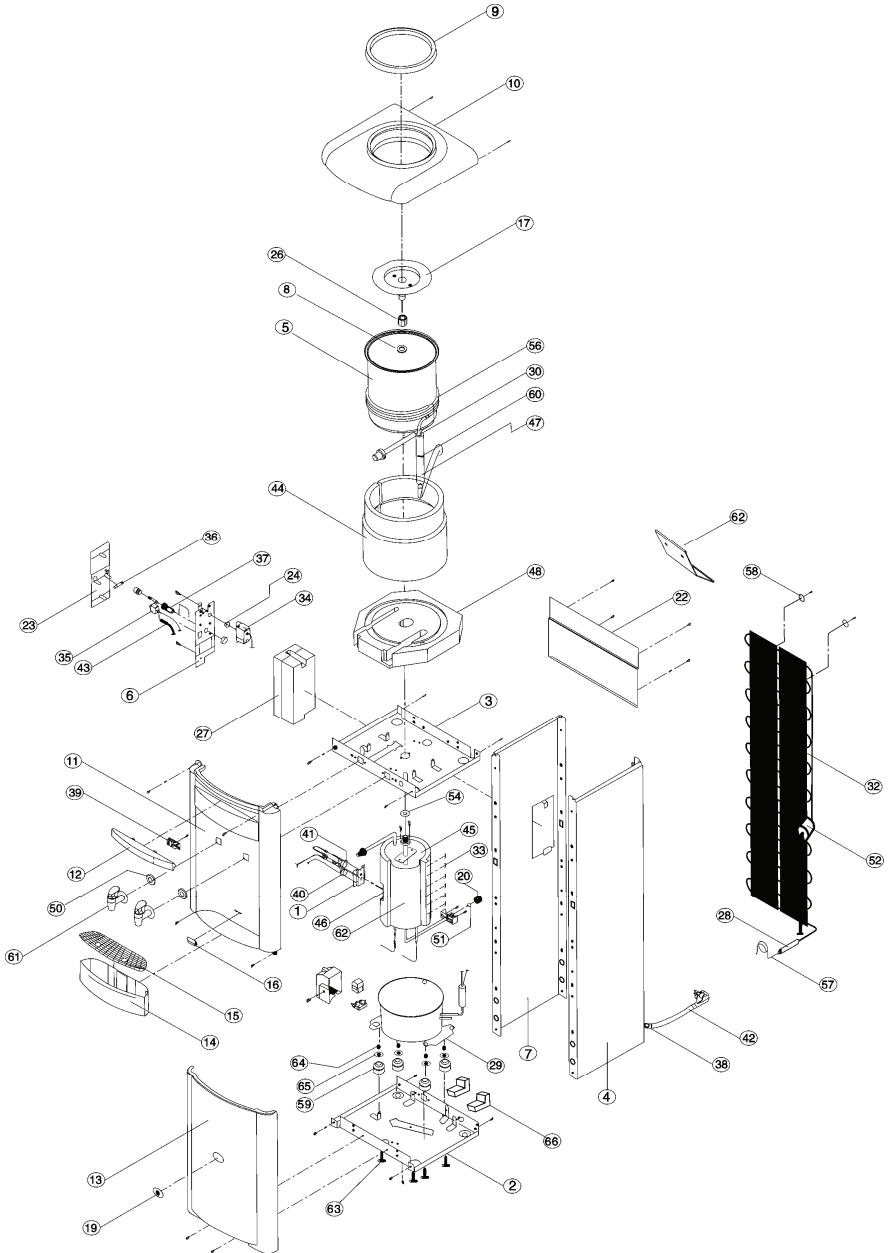
TROUBLESHOOTING

Problem	Possible Cause	Remedy
Unit does not dispense cold water.	Over consumption of cold water in a short time.	Wait for 15 minutes while the water cools and try again.
	System malfunction.	Contact Aqua Cooler service team.
	The ventilation around the unit is insufficient.	Ensure sufficient ventilation space around the unit.
	The temperature of the water in the water bottle is too high.	Ensure the unit is not placed in direct sunlight or close to other heat sources.
	The cold water switch is in the OFF position.	Switch the cold water switch to the ON position.
Unit is noisy during operation.	Cold water baffle is not set properly.	Secure the cold water baffle in the cold tank.
	The appliance is not level.	Place the unit on a level, flat surface.
Water leaks from the faucet.	Unit is touching other objects.	Ensure the unit is standing free of any surrounding objects.
	The top portion of the faucet has come loose.	Tighten the top threaded portion of the faucet.
Water is dripping out of the water cooler and onto the floor.	The faucet has been damaged.	Contact Aqua Cooler service team.
	The hose connector is not connected properly.	Make sure the hose connector is properly connected.
	The drain cap on the back is not fastened correctly.	Tighten the drain cap. If the sealing silicon material inside the drain cap is torn or damaged, then replace with a new one.
Crack or pin holes in the bottle.		Replace with a new bottle.
The water being dispensed has a strange taste.	This is not uncommon with new water coolers. Do not worry, this is not dangerous to your health.	Clean the hose in the dishwasher (top rack only) or let it soak in dish soap. The strange taste usually goes away after the first bottle has been consumed.

CLEANING AND MAINTENANCE

- Remove or disconnect power before performing any maintenance or servicing the product.
- Never use detergent or chemicals to clean the water tanks.
- If dust or other exterior substance has accumulated on the condenser, wipe off with water-soaked soft cloth.
- Do not directly spray water on the surface of the product. Wipe the front and back of the product with water-soak soft cloth.
- After cleaning the product, ensure it is completely dried before beginning use again.


EXPLODED DIAGRAM



SPARE PART LIST

#	Description	Code
1	Bi-metal bracket	SPN1
2	Compbase	SPN2
3	Base cold container	SPN3
4	Side panel (right)	SPN4
5	Cold water container	SPN5
6	Control panel	SPN6
7	Side panel (left)	SPN7
8	Supporter hot container	SPN8
9	Top cover ring	SPN9
10	Top cover	SPN10
11	Front panel (upper)	SPN11
12	Display name plate	SPN12
13	Front panel (lower)	SPN13
14	Drip tray	SPN14
15	Grid-drip tray	SPN15
16	Stopper drip tray	SPN16
17	Cold water baffle	SPN17
18	Protector side panel	SPN18
19	Lower-name plate	SPN19
20	Drain cap hot water	SPN20
21	Outlet cold water pipe	SPN21
22	Rear panel	SPN22
23	Door-control panel	SPN23
24	Knob thermostat	SPN24
25	Outlet cold water pipe nut	SPN25
26	Cold container fitting nut	SPN26
27	Box-control panel	SPN27
28	Drier	SPN28
29	Compressor	SPN29
30	Heat shrinkable tube	SPN30
31	Aluminium tape	SPN31

#	Description	Code
32	Wire condenser	SPN32
33	Staple	SPN33
34	Cold water thermostat	SPN34
35	Hot water switch	SPN35
36	Cartridge fuse	SPN36
37	Fuse holder	SPN37
38	Cord bushing	SPN38
39	Pcb display	SPN39
40	Hot controller	SPN40
41	Thermal cut out	SPN41
42	Power cord	SPN42
43	Electric wire	SPN43
44	Insulation cold container (s)	SPN44
45	Insulation hot container (u)	SPN45
46	Insulation hot container (s)	SPN46
47	Insulation suction tube	SPN47
48	Insulation cold container (l)	SPN48
49	Silicon outlet water pipe	SPN49
50	Silicon rubber faucet	SPN50
51	Silicon rubber drain cap	SPN51
52	Rubber prevent vibration	SPN52
53	Silicon inlet water pipe	SPN53
54	Safety silicon rubber	SPN54
55	Gasket cold container	SPN55
56	Evaporator copper tube	SPN56
57	Capillary tube	SPN57
58	Washer	SPN58
59	Split pin	SPN59
60	Cable tie	SPN60
61	Faucet assembly	SPN61
62	Hot water container assembly	SPN62

The background of the top half of the page is a dynamic splash of clear blue water against a light blue sky. The water is captured in mid-air, with numerous droplets and bubbles. In the center of this splash is the Aqua Cooler logo. The logo consists of a dark blue rectangular box containing the word 'AQUA' in white, bold, sans-serif capital letters. Below this box is a white rectangular box containing the word 'COOLER' in black, bold, sans-serif capital letters.

AQUA COOLER

Your Partner in Cool.

Phone Numbers

Sales: 1300 278 226
Service: 1800 278 226

Address

U14, 2-12 Knobel Court
Shailer Park QLD 4128

Internet

www.aquacooler.com.au
info@aquacooler.com.au