



MOTOCADDY®



S
DIGITAL



S
DIGITAL



Motocaddy S-Series Instruction Manual



Contents Page

S-Series Trolleys:

- Page 2 Battery Charging Instructions
 Caring for your trolley
- Page 3 Locating your Serial Number
 Attaching the Rear Wheels
 Folding & Unfolding your Trolley
- Page 4 Using the Bag Supports
 Adjusting the Bag Supports

S1 Digital Section:

- Page 5 S1 Digital Parts List
 Using the S1 Digital On/Off Switch
- Page 6 S1 Digital Troubleshooting
- Page 7 S1 Digital Troubleshooting

S3 Digital Section:

- Page 8 S3 Digital Parts List
 Using the Advanced Digital Control Panel
- Page 9 Operating the Digital Functions
 Using the USB Charging Port
- Page 10 Using Adjustable Distance Control (ADC)
 Using Competition Mode
 Using the S3 Security Features
- Page 11 S3 Digital Troubleshooting
- Page 12 S3 Digital Troubleshooting

Miscellaneous:

- Page 13 Lithium Battery Charging Instructions
- Page 14 Motocaddy S-Series Accessories



Lead Acid Battery Charging Instructions

Please read these important battery charging instructions prior to using your Motocaddy S-Series Trolley for the first time. These simple guidelines are designed to guide you through the steps required to ensure safe and long term use of the battery supplied with your cart. If you have purchased a lithium battery option, please follow the instructions contained on page 13 of this literature.

Operating Instructions:

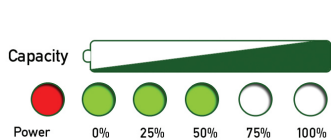
For full guidelines including tips for prolonging battery life, please refer to the charging instruction booklet enclosed with your trolley. It is important that you read the full charging information to ensure safe use of your battery and charger.

Please ensure that only batteries supplied by Motocaddy are charged with this equipment. Cyclic battery chargers are designed and specified in accordance with the battery manufacturers requirements. The charger should only be connected to an earthed socket outlet and charging should only take place on a dry non-carpeted, non-flammable hard surface. Please ensure that the battery, charger and cables are in good condition and the terminals are securely connected.

1. Always disconnect and remove the battery from the trolley whilst charging.
2. Plug the charger into a power socket and attach the battery cable to the charger, matching the red and black connections.
3. The red power indicator will illuminate to indicate that the charger is connected to a power supply. If the light does not turn red, there may be a problem with your charger or power supply. If you suspect that the charger is not working, please contact Motocaddy before attempting re-charging again. .
4. The green LED charging lights will illuminate in sequence during the charging cycle. If they fail to do so then your battery may not be reaching full capacity and will need further investigation. If this appears to be the case, please do not continually charge your battery in this state as this could damage both the battery and the charger.
5. Once charging is complete please disconnect the charger from the mains power supply and the battery. Never leave the charger connected whilst not on charge.

NB : Never charge the battery outside or in conditions that may allow moisture to penetrate the charger or connections. If the battery is not used for prolonged periods of time, please charge your battery at regular intervals. Please do not leave it on charge or connected to the charger. The battery should be charged for at least 8 hours before using it for the first time.

LED Indicator:



The charging indicator will accurately show the charged capacity of the battery during the charging phase. The red LED illuminates when the charger is connected to a power supply and each of the five green LED lights will illuminate in turn as soon as the next charging stage is reached.

When the battery reaches the fully charged state, each of the green LED lights will flash to show that it is ready to be disconnected. The charger will enter the trickle charge mode at this stage and it is recommended you unplug your battery and disconnect your charger rather than leave it connected continuously when fully charged.

Caring for your Trolley:

Although your S-Series Trolley has been weatherproofed, please follow these simple guidelines and warnings to protect your trolley:

- Do not store your trolley outside.
- Try to minimise exposure to rain as much as possible with an umbrella during heavy rainfall.
- Submerging the cart in water (eg a lake) is likely to cause damage to the circuit board.
- Wipe water droplets from the screen prior to storage.
- Never use a pressure washer to clean your cart. To prevent water damage, wipe it down with a damp cloth.



Locating your trolley Serial Number

The serial number for your Motocaddy trolley is located on the underside of the battery tray frame. This number is required when returning your warranty card to register your cart and should be kept handy for future use.

The same number should also be on the box you received with your trolley. Please ensure you keep hold of the box in case you need to return your trolley for any reason. A proof of purchase must also be kept in case your trolley requires parts during its warranty period.

Attaching the Wheels

There is a left and a right wheel and it is important that you don't put them on the wrong way round, otherwise the trolley will not move! You will find the "L" and "R" labels on the inside of the wheel on the central hub. To attach the wheels, push the release button across and then slide the wheel on as far as it will go so it slots onto the inner groove on the axle. Once in place, release the button and pull the wheel outwards slightly to lock in place. You will hear a small click. The outer groove can be used as a "free-wheel" option if you run out of battery power during a round of golf.

IMPORTANT: To check you have attached the wheels correctly onto the inner groove, you will find they will only rotate freely in one direction.



Unfolding your Trolley

- Step 1: Pull the clip to release the locking system (fig. 1)
- Step 2: Raise the wishbone to the vertical position (fig. 2)
- Step 3: Hook the lower part of the frame into the clip (fig. 3)
- Step 4: Simply unfold the upper part of the frame then pull the clip again to lock the upper frame in place (fig. 4)



Fig 1

Folding your Trolley

Simply pull the clip and fold the main frame in half, then fold the wishbone part down and pull the clip to lock in place, ready to be lifted into your car boot.

(Make sure you don't have bag straps or battery straps in the way, otherwise the cart will not fold up properly).



Fig 2



Fig 3



Fig 4

Using the Upper & Lower Bag Supports

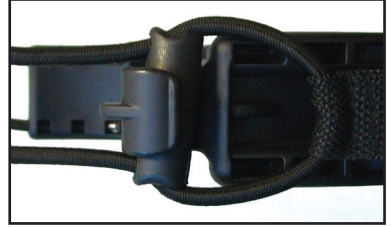
Fig 1



Fig 2



Fig 3



The upper and lower bag supports on the S-Series carts are designed to hold your bag securely whilst allowing simple adjustment to incorporate differing bag sizes. To secure your bag, follow figure 1, 2 and 3 above.

1. Position the two placement straps either side of your cart bag handle as shown in figure 1.
2. Stretch the elasticated strap around the bag and loop the rounded bar underneath the housing hook as shown in figure 2.
3. The attached strap should be as shown in figure 3.

The same steps can be followed for the upper and lower bag supports.

Adjusting the Bag Supports

The bag support straps are manufactured from elasticated material to allow your golf bag to be held in place tightly. The strap should be adjusted to be reasonably tight around the golf bag.

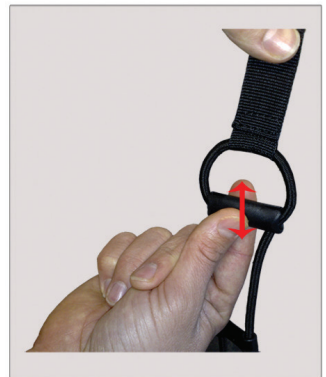
To adjust the bag supports to hold your bag snugly in place prior to use of your trolley, unclip the elasticated straps from the housing (figure 4) and then pull the straps outwards in the direction shown by the arrows.

Then move the bar as required to either tighten or loosen the strap fitting. Pulling the bar downwards will tighten, whilst pushing it upwards will loosen the supporting straps.

Fig 4



Fig 5





S1 Digital Parts List

1. Digital Control Panel
2. Upper Bag Support
3. Central Folding System
4. Folding Release Clip
5. Rear Wheels
6. Lower Bag Support
7. Battery
8. Battery Tray
9. Motor
10. Front Wheel
11. Battery Connector



Using the on/off & speed control

The S1 Digital is extremely simple to control. The red button is used to turn the trolley on and off, whilst also controlling the speed of the trolley. The speed can be adjusted while the trolley is stationary or in motion. The trolley has 9 speed settings (1 to 9) with 1 being the slowest setting and 9 the fastest. To increase the speed rotate the speed dial clockwise, or anti-clockwise to decrease the speed.

To start the trolley, simply select your required speed setting and press the button. The trolley will smoothly accelerate until it reaches the selected speed. To stop the trolley, simply press the button again - there is no need to reduce the speed setting.

There are two indicating LEDs below the speed display. The right hand one displays the battery capacity (green, amber & red). The left hand LED is illuminated when the power is on.



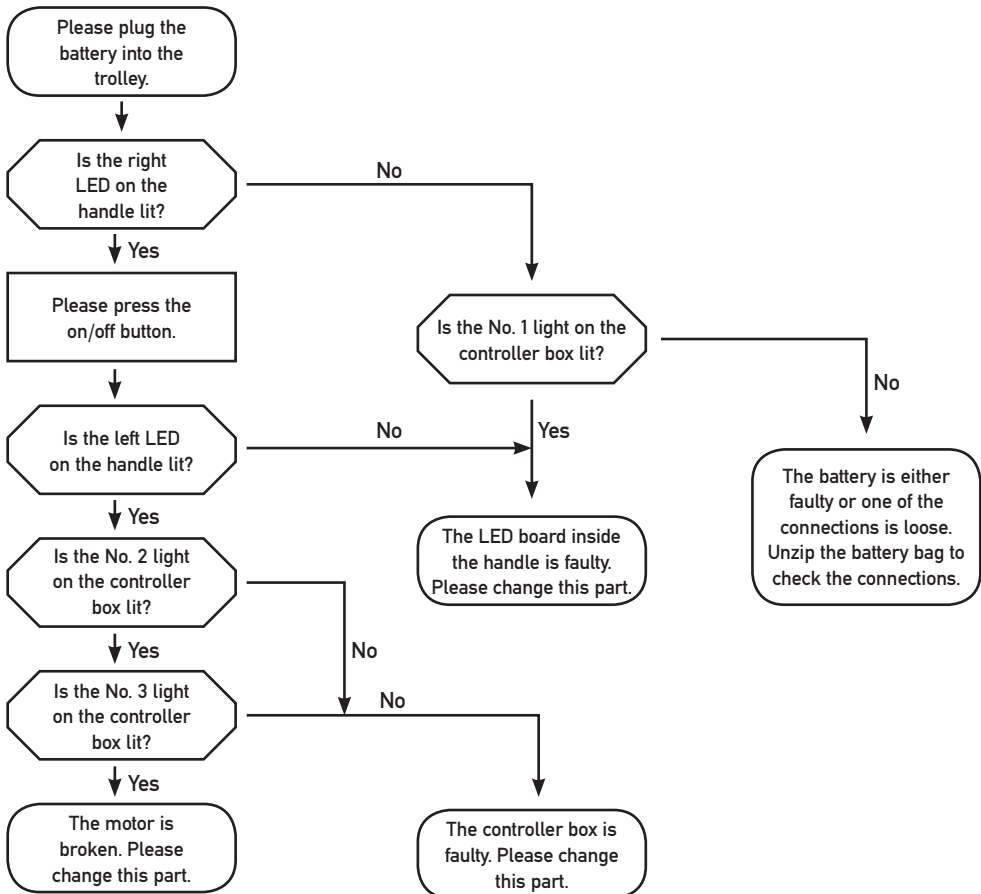


S1 Digital Troubleshooting

In the unlikely event that your cart develops a fault, you can be confident that your S1 Digital has been designed with an easy diagnosis system and incredibly simple parts to change. Should your trolley stop working, please follow the easy to use diagnosis diagrams below. It is recommended that you place your trolley in the folded position and remove the wheels to enable easy handling.

Where indicated below, the lights on the controller box are numbered as described throughout the troubleshooting. All parts can be ordered online at www.motocaddy.com or by ringing 0845 058 9818.

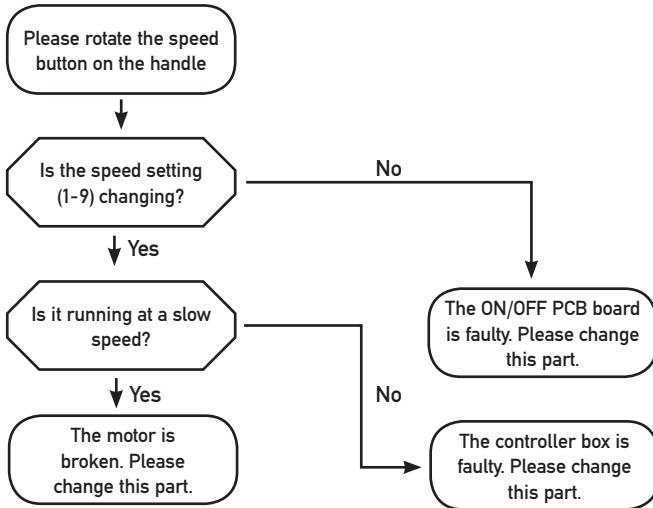
1) The trolley does not move:





Further Troubleshooting

2) The trolley only goes one speed:



1. The cart will not complete 18 holes after a full charge:

The battery supplied with your S1 will very comfortably complete 18 holes. Please be aware that if you leave the battery sitting around for lengthy periods without charging it, you will seriously reduce its capacity. You must charge your battery within 24 hours of using it to maintain its capacity.

Please order a new battery from Motocaddy.

Adjusting the front wheel

In the unlikely event that your trolley is not tracking in a straight line, the alignment of the front wheel can be adjusted to rectify the fault. This problem can be caused by a number of factors including a slightly loose bag support or an unevenly packed golf bag. Should you wish to alter the alignment of the front wheel, follow these simple steps:

1. Lift the lever positioned on the front wheel housing.
2. Adjust the two small metal gear wheels on either side of the housing to realign the wheel.
3. Push down the lever to lock the wheel back in place.

This procedure can be carried out until you are happy the trolley is moving in a straight line.

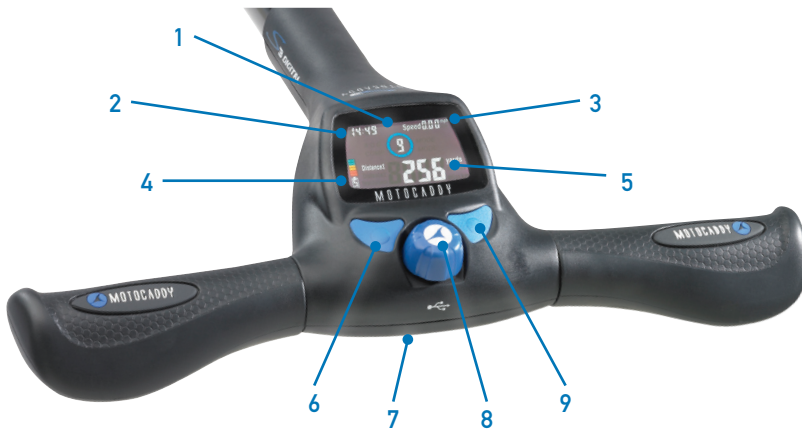


S3 Digital Parts List

1. Digital Control Panel
2. Upper Bag Support
3. Central Folding System
4. Folding Release Clip
5. Rear Wheels
6. Lower Bag Support
7. Battery
8. Battery Tray
9. Motor
10. Front Wheel
11. Battery Connector
12. USB Charging Port



The Advanced Digital Control Panel



- | | |
|----------------------|------------------------------|
| 1. Speed Setting | 6. Button A |
| 2. Time | 7. USB Charging Port |
| 3. Speed Measurement | 8. Speed Controller & On/Off |
| 4. Battery Meter | 9. Button B |
| 5. Distance Reading | |



Operating the Digital Functions

To activate the control panel you need to connect the battery to the cart. When the display activates, the speed setting number located within the blue circle will indicate the speed the trolley will set off at once started. The solid blue circle will rotate when moving.

Setting the Time:

Hold in button B for three seconds until the "minutes" start flashing. Set the minutes by pressing button A, each press will increase the time by one minute. Then toggle to the hour by pressing button B again. Set the hour in the same way as you did the minutes. Once the time is correct, hold in button B for three seconds to set it.

Starting and stopping the cart and changing the speed:

Before you move off, twist the central button with your thumb in a clockwise direction to increase the speed setting. You will see the number in the blue circle increase accordingly. The settings run from 1 (slowest) to 9 (fastest). We recommend using setting 3 for the first time. To start the cart, simply press the button. To stop it, press the button again - there is no need to twist the speed dial back to zero as it is designed to smoothly accelerate back to the required speed. You will notice the blue circle rotates when you press the button. After a couple of seconds, the speed the cart is travelling at will be displayed in the top right part of the screen. You can toggle between mph and kph at any time by pressing Button B.

Distance Readouts:

There are three different distance readouts - "Distance 1", "Distance 2" and "Total Distance". You can toggle through them at any time by pressing Button A. We recommend using "Distance 1" to measure your drives or particular shots during your round. To reset the reading, press and hold in Button A for three seconds until the reading shows "0". Please note you can only reset the reading when the cart is switched off (stationary). To get an accurate reading you need to turn on your cart and walk directly to your golf ball. We appreciate that you will not always be able to walk directly to your golf ball - however when you can it's great fun to see how far you've hit it and our system measures with incredible accuracy. You can see the reading in yards or meters by toggling with Button B at any time. Please note the cart only measures when it is switched on (i.e. if you push the cart along when it is switched off the distance readings will not increase). The measurements are taken from the revolutions of the axle, so please be aware that if you let your cart run off down a hill on its own the readings will not be 100% accurate. We recommend you always walk within a few steps of your cart and do not let it run off ahead of you.

We recommend using "Distance 2" to measure your approach shots. For example you could align your S3 with the 150 yard marker and accurately measure how far past it your ball is. Similarly to Distance 1, holding down button A for 3 seconds will reset the distance at any time. Please note if you unplug the battery, "Distance 1" and "Distance 2" will be reset.

"Total Distance" cannot be reset, even if you unplug the battery. This shows how far the cart has travelled in its lifetime. You can toggle to it by pressing Button A as above. This reading is displayed in miles or km. Toggle between miles or km by pressing Button B.

How to use the USB charging port:

Your brand new S3 Digital has a unique USB port to allow you to charge a GPS device (or any other USB chargeable unit) whilst on the course. To use this feature, simply remove the covering cap and plug your USB cable (not supplied) into the USB port located on the underside of the handle. The device will then continue charging for the duration of time that the cable is attached and the trolley is in use.

It is important to note that the speed of charge will be lower than that of a mains AC charger and similar to plugging the device into a PC.

The USB charger takes power from the main trolley battery and continuous charging will reduce the battery capacity between charges. It is also designed to disable itself when the trolley battery capacity reaches a preset level to prolong trolley battery life.



How to use the Adjustable Distance Control

1. Whilst stationary, hold down the central 'on/off' button for a couple of seconds.
2. The speed setting display will change to indicate '05' (5 yards or metres) and the word 'ADC' will appear.
3. Turn the button clockwise to increase the distance and anti-clockwise to decrease accordingly.
4. Press the button down once to set the trolley off in motion the required distance.
5. The distance will count down in increments of 1 yard or metre until the destination distance is reached. The trolley can be stopped at any stage by pressing the central button down once.



How to use the Competition Mode

It is also possible to temporarily disable the distance measuring functions should competition rules dictate. It is recommended that you always check competition rules before using your Motocaddy S3 with distance readings enabled.

1. Whilst stationary, hold down the left and right blue distance buttons (A & B) for three seconds. It is easier to hold the left first and whilst continuing to do so, hold down the right hand one.
2. The distance readings will be removed from the screen and the words 'COMP MODE' will appear.
3. To return your trolley to normal mode, simply perform the procedure indicated in step 1 once more.



How to set the security Pin code

The S3 Digital also comes with the option of enabling a security feature to make the trolley unusable for potential thieves. There is no pin-code set when the trolley is manufactured but this can be set using the steps below:

1. Plug in the battery connector whilst holding 'Button A', then let go of the button.
2. Use the 'On/Off' button (Figure 1) to choose the first number of your pin code (0-9). Turn clockwise to increase the number or anti-clockwise to decrease.
3. Press 'Button B' to confirm your choice.
4. Repeat step 2 and 3 for each of the four digits.
5. The blue circle will illuminate (Figure 2) to indicate a valid pin number has been entered.



To change your pin, follow steps 1 to 5 again. You will be required to enter your current pin number first followed by the number you wish to change it to.

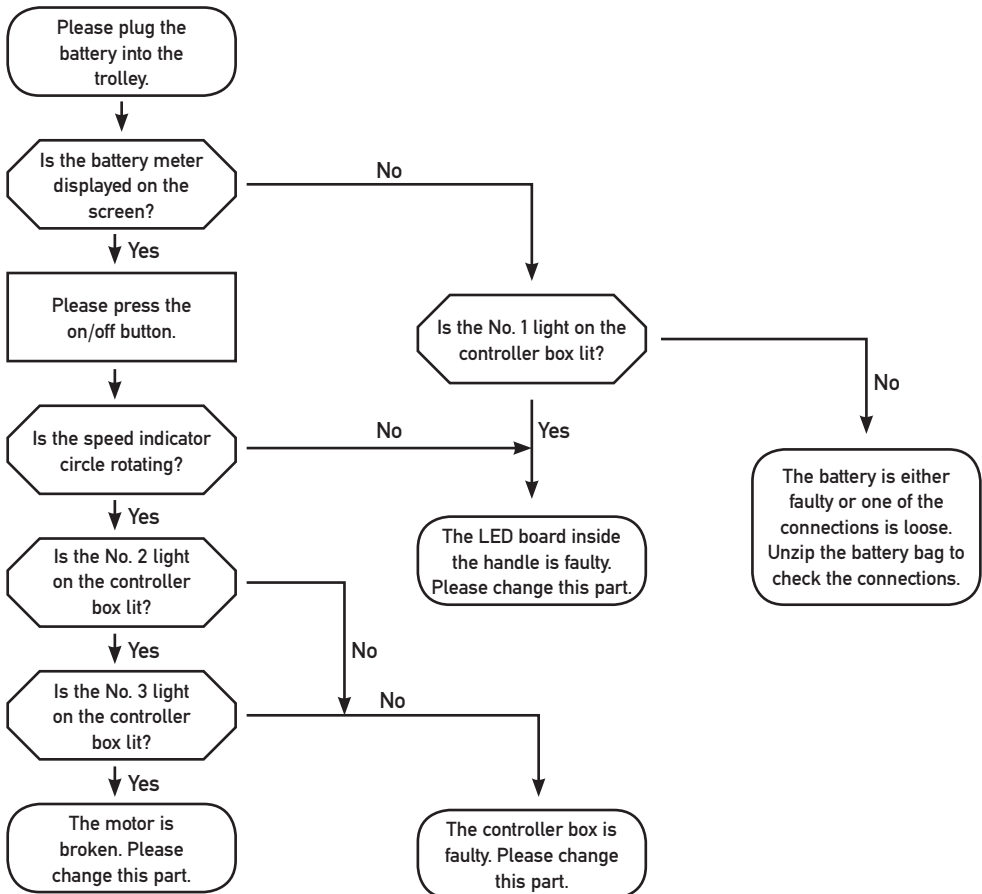
To disable the security feature, follow the normal procedure for changing your pin and select four zeros as the new code. This will return it to it's factory setting.

S3 Digital Troubleshooting

In the unlikely event that your cart develops a fault, you can be confident that your S3 Digital has been designed with an easy diagnosis system and incredibly simple parts to change. Should your trolley stop working, please follow the easy to use diagnosis diagrams below. It is recommended that you place your trolley in the folded position and remove the wheels to enable easy handling.

Where indicated below, the lights on the controller box are numbered as described throughout the troubleshooting. All parts can be ordered online at www.motocaddy.com or by ringing 0845 058 9818.

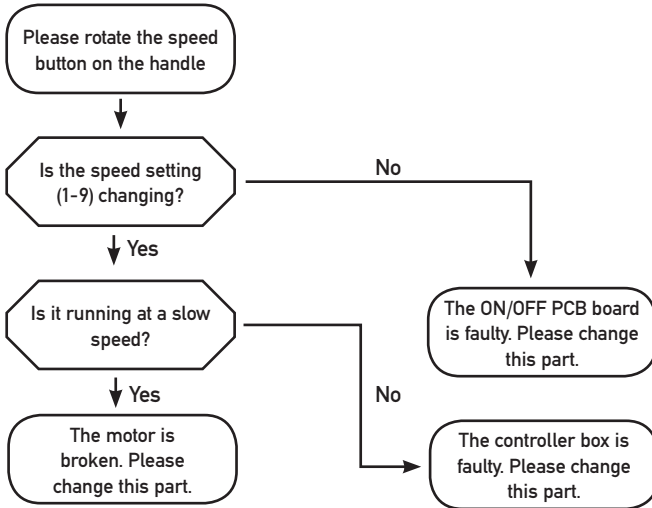
1) The trolley does not move:





Further Troubleshooting

2) The trolley only goes one speed:



1. The clock keeps resetting every time I use the cart:

The battery inside the handle is probably flat. Open the handle carefully by undoing the screws on the handles, then pull them off. Remove the rest of the screws and gently prise the upper and lower parts of the handle apart. The battery can be removed by gently moving the retaining clip to the left. A new one clips in very simply by pressing it home. When you put the handle back together be very careful not to screw through any wires.

2. The cart will not complete 18 holes after a full charge:

The battery supplied with your S3 will very comfortably complete 18 holes. Please be aware that if you leave the battery sitting around for lengthy periods without charging it, you will seriously reduce its capacity. You must charge your battery within 24 hours of using it to maintain its capacity. Please order a new battery from Motocaddy.

Adjusting the front wheel

In the unlikely event that your trolley is not tracking in a straight line, the alignment of the front wheel can be adjusted to rectify the fault. This problem can be caused by a number of factors including a slightly loose bag support or an unevenly packed golf bag. Should you wish to alter the alignment of the front wheel, follow these simple steps:

1. Lift the lever positioned on the front wheel housing.
2. Adjust the two small metal gear wheels on either side of the housing to realign the wheel.
3. Push down the lever to lock the wheel back in place.

This procedure can be carried out until you are happy the trolley is moving in a straight line.



Lithium Battery Charging Instructions (where applicable)

Customers who have purchased a Motocaddy trolley with a lithium battery should follow the charging instructions listed below rather than the standard charging instructions at the front of this literature.

If you have purchased a Motocaddy S3, the battery meter on the digital display is set to measure capacity of the standard battery as default. To enable accurate measurement of lithium battery capacity, please follow the procedure below:

1. Hold the left hand blue button while plugging in the battery and release the button when the screen turns on.
2. Use the left hand button to toggle between "S" (Standard / Extended Range Battery) and "L" (Lithium Battery).
3. Unplug the battery and leave for five seconds before reconnecting the battery ready for use.

Important Charging Advice

- Please ensure that the battery is always recharged after each use.
- The battery must be stored on a dry non-carpeted place and charged at temperatures ranging between 10°C and 30°C. Charging above or below these temperatures is not recommended as it can reduce battery capacity.
- This charger MUST NOT be used to charge any other battery and is designed for use with Motocaddy Lithium batteries only.
- The Lithium battery charger should only be opened and maintained by authorised personnel. Unauthorised opening will void your warranty.
- The battery should be disconnected from the charger as soon as possible after charging and should not be left on charge for longer than necessary.

Charging Procedure

1. Unplug your lithium battery from your trolley - this should always be done when folded to avoid damage to the battery and/or trolley.
2. Connect the battery to the charger via the two way plug. Ensure that the black connection goes to black and blue goes to blue.
3. Plug the charger into your mains supply.
4. When the charging led indicator has turned green, the battery is fully charged and ready to be used.
5. The charging process will take between 3 to 5 hours depending on the depth of discharge.

LED RED = ● Battery Charging. LED GREEN = ● Battery Fully Charged and ready to be disconnected.

Recommendations for the Hibernation of Lithium Batteries during Winter Months

If for any reason your lithium battery is not going to be used for lengthy periods, e.g. 3 months over the winter, it is advised to store the battery half charged. To do this simply use the battery for a round of golf as usual and charge it for 1.5 hours at the end of the round. Before the battery is used again, recharge it (top it up) prior to use. We recognise that extended absences are not always planned in advance, however when it is likely that you will not be using your battery for a period of time it is good practice to follow these steps to extend the life of your lithium battery.

Please ensure that the charger is ALWAYS disconnected from the battery after charging.

Battery Management System (BMS)

Motocaddy Lithium Batteries are fitted with a comprehensive battery management system (BMS) to protect the battery from excessive abuse, high currents, deep discharge and overcharge. When the battery is delivered there may be no output as the BMS is designed to maximize safety whilst shipping. Please ensure that the battery is fully charged prior to connecting it to your Motocaddy as this will activate the BMS and effectively "switch-on" the battery. From time to time, at deep discharge or long term storage the BMS may switch-off the battery. A full battery charge will rectify this problem.

Motocaddy golf trolleys are designed to work with the BMS system installed in the Lithium batteries and the voltage meter is also synchronised to work in conjunction with the battery. If for any reason the voltage on the battery reaches that below the low battery warning on the Motocaddy Trolley then the BMS on the battery may switch-off the battery to protect it. Again if this occurs please recharge the battery fully.

Please be aware that Lithium batteries tend to "drop off" quickly at the end of the cycle so it is not advisable to attempt to play excessive holes from a battery as the BMS will activate for protection purposes. Please remember if the trolley warns you that the battery is getting low then be prepared to push the trolley home if it is ignored!



MOTOCADDY®



The S-Series Accessory Range from Motocaddy.



Travel Cover



Wheel Covers



Auto-Open Umbrella



Rain Cover



Deluxe Seat



Tri-Fold Towel



Caddy Rack



Winter Wheels

The **ALL NEW** PRO-SERIES Cart Bag Range from Motocaddy.



Black/Blue



Alpine/Blue



Black/Red



Alpine/Red



Alpine/Pink



Alpine/Sky

For further information about our full range of Motocaddy Cart Bags and Accessories, visit www.motocaddy.com



The **REVOLUTIONARY** New S-Series Accessory Range.
Up to four accessories on your Motocaddy at the same time!



Umbrella Holder



Scorecard Holder



Drinks Holder



Device Holder



Accessory Station

Introducing our redesigned range of Accessories...

We have redesigned three of our most popular accessories – the umbrella holder, scorecard holder and drinks holder, plus we've introduced a device holder to our range which is designed to hold GPS devices, PDA's and mobile phones. Thanks to our innovative Accessory Station, all of these accessories can be fitted to a Motocaddy trolley at the same time!

Motocaddy Ltd, Units 15-18, Stansted Distribution Centre,
 Start Hill, Great Hallingbury, Hertfordshire, CM22 7DG