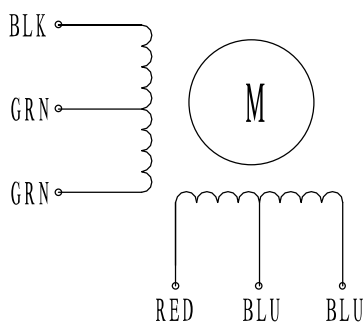


HIGH TORQUE HYBRID STEPPING MOTOR SPECIFICATIONS

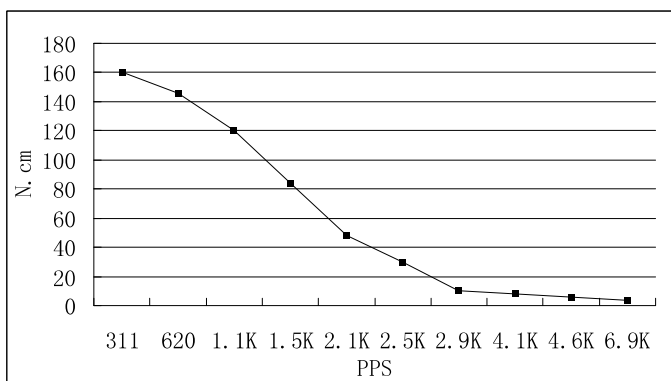
General specifications		Electrical specifications	
Step Angle (°)	1.8	Rated Voltage (V)	4.5
Temperature Rise (°C)	80 Max (rated current, 2 phase on)	Rated Current (A)	2.0
Ambient Temperature (°C)	-20~+50	Resistance Per Phase ($\pm 10\%$ Ω)	2.25 (25°C)
Number of Phase	2	Inductance Per Phase ($\pm 20\%$ mH)	3.6
Insulation Resistance (M Ω)	100 Min (500VDC)	Holding Torque (N.cm)	135
Insulation Class	Class B		
Max.radial force (N)	28 (20mm from the flange)		
Max.axial force (N)	10		

● Wiring Diagram :

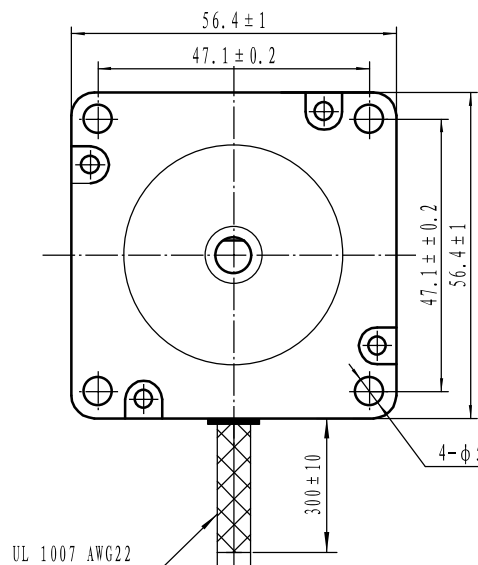
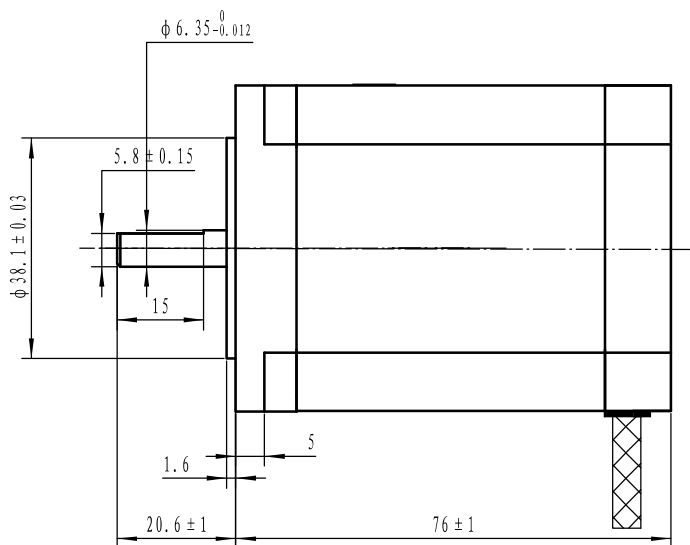


● Pull out torque curve :

VOLTAGE: 40VAC, CONSTANT CURRENT: 2.0A, HALF STEP



● Dimensions:
(unit=mm)



					SY57STH76-2006A	TECHNICAL CONDITIONS
REV	REVISIONS	DESCRIPTION	BY	DATE		
DRAW	2013/06/12					