

Particle Metallurgy Steels have significantly improved wear characteristics over standard nitrided steels in high-wear applications.

Particle Metallurgy Steels are through-hardened and wear characteristics do not degrade as the surface is eroded.

Construction Material Selection:

Standard H13 Nitrided

Long-lasting screw tip manufactured from premium quality H13 tool steel that is vacuum hardened, double tempered and maximum nitrided for longer life. Generally inter-changeable with other OEM parts, these screw tips are manufactured in batch quantities to reduce the price on modern automated CNC lathes and machining centres. Repeat accuracy and precision manufacturing. Also available in through-hardened D2 Tool Steel

HF600 (CPM9V)

Our HF600 powder metallurgy steel offers unrivalled protection from abrasive situations such as high glass fill or processing of polycarbonates/abrasive plastics and even ferrous moulding. Many years of experience and research result in the best screw tip for wear resistance in the industry. ALL PARTS are made from HF600 with NO sacrifice to quality.

HF800 (CPM14V)

The ultimate screw tip assembly, made from both abrasion and corrosion resistant powder metallurgy, through hardened steel, containing the maximum possible amount of vanadium and chrome carbides within the steel matrix to give all round universal wear protection, particularly appropriate for glass filled materials containing flame retardants or where incorrect screw profiles are creating excessive heat and acidic gas build-up. Offers high wear protection throughout the screw tip. Long term replacement tip savings can be enormous.

Stellite

Retainer with extra hard Stellite G1 insert pads welded to the base of the flights. Available in standard or freeflow designs. Nitrided and through hardened for all over protection. Offers wear resistance where it is needed to prolong retainer life. Check Ring and Pad: made from vacuum hardened, double tempered, maximum nitrided tool steel or wear-resistant Particle metallurgy Steel.

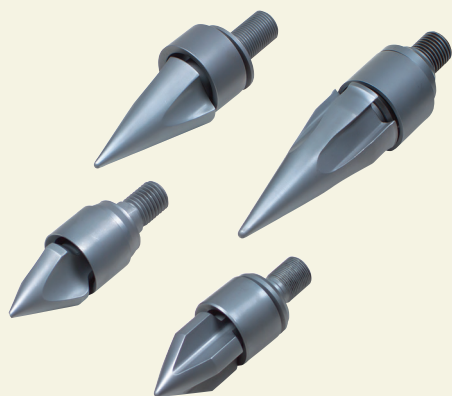
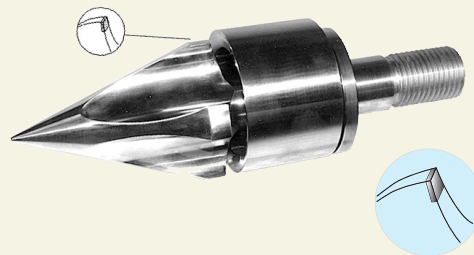
Stellite Tip Screwtip

The Ultimate solution for high wear applications.

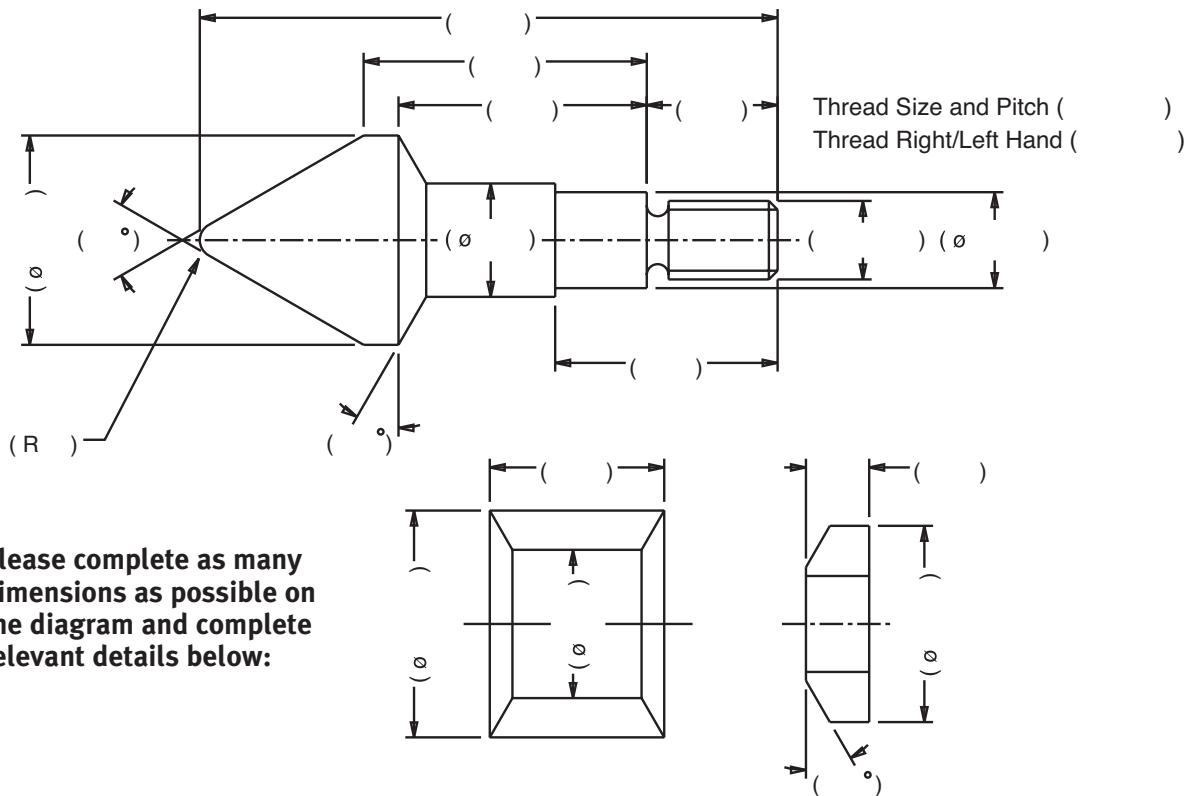
We offer the Ultimate screw-tip which is engineered of high performance materials, with particular attention focussed on areas of high wear:

ScrewTip (Retainer): The load-bearing flutes are engineered with ultra-hard Stellite insert pads which provide hardness of up to 62r/c and greatly enhance the working life of the screwtip. Further, the long-life characteristics of these inserts permits a reduction in load-bearing surface size, increasing flute size and improved flow characteristics.

Check Ring & Seat: Manufactured either from hardened and Nitrided H13 tool steel, or optionally from Particle Metallurgy CPM9V steel; very high Chromium & Vanadium composition, providing exceptionally high wear resistance & toughness. Allows very high polish & excellent free-flow characteristics. Seat (not body) is wear part, reducing maintenance & replacement costs.



Screwtip Order Form (please copy and fax to 01536 202196)

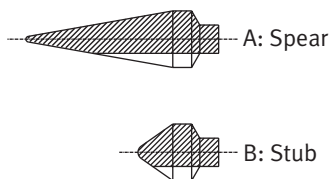


Machine Make & Model..... Quantity required.....

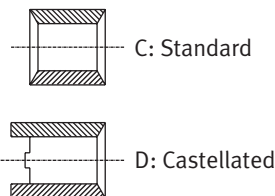
Diameter..... Thread dia/Pitch L/R hand

Other Considerations

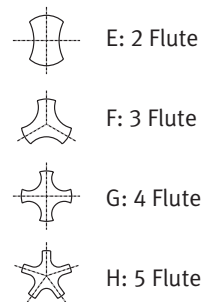
Spear/Stub



Check ring style



Flute design



Customer Information

Company Name

Contact

Phone No

Fax No

E-mail

Signed Date..... Time