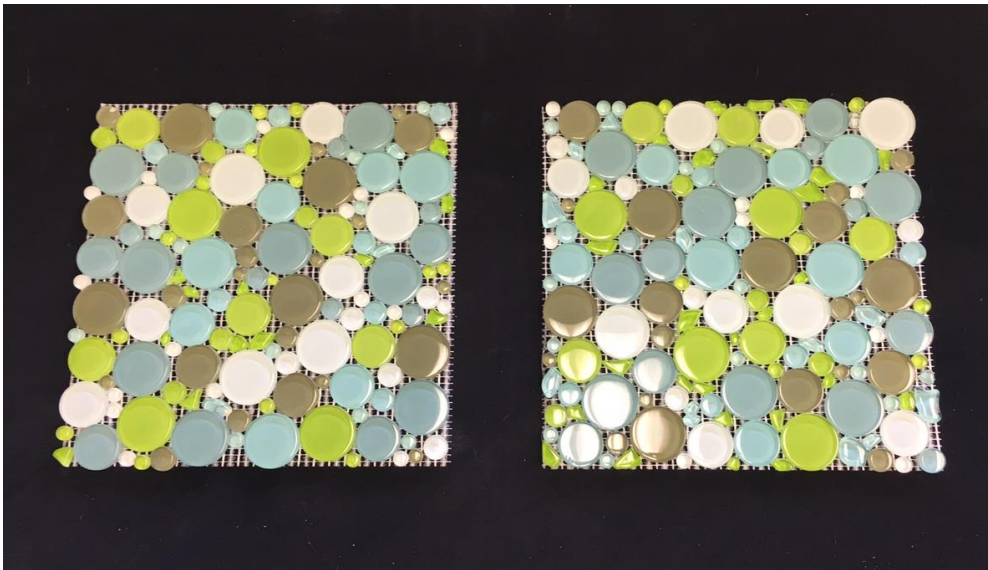
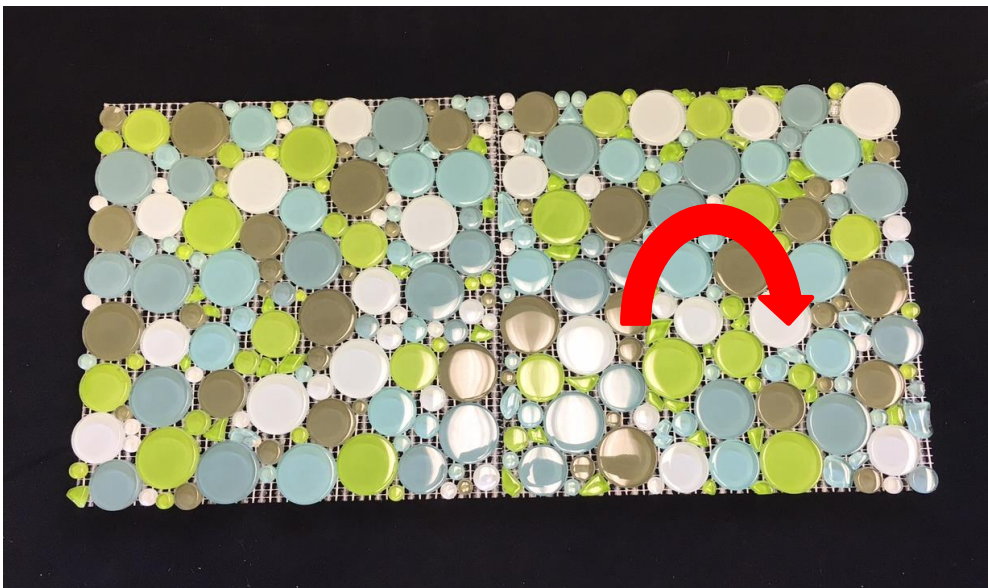


## “Burst” Installation Guide Glass Mosaic

1. Align the 12” x 12” sheet side by side.



2. For minimal gaps, rotate the sheets accordingly for best fit. There will be visible gaps.



## “Burst” Installation Guide Glass Mosaic

3. From an extra sheet, carefully remove the smaller glass pieces. These pieces will be used to fill in the gaps.



4. Fill the leftover gaps using the loose pieces; repeat process. Surplus of 10% is recommended.

