

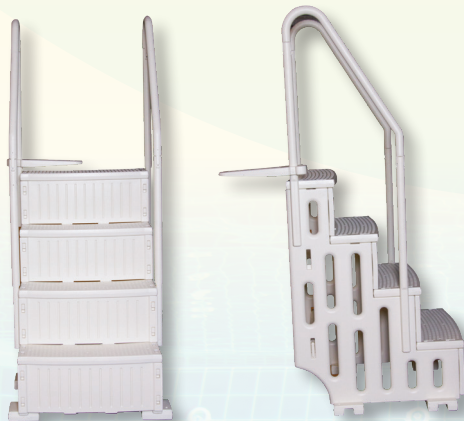


## Spacesaver Step

- Designed for inground pools or pools with a decked surround
- Large stainless steel hand rails make getting in and out of your pool easy
- Creates an island where you can sit and relax
- Heavy duty moulding supports users up to 140kg
- Stainless steel deck mount included.

300300

Weight Limit	Steps	Height	Width	Depth into pool
140kgs	4	1080	1100	1240

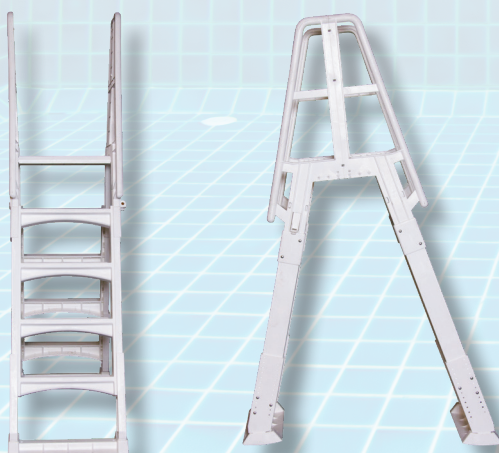


## Narrow Step

- All plastic
- Narrow frame: allows for more space in pool
- Supports users up to 180kg

300100

Weight Limit	Steps	Height	Width	Depth into pool
180kgs	4	1180mm	700mm	850mm



## A-Frame Ladder

- Plastic Frame
- Height adjustable legs ensure a level entry into the pool
- Lockable entry stairs stop unauthorised access to your pool
- Extra high handles provide comfortable and stable access
- Strong structural construction supports users up to 120kg

200330

Weight Limit	Steps	Height	Width	Depth into pool
120kgs	6	1200-1400	560	700



## In-deck Ladder

- Extra high, extra strong stainless steel climb rails allow stable hand placement and more support
- Adjusts to virtually any pool or deck height
- Supports users up to 110kg
- Easily secured to deck
- Plastic deck mount included

200310

Weight Limit	Steps	Height	Width	Depth into pool
110kgs	4	1340	440	N/A



## Stainless Steel Deck Ladder

- These ladders offer rigid stability and are a stylish design for both commercial and residential pools.
- Rests against the side of the pool
- Rubber feet included and deck anchor kit included

LDSK003

Weight Limit	Steps	Height	Width	Depth into pool
100kgs	3	800mm	450mm	N/A



Sterni's  
POOLS

[www.sternspools.com.au](http://www.sternspools.com.au)