

HAUS

DENTAL DESIGN & MILLING CENTER

2024-2025 CATALOGUE



ABOUT US



Founded by dental technicians in North Texas in 2017, Haus Dental Design & Milling Center started with a vision of providing services nationwide and overseas. By combining our extensive knowledge and experience in CAD/CAM digital production along with traditional dental laboratory technology, we lead the ever-changing dental industry.

Our high-tech milling center works with the latest products, service technique and a knowledgeable team of technicians and administrative staff. Haus Dental Design & Milling Center offers a full array of hybrid custom restoration solutions to meet the most stringent demands of dental labs while utilizing elite zirconia, lithium disilicate and metal alloy dental materials. Our digital workflow is set up to accept all major intraoral and laboratory scans, as well as traditional impressions and models.

All production is achieved in-house from designing to finishing that allows us to offer faster turnaround times, higher accuracy and consistent results. Most importantly, we are passionate about satisfying our clients with our commitment of providing quality products and services. Our goal is to make your business thrive with us and we look forward to working with you. Please feel free to contact us with any inquiries and let us start improving your business today!



TABLE OF CONTENTS

04 TURNAROUND TIME &
CUT-OFF TIME

06 HAUS ZIRCONIA DISC

08 ZIRCONIA DISC &
BRAND COMPARISON

10 FULL CROWNS

12 COPINGS

14 CUT-BACK CROWNS

16 IMPLANT CROWNS

18 CUSTOM ABUTMENTS &
IMPLANT SYSTEMS

22 FULL ARCH PROSTHESIS

26 DIGITAL DENTURES

28 DIGITAL MODEL &
NIGHT GUARD

29 DIGITAL SERVICES &
E-GIFT CARD

30 DENTAL SUPPLIES

33 HAUS DIGITAL SUPPORT

TURNAROUND TIME

- Lab days** Monday - Friday (Holidays excluded)
- Stain and Glaze** Requires 1 additional day. Full Arch Prosthesis requires
- Cases over 5 units** Require 2 additional days.
- Fuse and Finish** Requires 1 additional day.

	1	2	3	4	5	6	7
	HAUS DAY	HAUS DAY	HAUS DAY	HAUS DAY	HAUS DAY	HAUS DAY	HAUS DAY
FULL CROWNS	Desiged STL	Lab Scan	Model / IOS		Impression		
COPING / ANATOMICAL COPINGS	Desiged STL	Lab Scan	Model / IOS		Impression		
CUT-BACK CROWNS	Desiged STL	Lab Scan	Model / IOS		Impression		
IMPLANT CROWNS	Desiged STL			Model / IOS	Impression		
CUSTOM ABUTMENTS +IMPLANT CROWNS			Desiged STL			Model / IOS	Impression
CUSTOM ABUTMENTS		Desiged STL	Lab Scan	Model / IOS	Impression		
IMPLANT BARS			Desiged STL			Model	
FULL ARCH PROSTHESIS / I-BAR				Desiged STL		Model	
DIGITAL MODEL PRINTING		Desiged STL	Lab Scan	IOS			
DIGITAL MILLED DENTURE	Desiged STL		Lab Scan	Model / IOS		Impression	
DIGITAL PRINTED DENTURE		Desiged STL	Lab Scan	Model / IOS		Impression	
DIGITAL PRINTED NIGHT GUARD		Desiged STL	Lab Scan	Model / IOS		Impression	

CUT-OFF TIME	SUBMISSION CUT-OFF TIME	IF SUBMITTED BY CUT-OFF TIME	IF SUBMITTED AFTER CUT-OFF TIME
ONLINE ORDERS	3 PM CT	PROCESS ON THE SAME DAY	PROCESS ON NEXT BUSINESS DAY
DESIGNED STL FILE UPLOADS	3 PM CT	PROCESS ON THE SAME DAY	PROCESS ON NEXT BUSINESS DAY
MODEL, IMPRESSION SHIPMENT ARRIVALS	11 AM CT	PROCESS ON THE SAME DAY	PROCESS ON NEXT BUSINESS DAY
LAB SCAN, or I.O.S UPLOADS	11 AM CT	PROCESS ON THE SAME DAY	PROCESS ON NEXT BUSINESS DAY



FREE SHIPPING

Free ground shipping for orders over **\$100**

Free 2-day shipping for orders over **\$200**

Free 1-day shipping for orders over **\$300**

*Non-restorative products will be delivered via ground shipping

HAUSZIRCO



STRENGTH
1200MPa

COMPOSITION

ZrO2 94% ~ 95% Other Oxide < 0.5%
Y2O3 4.5% ~ 5.5%
Al2O3 < 0.5%



TRANSLUCENCY
43%

THICKNESS
12/16/20/25/30 mm

SPECIFIC & USAGE
Monolithic / Posterior

SHADES



UNITS
Up to 14



STRENGTH
1050MPa

COMPOSITION

ZrO2 90% ~ 95% Other Oxide < 0.5%
Y2O3 4% ~ 10%
Al2O3 < 0.5%

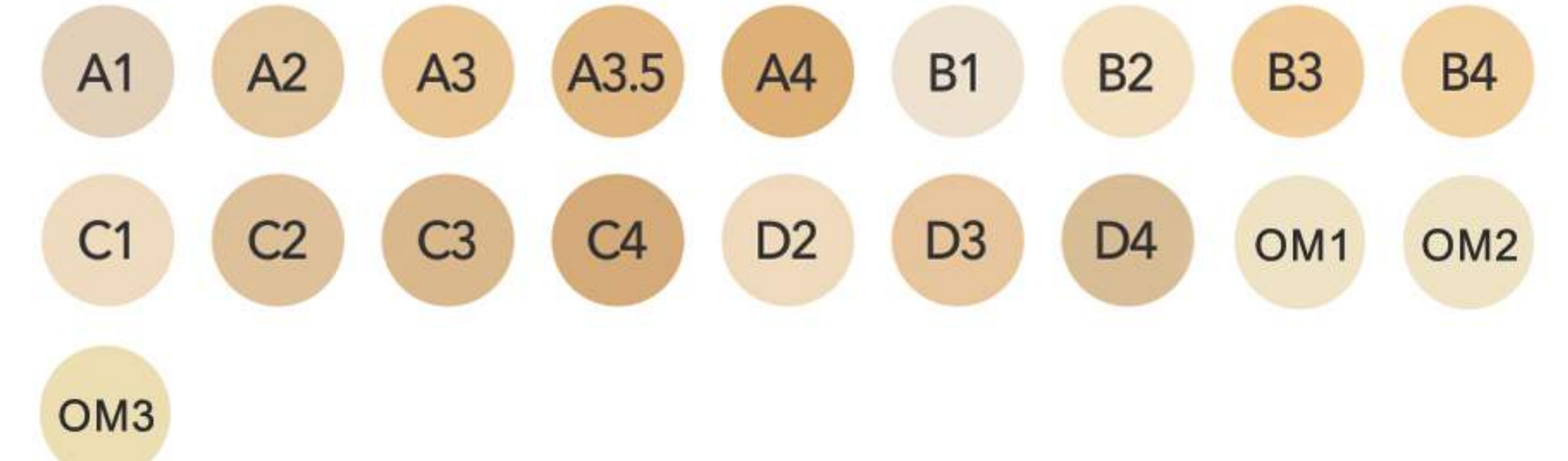


TRANSLUCENCY
53%

THICKNESS
12/14/18/20/25 mm

SPECIFIC & USAGE
Multilayered
Posterior / Anterior

SHADES



UNITS
Up to 14

NIADISCS



STRENGTH

1100MPA

COMPOSITION

ZrO2 90% ~ 95%
Y2O3 4% ~ 10%
Al2O3 < 0.5%

Other Oxide < 0.5%



TRANSLUCENCY

48%

THICKNESS

12/16/20/25/30 mm

SPECIFIC & USAGE

Monolithic
Posterior / Anterior

SHADES

- A1
- A2
- A3
- A3.5
- A4
- B1
- B2
- B3
- B4
- C1
- C2
- C3
- C4
- D2
- D3
- D4
- OM1
- OM2
- OM3



UNITS

Up to 14



STRENGTH

1050MPA

COMPOSITION

ZrO2+HfO2 95%
Y2O3 5 %
Al2O3 <1%



TRANSLUCENCY

57%

THICKNESS

12/14/16/20/25 mm

SPECIFIC & USAGE

Multilayerd
Posterior / Anterior

SHADES

- A1
- A2
- A3
- A3.5
- A4
- B1
- B2
- B3
- B4
- C1
- C2
- C3
- C4
- D2
- D3
- D4
- BL2



UNITS

Up to 7

ZIRCONIA DISC

12mm SIZE PRICING

PRESHADED



\$62



\$70



\$55



\$65

MULTILAYERED



\$77



\$104



\$115



\$95



\$75

PMMA

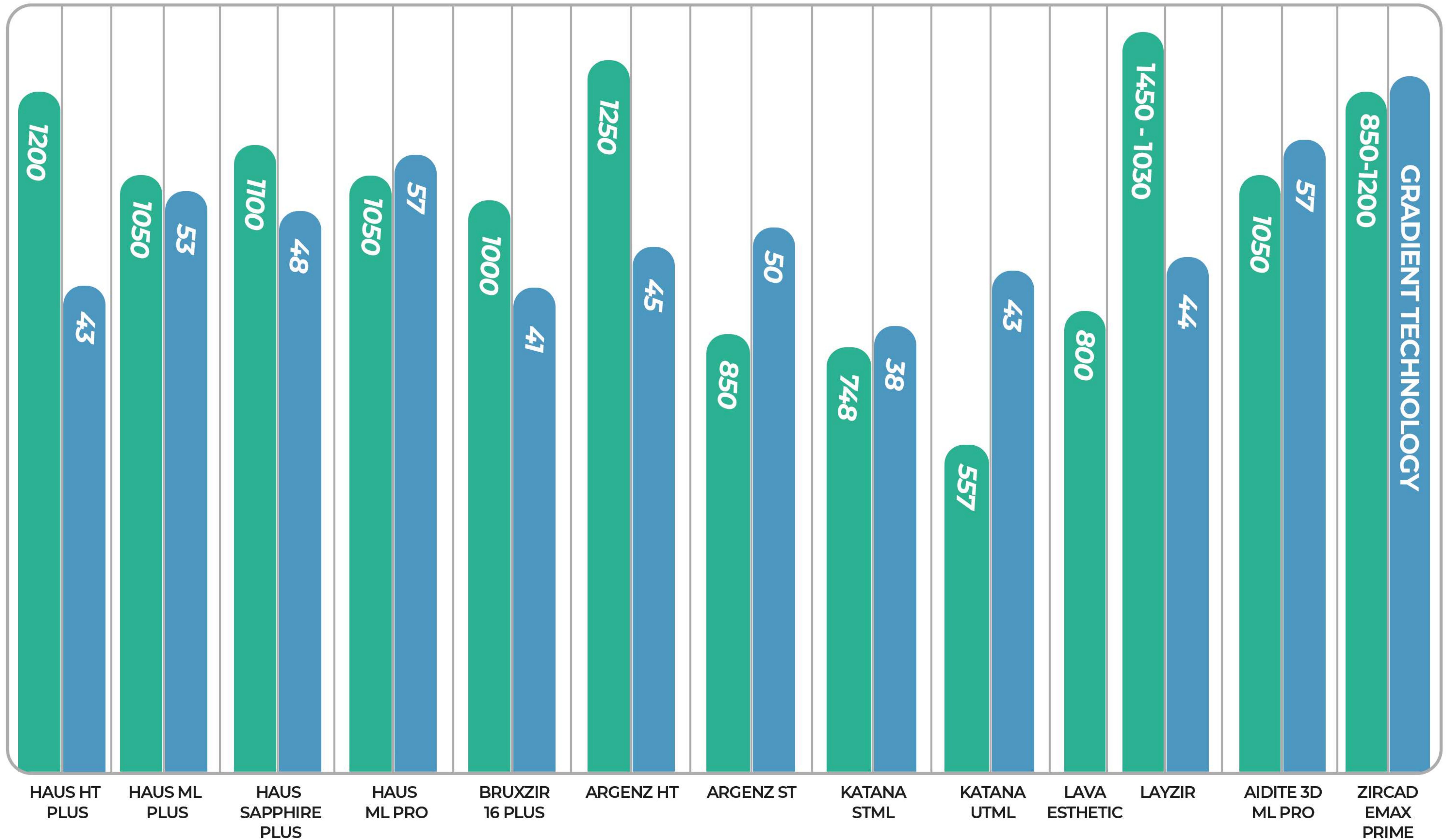


AIDITE
PMMA DISC
\$25

BRAND COMPARISON

● MECHANICAL PROPERTIES

● TRANSLUCENCY



FULL CROWNS

FROM DESIGNED STL FILES

PRESHADED



\$22



\$26



\$30



\$32



\$85



\$85



\$85

METAL



\$32



\$58

TEMPORARY (POLYMETHYL METHACRYLATE)



\$16



\$30

FULL CROWNS

FROM DESIGNED STL FILES

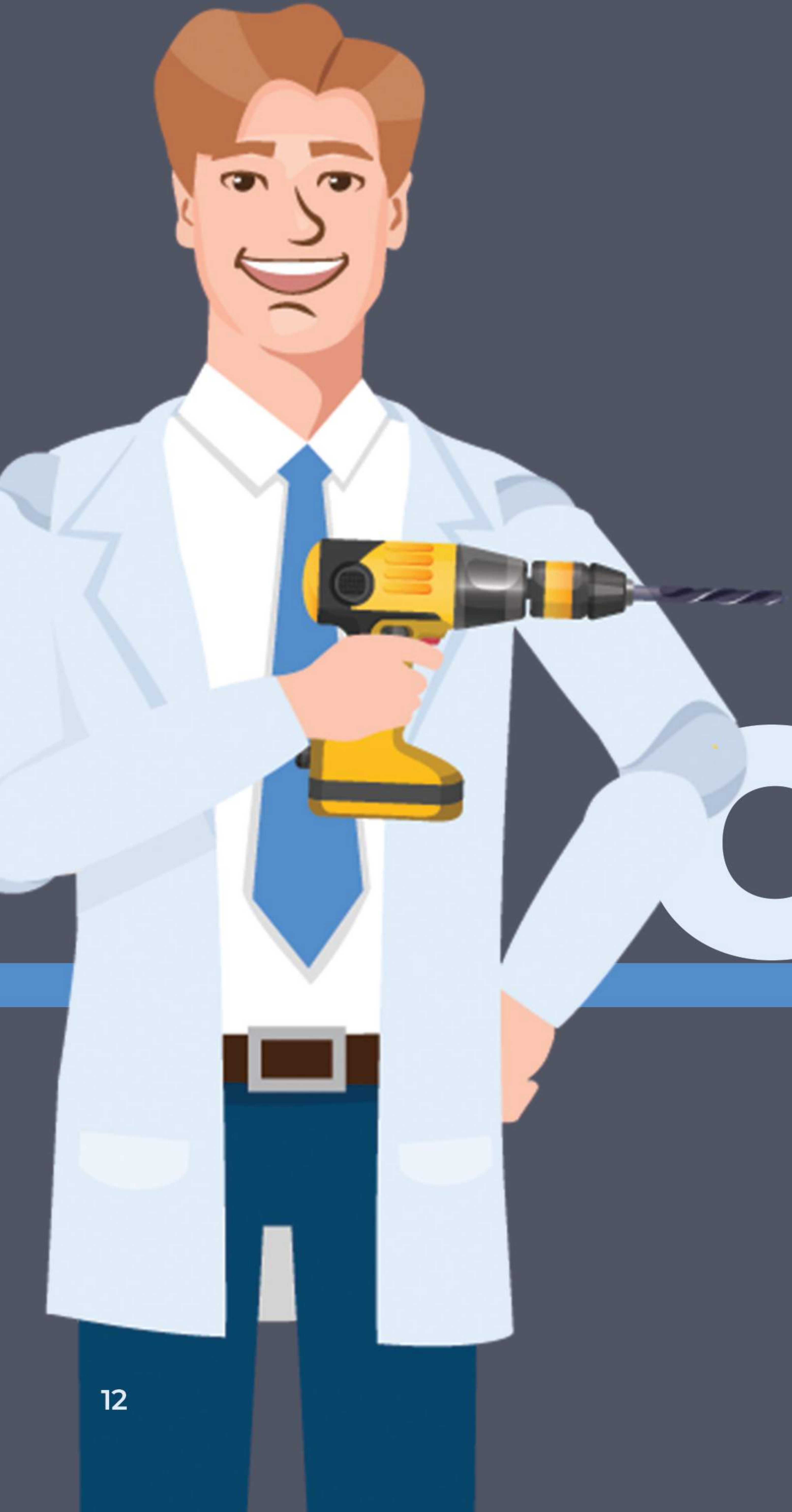
MULTILAYERED

 <p>HAUS ML^{Plus} High Translucent + Multi Layered Zirconia Disk</p> <p>\$29</p>	 <p>57% High Translucency Incisal Area HAUS ML PRO 3D Multi layered Zirconia</p> <p>\$40</p>	 <p>ARGEN ZST</p> <p>\$33</p>	 <p>KATANA[®] UTML Ultra Translucent Multi Layered</p> <p>\$37</p>	 <p>KATANA[®] STML Super Translucent Multi Layered</p> <p>\$37</p>
 <p>3M[™] Lava[™] Esthetic Esthetic Fluorescent Full-Contour Zirconia</p> <p>\$37</p>	 <p>Aidite[®] 3D Multilayer</p> <p>\$40</p>	 <p>LayZir Layered Zirconia</p> <p>\$40</p>	 <p>ZirCAD Prime</p> <p>\$45</p>	



ADDITIONAL COST

- FROM MODEL ----- +\$15
- FROM IMPRESSION ----- +\$23
- FROM LAB SCAN FILE ----- +\$8
- FROM INTRAORAL SCAN FILE ----- +\$20
- STAIN AND GLAZE ----- +\$15
- WHITE COLORING ----- +\$15



COPIINGS

COPINGS

FROM DESIGNED STL FILES

 <p>HAUS HT^{Plus} High Translucent Zirconia</p> <p>\$15</p>	 <p>HAUS SAPPHIRE^{Plus} 48% Translucency Zirconia Disk</p> <p>\$19</p>	 <p>HAUS ML^{Plus} High Translucent + Multi Layered Zirconia Disk</p> <p>\$22</p>	 <p>BruxZir¹⁶ SHADED Solid Zirconia Restorations</p> <p>\$25</p>
 <p>ARGEN Z HT⁺</p> <p>\$25</p>	 <p>3MTM LavaTM Esthetic Esthetic Fluorescent Full-Contour Zirconia</p> <p>\$30</p>	 <p>Scheftner Dental Alloys Titanium</p> <p>\$25</p>	 <p>Scheftner Dental Alloys Chrome Cobalt</p> <p>\$45</p>



ADDITIONAL COST

- FROM MODEL ----- +\$7
- FROM IMPRESSION ----- +\$17
- FROM LAB SCAN FILE ----- +\$5
- FROM INTRAORAL SCAN FILE ----- +\$12
- WHITE COLORING ----- +\$15

CUT-BACK CROWNS



CUT-BACK CROWNS

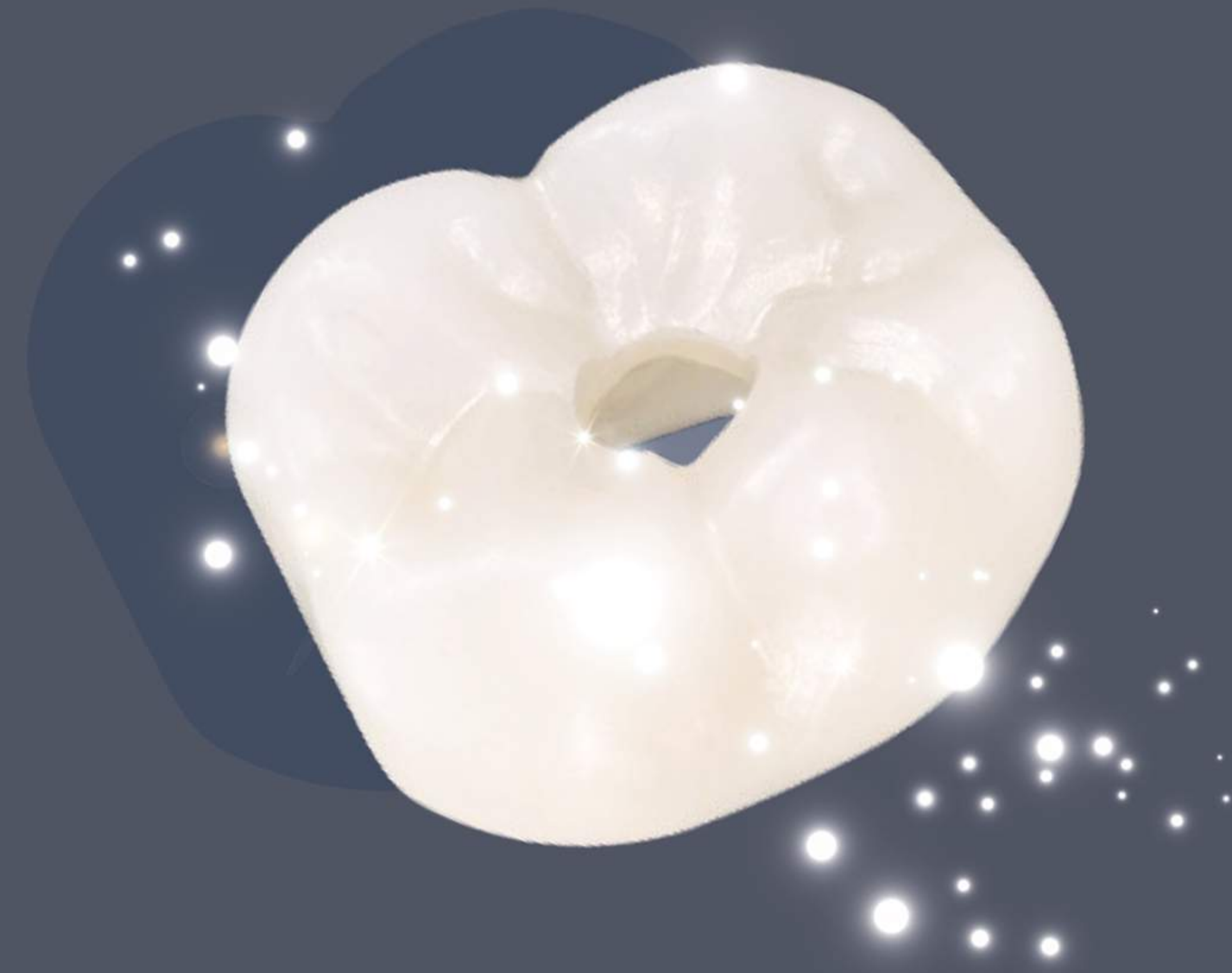
FROM DESIGNED STL FILES

 <p>HAUS HT^{Plus} High Translucent Zirconia</p> <p>\$22</p>	 <p>HAUS SAPPHIRE^{Plus} 48% Translucency Zirconia Disk</p> <p>\$26</p>	 <p>HAUS ML^{Plus} High Translucent Zirconia Disk</p> <p>\$29</p>	 <p>HAUS ML PRO 3D Multi layered Zirconia</p> <p>\$40</p>	 <p>BruxZir¹⁶ SHADED Solid Zirconia Restorations</p> <p>\$30</p>
 <p>ARGEN Z HT⁺</p> <p>\$32</p>	 <p>ARGEN Z ANTERIOR Super Translucent Zirconia</p> <p>\$33</p>	 <p>3MTM LavaTM Esthetic Esthetic Fluorescent Full-Contour Zirconia</p> <p>\$37</p>	 <p>LayZir Layered Zirconia</p> <p>\$40</p>	 <p>ZirCAD Prime</p> <p>\$45</p>



ADDITIONAL COST


- FROM MODEL ----- +\$15
- FROM IMPRESSION ----- +\$23
- FROM LAB SCAN FILE ----- +\$10
- FROM INTRAORAL SCAN FILE ----- +\$20
- WHITE COLORING ----- +\$15



IMPLANT CROWNS

IMPLANT CROWNS

FROM DESIGNED STL FILES

 <p>HAUS HT^{Plus} High Translucent Zirconia Disk</p> <p>\$37</p>	 <p>HAUS SAPPHIRE^{Plus} 48% Translucency Zirconia Disk</p> <p>\$41</p>	 <p>HAUS ML^{Plus} High Translucent + Multi Layered Zirconia Disk</p> <p>\$44</p>	 <p>HAUS ML PRO 3D Multi layered Zirconia</p> <p>\$55</p>	 <p>HAUS PMMA IMPLANT</p> <p>\$31</p>
 <p>BruxZir 16 SHADED Solid Zirconia Restorations</p> <p>\$45</p>	 <p>ARGEN Z HT+</p> <p>\$47</p>	 <p>3M™ Lava™ Esthetic Esthetic Fluorescent Full-Contour Zirconia</p> <p>\$52</p>	 <p>LayZir Layered Zirconia</p> <p>\$55</p>	 <p>ZirCAD Prime</p> <p>\$60</p>



ADDITIONAL COST

- FROM MODEL ----- +\$20
- FROM IMPRESSION ----- +\$40
- FROM INTRAORAL SCAN FILE ----- +\$30
- TI-BASE (1 Screw Included) ----- +\$55
- ↳ CEMENTATION ----- +\$15
- EXTRA SCREW ----- +\$25
- STAIN AND GLAZE ----- +\$15
- WHITE COLORING ----- +\$15

CUSTOM ABUTMENTS



CUSTOM ABUTMENTS

FROM DESIGNED STL FILES

CUSTOM ABUTMENTS



Hybrid

\$35



Titanium

\$79



Chrome Cobalt

\$99



ADDITIONAL COST

- FROM MODEL ----- +\$30
- FROM IMPRESSION ----- +\$50
- FROM LAB SCAN FILE ----- +\$20
- FROM INTRAORAL SCAN FILE ----- +\$40
- EXTRA SCREW ----- +\$25
- GOLD ANODIZING ----- +\$20
- TI-BASE (1 screw included) ----- +\$55
- CEMENTATION ----- +\$20
- SEATED SCAN ----- +\$10

CUSTOM ABUTMENT + IMPLANT CROWN (COMBO)



HAUS Custom Abutment + Implant Crown

\$101

Available Implant Crown Material

- Haus HT plus
- Haus ML plus
- Haus Sapphire plus
- Haus ML Pro
- Bruxzir
- Argen Z HT +
- And More...

(All major implant systems are available)



ADDITIONAL COST

- FROM MODEL ----- +\$70
- FROM IMPRESSION ----- +\$120
- FROM LAB SCAN FILE ----- +\$90
- FROM INTRAORAL SCAN FILE ----- +\$110
- WHITE COLORING ----- +\$15
- STAIN AND GLAZE ----- +\$15
- SCREW ACCESS HOLE ----- +\$15

FULL ARCH PROSTHESIS



FULL ARCH PROSTHESIS

FROM DESIGNED STL FILES



HAUS HT^{Plus}
FULL ARCH HYBRID

\$650



HAUS PMMA

\$250



HAUS SAPHIRE^{Plus}
FULL ARCH HYBRID

\$800



ARGEN Z HT⁺
FULL ARCH HYBRID

\$950



HAUS ML^{Plus}
FULL ARCH HYBRID

\$850



LayZir
Layered Zirconia
FULL ARCH HYBRID

\$1000



HAUS ML PRO
3D Multi layered Zirconia
FULL ARCH HYBRID

\$1000



IPS e.max[®] Prime
FULL ARCH HYBRID

\$1000



ADDITIONAL COST

- GINGIVA COLORING (During Green State) ----- +\$50
- STAIN AND GLAZE (with Pink Gingiva) ----- +\$400
- PINK GINGIVA COMPOSITE (on PMMA Hybrid Full Arch) ----- +\$120
- TI-BASE (1 Screw Included) ----- +\$55



DESIGN FEE

- FROM MODEL ----- +\$300

FULL ARCH with TITANIUM BAR

FROM DESIGNED STL FILES



HAUS iBar
HT Zirconia with Titanium Implant Bar

\$1010



HAUS iBar
ML Zirconia with Titanium Implant Bar

\$1210



HAUS iBar
Sapphire Zirconia with Titanium Implant Bar

\$1160



HAUS iBar
ML Pro Zirconia with Titanium Implant Bar

\$1360



ADDITIONAL COST

- STAIN AND GLAZE (with Pink Gingiva) ----- +\$420
- PINK ANODIZING ----- +\$75
- CEMENTATION ----- +\$100
- GINGIVA COLORING ----- +\$50



DESIGN FEE

- FROM MODEL ----- +\$350
- FROM IMPRESSION ----- +\$500

FULL ARCH PROSTHESIS

FROM DESIGNED STL FILES



TriLor[®]

Fibre Reinforced Resin Bar

\$350



Scheftner
Dental Alloys

Titanium Bar

\$360



Scheftner
Dental Alloys

Titanium Thimble Bar

\$460



Scheftner
Dental Alloys

Chrome Cobalt Thimble Bar

\$660



ADDITIONAL COST

- PINK ANODIZING ----- +\$50
- SCREW ----- +\$25
- OPAQUE ----- +\$200
- ACRYLIC GUM----- +\$250



DESIGN FEE (FROM MODEL)

- BAR ----- +\$200
- THIMBLE BAR ----- +\$250

DIGITAL DENTURES



DIGITAL DENTURES

FROM DESIGNED STL FILES

PRINTED DENTURES



Carbon DIGITAL PRINTED DENTURE TEETH

\$50



Carbon DIGITAL PRINTED DENTURE GUM

\$60



Carbon DIGITAL PRINTED FULL DENTURE

\$110



ADDITIONAL COST

- MODEL ----- +\$70
- IMPRESSION ----- +\$85
- INTRAORAL SCAN FILE ----- +\$60
- FUSE AND CURE ----- +\$20
- GLAZE AND FINISH ----- +\$20

MILLED DENTURES



\$275

One disc, One milling process, One denture

Ivotion digital dentures offer a streamlined manufacturing process by being milled from a single disc, removing the need for manual steps. To create these dentures, Ivoclar Design Software is used for the design, followed by milling the CAM File using the PrograMill milling machine.

* Milled dentures require only polishing before delivery



ADDITIONAL COST

- MODEL ----- +\$90
- IMPRESSION ----- +\$105
- INTRAORAL SCAN FILE ----- +\$80
- 3D PRINTED TRY-IN ----- +\$99

DIGITAL PRINT

FROM DESIGNED STL FILES

DIGITAL MODEL PRINT



SINGLE ARCH
DIGITAL PRINT
SOLID MODEL

\$12



UPPER & LOWER
DIGITAL PRINT
QUADRANT MODEL

\$20



UPPER & LOWER
DIGITAL PRINT
FULL ARCH MODEL

\$25



UPPER & LOWER
DIGITAL PRINT
IMPLANT MODEL

\$30



ADDITIONAL COST

- MODEL BUILDING -----+\$15
- ADDITIONAL DIES (PER DIE) -----+\$3

DIGITAL PRINTED NIGHT GUARD



HAUS | HARD GUARD

\$59



HAUS | SOFT GUARD

\$59

Advantages

- United States FDA 510k-Cleared
- Health Canada Approved*
- CE Marked (Class IIA)*
- Unmatched strength
- Stain Resistant
- Highly abrasion-resistant



ADDITIONAL COST

- FROM MODEL -----+\$20
- FROM INTRA ORAL SCAN FILE -----+\$15
- FROM IMPRESSION -----+\$30
- POLISHING -----+\$10

DIGITAL SERVICES

AND E-GIFT CARD

 <p>COPING DIGITAL DESIGN</p> <p>\$8</p>	 <p>FULL CROWN DIGITAL DESIGN</p> <p>\$15</p>	 <p>CUT-BACK DIGITAL DESIGN</p> <p>\$15</p>	 <p>CUSTOM ABUTMENT DIGITAL DESIGN</p> <p>\$40</p>
---	--	--	---

DIGITAL DESIGN SERVICES

 <p>E-Gift Card Amount : \$1000</p> <p>4% Discount</p> <p>\$960</p>	 <p>E-Gift Card Amount : \$2000</p> <p>5% Discount</p> <p>\$1900</p>	 <p>E-Gift Card Amount : \$3000</p> <p>5% Discount</p> <p>\$2850</p>	 <p>E-Gift Card Amount : \$5000</p> <p>5% Discount</p> <p>\$4750</p>
---	--	--	--

E-GIFT CARD SERVICES

DENTAL SUPPLIES



\$14.99



\$14.99



\$14.99



\$24.99

POLISHING & GRINDING

Suitable for
Zirconia and Glass Ceramic

NANO SCAN GEL

Nano scan gel and Nano scan solution are safer and more effective than powder spray for scanning abutments.

They block out metal, resulting in accurate and reliable results.



NANO SCAN SOLUTION
\$29.99



NANO SCAN GEL
\$69.99



Glazing Pen
(3D Brush)

\$29



Glazing Pen
(2D Brush)

\$27



Color Palette
Made of Zirconia

\$150



Biomic Refills
(4g/bottle)

\$44.95

STAIN & GLAZE

Refills and Tools

SINTERING TOOLS

Zirconia Beads & Sintering Tray



Zirconia Sintering Tray
(100* 35 mm)

\$43



Beads
(200g/1 Pouch)

\$35

BIOMIC STAIN/GLAZE KIT

FULL KITS (4g/bottle)



\$550



\$1000



\$600

BASIC

2D PASTE

Shade A, Shade B, Shade C, Shade D, Blue 1, White, Glaze-F

3D PASTE

3DN

LIQUID

Coloring Liquid 1, Coloring Liquid 2

INCLUDED ACCESSORIES

2D Brush, 3D Brush, 6 Shade Matcher



Shade A Shade B Shade C Shade D Blue 1



White Glaze-F Glaze-3DN

AESTHETIC

2D PASTE

Shade A, Shade B, Shade C, Shade D, Blue 1, Blue 2, White, White-c, Brown, Terracotta, Black, Orange 1, Orange 2, Mauve, Yellow, Pink-R, Glaze-F

3D PASTE

3DN, 3DV

LIQUID

Coloring Liquid 1, Coloring Liquid 2

INCLUDED ACCESSORIES

2D Brush, 3D Brush, 16 Shade Matcher



Shade A Shade B Shade C Shade D Orange 1 Orange 2 Yellow



Terracotta Blue 1 Blue 2 Black Mauve White



White-C Brown Pink-R Glaze-F Glaze-3DV Glaze-3DN

GUM

2D PASTE

Pink 5, Pink R

3D PASTE

Pink 1, Pink 2, Pink 3, Pink 4, 3DN, 3DV

LIQUID

Coloring Liquid 1, Coloring Liquid 2

INCLUDED ACCESSORIES

3D Brush, 6 Shade Guide

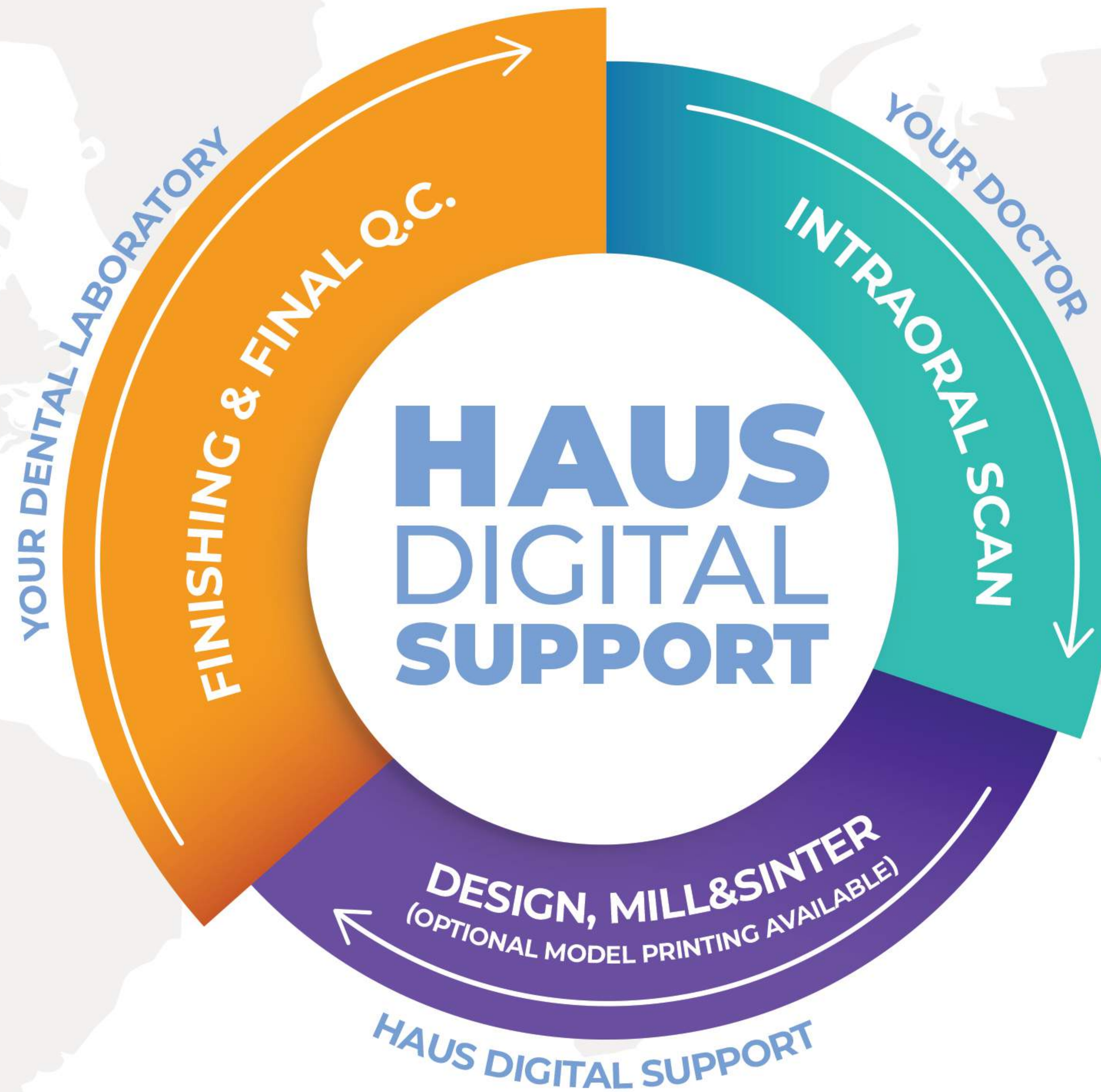


Pink 1 Pink 2 Pink 3 Pink 4 Pink 5



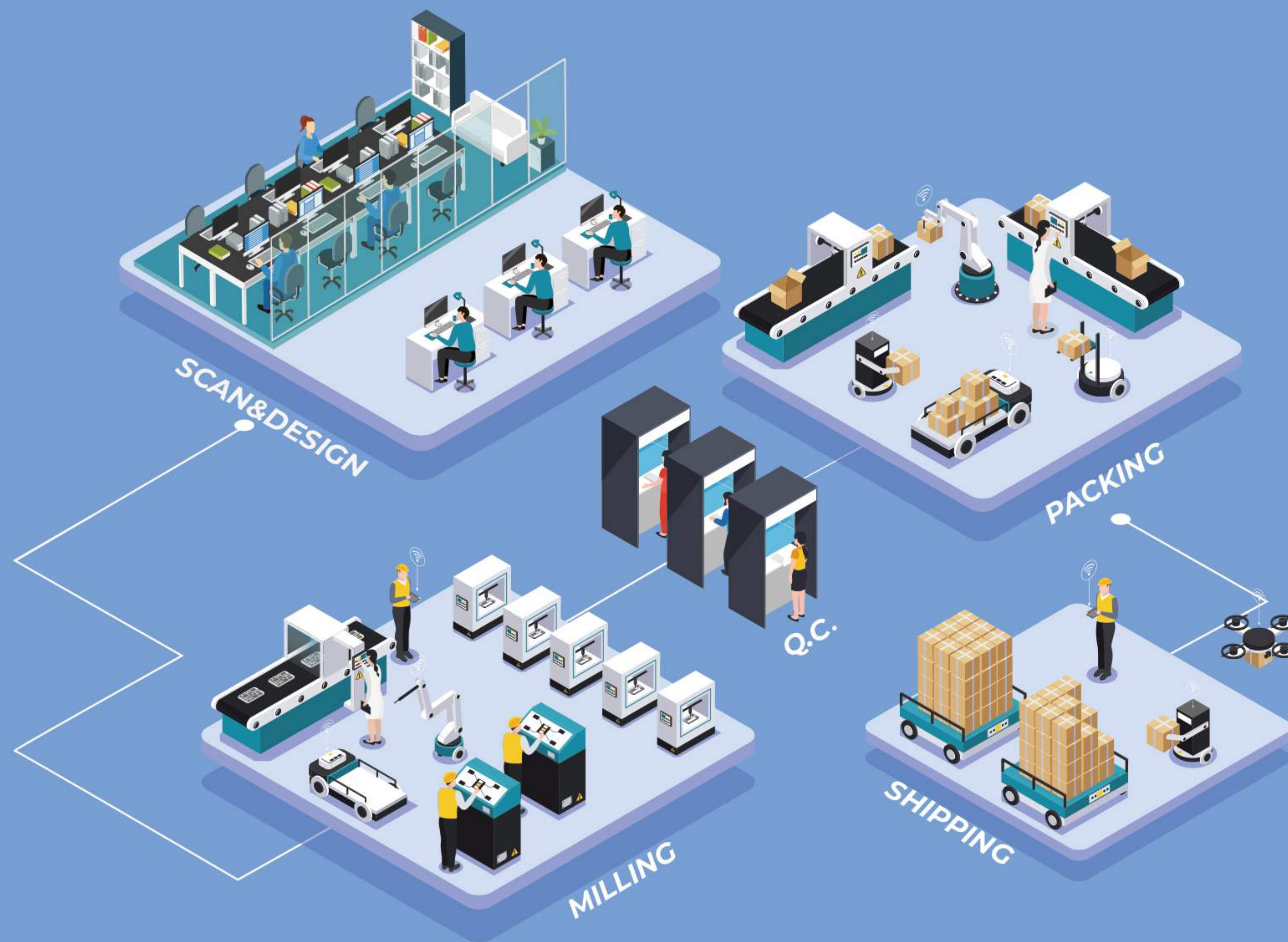
Pink R 3DV 3DN

Join the World of Digital Dentistry Today
with **HAUS Digital Support!**



We accept





WWW.HAUSMILLING.COM



HAUS_MILLING_CENTER



HAUS MILLING CENTER

(833) 428-7645 HAUSMIL
INFO@HAUSMILLING.COM
2835 VIRGO LN DALLAS, TX 75229