

## SAFETY ALCOHOL BURNER

### PARTS:

- |                           |                  |
|---------------------------|------------------|
| 1 Alcohol bottle assembly | 1 Safety base    |
| 1 Cap                     | 1 Wire gauze top |
| 1 pr. Legs                |                  |

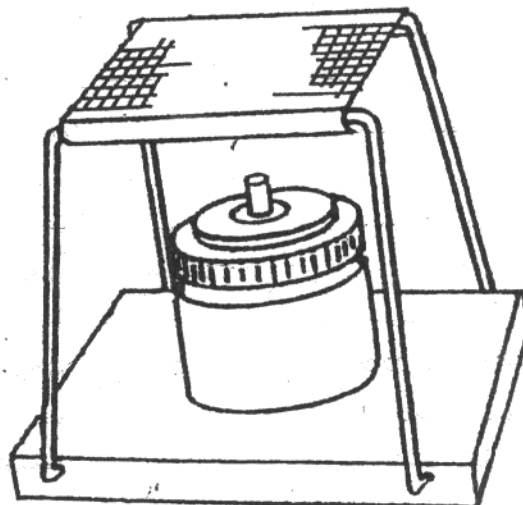
### ASSEMBLY PROCEDURE:

1. To assemble the alcohol burner, insert one end of the wick into the cap from the inside with a twisting motion, until about  $\frac{1}{4}$  inch of the wick is showing. Wrap the wick with the fiberglass packing so that it is firmly pressing against the top of the cap.
2. Add alcohol to the bottle until it is about  $\frac{1}{2}$  full. For best results, use absolute ethyl alcohol. When necessary, add alcohol to saturate the fiberglass packing, taking care not to over-fill or spill alcohol. (Use about 100cc).
3. Insert the wrapped wick carefully into the bottle and screw on the cap firmly.
4. Allow about 5 minutes for the wick to dampen with the alcohol before lighting.
5. Assemble the stand as shown in the drawing.
6. With use, the burning end of the wick may become charred and interfere with burning. This can be cut away with scissors and the height of the wick readjusted.

**SAFETY CAUTION:** ALCOHOL IS EXTREMELY COMBUSTIBLE. IT IS SUGGESTED THAT THE INSTRUCTOR INITIALLY FILL THE ALCOHOL AND ADD AS NECESSARY.

**NOTE:** USE ONLY ETHYL ALCOHOL. DO NOT USE DUPLICATING FLUID, OR ANY OTHER ALCOHOLS SINCE THEY MAY PRODUCE POLLUTANTS OR TOXIC VAPORS WHEN BURNED.

**CAUTION:** FIBERGLASS IS AN IRRITANT. USE PLASTIC OR RUBBER GLOVES WHEN HANDLING.



### \*\* WARNING\*\*

FOR SAFE USE OF ALCOHOL BURNER  
Observe all fire and safety regulations.  
An open flame burner can be hazardous.  
Close supervision is necessary when burner is used.

### MINIMUM SAFETY RULES

Wear eye protection.

Use only approved fuel dispensed from an approved, closed fuel container.

Use a funnel for filling. Do not fill burner to top:  $\frac{1}{2}$  to  $\frac{2}{3}$  full is enough.

Fill Burner away from open flame, Work area, and chemicals.

Do not expose skin, hair or clothing to open flame. Do not expose paper, books, or flammable material to open flame.

Extinguish Burner by capping. Keep burner capped when not in use.

All rooms where burner is used should have fire protection equipment.

Never carry a lighted burner or light another burner from a lighted burner.

Above rules are minimum. Users must establish their own specific safety rules.

***We hereby waive all responsibility for any injuries incurred through the use of this alcohol burner!!!***