

Prepared for: Defy  
3858 Walnut St. Suite 168  
Denver, CO 80205  
[info@drinkdefy.com](mailto:info@drinkdefy.com)  
+ 720-893-1129

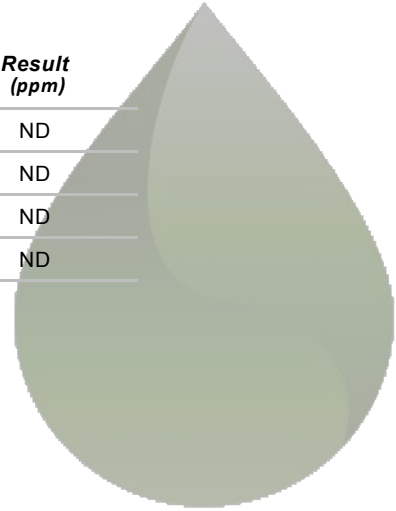
## Lemonade

|                         |            |                          |                   |
|-------------------------|------------|--------------------------|-------------------|
| <b>Report Created:</b>  | 10/08/2019 | <b>CC ID:</b>            | 1907NCAL0008.0043 |
| <b>Sample Received:</b> | 9/17/2019  | <b>Method:</b>           | NCAL SOP-103      |
| <b>Batch Number:</b>    | 19100      | <b>Item Name:</b>        | Lemonade          |
|                         |            | <b>Product Category:</b> | Liquid            |

## METAL RESULTS – ICP-MS Analysis

| <i>Compound</i> | <i>LOQ (ppm)</i> | <i>Result (ppm)</i> |
|-----------------|------------------|---------------------|
| Arsenic         | 0.10             | ND                  |
| Cadmium         | 0.10             | ND                  |
| Lead            | 0.10             | ND                  |
| Mercury         | 0.10             | ND                  |

- ND stands for not detected or <LOQ



## NOTES

### Metals Testing:

The instrument used for this test was an inductively coupled plasma mass spectrometer (ICP-MS). The sample is extracted using a microwave extraction and then the extracted sample is run on the instrument. This ICP-MS method is validated for the extracted 4 metals. None of these metals tested were detected in this sample.

## FINAL APPROVAL

PREPARED BY / DATE: Deborah Schordock 9/18/19

APPROVED BY / DATE: Carolyn Friedrich 10/9/19

*This product has been tested by North Coast Analytical Laboratories, LLC (North Coast). North Coast makes no claims as to the efficacy, safety, or other risks associated with any detected or non-detected levels of any analyte reported herein. Values reported relate only to the product tested. This Certificate shall not be reproduced, except in full, without the written consent of North Coast. ISO/IEC 17025:2017 Accredited A2LA Certificate Number 4849.02.*