



Washing Machine

OWNER'S MANUAL

FP-90LTL065GETM-N2

FP-90LTL075GETM-N2

Read This Manual

Use all instructions and explanation on installation before use. Follow the instructions carefully. Keep the operation instructions handy for later use. If the washing machine is sold or passed on, ensure that the new owner always receives this manual.

CONTENTS

SAFETY INSTRUCTIONS

- Safety instructions 2

INSTALLATION

- Product description 8
- Installation area 9
- Unpacking the washing machine 9
- Installation of drain hose 9
- Levelling the washing machine 10
- Selection of tap 11
- Connection of inlet hose, tap and washing machine... 11

OPERATIONS

- Preparation before washing..... 12
- Washing 12
- After washing..... 12
- Washing matters needing attention 13
- The usage of detergent and washing powder..... 13
- Control pane 14
- Options 15
- Personalized setting of washing program..... 16
- Operations of washing process..... 16
- Washing program table 17

Maintenances

- Cleaning and care 18
- Cleaning the cabinet..... 18
- Trouble shooting..... 19
- Technical information 20

SAFETY INSTRUCTIONS

■ SAFETY INSTRUCTIONS

For your safety, the information in this manual must be followed to minimize the risk of fire or explosion, electric shock, or to prevent property damage, personal injury or loss of life.

- This appliance is not intended for use by persons (including children) with reduced physical, sensory or mental capabilities or lack of experience and knowledge unless they have been given supervision or instruction concerning use of the appliance by a person responsible for their safety.
- Children should be supervised to ensure that they do not play with the appliance.
- If the supply cord is damaged, it must be replaced by the manufacturer, its service agent or similarly qualified persons in order to avoid a hazard.
- The new hose-sets supplied with the appliance are to be used and that old hose-sets should not be reused.
- The openings must not be obstructed by a carpet.
- This appliance is intended to be used in household and similar applications such as:
 - staff kitchen areas in shops, offices and other working environments;
 - farm houses;
 - by clients in hotels, motels and other residential type environments;
 - bed and breakfast type environments;
 - areas for communal use in blocks of apartments and laundry shops.

SAFETY INSTRUCTIONS

Model	Washing Capacity	Standard Water Pressure
FP-90LTL065GETM-N2	6.5kg	0.03MPa~0.8MPa
FP-90LTL075GETM-N2	7.5kg	0.03MPa~0.8MPa

Explanation of the symbols:



Warning!

This combination of symbol and signal descriptive indicates a potentially dangerous situation which may result in death or serious injuries unless it is avoided.



Caution!

This combination of symbol and descriptive word indicates a potentially dangerous situation which may result in slight or minor injuries or damage to property and the environment.

SAFETY INSTRUCTIONS



Note!

This combination of symbol and descriptive word indicates a potentially dangerous situation which may result in slight or minor injuries.



Warning!

Electric shock!

- This washing machine is for indoor use only.
- Do not put this washing machine in a humid place.
- Hands should not be inserted into the rotating drum .
- Before doing any maintenance the unit, unplug the appliance from the electrical source.
- Always unplug the machine and turn off the water supply after use. Be aware of the maximum and minimum inlet water pressure which is in megapascals (MPa)
- To ensure your safety, power plug must be inserted into an earthed three-pole socket. Check carefully and make sure that your socket is properly and reliably earthed.
- Make sure that the water and electrical devices provisions are connected by a qualified technician in accordance with the manufacturer's instructions and local safety regulations
- This product is for domestic use only

SAFETY INSTRUCTIONS

Risk to children!

- The appliance can not be used by children and persons with reduced physical sensory or mental capabilities or lack of experience and knowledge if they have been given supervision or instruction concerning use of the appliance in a safe way and understand the hazards involved. Children shall not play with the appliance. Cleaning and user maintenance shall not be done by children without supervision.
- Animals and children may climb into the machine. Check the machine before every operation.
- Children should be supervised that they do not play with the appliance.
- Keep children and animals far away from the machine during operation.

Risk of explosion!

- Do not wash or dry articles that have been cleaned in, washed in, soaked in, or dabbed with combustible or explosive substances(such as wax, oil, paint, gasoline, degreasers, dry-cleaning solvents, kerosene, etc.) .This may result in fire or explosion.
- Rinse the clothes or wash articles thoroughly by hand before putting them in the appliance .

SAFETY INSTRUCTIONS



Caution

Installing the product!

- This washing machine is for indoor use only.
- It is not intended for built-in installation.
- The openings must not be obstructed by a carpet.
- The washing machine shall not be installed in bath rooms or very wet rooms as well as in the rooms with explosive or caustic gases.
- Remove all packaging materials before using the appliance. Otherwise, serious damage may result.
- The washing machine with single inlet valve may only be connected to a cold water supply.
- The plug must be accessible after installation.
- Avoid place where the machine is exposed to direct sunlight. Plastic parts may become deformed or discolored and where the machine may become frozen during cold weather.

Risk of damaging appliance!

- Your product is only for home use and is only designed for textiles suitable for machine washing.
- Do not climb up and sit on the top cover of the machine.
- Cautions during Machine Handling and transport:
 - 1.The accumulated water shall be drained out of the machine.
 - 2.Handle the machine carefully. Never hold protruding parts of the machine while lifting.
 - 3.This appliance is heavy, it should be transported carefully.

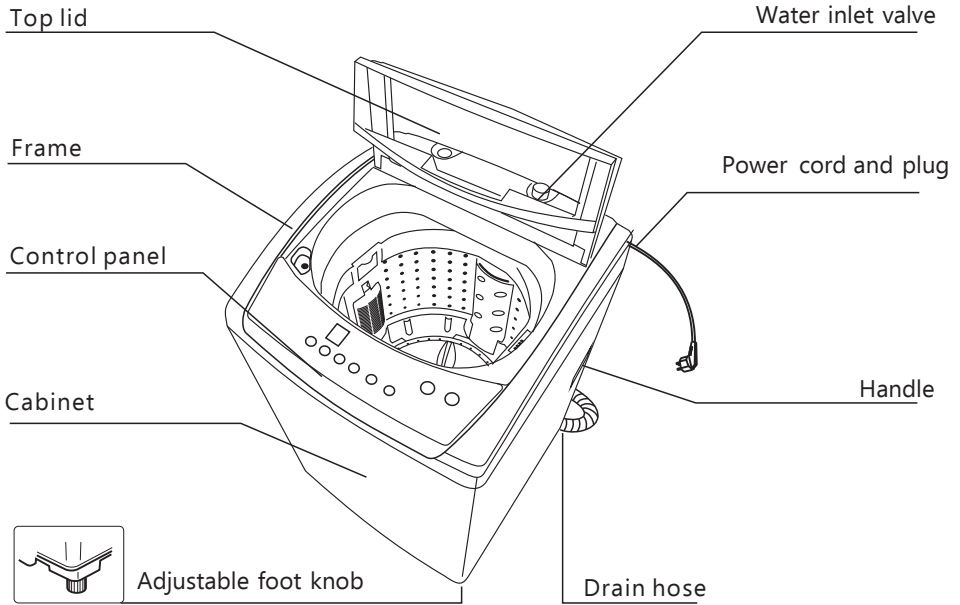
SAFETY INSTRUCTIONS

Operating the appliance!

- Before washing the clothes for the first time, the product shall be operated without clothes using tub clean as the recommended program
- Flammable and explosive or toxic solvents are forbidden. Gasoline and alcohol etc. shall not be used as detergents. Please only select the detergents suitable for machine washing, especially for top-loading fully automatic washing machines.
- Make sure that all pockets are emptied. Sharp and rigid items such as coins, brooches, nails, screws or stones etc. may cause serious damage to this machine.
- Never refill the water by hand during washing.

INSTALLATION

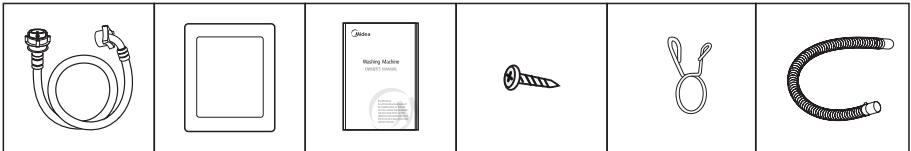
■ Product Description



📌 Note!

- All illustrations in this manual are for reference only. Please refer to the product ,for actual appearance of the parts.

Accessories



Inlet hose cabinet baseboard manual screw spring clammer drain hose

📌 Note!

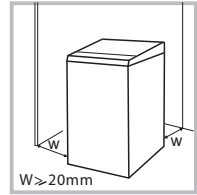
- Note: if the drain hose is already installed on the machine, then there is no spring clammer and drain hose in the accessories.

INSTALLATION

■ Installation Area

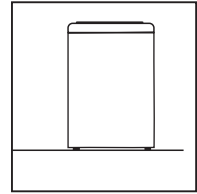
⚠ Warning!

- Stability is important to prevent the product from **moving!**
- Make sure that the product **dose** not stand on the power cord.



Before installing the machine, the location characterized as follows shall be selected:

1. Rigid, dry, and level surface
2. Avoid direct sunlight
3. Sufficient ventilation
4. Room temperature is above 0°C
5. Keep far away from **fuel sources** such as coal or gas

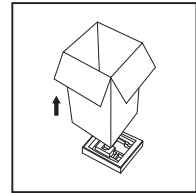


■ Unpacking The Washing Machine

⚠ Warning!

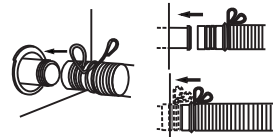
- Packaging material (e.g. Films, Styrofoam) can be dangerous for children.
- There is a risk of suffocation! Keep all packaging **materials** well away from children.

1. Remove the cardboard box and styrofoam packing.
2. Lift the washing machine and remove the base packing.
3. Remove the tape securing the power supply cord and drain hose.
4. **Pick up** the inlet hose from the drum.



■ Installation of drain hose

1. Completely sleeve the drain hose over the water outlet.
2. Fix and tighten it with the spinning clamer.
(As shown in the figure)

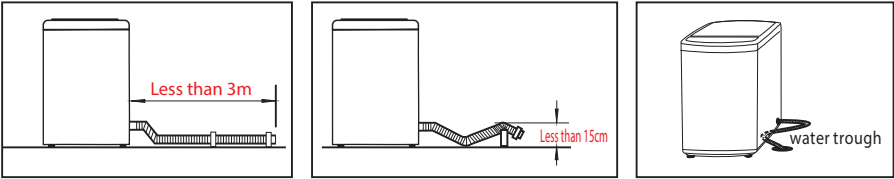


INSTALLATION

⚠ Warning!

- Do not kink, protract or compress the drain hose.
- Position the drain hose properly, otherwise, improper position may result in water leakage.
- If drain hose is too long, do not force it into washing machine as this will cause abnormal noises.

How to place the end of drain hose:



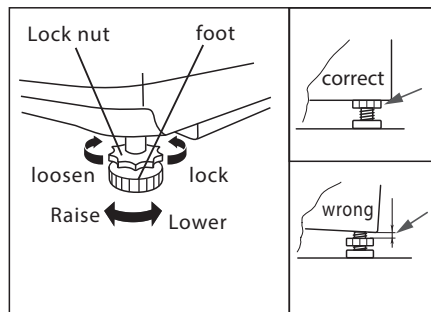
Drain direction	Left or right	
Illustration	Right 	Left

■ Levelling the washing machine

⚠ Warning!

- The lock nuts on all four feet must be screwed tightly against the housing.

1. Check if the feet are properly attached to the cabinet. If not, please rotate them to their original position and tighten the nuts.
2. Check alignment of the product with a leveler and do the succeeding steps if necessary.
3. Loosen the lock nut and rotate the foot either clockwise or counter clockwise, until it closely contacts with the floor.
4. Assure that the lock is secure and then alternately press the four top corners of the machine, to check if the proper adjustment has been done.



INSTALLATION

■ Selection of tap

Please select appropriate tap.



Ordinary tap



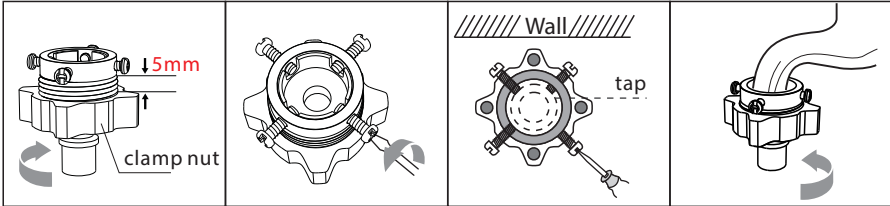
Screw tap



Special washing machine tap

■ Connection of inlet hose, tap and washing machine

1: Connection between ordinary tap and inlet hose.

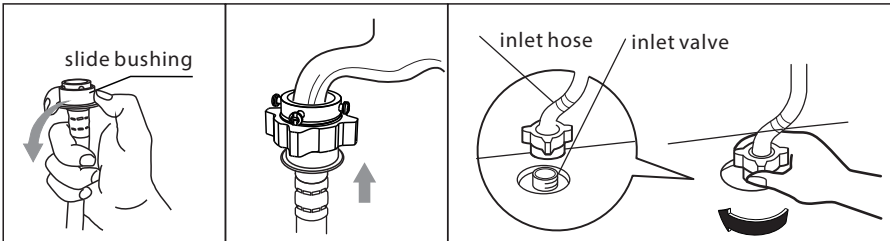


1. Loosen clamp nut to show 5mm groove

2. Loosen four screws

3. Set connecting base on tap and tighten screws evenly

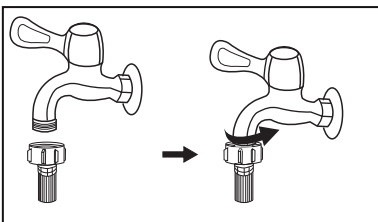
4. Tighten clamp nut



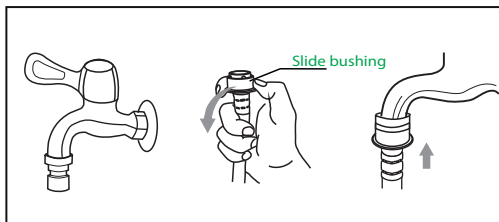
5. Press slide bushing, 6. Connection finished insert inlet hose into connecting base

7. After connection and installation, check if there is water leakage

2: Connection between screw tap and inlet hose.



tap with threads and inlet hose



special tap for washing machine

⚠ Warning!

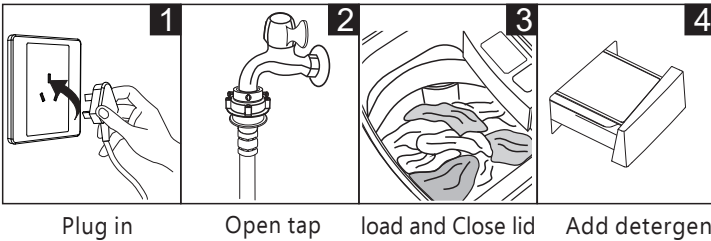
- To prevent leakage or water damage, follow the above-mentioned instructions!
- Do not kink, crush, modify or cut the water inlet hose.

OPERATION

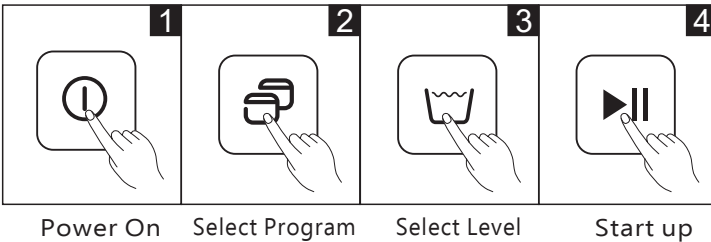
■ Preparation Before Washing

⚠ Caution!

- Before washing, please make sure that the unit is installed properly.
- Before washing for the first time, the washing machine shall be operated without clothes using tub clean as the recommended course.



■ Washing



📌 Note!

- If default is selected, step 2 & 3 may be skipped.

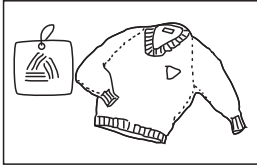
■ After Washing

The buzzer will beep after washing is finished and the power supply will be cut off automatically. At this point, you may unload the laundry.

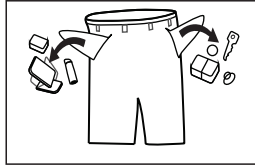
OPERATIONS

■ Washing matters needing attention

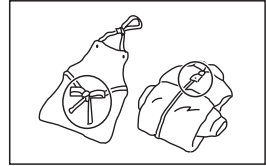
- Before washing ,please check the clothes labels and the detergent usage instructions. Use low-density detergent before wash suitable for washing machines .



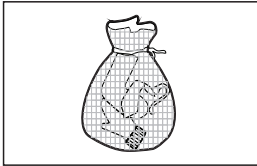
Check the label



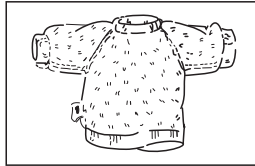
Take items out of the pockets



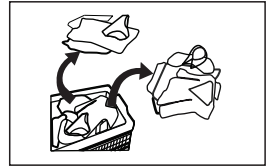
Tie tassels into a knot, fasten zippers and buttons



Put small clothes into a laundry net



Turn the following clothes inside out: those that easily form fiber on its surface and those with long strands of fiber



Segregate clothes with varying textures or materials

⚠ Warning!

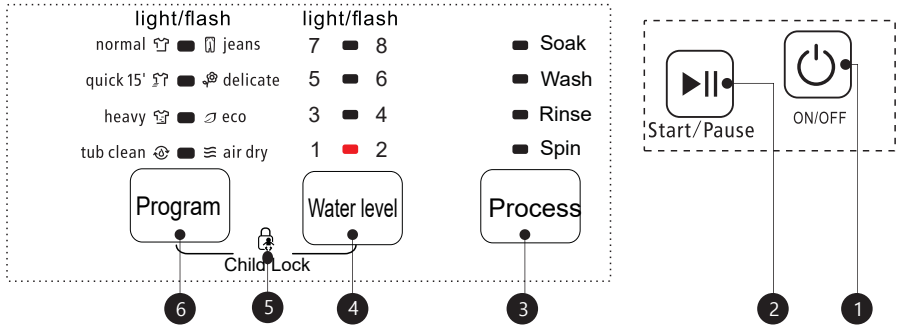
- Washing a single piece of clothing may cause , severe unbalance and consequently sound an alarm. In this case, it is suggested to add one or two more pieces of clothing to the wash load that will also make spinning smoother.
- Do not wash clothes stained with kerosene ,touching gasoline, alcohol and other flammable materials.

■ The usage of detergent and washing powder

- As for powder detergent that can form into clusters or masses, it is suggested to dilute the detergent with some water ,before pouring into the detergent box, this will prevent the inlet of the detergent box from clogging and water from over flowing during the filling process.
- Choose the suitable type of detergent for the various washing temperature to get the best washing effect with less water and energy consumption.

OPERATION

Control Panel



Note!

- This illustration is for reference only. Please refer to the product ,for actual appearance.

1 On/Off

Turn the unit on or off.

2 Start/Pause

Press the button to start or pause the washing cycle.

3 Process

The lights will indicate the process/processes included in the program.

4 Water level

There are eight water levels to choose from (lowest to highest).

5 Child Lock

To activate, press the Program & Water level buttons, at the same time. All buttons, except the power buttons, will be disabled. To de-activate, press again the Program & Water level buttons, at the same time

6

Select based on the laundry type.

OPERATION

■ Option



Water Level

Allows you to select the water level, depending on the clothing category, degree of soiling, and washing habits.



Process

You can choose from the following: wash only, spin only, number of rinses, with or without soaking, and other settings.

OPERATION

■ Personalized setting of washing program

Customers can select the washing program according to actual need, and set washing, rinsing & spinning & water volume function function



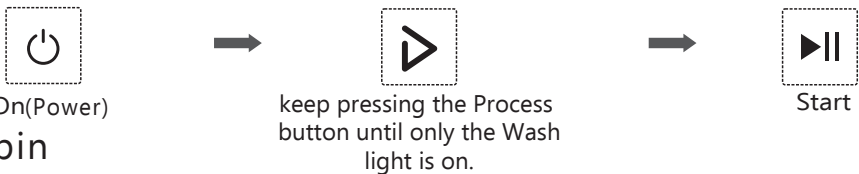
■ Operations of washing process

The user can set a single process or combinations of washing, rinsing and spinning freely according to the need. Detailed operations are as follows for different models:

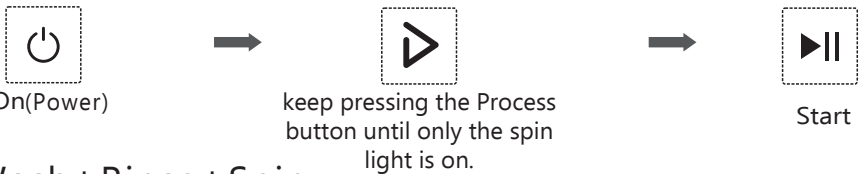
One Touch Smart Wash



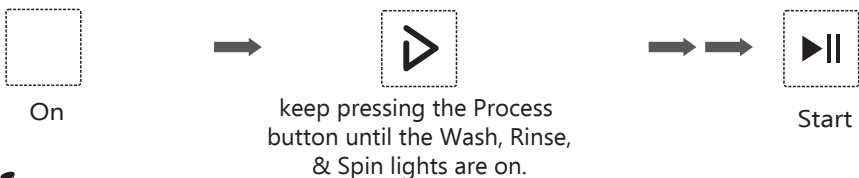
Wash



Spin



Wash + Rinse + Spin



📌 Note!

- Note: Other process combinations are similarly set, as the above examples.

OPERATION

■ Washing Program Table

Light I Flash
normal 57 58 59 jeans
quick 15' 57 58 59 delicate
heavy 57 58 59 eco
tub clean 57 58 59 air dry

Programs are available according to the laundry type.

Only for washers having these functions



Program

Program	
Jeans:	Suitable to wash heavily-stained/ thick clothes.
Quick: (Quick 15')	Suitable to wash lightly - stained clothes and clothes for summer.
Tub clean	Cleans the inner and outer surface of the tub, by running a program (wash, rinse, & spin) with water only (no clothes).
Delicate:	Mid/High/Low water level selection, the tempo is soft, slow washing and spinning speed, for minimal wear and deformation.
Air dry	Spins the clothes, to extract water, without heat application. Simulates the result of drying clothes in a room.
Normal	Standard fabric washing program, suitable to wash cotton fabric. Washing is done once, twice for rinsing and the spin time is a bit long.
Heavy	The washing ability is strong, thereby, washing heavily-soiled clothes better
ECO	For lightly- soiled clothes, rinsing is done once, in order to save water

Fuzzy weighing:

The washing machine will select the water level automatically according to the load weight.

1. When there's water in the tub, this function is not available;
2. Before pressing [Start/Pause] button, if the user selects the water level, there will be no fuzzy weighing function;
3. After pressing [Start/Pause] button, the washing machine will run the fuzzy weighing function. The user can also select the water level as needed.

MAINTENANCE

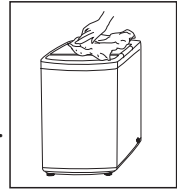
■ Cleaning And Care

⚠ Warning!

- Before your maintenance starts, please unplug the machine and close the tap.

■ Cleaning the cabinet

Proper maintenance of the washing machine can extend its working life. The surface can be cleaned with diluted non-abrasive neutral detergents when necessary. If there is any water overflow, use a wet cloth to wipe it off immediately. No sharp items are allowed.



📌 Note!

- Formic acid and its diluted solvents or equivalent are forbidden, such as alcohol, solvents or chemical products ,etc.

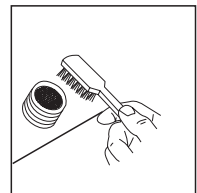
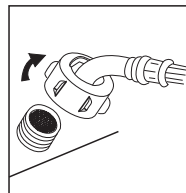
■ Cleaning the inlet filter

📌 Note!

- Inlet filter must be cleaned if pressure of **water from the inlet drops**.

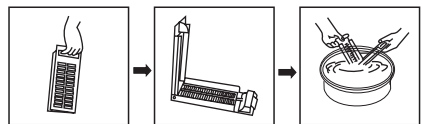
Washing the filter in **the** washing machine:

- 1.Screw off the inlet pipe from the **back** of the machine.
- 2.Pull out the filter with **a pair of** long nose pliers and reinstall it back after being washed.
- 3.Use **a** brush to clean the filter.
- 4.Reconnect the inlet pipe.



Lint filter **cleaning**

- 1.There is a built-in lint filter in your washer. It can help to collect lint during washing cycle.
- 2.It is suggested to clean the lint filter every 10 cycles.
- 3.Take it out and clean the filter with water. Then place it back into the washer.







MAINTENANCE

■ Troubleshooting

If the appliance does not start or it stops during the operation, initially try to find a solution to the problem based on the table below. Otherwise, contact the service center.

Description	Inspection Items
No washing	If the power is off or the fuse is burned out. If the water volume reaches the required water level. (The washer will not work if the water amount does not reach the required water level) The power supply voltage is too low.
No water flows in	If the power is off or the fuse is burned out. If the water supply is cut off or the water pressure is too low. If the inlet hose is properly connected and the water tap is opened. If the filtering screen of inlet valve is blocked by dirt. If the coil of the inlet valve is damaged. If the "Start / Hold" button is pressed after the power switch is pressed.
Abnormal draining	If the end of the water drain hose is placed very high. If the end of water drain hose is immersed in and blocked by a pool of water. If the internal rubber ring of drain valve is blocked by dirt.
Abnormal spin	If the top lid is closed. If most of the clothing are at one side of the drum or if too many clothes are loaded in the machine. If the washer is not placed in stable condition or it is placed in an inclined state. (The ground is not flat).

Description	Reason	Solution
 flashes/ blinks	Alarm for abnormal water filling.	Check the water tap is opened or not.
 flashes/ blinks	Alarm for lid not closed before wash and spin.	Close the lid.
 flashes/ blinks	Unbalanced wash load during spinning	Evenly distribute the clothes in the drum by hand.
 flashes/ blinks	Alarm for water unfinished water draining	Check the water level sensor and drain pump

Note!

- After checking, try to use the appliance again. If the problem persists or the display shows other alarm codes again, contact the service center.

MAINTENANCES

■ Technical Specifications

Model	Washing Capacity	Dimension (W*D*Hmm)	Net Weight	Rated Power	Power Supply	Standard Water Pressure
FP-90LTL065GETM-N2	6.5kg	515 x 525 x 915	29kg	400W	220-230V AC, 60Hz	0.03MPa~0.8MPa
FP-90LTL075GETM-N2	7.5kg	515 x 525 x 915	29kg	450W	220-230V AC, 60Hz	0.03MPa~0.8MPa