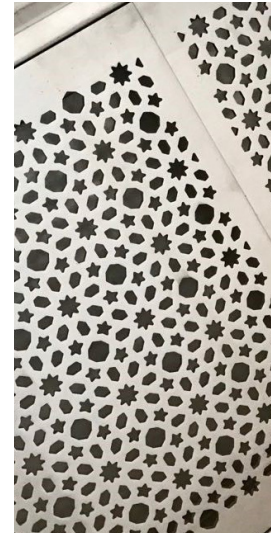




AQUADUCT

INTERIOR SOLUTIONS



Decorative Solutions for Mosques & Islamic Centres

As-Salam-u-Alaikum

Here at Lateral Design Studio we are leading the evolution of construction and drainage products.

Here we highlight our beautiful range of Aquaduct internal products and decorative solutions for mosques and Islamic cultural centres, especially helping to transform Wudu facilities. Using our experience we can help redesign functional drainage into works of art by combining innovative concepts, unique patterns and the very best materials we can source.

- ✓ Wudu Washroom Grates & Channels
- ✓ Stair Balustrade Panels
- ✓ Full Height Screens, Floor Registers, AC Diffusers and much more
- ✓ Bespoke Designs Available
- ✓ Wetrooms and Shower Drainage



STYLISH & MODERN

Our modern, stylish stainless steel grates are highly robust and come in a variety of design options. We offer 316 marine grade stainless steel for wet and washroom environments, or regular 304 grade for all other uses, with a standard brushed finish.

We can also produce pieces in most metals including aluminium and brass, and our bespoke service offers you the opportunity to tweak an existing design or create a completely new pattern for your project. Our bespoke service also gives you the opportunity to laser etch your pieces to create a truly unique personalised piece.



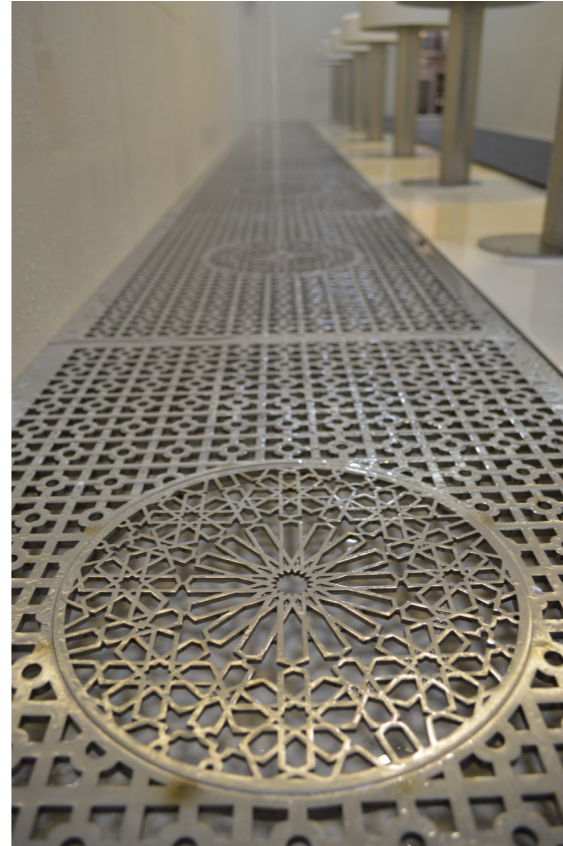
BESPOKE WUDU SOLUTIONS

The Masjid-e-Yusuf mosque located in London, Hornsey updated its washroom and asked Lateral Design Studio to provide a bespoke design for their drainage grates.

They have since praised the work carried out by us in their Wudu inner washroom. We provided over six metres of thick stainless steel grates, cut with a contemporary geo round pattern, and finished with a contrasting round focal piece which captures the tap water at its exact centre.

“We are very happy with the workmanship, precision engineering and prompt delivery provided by Lateral Design Studio, so much so we have already placed re-orders with them. I found their staff very helpful and have recommended this reasonably priced company to our friends. Their design has totally transformed our Wudu washroom.”

- Mohammed Bhuiyan, Masjid-e-Yusuf Mosque



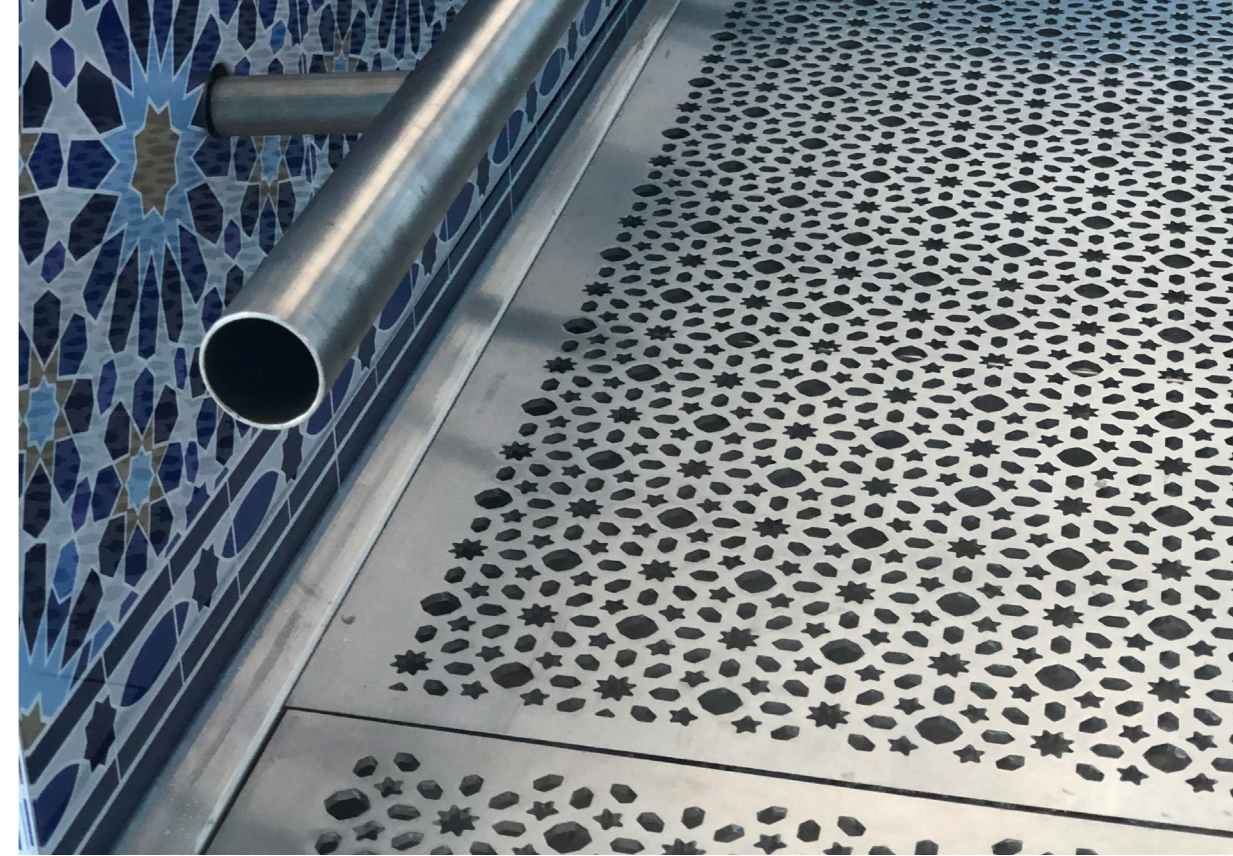
AISHA MASJID & ISLAMIC CENTRE

The Aisha Masjid & Islamic Centre in Reading were transforming their outdated wudu washroom and our innovative designs and creations were the perfect match to help transform this incredible community hub.

Lateral Design Studio were able to provide the newly refurbished wudu room with channels and drainage outlets. The room was given solid marble wudu specific stools and was finished off with Lateral's striking covers, all in polished stainless steel.

"The attention to detail from Lateral was impeccable. This was a challenging project and the wudu grille was intrinsic to the overall aesthetic we were aiming to achieve. It was an absolute pleasure working with them, who are clearly passionate about everything they do, to achieve a thing of such beauty yet highly functional in a very demanding environment. The community is delighted and very proud of their facilities, which have truly set new standards in wudu design."

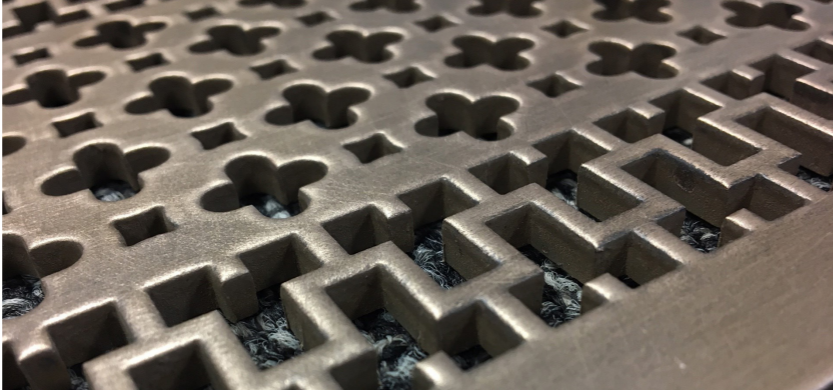
- Mustafa Chaudhary, SpaceOffice



APPLICATIONS & FINISHES

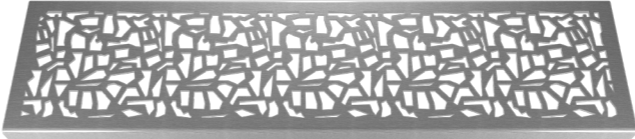
We have a range of products including ventilation covers, floor registers, full height screens, air conditioning louvres and much more.

Our products are all made to the highest standards of workmanship and are available in a wide range of finishes including brass, bronze, or even gold plated.

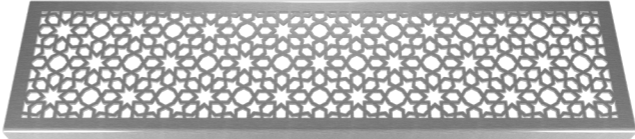


MOORISH DESIGNS

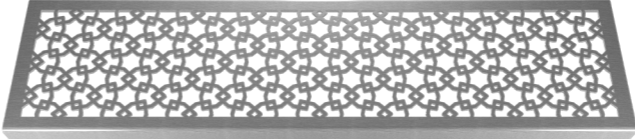
We have a wide range of designs available, see a small selection of these below:



Flint



Starburst



Plex





0208 450 2244 | info@lateraldesignstudio.co.uk | www.lateraldesignstudio.co.uk

© 2019 Lateral Design Studio Ltd. The information provided here, which is the confidential property of Lateral Design Studio Ltd. none of which shall be copied, reproduced, disclosed to others, published or used, in whole or in part, without the express advanced written permission of a duly authorised agent of the company.