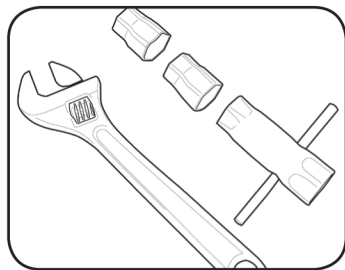
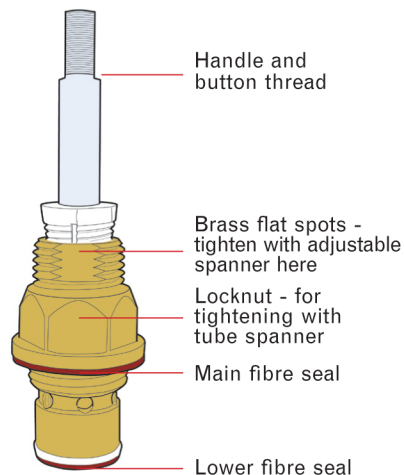


Before installing your XValve spindle, familiarise yourself with every stage of the process, as well as the names of each different part of the spindle.

Make sure that you turn off the water to the premises at the meter, and that you turn it on again once the installation is completed.

Please ensure that the **red fibre seals** are in the **correct position** and that they haven't moved or fallen off in transit.

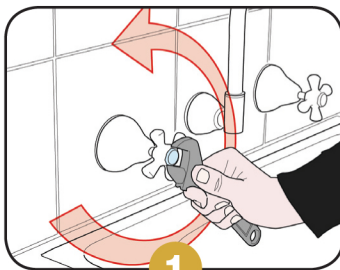
If you are having trouble understanding these instructions, or if you have any issues during the installation, be sure to contact your local licensed plumber.



TOOLS NEEDED:

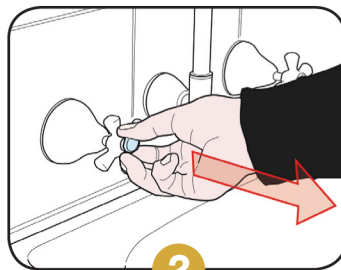
Adjustable spanner

Tap tube spanner - 25mm



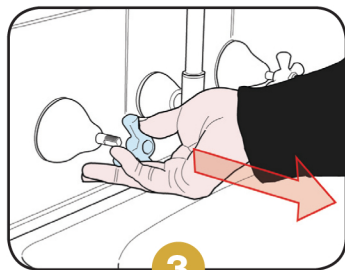
1

Loosen the button



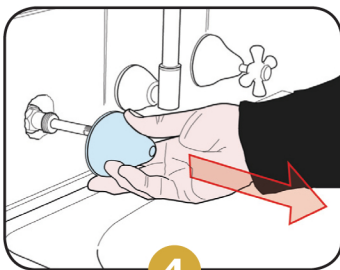
2

Remove the button



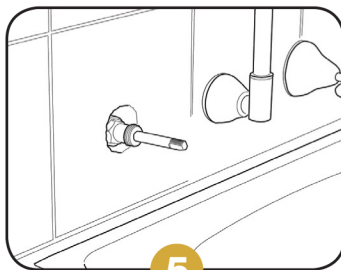
3

Remove the handle



4

Remove the cover
- pull it off or unscrew it

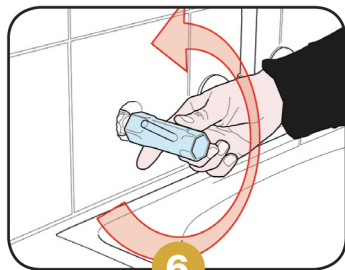


5

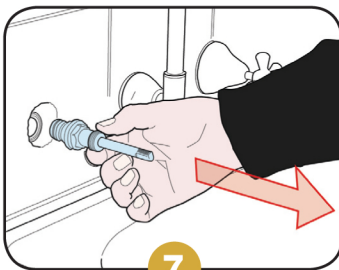
Have you turned your
water supply off?

INSTALLATION INSTRUCTIONS

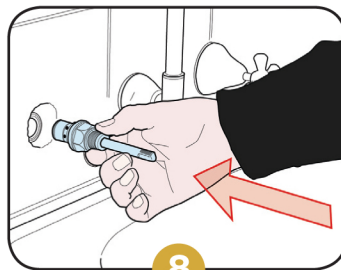
XValve
no washers no leaks genius



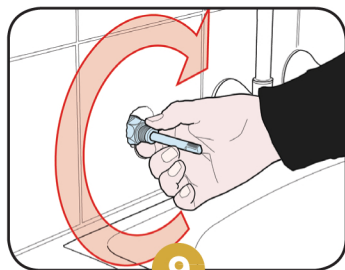
Using the tube spanner,
loosen the spindle



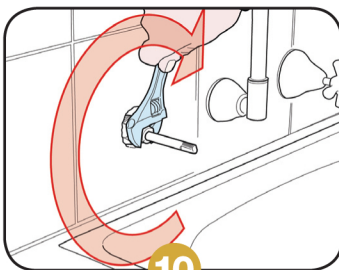
Remove the spindle.
Ensure that washer is
removed and the tap seat
is clean



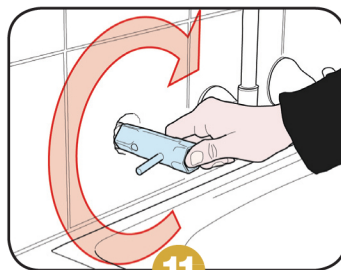
Install the new XValve



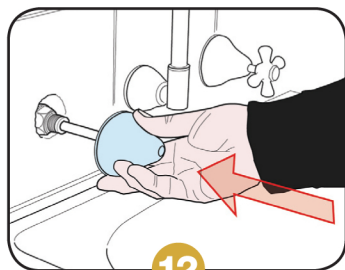
Hand tighten



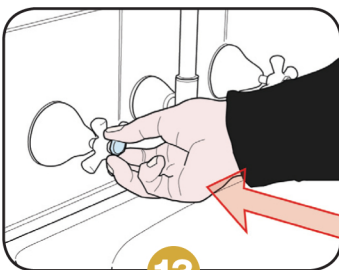
Using adjustable spanner
on the brass flat spots,
tighten the XValve



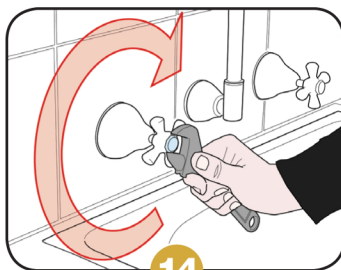
Using the tube spanner, tighten
down the lock nut. Turn on the
water to make sure there are no
drips at the base. Tighten the
spindle if it is dripping.



Replace the cover



Replace the handle and
button



Tighten the button

Code No: XV96638