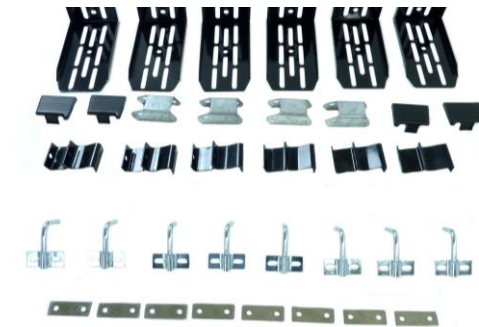


DIRECT4x4

X04 Aluminium Roof Rack Fitting Instructions

1: Parts List

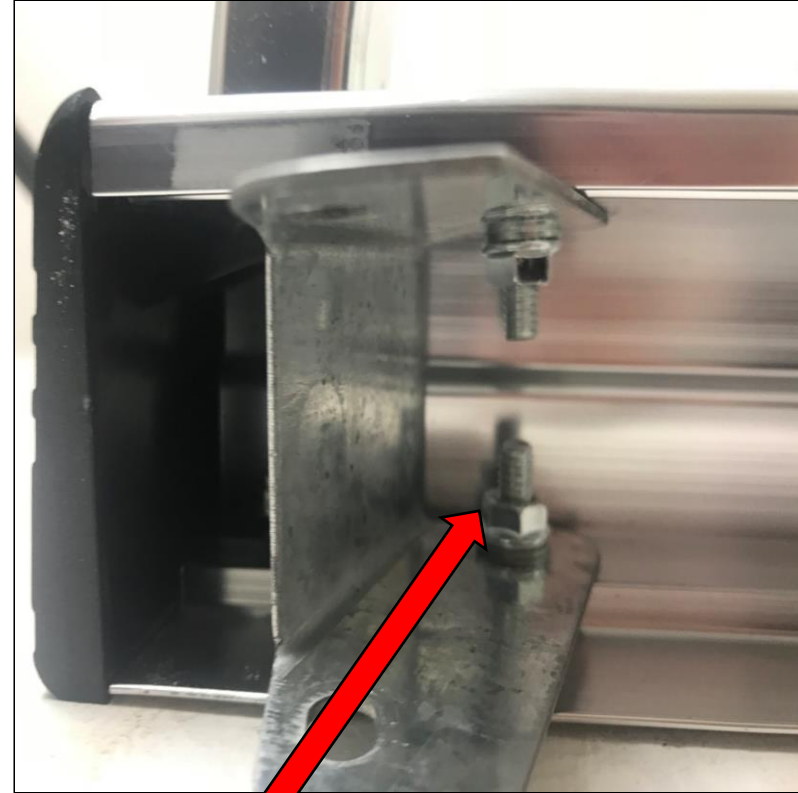
Part Name	Quantity
Side Rails	2
End Rails	2
End Bars	2
Middle Connector Bar	1
Middle Off-Set Connector Bars	2
Bed Rails	5
Corner Brackets	4
Side Rail End Caps	4
L-Brackets	6
Small Hex Bolts	109
Small Washers	89
Plate Washers	8
Tie Down Hooks	8
Gutter Clamps	6
Threaded L-Shape Bar	6
Self Tapping Screw	4
Small Grip Nuts	90
Nylock Nuts	6



Please ensure that you have received all of the components listed above before fitting. If you believe there is anything missing, contact us for assistance.

2: Assembling the Roof Rack

Start by fitting the side bar end caps. They are held in by a clip and a self-tapping screw, be sure to use the supplied washers to protect the rail.



Now loosely fit the corner brackets to the side rails using the hex head bolts, small washers and grip nuts. Make sure you do not tighten them down yet as this will make connecting the two sides easier. Make sure that the bracket is correctly oriented with the longer end facing away from the side.

3: Assembling the Roof Rack

Using the pre-fitted rivet nuts, connect the end bars at either end of one side rail. You will also need to attach **ONE** end rail, the other end will be attached once the bed rails are fitted.



Now attach the middle connector bar to the side rail you are working on; you will need to use two hex head bolts and grip nuts to do this.

4: Assembling the Roof Rack

Now fit both off-set connector bars. These use three hex head bolts and grip nuts, two on the top and one on the bottom of the bar. Once these are fitted, attach the other side rail to the assembly but leave the other end rail off for now.



With all the sections added, you should now locate the bed rails and bolt them down using the hex head bolts and grip nuts. You may need to drill out the holes in one of the off-set rails to get all the bolts to line up. Once this has been done you can attach the final end rail to complete the basket.

5: Fitting the Brackets

Before fitting the brackets we recommend that you fit the tie down hooks to the side rails with hex head bolts. Once they are fitted, position the L-brackets so that you can get two bolts into the rivet nuts on the outer edge, and use the plate washers and hex head bolts to attach the brackets on the inner edge.



Now you need to attach the gutter clamp to the bracket and fit it to your vehicle. To do this use the L-shaped threaded bar on the clamp plate and hook it into the centre hole at the top of the bracket and adjust the clamp to your vehicle, then use the Nyloc nuts to tighten the clamps down.

General Care & Maintenance

IMPORTANT!

We strongly advise you check the fixings at several intervals after the initial fitting to ensure safety. After 7 days, check and tighten any bolts and we recommend inspecting the bolts, brackets and boards at least once every 6 months.

Cleaning Information

You can use most cleaning products on this roof rack. However, we strongly advise against using petrol based solutions or corrosive cleaning solutions which include TFR (Traffic Film Remover) or similar chemicals (brake strippers etc.) These will tarnish and possibly even corrode parts of the rack.

When cleaning underneath the roof rack, be mindful of any protruding bolts or sharp edges, especially at the ends of the brackets.

To increase the lifespan of your new roof rack, we recommend occasionally cleaning the actual brackets.