

Renault Kadjar
Running Boards / Side Steps
Fitting Guide

The logo for DIRECT4x4 features the word "DIRECT" in a bold, black, sans-serif font. The "4x4" portion is rendered in a vibrant green color. The letter "D" is stylized with a thick, curved arrow that starts at the bottom left and points upwards and to the right, following the top curve of the letter.

DIRECT4x4

1: Parts List

Part Name	Quantity
Running Board	2
Front Bracket	2
Rear Bracket	2
T Bolt	10
Washers	20
Nuts	10



Please check all of the fixings you have received.

If you think you are missing any of the components in the list above, please contact Direct 4x4 for further advice.

2: Fitting The Brackets

2.1: The Front Brackets



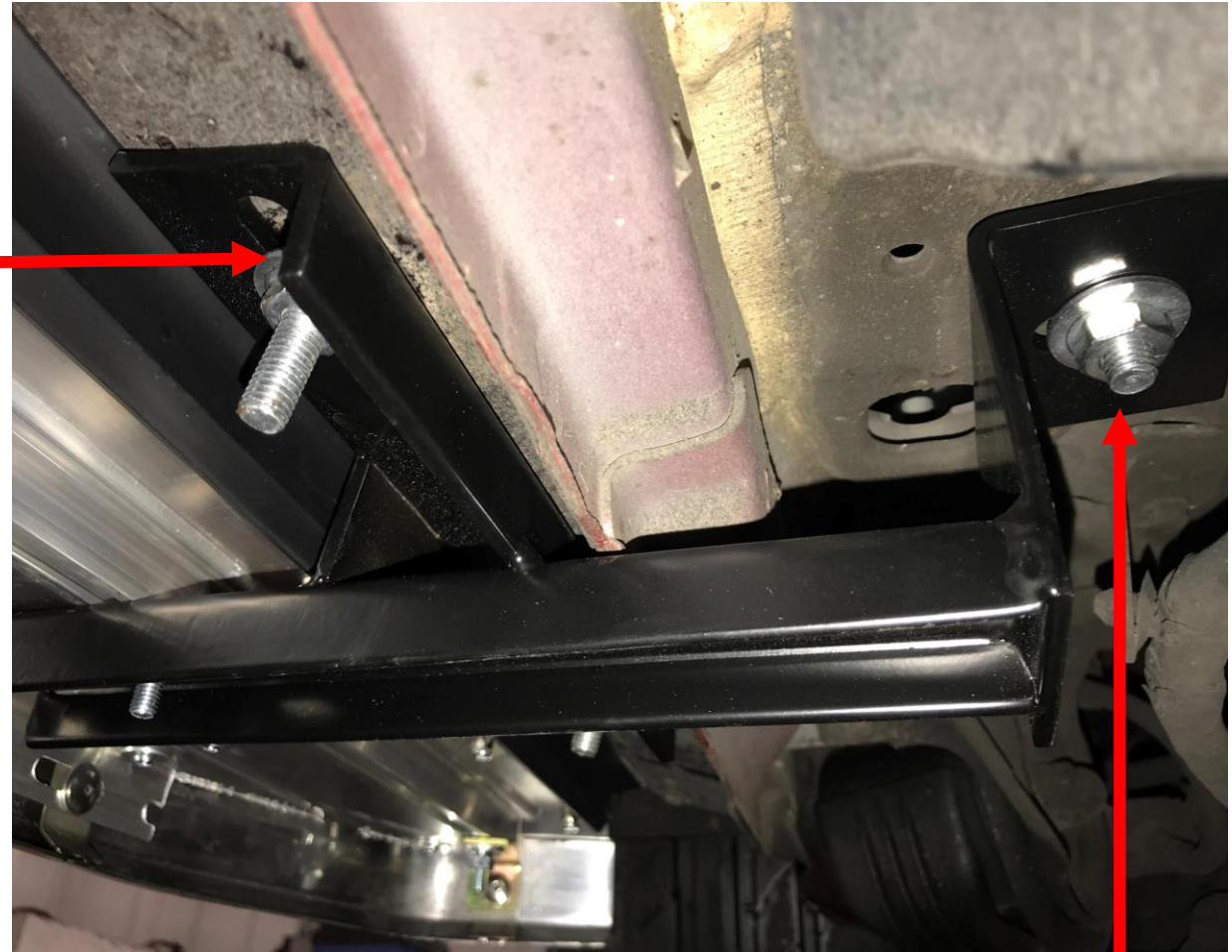
The front brackets are fitted by taking out the bung in the sill and fitting the t- bolt.



The rear of front brackets are fitted by re-using this bolt in the chassis this may be different (on some models of side steps) please see the fitting video for more information.

2.3: The Rear Brackets Fitting Locations

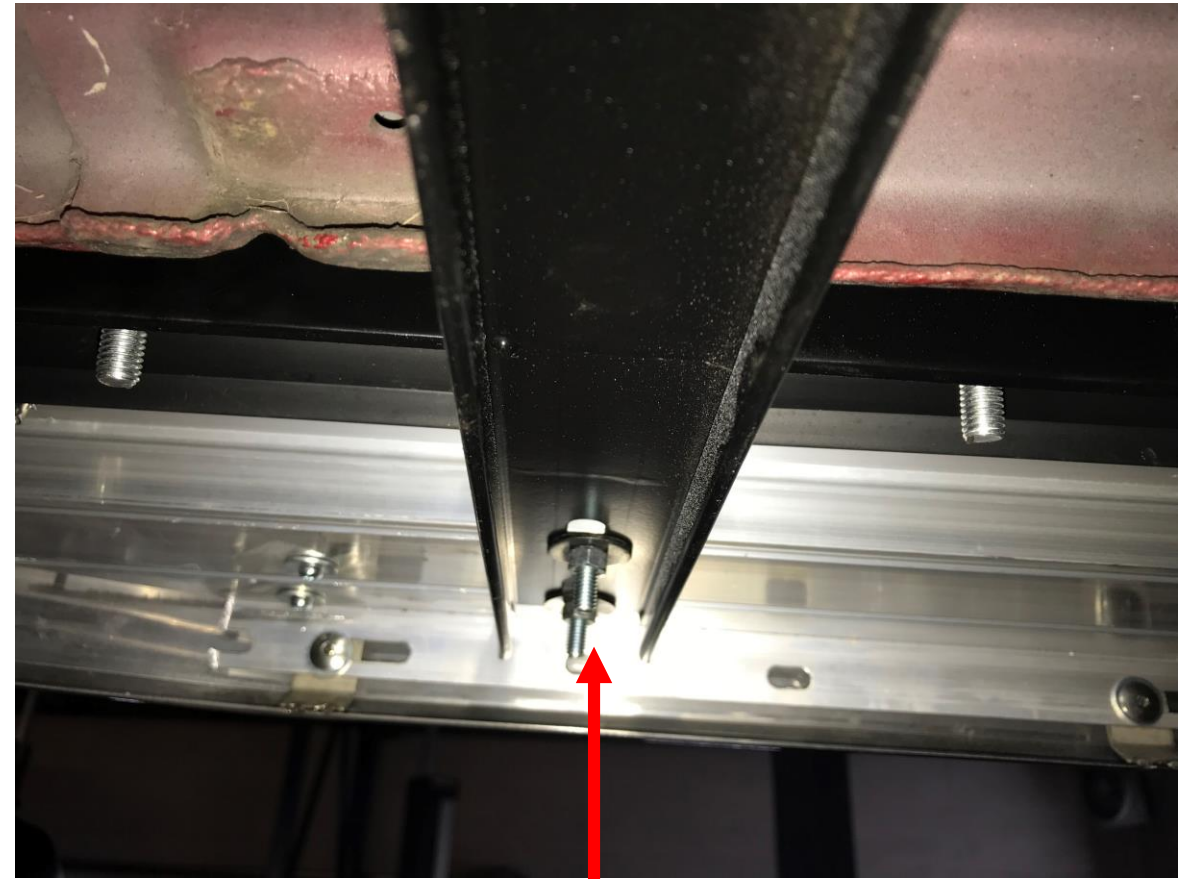
Remove the rubber bungs from the sill then fit the T-bolt in place, (TIP leave slightly loose so the steps can be fitted with ease)



To fit the rear bracket take out the rubber bung in the chassis and fit the T-bolt.

3: Fitting the Boards.

We recommend that you place the rubber seal behind the sill. Not only does this look better, but it also reduces the muck and dirt getting through, giving you a cleaner car.



You will need to loosen the 6 bolts on the board and move these down the channel to the bracket. Once the holes are lined up, place the board on the brackets at a 45° angle to allow the board to slip under the sill before pressing the front down.

General care and maintenance

Cleaning:

You can use most cleaning products on the steps. We do advise that you avoid any corrosive cleaning solutions. These may include TFR or similar (brake stripping/cleaning) chemicals, or petrol based solutions (showroom shine or similar). These will tarnish or corrode parts of the steps.

When cleaning under the steps, be mindful of any sharp edges at the ends where the aluminium box section finishes.

To maintain the life of the steps, we advise you occasionally clean the brackets (or what part of the brackets you can access).

Maintenance:

We advise you to check under the car at several intervals after the initial fitting.

- 1 Week – Check and tighten any bolts after the 1st week of use
- 6 Months – It is advantageous to check the bolts after this period.