

Porsche Macan
Running Boards / Side Steps
Fitting Guide

DIRECT4x4

1: Parts List

Part Name	Quantity
Running Board	2
Front Bracket	2
Middle Bracket	2
Rear Bracket	2
Large T-Bolt	4
Small T-Bolt	6
Large Washer	4
Small Washer	6
Large Nut	4
Small Nut	6



Please check all of the fixings you have received.

If you think you are missing any of the components in the list above, please contact Direct4x4 for further advice.

2: Fitting the brackets.

2.1: The Front brackets.

You will need to remove the undertrays off the vehicle before fitting the brackets.

The photo below is the bracket fitted to the passenger side, however the fitment is the same for both the drivers and passengers side.

Here there will be a rubber grommet that you need to remove, this allows the T bolt access into the hole in the chassis.

Locate this fixing point in your chassis and slot the T bolt supplied into the hole for the bracket to fit.



2.2: The Rear brackets.

Using your T-bolt, slot it into the chassis hole shown and attach the bracket.

To locate this fixing point you will need to remove a rubber grommet so that you can slot the T bolt into the chassis hole.



2.3: The Middle brackets.

When fitting the middle brackets, this is the rubber grommet that you need to remove in order for them to fit.

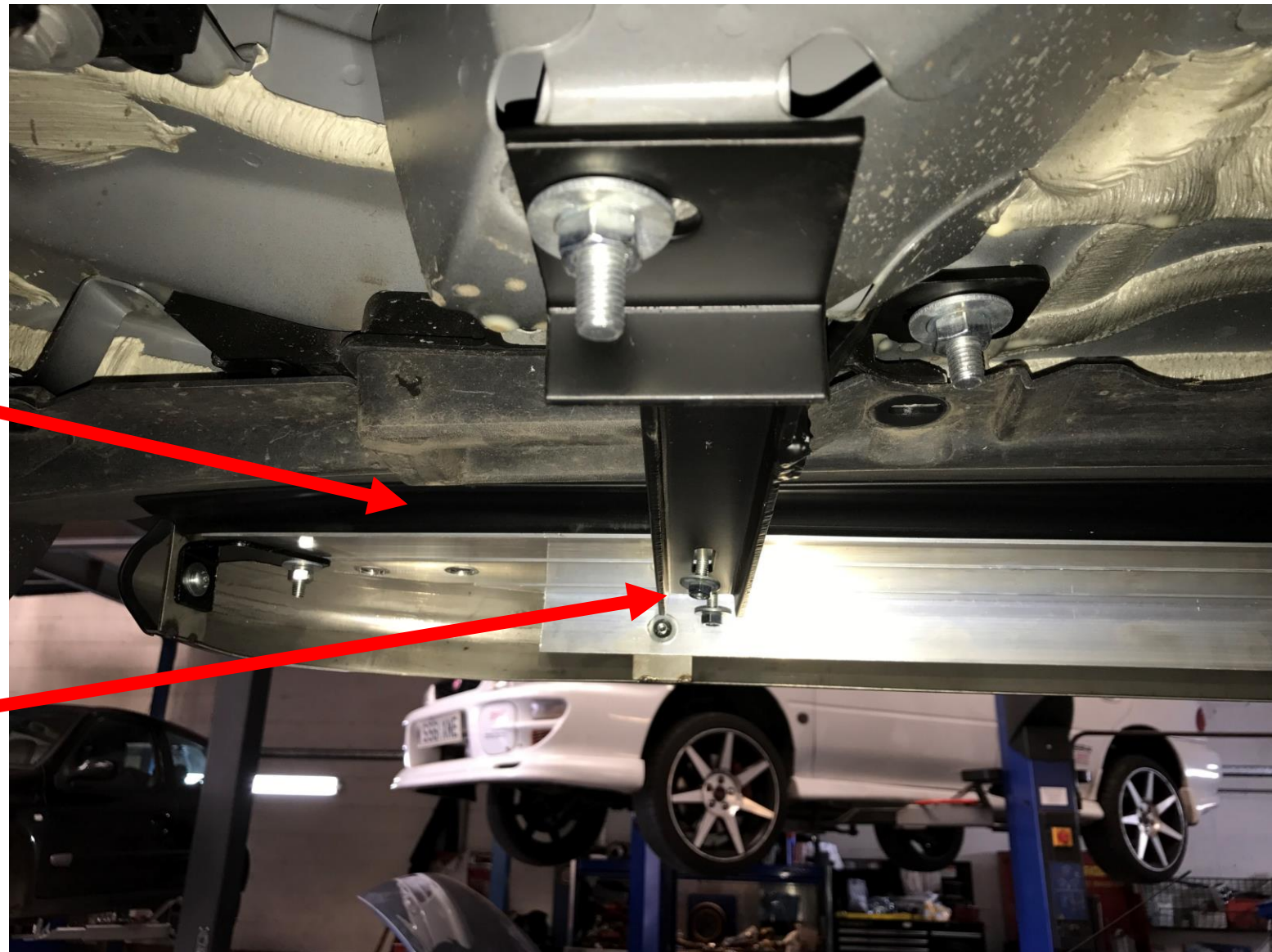


After you have removed the rubber grommet, slot your T-bolt into the hole in the chassis as shown.

3: Fitting the boards.

We recommend that you place the rubber seal behind the sill. Not only does this look better, but it also reduces the muck and dirt getting through, giving you a cleaner car.

You will need to loosen the 6 bolts on the board and move these down the channel to the bracket. Once the holes are lined up, place the board on the brackets at a 45° angle to allow the board to slip under the sill before pressing the front down.



General care and maintenance

Cleaning:

You can use most cleaning products on the steps. We do advise that you avoid any corrosive cleaning solutions. These may include TFR or similar (brake stripping/ cleaning) chemicals, or petrol based solutions (showroom shine or similar). These will tarnish or corrode parts of the steps.

When cleaning under the steps, be mindful of any sharp edges at the ends where the aluminium box section finishes.

To maintain the life of the steps, we advise you occasionally clean the brackets (or what part of the brackets you can access).

Maintenance:

We advise you to check under the car at several intervals after the initial fitting.

1 Week – Check and tighten any bolts after the 1st week of use

6 Months – It is advantageous to check the bolts after this period.