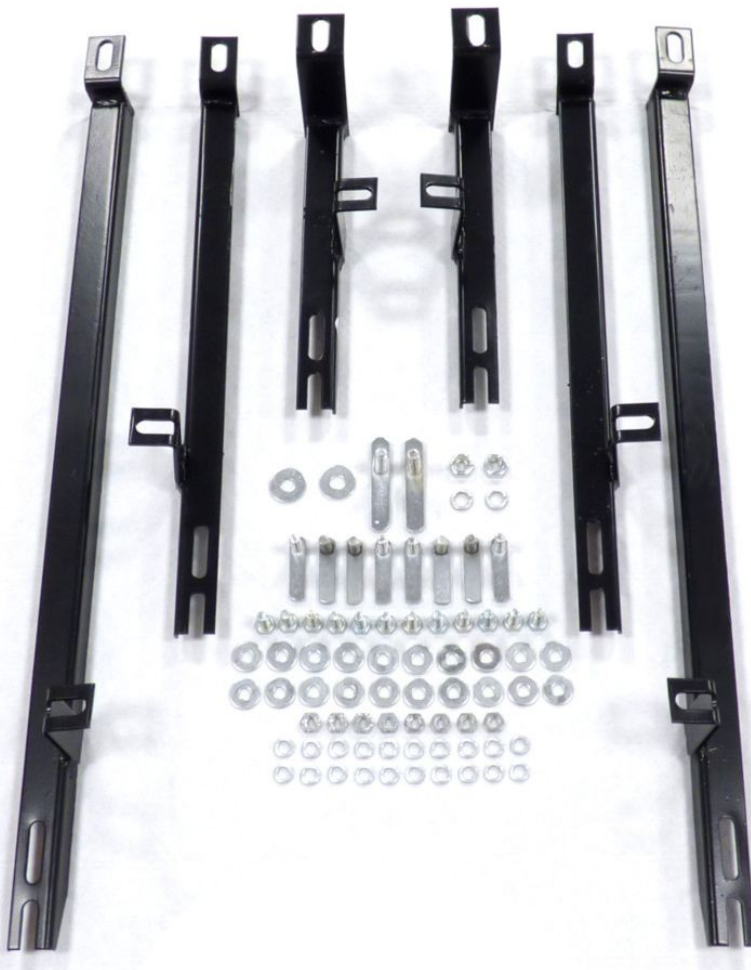


Fitting Guide for the Nissan X-Trail 2014 onwards model.

Please check all the fixings before you start fitting the side steps.

Name	Quantity
Front Bracket	2
Middle Bracket	2
Rear Bracket	2
8mm T-Bolts + Fixings	8
12mm T-Bolt + Fixings	2
8mm Hex Bolts + Fixings	12



If you think that you are missing any of the components in the list above, please contact Direct4x4 for further advice.

Torque Settings:

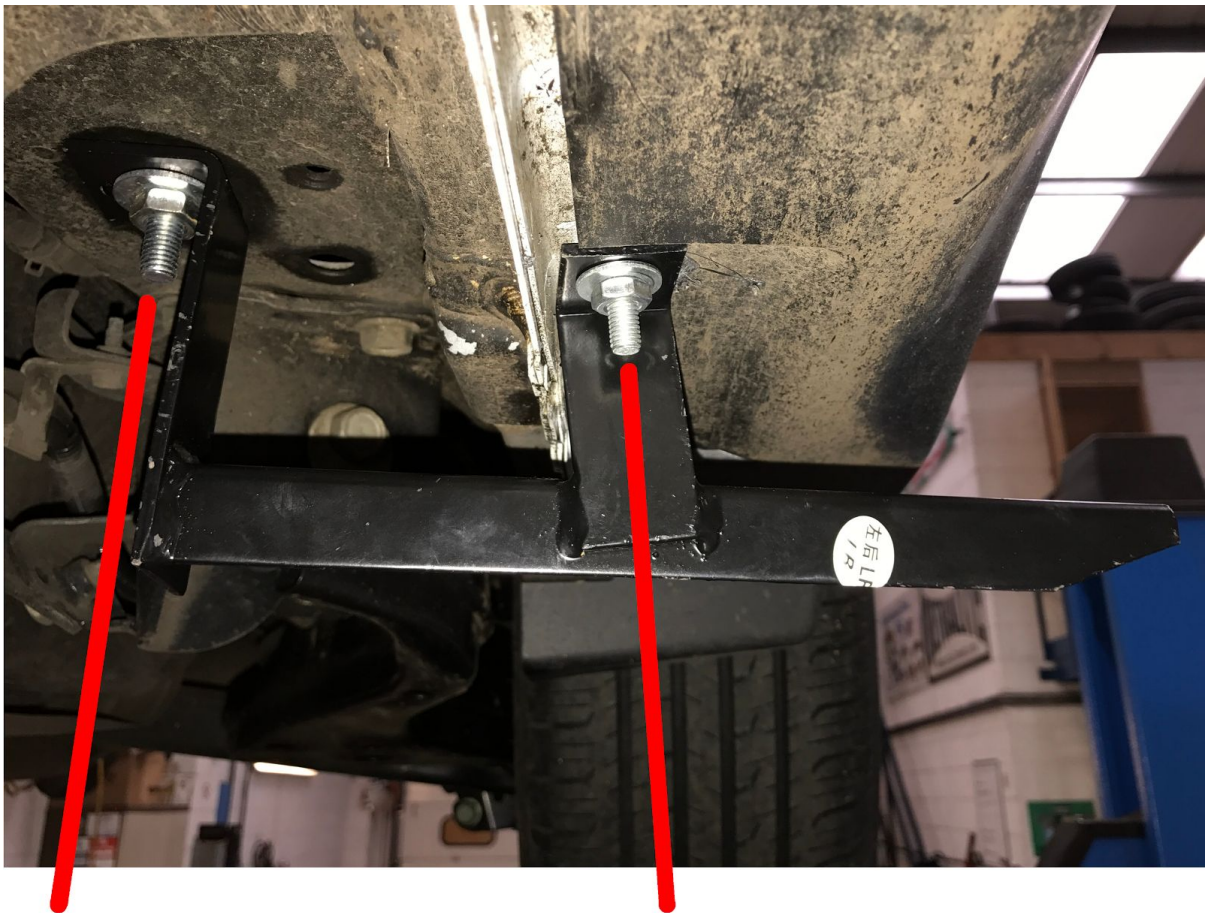
8mm bolts - 20Nm

10mm bolts - 40Nm

Step 1: Get the vehicle up on the ramps (if possible)

Step 2: Rear Brackets

The photo below shows the bracket fitted on the passenger side. The fitment is the same for both driver and passenger sides.



You will need to remove the grommit from the chassis to allow access to the hole. This reveals the hole where you will insert an 8mm T-Bolt.

You will need to drill a small hole in the sill cover to allow the T-Bolt to fit in the hole in the sill.

Step 3: Middle Brackets

The photo below shows the bracket fitted on the passenger side. The fitment is the same for both driver and passenger sides.



You will need to drill a small hole in the sill cover to allow the T-Bolt to fit in the hole in the sill.

You will need to remove the grommit from the chassis To allow access to the hole. This reveals the hole where You will insert an 8mm T-Bolt.

Step 4: Front Brackets



You will need to remove the grommit from the chassis To allow access to the hole. This reveals the hole where You will insert an 8mm T-Bolt.

You will need to drill a small hole in the sill cover to allow the T-Bolt to fit in the hole in the sill.

Step 5: Loosen the bolts on the underside of the side steps and line them up with the bracket holes.

Step 6: After placing the steps onto the bracket, tighten up all of the bolts.

Step 7: Take your X-Trail off the ramps and enjoy your brand new side steps.