

DIRECT4x4

Mitsubishi Outlander PHEV 2012 onwards (After Market) Side Step Fitting Guide

1: Parts List

Part Name	Quantity
Side Steps	2
Front Brackets	2
Middle Brackets	2
Rear Brackets	2
T-Bolts	4
Trapped Flat Bar	4
Large Bolts	12
Small Bolts	2
Large Washers	4
Washers	12
Spring Washers	16
Nuts	16
Sill Brackets	6



Please ensure that you have received all of the components listed above before fitting. If you believe there is anything missing, contact us for assistance.

2: Fitting the Brackets (FRONT)

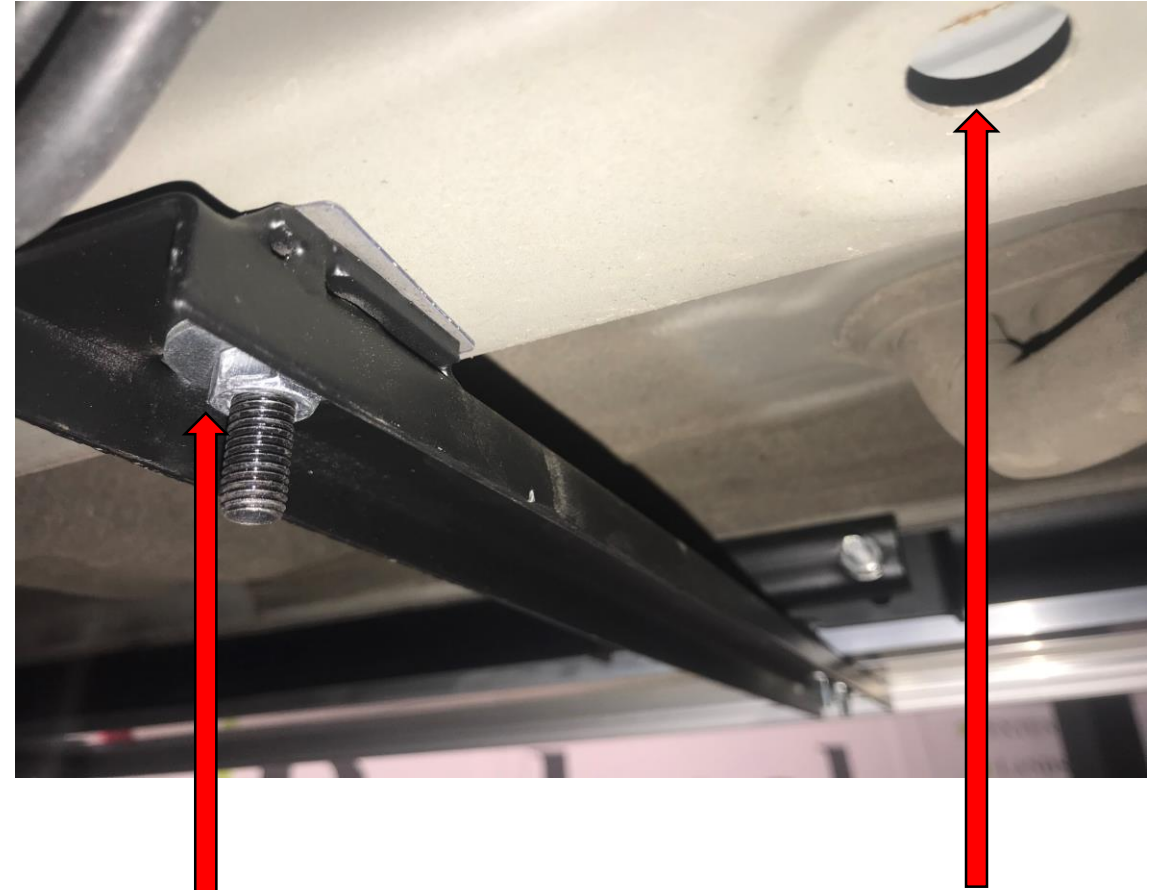
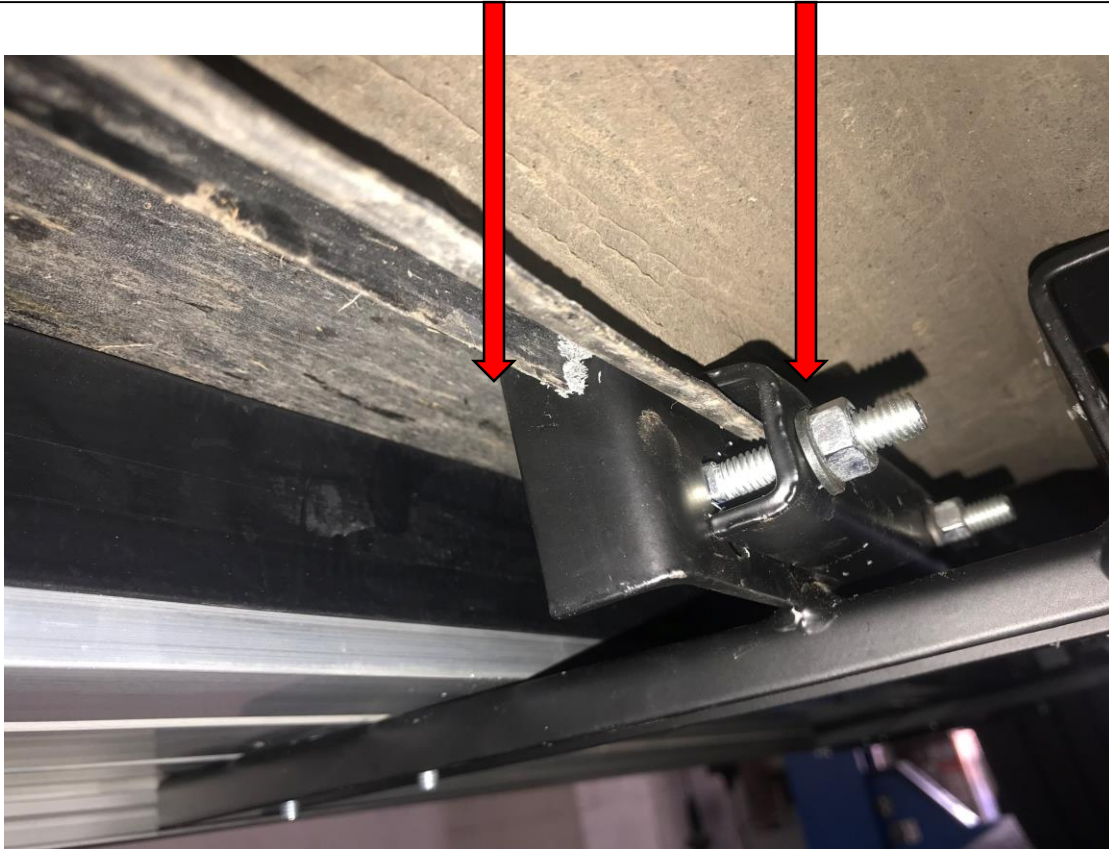
Remove the grommet in the chassis then feed through the T-bolt and then hand tighten.



Place the bracket at the front of the sill then put the clamp in place over the lip of the sill to securely fit in place.

3: Fitting the Brackets (MIDDLE)

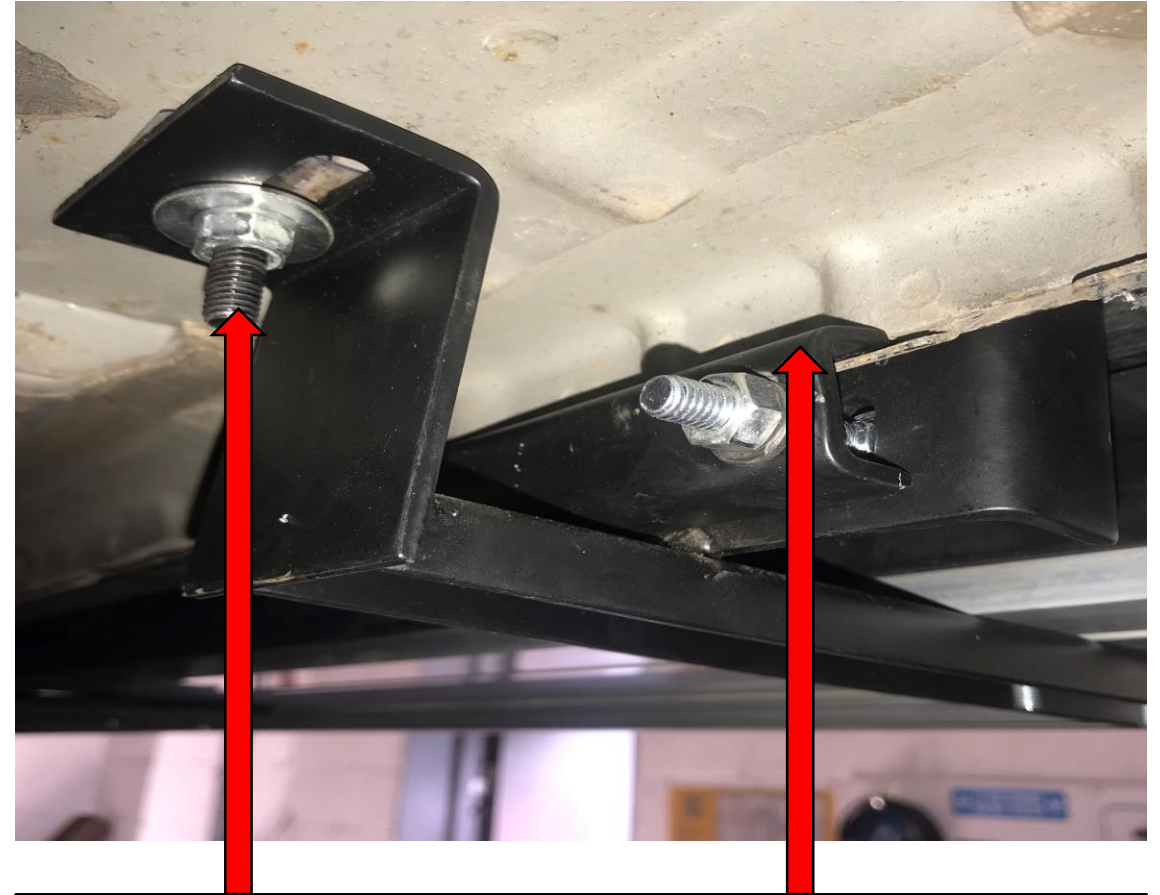
The T part of the bracket fits toward the front of the sill, the clamp then goes to the back over the lip of the sill to hold the bracket firmly in place. There is no hole for a T-bolt on the drivers side.



To fit the bracket, place the T-bolt in the hole in the chassis. There are a number of these along the car chassis on the nearside.

4: Fitting the Brackets (REAR)

On the rear brackets again place the T-bolt into the hole in the chassis and the welded part of the bracket at the front of the sill. Clamp along the lip on the sill using the bracket provided to hold firmly in place.



Remove the bung in the chassis on the off side at the rear of the vehicle, again place the T-bolt into the hole in the chassis and the welded part of the bracket at the front of the sill, clamp along the lip on the sill using the bracket provided to hold firmly in place.

5: Fitting the Brackets (EXTRA)

The rubber on the step is best fitted at the rear of the sill as this will keep the side steps cleaner for longer giving you a cleaner car.



Once the brackets are in place slide the bolts along the side steps to fit each step. Place at 45 degrees to make sure rubber goes to the back of the sill, press down and firmly fix in place on each bracket.

General Care & Maintenance

!IMPORTANT!

We strongly advise you check under the car at several intervals after the initial fitting to ensure safety. After 7 days, check and tighten any bolts and we recommend inspecting the bolts, brackets and boards at least once every 6 months.

Cleaning Information

You can use most cleaning on these side steps. However, we strongly advise against using petrol based solutions or corrosive cleaning solutions which include TFR (Traffic Film Remover) or similar chemicals (brake strippers etc.) These will tarnish and possibly even corrode parts of the steps.

When cleaning underneath the side steps, be mindful of any protruding bolts or sharp edges, especially at the ends of the boards.

To increase the lifespan of your new side steps, we recommend occasionally cleaning the actual brackets.