

Mercedes-Benz ML (W166) 2012 onwards
Running Boards / Side Steps
Fitting Guide

The logo for DIRECT4x4 features the word "DIRECT" in a bold, dark grey sans-serif font. The "4x4" portion is rendered in a vibrant green color. The letter "D" is stylized with a green arrow that curves from the bottom of the letter and points back towards the top of the "D".

DIRECT4x4

1: Parts List

Part Name	Quantity
Running Board	2
Front Bracket (Inner)	2
Front Bracket (Outer)	2
Rear Bracket (Inner)	2
Rear Bracket (Outer)	2
Large T-Bolt	4
Large Bolt	8
Large Washer	10
Large Spring Washer	10
Large Nut	12



Please check all of the fixings you have received.

If you think you are missing any of the components in the list above, please contact Direct 4x4 for further advice.

1: Removing the jacking Points.



Tip: If you need Further assistance, you can look at our fitting video on YouTube to see how to remove the trays.

2: Fitting the brackets.

2.1: The Front Brackets

You will need to lower the sill cover to gain access to the fitting hole.

Remove the jacking points in the chassis to expose the fitting hole. The Large T-Bolt then slots inside.

The sill cover will need to be trimmed around the bracket to allow it to be refitted.

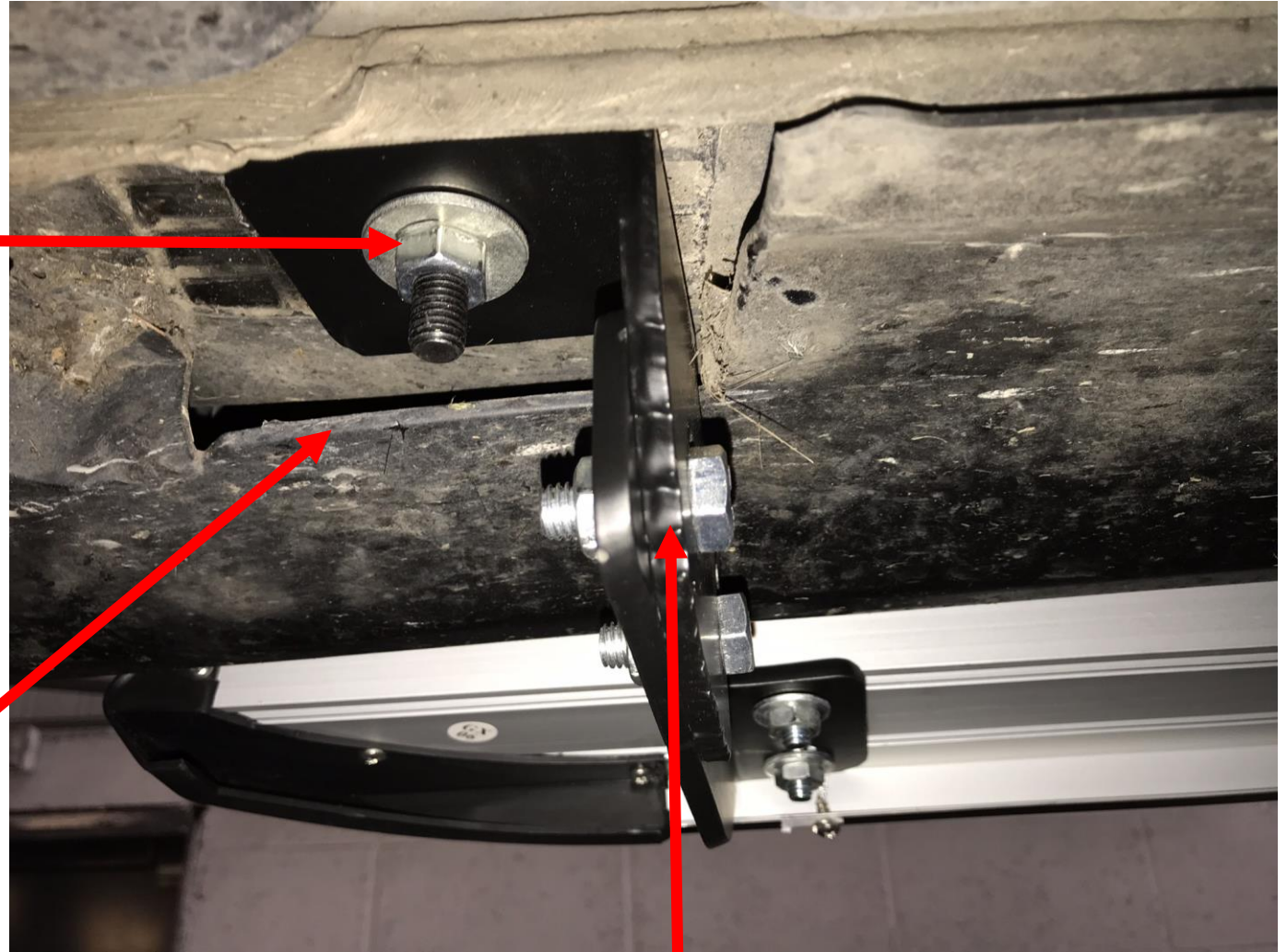
The brackets come in 2 sections that need to be bolted together. You will have to adjust the brackets to correct the fit to your taste.



2: Fitting the brackets.

2.2: The Rear Brackets

The large T-Bolt fits into the hole in the chassis. You will need to remove the jacking point to access it.

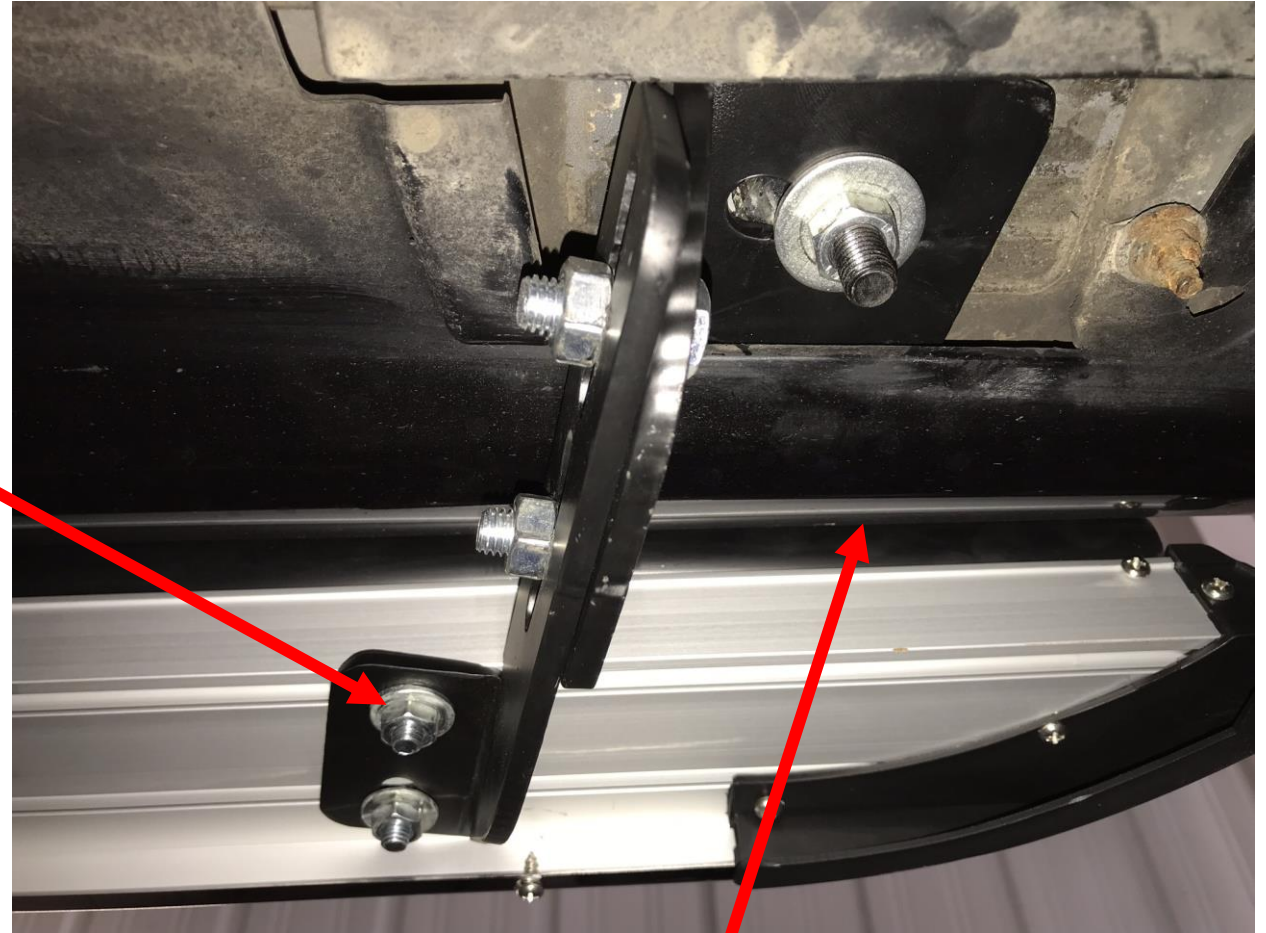


The sill cover will need to be trimmed around the bracket to allow it to be refitted.

The bracket comes in 2 sections that need to be bolted together. These can be adjusted to suit you.

3: Fitting the Boards.

You will need to loosen the bolts and the board and move these down the channel to the bracket. Once the holes are lined up, place the board on the brackets at a 90° angle to allow the board to slip under the sill before pressing the front down.



We recommend that you place the rubber seal behind the sill, not only does this look better, but it also reduces the muck and dirt getting through giving you a cleaner car.

General care and maintenance

Cleaning:

You can use most cleaning products on the steps. We do advise that you avoid any corrosive cleaning solutions. These may include TFR or similar (brake stripping/cleaning) chemicals, or petrol based solutions (showroom shine or similar). They will tarnish or corrode parts of the steps.

When cleaning under the steps, be mindful of any sharp edges at the ends where the aluminium box section finishes.

To maintain the life of the steps, we advise you occasionally clean the brackets (or what part of the brackets you can access).

Maintenance:

We advise you to check under the car at several intervals after the initial fitting.

- 1 Week – Check and tighten any bolts after the 1st week of use
- 6 Months – It is advantageous to check the bolts after this period.