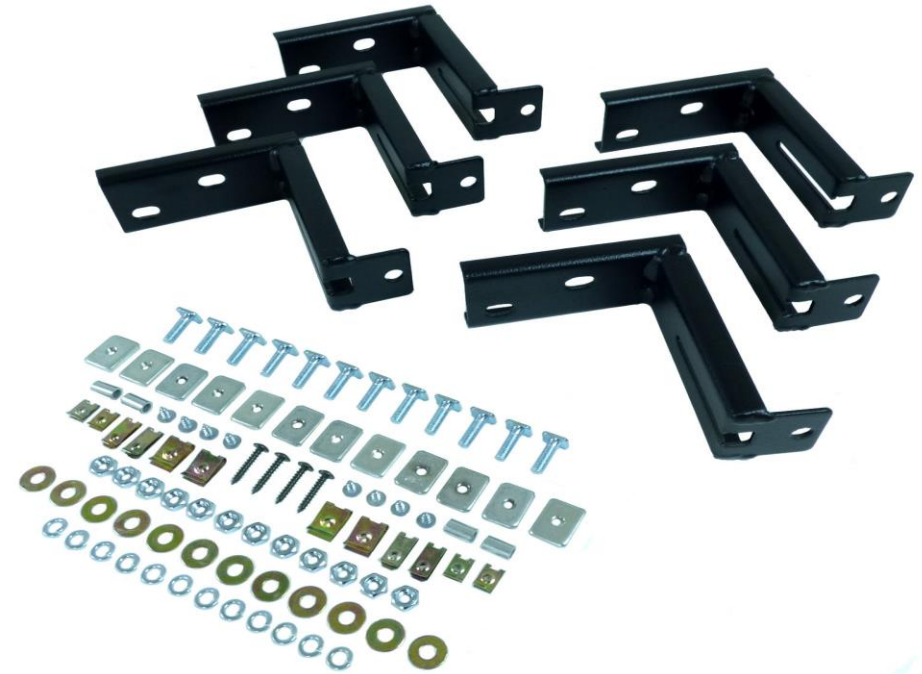


DIRECT4x4

Mercedes G Wagen OE Style Side Step Fitting Guide

1: Parts List

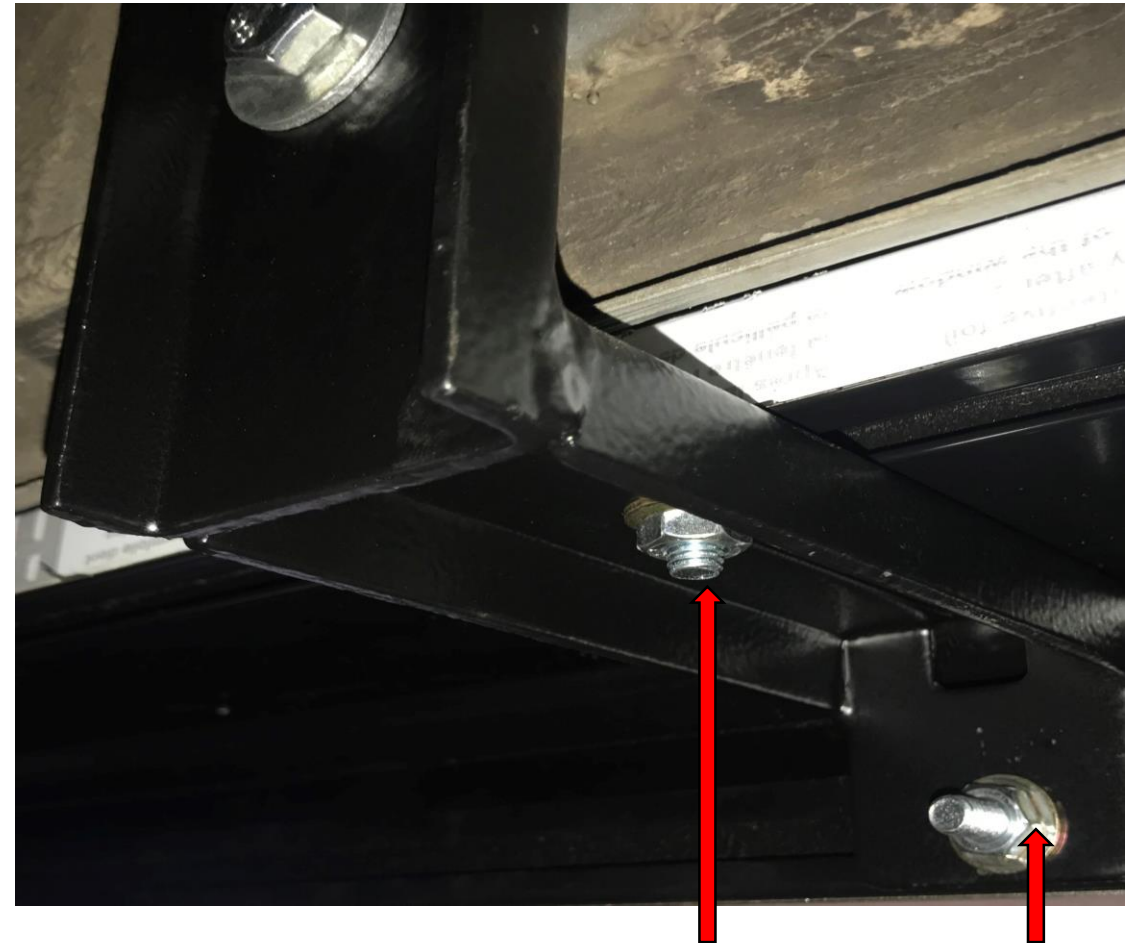
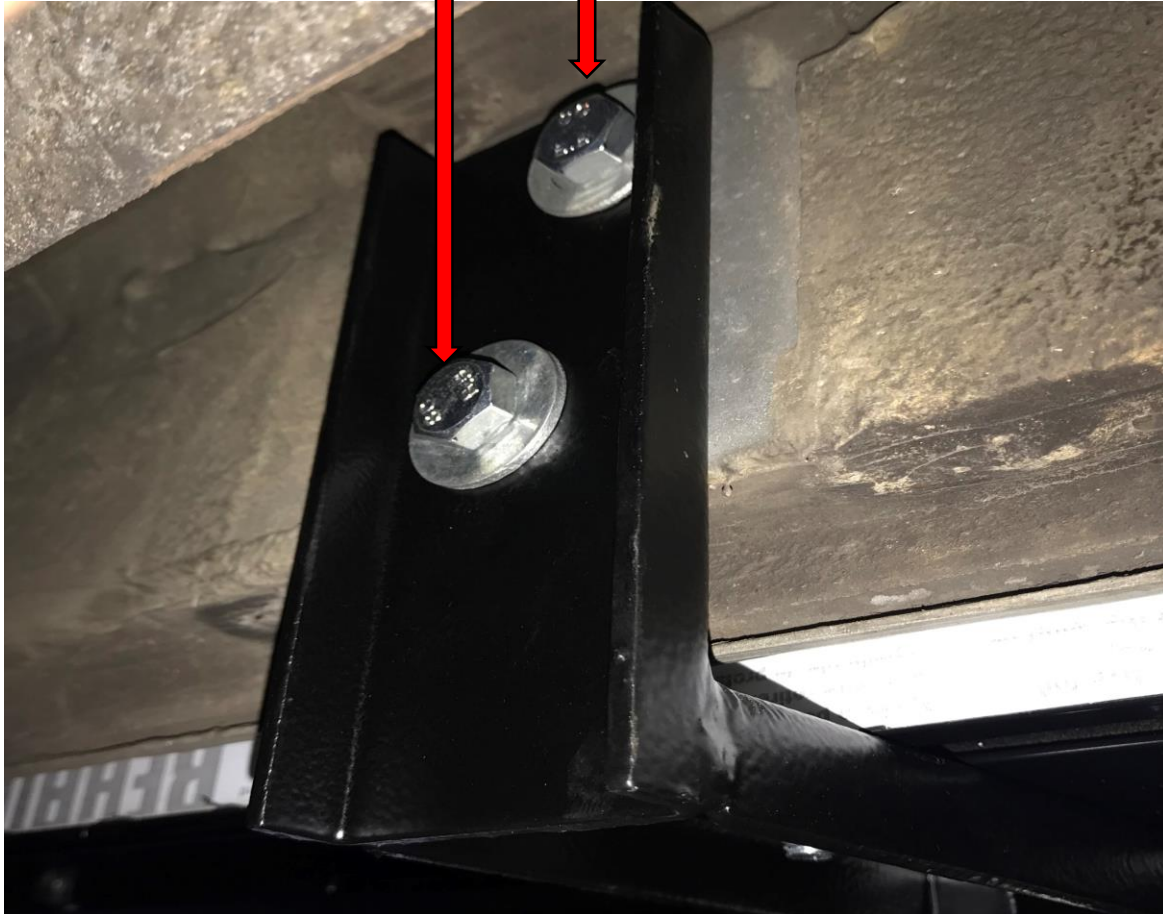
Part Name	Quantity
Side Steps/Running Boards	2
Front Brackets	2
Middle Brackets	2
Rear Brackets	2
Step Bolts	12
Spacers	12
Tube Spacers	4
Small Screws	8
Large Screws	4
Various Screw Clips	12
Nuts	12
Washers	12
Spring Washers	12



Please ensure that you have received all of the components listed above before fitting. If you believe there is anything missing, contact us for assistance.

2: Fitting the Brackets (FRONT)

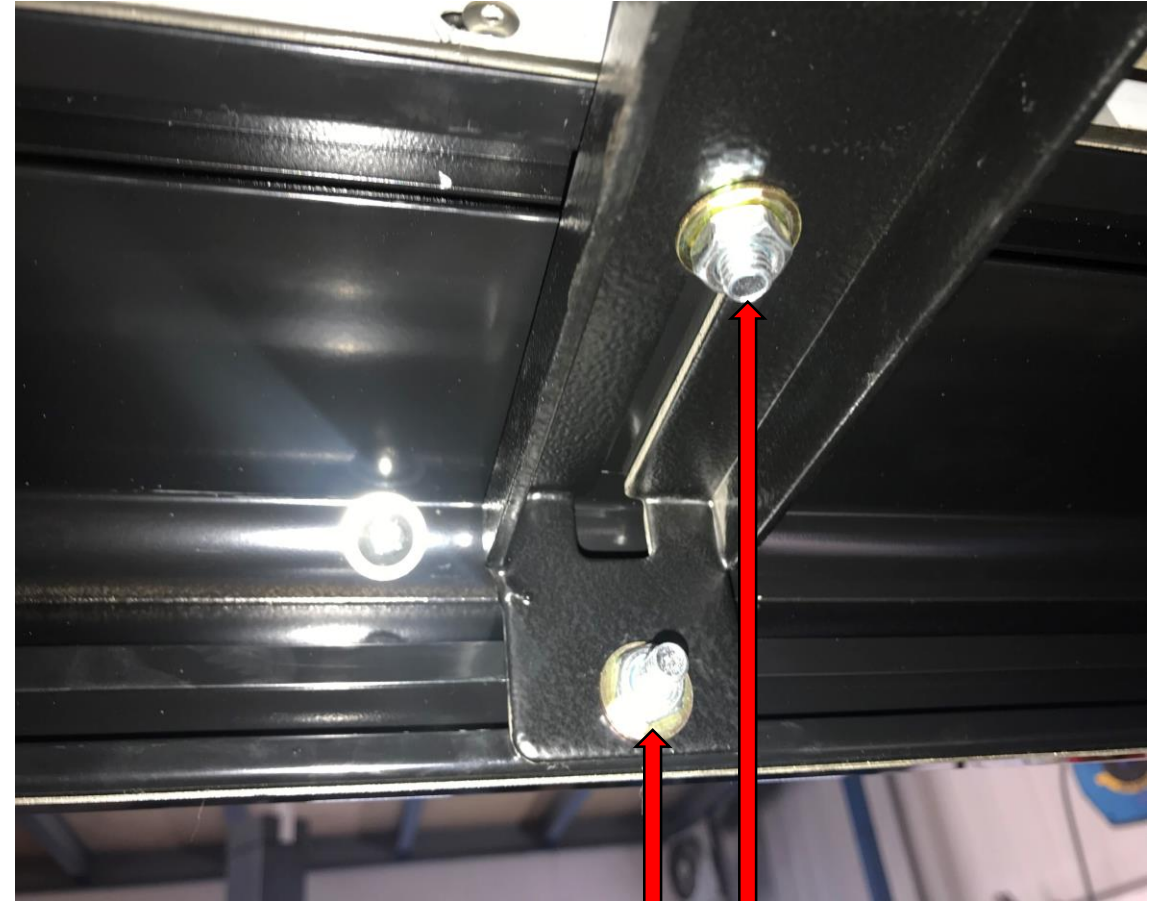
To fit the front brackets First remove the existing bolts in the sill that look like this, then re use to fix the bracket in place.



Slide the bolts along the channel on the step to where they fit on the bracket, but do not fix in place yet until all three brackets are secure on the vehicle.

3: Fitting the Brackets (MIDDLE)

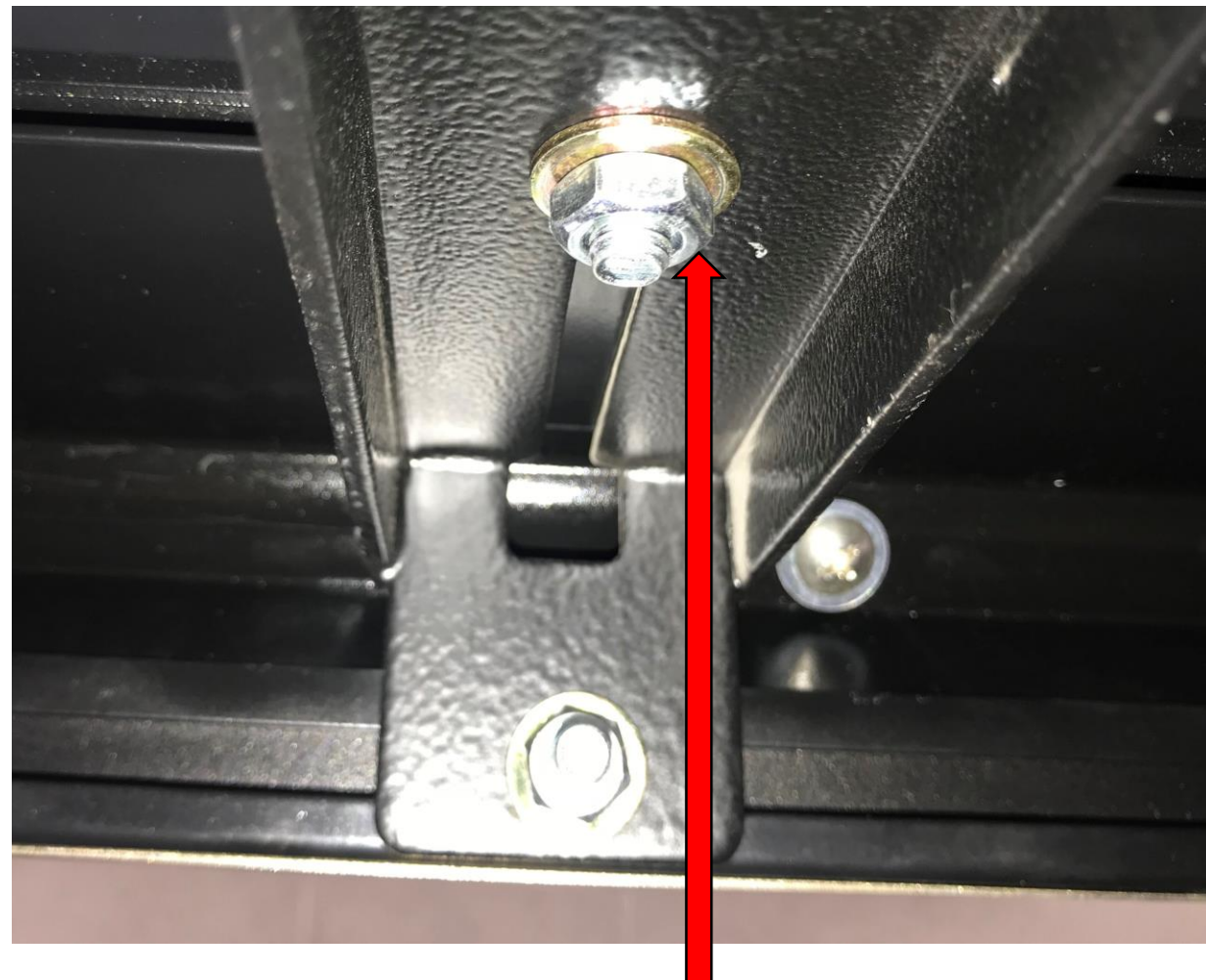
To fit the middle brackets First remove the existing bolts in the sill again as on page two. Then re use to fix the bracket in place.



Slide the bolts along the channel on the step to where they fit on the bracket, but do not fix in place yet until all three brackets are secure on the vehicle.

4: Fitting the Brackets (REAR)

This is the same as in step two and three.



Slide the bolts along the channel on the step, once all three brackets are secure on the vehicle fit the boards to them using the bolts provided.

General Care & Maintenance

!IMPORTANT!

We strongly advise you check under the car at several intervals after the initial fitting to ensure safety. After 7 days, check and tighten any bolts and we recommend inspecting the bolts, brackets and boards at least once every 6 months.

Cleaning Information

You can use most cleaning on these side steps. However, we strongly advise against using petrol based solutions or corrosive cleaning solutions which include TFR (Traffic Film Remover) or similar chemicals (brake strippers etc.) These will tarnish and possibly even corrode parts of the steps.

When cleaning underneath the side steps, be mindful of any protruding bolts or sharp edges, especially at the ends of the boards.

To increase the lifespan of your new side steps, we recommend occasionally cleaning the actual brackets.