

DIRECT4x4

Lexus RX450H 2009 Onwards After Market Side Step Fitting Guide

2: Fitting the Brackets (FRONT)

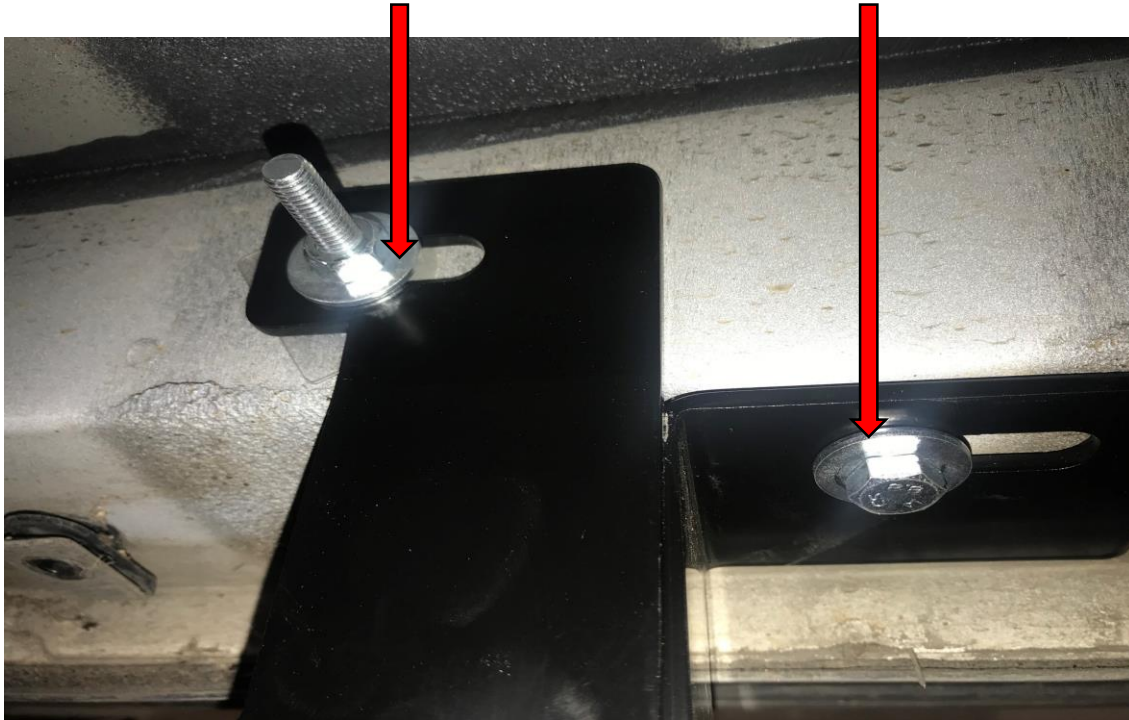
After removing the undertrays you will find a lug/flange on the chassis at the front on both sides of the vehicle, just at the side of that lug/flange remove the bung/grommet in the chassis place one of the captive nuts in this hole and fix in place with the 8mm bolt.



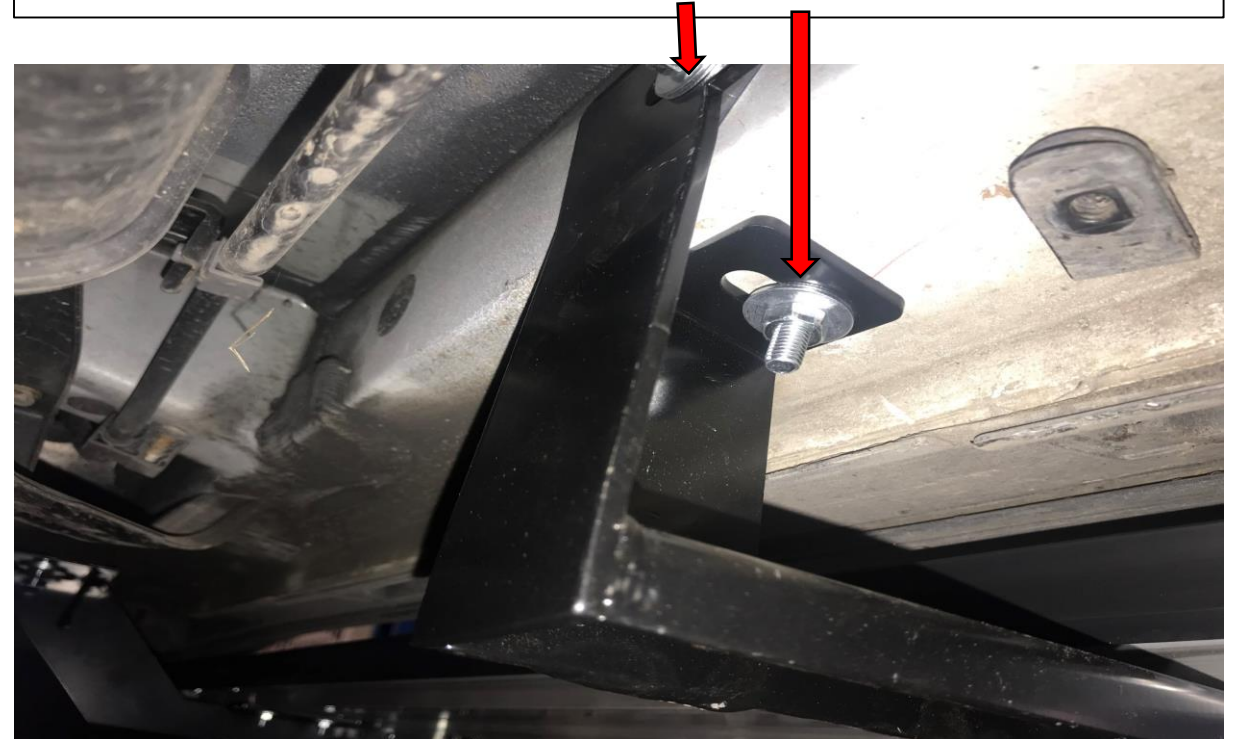
On the front fixing part of the bracket you may need to remove some of the sealant to reveal the hole for the front part to fix to, then place a 6mm T-bolt in this hole. Use the plastic washer to stop this falling into the channel and fix in place.

3: Fitting the Brackets (MIDDLE)

After removing the undertray, the two middle brackets are very different, the picture below is the drivers side bracket, remove the bung /grommet in the chassis place the 6mm T-bolt in the hole with the plastic washer on and hand tighten. The side bolt is already in the chassis undo this bolt and re-use to fit the bracket in place. This is the drivers side.



The passenger's side middle bracket, while looking very different to the driver's side, follows the same principle; remove the bungs/grommets in the chassis and use the 8mm T-bolt plus the plastic washer to stop you losing the T-bolt. Fix the side of the bracket to the sill, and then using the 6mm T-bolt secure the front part of the bracket, again using the plastic washer to hold the T-bolt in place."



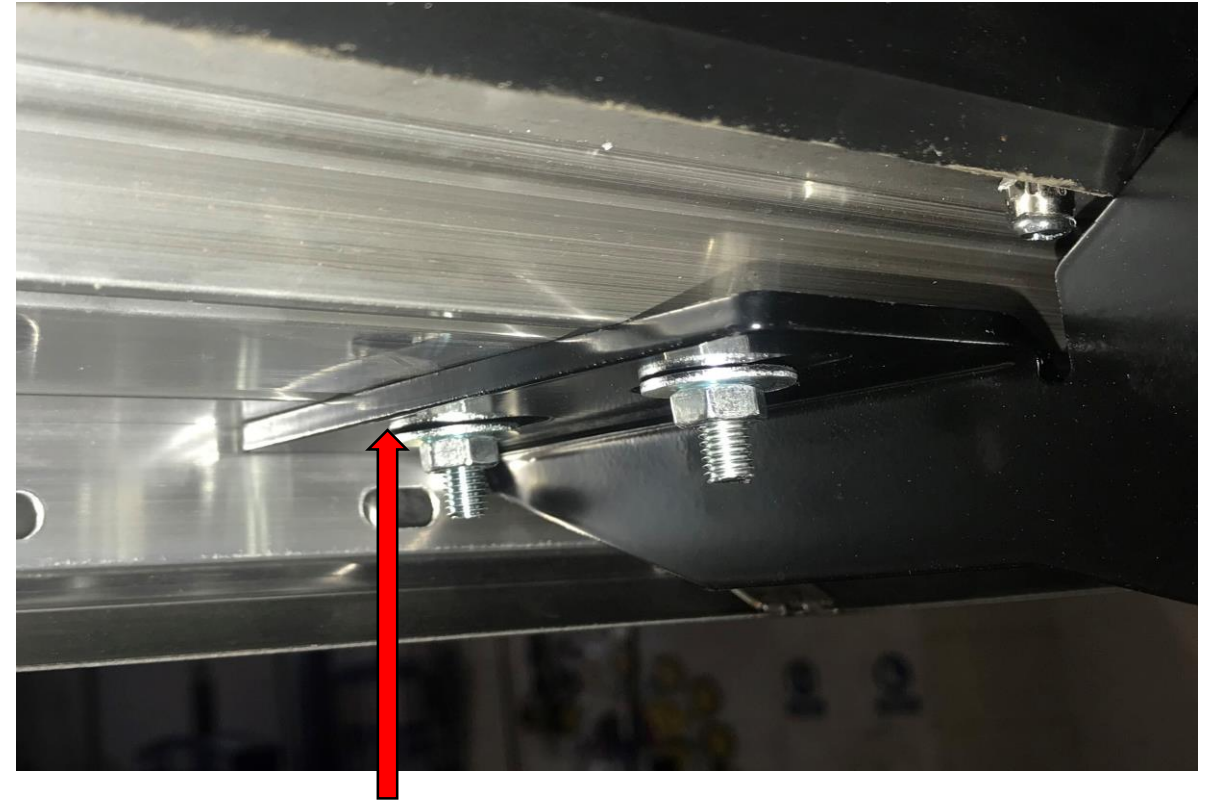
4: Fitting the Brackets (REAR)

After removing the bung/grommet at the rear of the vehicle place the 10mm T-bolt into the hole, remember to put the plastic washer on to stop you loosing the T-bolt in the chassis and then fix firmly in place, this is the same for both sides on the rear of the vehicle.



5: Fitting the Brackets (EXTRA)

We recommend that you place the rubber seal behind the sill. Not only does this look better, but it also reduces the muck and dirt getting through, giving you a cleaner car. (The 'Raptor' board is the only step that does not have a seal at the back of it.)



You will need to loosen the 6 bolts on the board and move these down the channel to the bracket. Once the holes are lined up, place the board on the brackets at a 45° angle to allow the board to slip under the sill before pressing down the full length of the board to fix firmly in place and then tighten the bolts securely.

General Care & Maintenance

!IMPORTANT!

We strongly advise you check under the car at several intervals after the initial fitting to ensure safety. After 7 days, check and tighten any bolts and we recommend inspecting the bolts, brackets and boards at least once every 6 months.

Cleaning Information

You can use most cleaning on these side steps. However, we strongly advise against using petrol based solutions or corrosive cleaning solutions which include TFR (Traffic Film Remover) or similar chemicals (brake strippers etc.) These will tarnish and possibly even corrode parts of the steps.

When cleaning underneath the side steps, be mindful of any protruding bolts or sharp edges, especially at the ends of the boards.

To increase the lifespan of your new side steps, we recommend occasionally cleaning the actual brackets.