

DIRECT4x4

Land Rover Discovery Sport 2015+ Side Steps (After Market) Fitting Instructions

1: Parts List

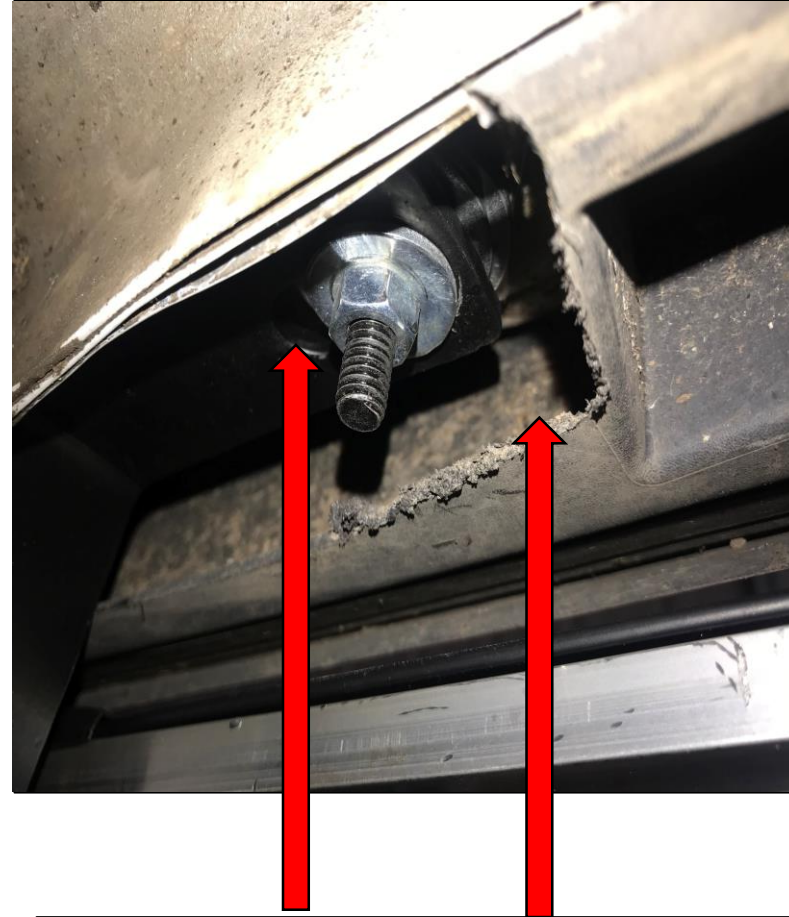
Part Name	Quantity
Side Boards	2
Front Brackets	2
Rear Brackets	2
Large T-Bolts	4
Large Washers	4
Medium T-Bolts	6
Washers	6
Small T-Bolts	2
Small Washers	2
Nuts	12
Spring Washers	12



Please ensure that you have received all of the components listed above before fitting. If you believe there is anything missing, contact us for assistance.

2: Fitting the Brackets (FRONT)

Insert two of your T-bolts into the holes in the chassis as shown. Once the T-bolts are in place, line your bracket up and put the nuts on loosely so you can attach the last fixing.



To fit the third fixing, you must first remove a rubber bung/grommet from behind the plastic sill in the location shown on the picture. After this insert your T-bolt into the exposed fitting hole, line up the bracket and tighten the nuts. You will have to cut the plastic undertray next to the sill using a Dia cutter or small grinder for a neat finish.

4: Fitting the Brackets (REAR)

Insert a T-bolt into the fitting hole shown on the picture, then line up the bracket correctly and put the nuts on loosely.

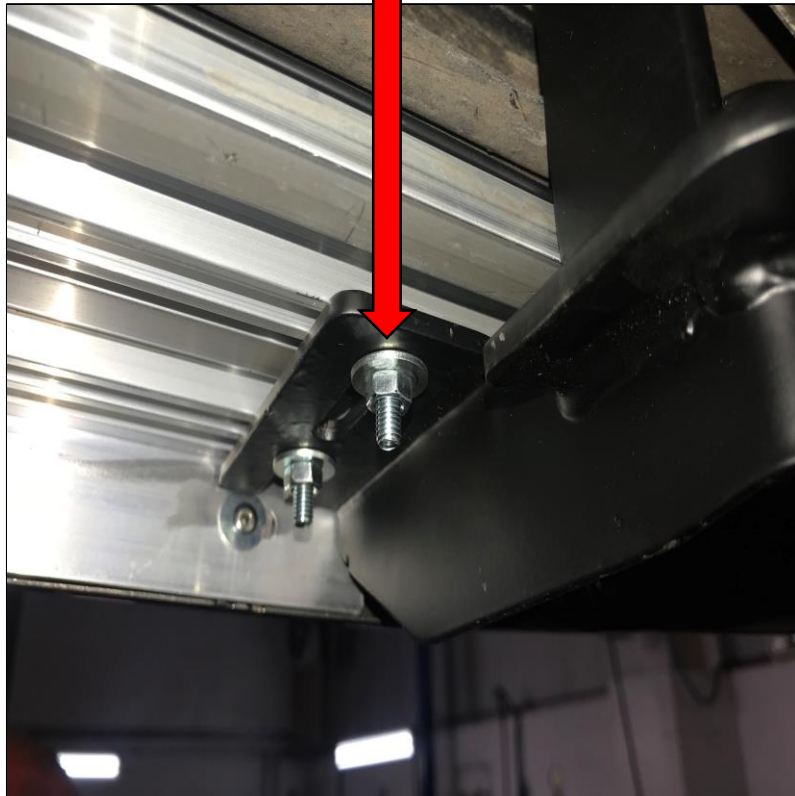
At this fitting point the bolt will already be in your chassis. Remove the bolt shown on the picture, line your bracket up and then tighten the nuts.



To fit the drivers side rear bracket you need to insert 3 T-bolts into the fitting holes shown on the picture. Once the T-bolts are in position line up the bracket correctly and tighten the nuts/washers etc.

6: Fitting the Brackets (EXTRA)

After you align the boards to the right position down the side of the car, then tighten up the nuts/washers etc.



Remove the nuts from the bolts under the running boards. Hold the boards against the brackets and slide the bolts inline with the brackets. Place the boards onto the brackets so that the bolts stick through the holes in the brackets. This may require placing the boards on at an angle.

General Care & Maintenance

!IMPORTANT!

We strongly advise you check under the car at several intervals after the initial fitting to ensure safety. After 7 days, check and tighten any bolts and we recommend inspecting the bolts, brackets and boards at least once every 6 months.

Cleaning Information

You can use most cleaning on these side steps. However, we strongly advise against using petrol based solutions or corrosive cleaning solutions which include TFR (Traffic Film Remover) or similar chemicals (brake strippers etc.) These will tarnish and possibly even corrode parts of the steps.

When cleaning underneath the side steps, be mindful of any protruding bolts or sharp edges, especially at the ends of the boards.

To increase the lifespan of your new side steps, we recommend occasionally cleaning the actual brackets.