

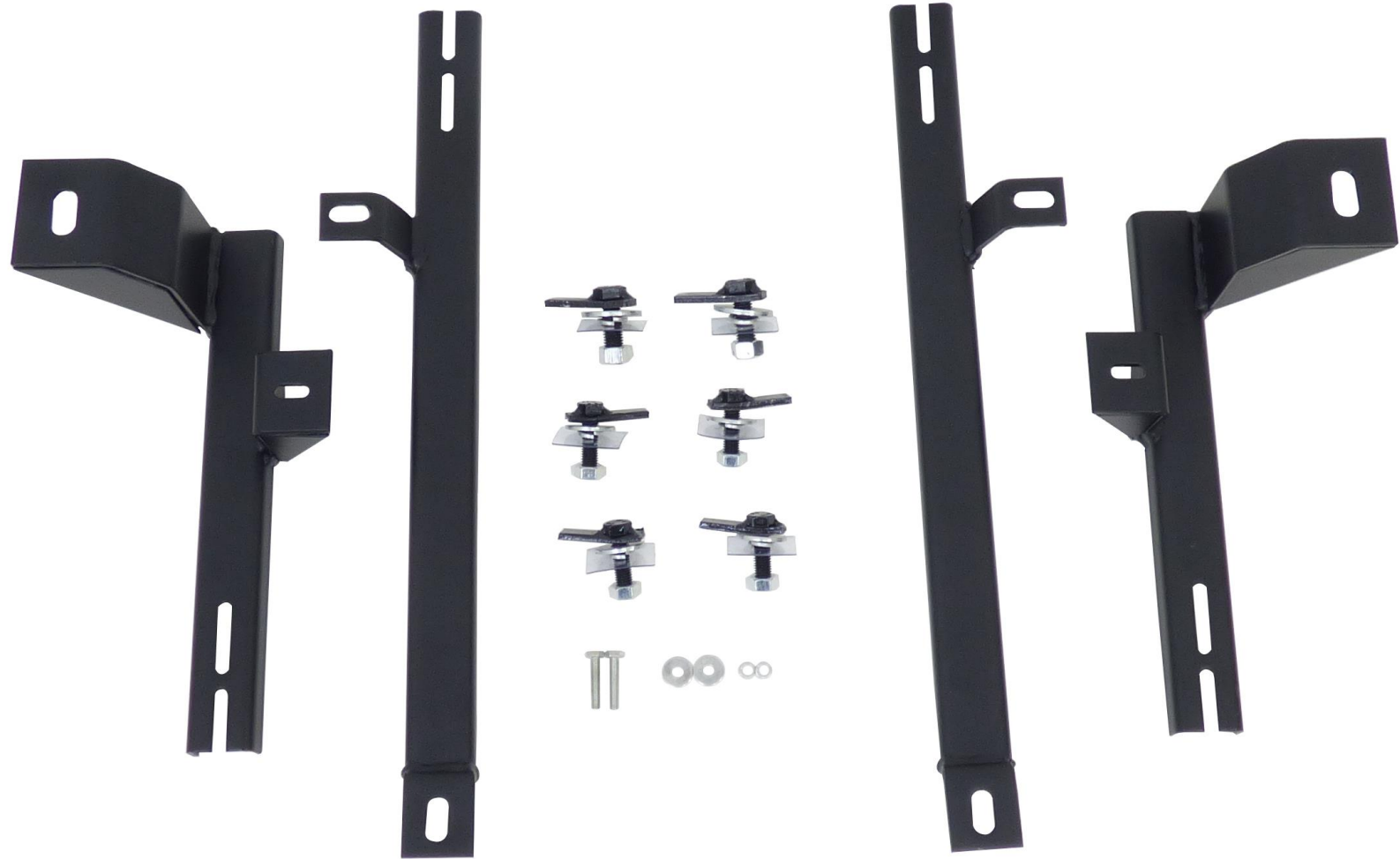
Kia Sorento 2016+ (After Market)  
Running Boards / Side Steps  
Fitting Guide

The logo for DIRECT4x4 features the word "DIRECT" in a bold, black, sans-serif font. The "4x4" portion is rendered in a vibrant green, also in a bold, sans-serif font. A green arrow curves from the bottom of the letter "D" to the right, pointing towards the "4x4" text.

**DIRECT4x4**

# 1: Parts List

Part Name	Quantity
Running Board	2
Front Bracket	2
Rear Bracket	2
Washers	2
T-Bolt	6
Spring Washer	2
Bolt	2



Please check all of the fixings you have received.

If you think you are missing any of the components in the list above, please contact Direct 4x4 for further advice.

## 2: Fitting the Brackets

### 2.1: The Front Brackets

Remove the rubber bung (or grommet) to reveal the hole in the sill. The T-Bolt is then placed inside the hole and attached to the bracket. On some models you may need to put a washer at the back of the bracket as this will lower the Side Step so that it fits better.



You will also need to remove the rubber bung (or grommet) in the chassis to reveal the hole. The T-Bolt is then placed inside the hole and attached to the bracket.

## 2: Fitting the Brackets

### 2.3: The Rear Brackets

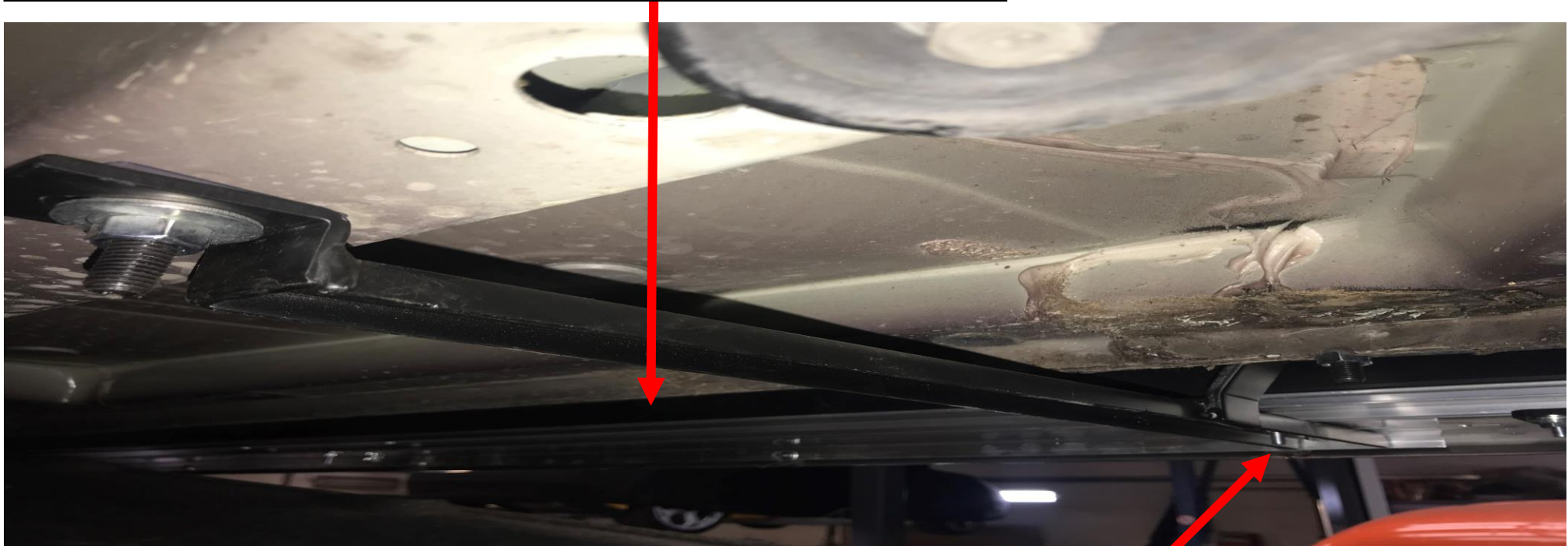
Insert the T-Bolt into the chassis, just behind the undertray at the rear of the vehicle.



Remove the bolt on the undertray at the rear of the vehicle and replace it with the longer bolt provided and tighten up with the undertray in place.

### 3: Fitting the Boards

We recommend that you place the rubber seal behind the sill. Not only does this look better, but it also reduces the muck and dirt getting through, giving you a cleaner car.  
(Our 'Raptor' board is the only step that does not have a seal at the back of it.)



You will need to loosen the 6 bolts on the board and move these down the channel to the bracket. Once the holes are lined up, place the board on the brackets at a 45° angle to allow the board to slip under the sill before pressing the whole step down into place.

## General Care and Maintenance

### Cleaning:

You can use most cleaning products on the steps. We do advise that you avoid any corrosive cleaning solutions as these may include TFR (Traffic Film Remover) or similar (brake stripping/ cleaning) chemicals, as well as petrol based solutions (showroom shine or similar). These will tarnish or corrode parts of the steps.

When cleaning under the steps, be mindful of any sharp edges at the ends where the aluminium box section finishes.

To maintain the life of the steps, we advise you occasionally clean the brackets (or what part of the brackets you can access).

### Maintenance:

We advise you to check under the car at several intervals after the initial fitting.

7 Days – Check and tighten any bolts after the 1<sup>st</sup> week of use.

6 Months – It is advantageous to check the bolts once again after this period.