

Honda CR-V 2007-2012
Running Boards / Side Steps
Fitting Guide

The logo for DIRECT4x4 features the word "DIRECT" in a bold, black, sans-serif font. The "4x4" portion is rendered in a vibrant green color. The letter "D" is stylized with a thick, curved arrow that starts at the bottom left and points upwards and to the right, following the curve of the letter's stem.

DIRECT4x4

1: Parts List

Part Name	Quantity
Running Board	2
Front Bracket	2
Middle Bracket	2
Rear Bracket	6
Small T-Bolt	2
L- Shaped Bolt	4
Large Washer	6
Small Washer	6
Large Spring Washer	6
Small Spring Washer	6
Large Nut	6
Small Nut	6



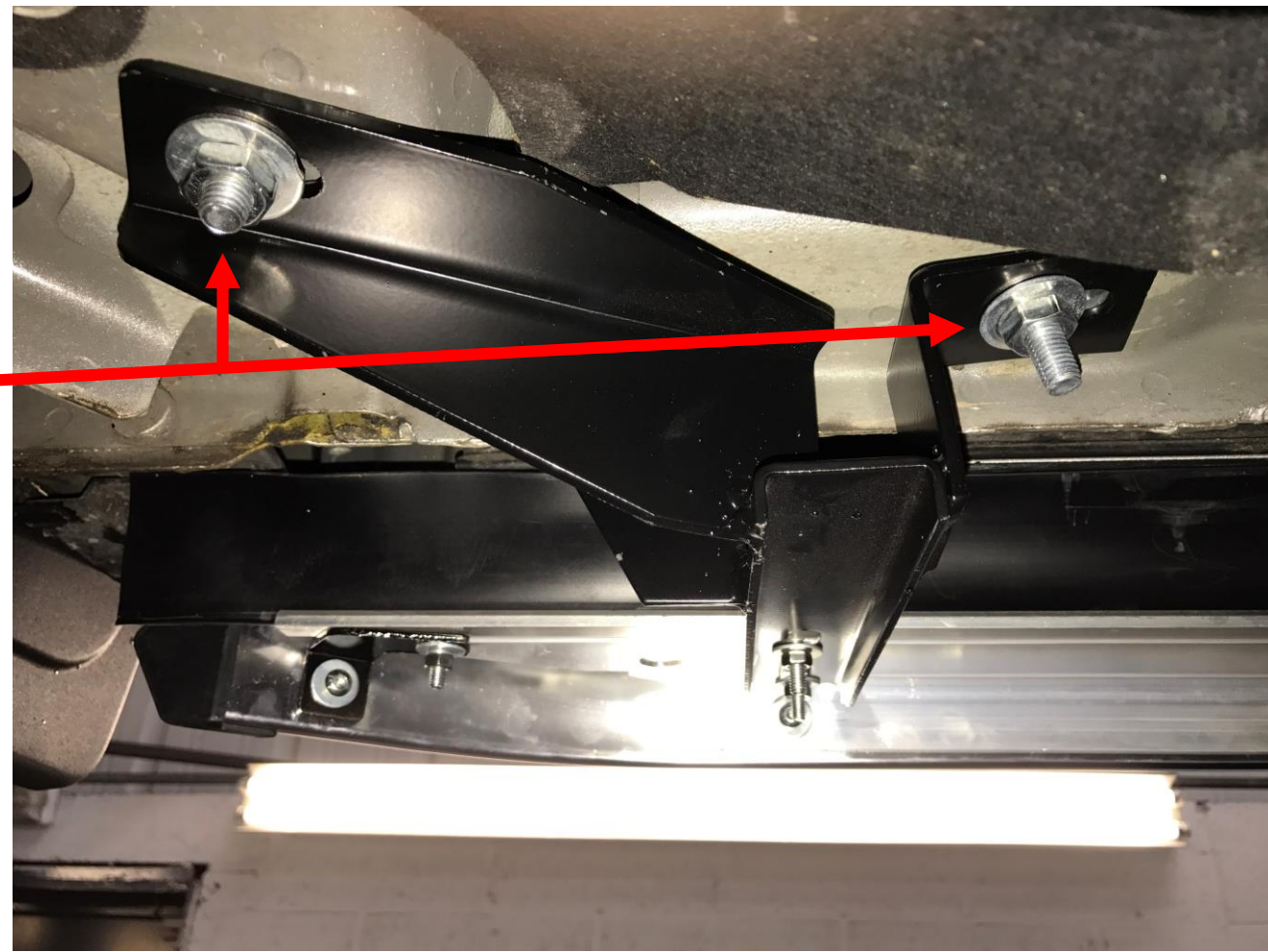
Please check all of the fixings you have received.

If you think you are missing any of the components in the list above, please contact Direct 4x4 for further advice.

2: Fitting the brackets.

2.1: The Front Brackets

You will need to remove the rubber grommit from the chassis to reveal the fitting hole. The Large T-Bolt then fits into the hole.



There is also a hole in the sill that you will need to use for the bracket. The Small T-Bolt sits in this hole.

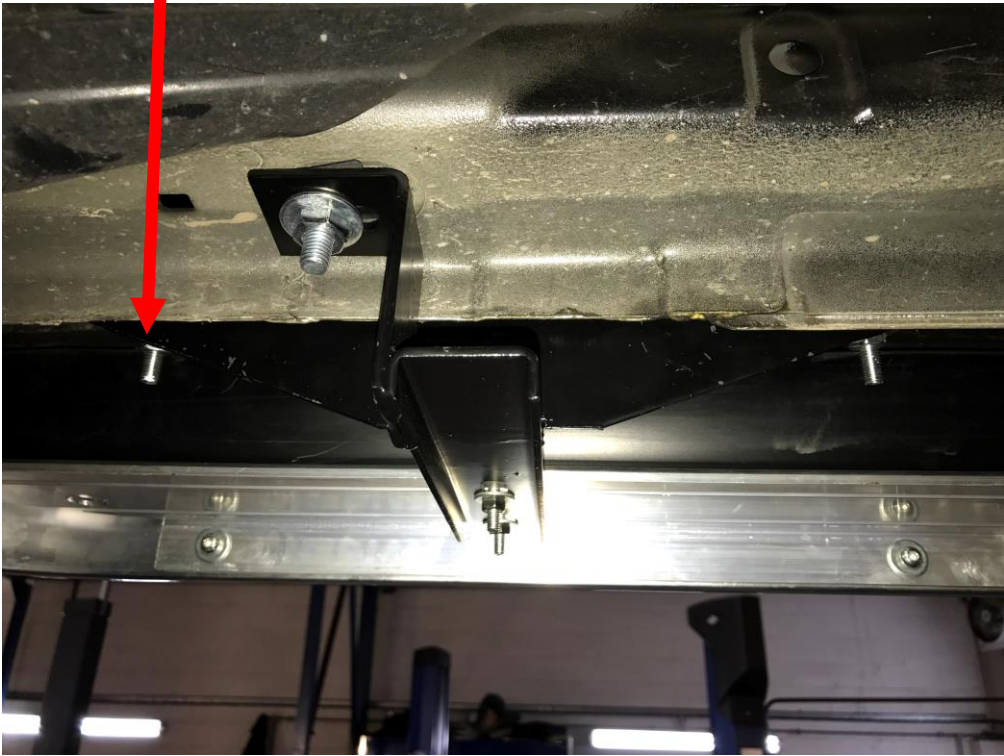
2: Fitting the brackets.

2.2: The Rear Brackets

The L-Shape bolts fit into the 2 holes in the sill.

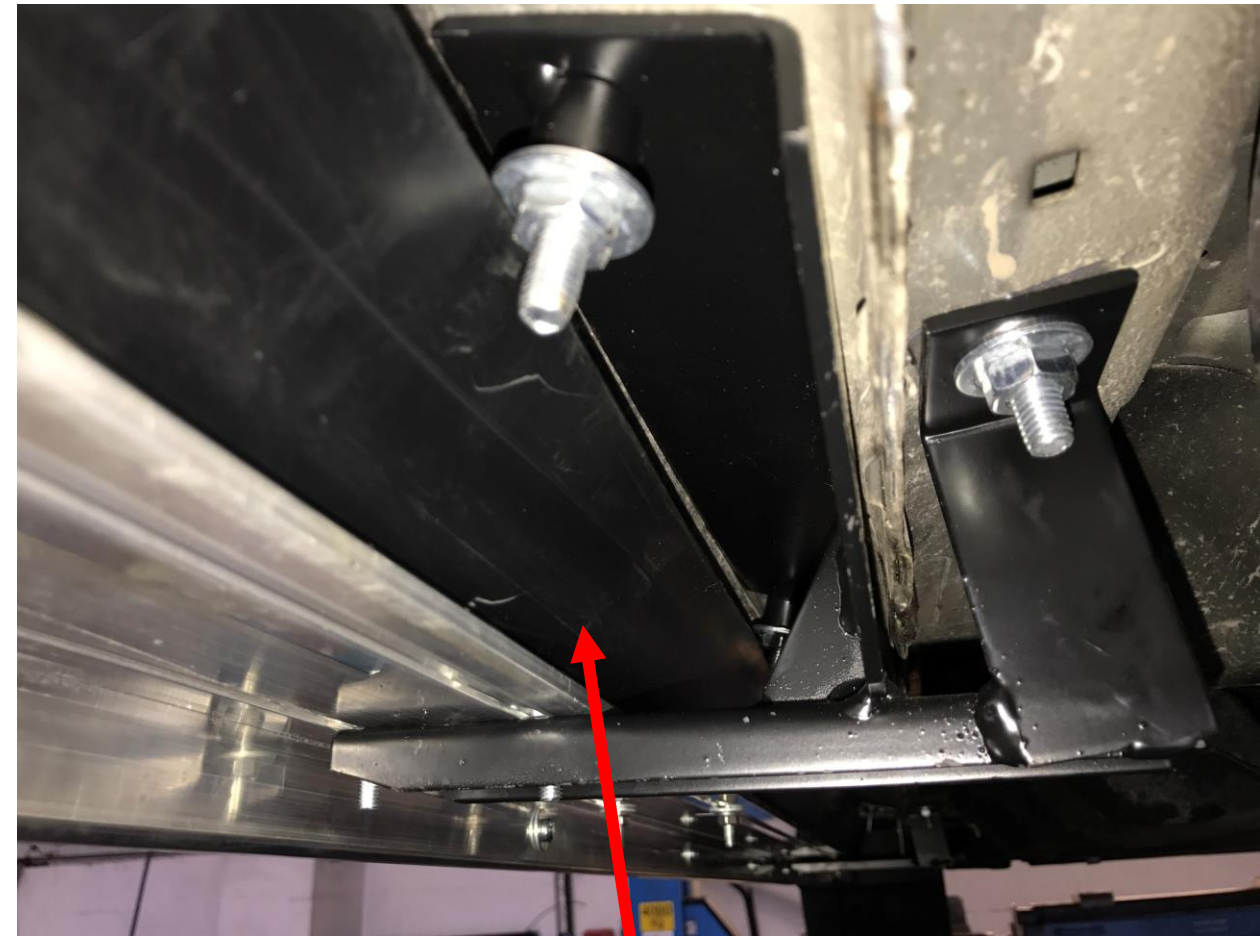
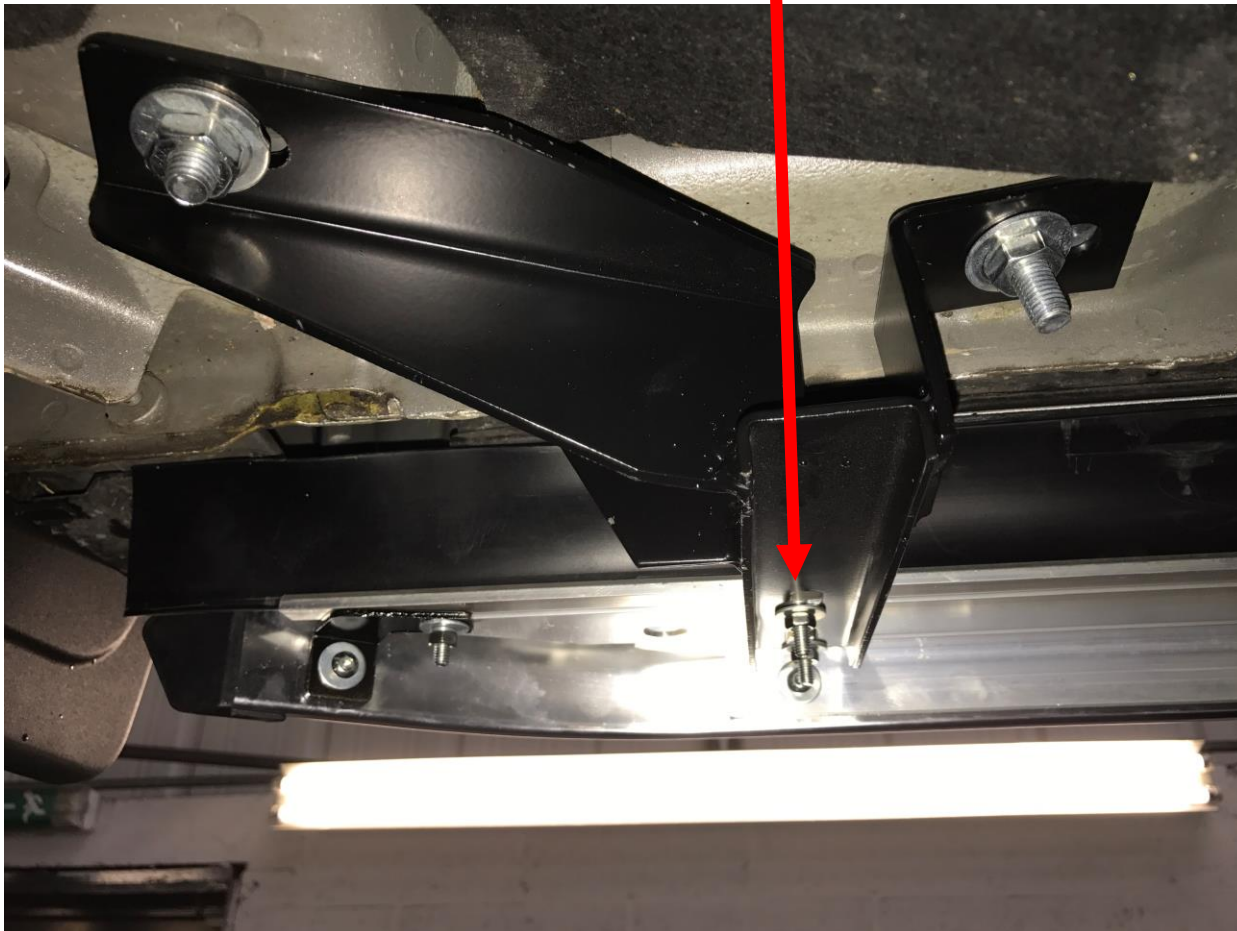


For this hole you will need to use the large T-Bolt



3: Fitting the Boards.

You will need to loosen 4 of the 6 bolts and the board and move these down the channel to the bracket. Once the holes are lined up, place the board on the brackets at a 90° angle to allow the board to slip under the sill before pressing the front down.



We recommend that you place the rubber seal behind the sill, not only does this look better, but it also reduces the muck and dirt getting through giving you a cleaner car.

4: Refitting the undertray.

You will need to cut out slots in the tray to allow this to be refitted once the brackets are in place. For this you have 2 options.

Option 1.

1. Hold the tray up to the mounting points.
2. Using chalk, "white Liquid Chalk pen" or something similar, mark around the brackets that need cutting out.
3. Cut out the slots using an angle grinder.
(Tip: You can also use a file afterwards to make the job a bit neater)

Option 2.

Use a die cutter.

Hold the undertray up and fix some of the clips/screws in place,

This will now allow you to see where you will need to cut out to allow the brackets to fit.

Using a die cutter, cut out around the brackets while holding the tray up.

(Tip: You can also use a file afterwards to make the job a bit neater).

General care and maintenance

Cleaning:

You can use most cleaning products on the steps. We do advise that you avoid any corrosive cleaning solutions. These may include TFR or similar (brake stripping/cleaning) chemicals, or petrol based solutions (showroom shine or similar). They will tarnish or corrode parts of the steps.

When cleaning under the steps, be mindful of any sharp edges at the ends where the aluminium box section finishes.

To maintain the life of the steps, we advise you occasionally clean the brackets (or what part of the brackets you can access).

Maintenance:

We advise you to check under the car at several intervals after the initial fitting.

- 1 Week – Check and tighten any bolts after the 1st week of use
- 6 Months – It is advantageous to check the bolts after this period.