

Introducing the NEW

TwinTec Cobalt Water Softener



TwinTec
COBALT





Contents

- 04** Why choose TwinTec?
- 05** Key features of the TwinTec Cobalt Water Softener
- 06** What is hard water?
- 08** Why is softened water beneficial?
- 10** TwinTec Cobalt
- 12** The first eco-friendly water softener
- 13** Why is salt important?

“I now live with luxurious softened water, without using any electricity. Just fantastic!”

Why choose TwinTec?

The Cobalt is TwinTec's next generation water softener with its improved design, eco-features and robust testing.

It has been designed and manufactured in England to work with all British plumbing systems. With its twin cylinder design, the TwinTec Water Softener is able to provide you with luxuriously softened water all day, every day. An investment in a water softener is an investment in your family and entire home.



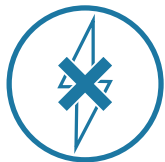
Key features of the TwinTec Cobalt Water Softener



Our water softeners are fundamentally different from competitor products on the market.

The TwinTec Cobalt Water Softener is an unique twin cylinder design. Both cylinders contain specialist resin beads, which trap the minerals that make the water hard. While one cylinder is regenerating (it takes approximately 11 minutes) the other is working, and vice versa.

The twin cylinders work together to supply your home with softened water 24/7 and the design means a greater flow rate is produced, which helps keep up with household water demands. Exclusive to TwinTec, the water is kept clean and fresh, as it is constantly moved through the system.



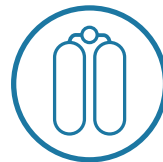
Non-electric powered

The force of your own water powers the TwinTec Cobalt, saving energy. It has no timers and does not need any complicated programming.



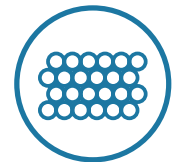
Fitted directly to your mains water supply

Meaning that all the water flowing into and through your home will be softened.



Twin cylinder

This gives you an uninterrupted flow of softened water 24/7, unlike most competitor devices which provide hard water during regeneration.



Ultra-fine 350 micron resin beads

The best in the industry. Our resin has a high exchange capacity and is ideal for high and low flow rates.



Low running costs

The TwinTec Cobalt only regenerates when necessary, using less water and salt than other devices.



Easy to use

Maintenance and servicing free, all you need to do is refill the salt.



Rigorously tested

Over 1 million cycles at our factory. Our dedicated team are constantly working on developing our products.

MADE IN BRITAIN 

Designed and manufactured in Britain

What is hard water?

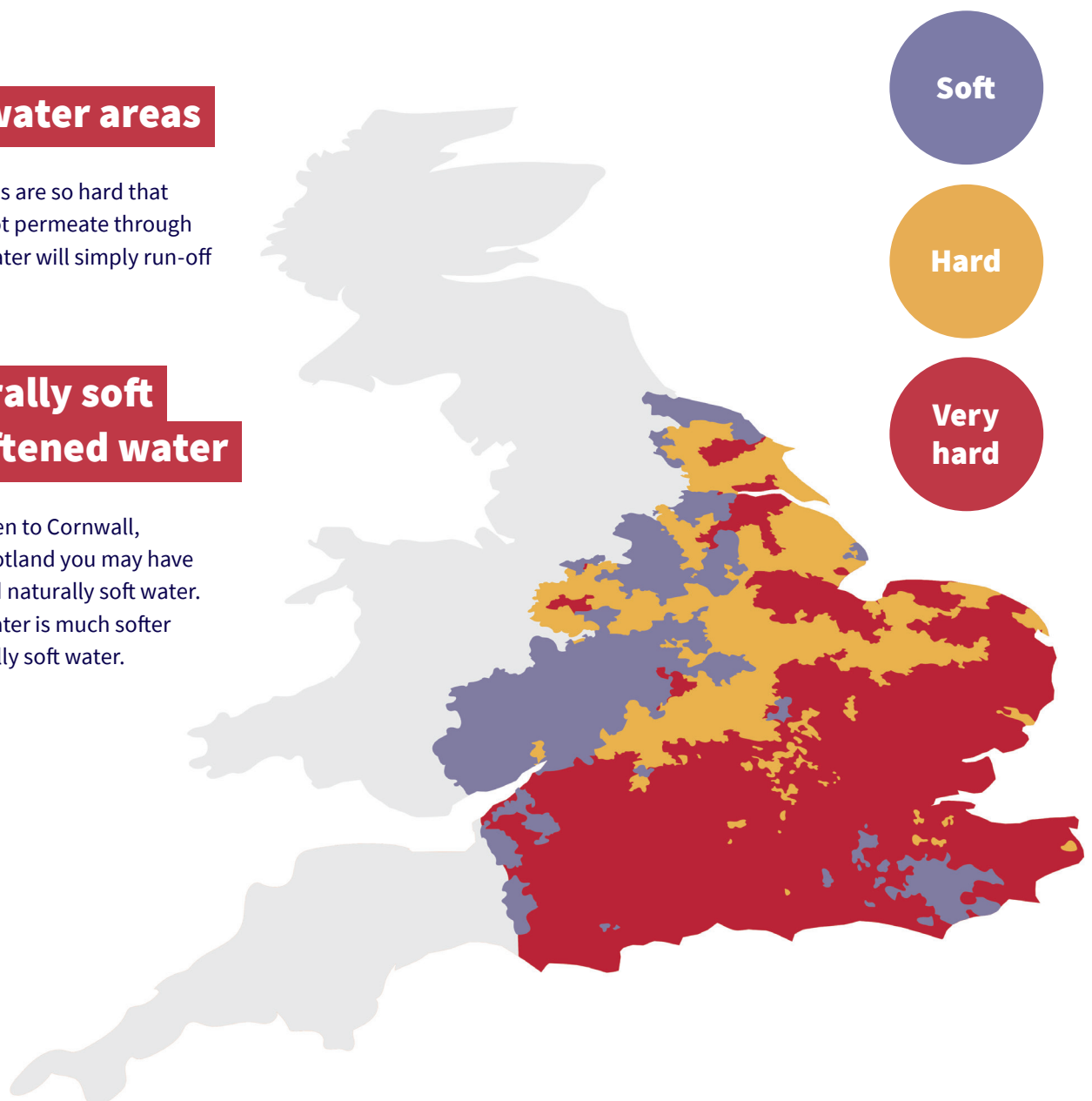
When it rains, the water falling from the clouds is completely soft, it is not until the rain hits the ground that it begins to absorb minerals such as calcium and magnesium found within the earth. These minerals, whilst natural, create scale build up causing hard water damage throughout your home.

Soft water areas

Granite areas are so hard that water cannot permeate through it, so rain water will simply run-off the surface.

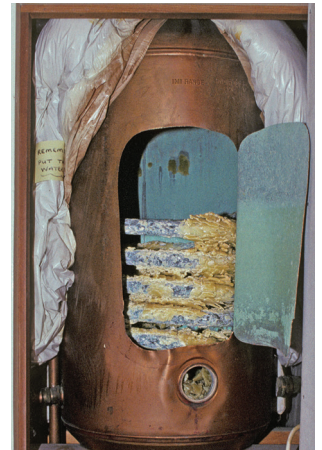
Naturally soft vs softened water

If you've been to Cornwall, Wales or Scotland you may have experienced naturally soft water. Softened water is much softer than naturally soft water.



How hard water affects your home

- Limescale damage that can reduce the lifespan of appliances
- Blocked pipes make your heating system inefficient
- Scale build up in your boiler increases gas bills
- Limescale build up on surfaces makes cleaning difficult



Why is softened water beneficial?

Softened water offers many benefits to you and your home, all made accessible with a TwinTec Cobalt Water Softener.

Softened water eliminates limescale and gets rid of years worth of built up scale. This will reduce cleaning time around the home, create less need for harsh cleaning products and make your home shine.

With softened water, appliances work for longer and are less likely to break down. Your boiler and pipes will stay unblocked, resulting in them running more efficiently; saving you money on your heating bills.

Your skin and hair will also benefit. New research confirms that softened water can greatly alleviate symptoms of eczema and other dry skin conditions. You will also only need half as much shampoo to produce a much better lather, you will feel the difference in your hair and skin.

Rainwater is 'soft', almost pure H₂O.

But when it flows underground through limestone and chalk it picks up minerals such as calcium and magnesium, which make the water 'hard'. This hard water enters your home through your water mains, bringing with it the effects of scale and scum.



“The TwinTec Softener is fantastic, our water is soft, extremely clear and the showers are free from limescale.”

Review Centre

Why is softened water better for your home?



Spend less time cleaning

If limescale has built up around your home, you'll likely be investing a lot of time and money into cleaning products.

Softened water prevents this build up. You will no longer need to use harsh chemical products that hard water homes require. Many of our customers also say their cleaning time has been greatly reduced.



Money saving

A TwinTec Water Softener will improve the efficiency of your hot water system. Softened water will remove the build up of existing hard water minerals in your pipes, making your boiler more efficient.

Appliances like your kettle, washing machine and dishwasher will all benefit from softened water, and will prolong their lifespan.



Shiner home

Scale will disappear from taps and surfaces to uncover beautiful surfaces in your kitchen and bathroom keeping them looking brand new.



Skin science

New research has revealed the link between hard water and skin conditions like eczema. Scientists at the University of Sheffield and King's College London, have proved that hard water damages the skin, raising the risk of infection and potentially contributing to the development of eczema. The study, which we were asked to fund, proves what we've known here for years; that when it comes to skin conditions, softened water can make all the difference.



Longer lasting appliances

With softened water scale will slowly diminish, extending the lifespan of appliances. With no hidden limescale build up in appliances and pipes you will save money on costly maintenance or breakdowns.

Introducing the NEW TwinTec Cobalt

The TwinTec Cobalt is compact enough to fit under your sink, perfect for everyday home use.

Using a unique twin cylinder design, the twin cylinders work together to supply your home with softened water 24/7. The TwinTec Cobalt is non-electric and only regenerates when necessary, saving energy and lowering running costs. Rigorously tested to over 1 million cycles at our factory, you have the confidence it is the most reliable water softener on the market. Suitable for homes with 1- 2 bathrooms.

How it works

It is a simple process that works through ion exchange.

Both cylinders are filled with resin that traps the calcium and magnesium hardness minerals allowing softened water to enter your home.

Regeneration process

When one cylinder has reached its full capacity it will then shut off to do a quick cleaning process which takes only 11 minutes, but do not fear the second cylinder will still be serving your home so there is never a break in the system. Leaving you with softened water 24/7. That is the beauty of the twin cylinder design.

The whole process is powered by your own water pressure.

Specification

Dimensions	Height: 487 mm
	Width: 202 mm
	Depth: 438 mm
Capacity	3,000 litres of softened water per day
Regeneration	Time required: 11 minutes (approx)
	Salt used per regeneration: 300 g
	Water used per regeneration: 17 litres
Water pressure	1-10 bar (PRV recommended from 6 bar)
Maximum peak flow rate	56 l/m





Features



Smart shuttle metering



Accurate metering for maximum flow rates

Measures every drop of water, meaning no water is wasted



Non-electric

great efficiency and low running costs

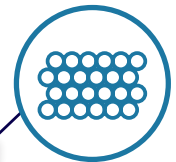


Twin parallel cylinder system

24/7 softened water with no interruptions



Smallest twin cycle softener
now even smaller



Advanced resin bead formula



Curved mini block salt

Lighter and easier to load, maximising the space in the water softener



Eco cabinet

The cabinet is made from 62% recycled plastic from a clean source.



The first eco-friendly water softener

The new TwinTec product is the most eco-friendly water softener on the market.

The cabinet is made from:

62%
recycled
plastic

The recycled plastic is PostCW plastic and is a

Clean plastic source

PostCW plastic is **ordinarily a single use plastic** and would become waste.

Now, they are being RECYCLED to provide plastic for the TwinTec Cobalt Water Softener cabinets



Using
recycled
plastic

saves

84 TONNES

of plastic waste every year
that otherwise would end up in landfill

Why is salt important?

Your TwinTec Cobalt Water Softener needs block salt to function, which needs to be replenished regularly so you have an uninterrupted softened water supply.

Your TwinTec Cobalt Water Softener is super easy to care for – you won't need regular service appointments the only thing you'll need to do is refill it with curved block salt when it runs out. The new curved block salt fits neatly around the water softener casing and is smaller and more compact. The new design makes it easier to handle and load. Without block salt, your water softener can't regenerate and continue to soften your water.

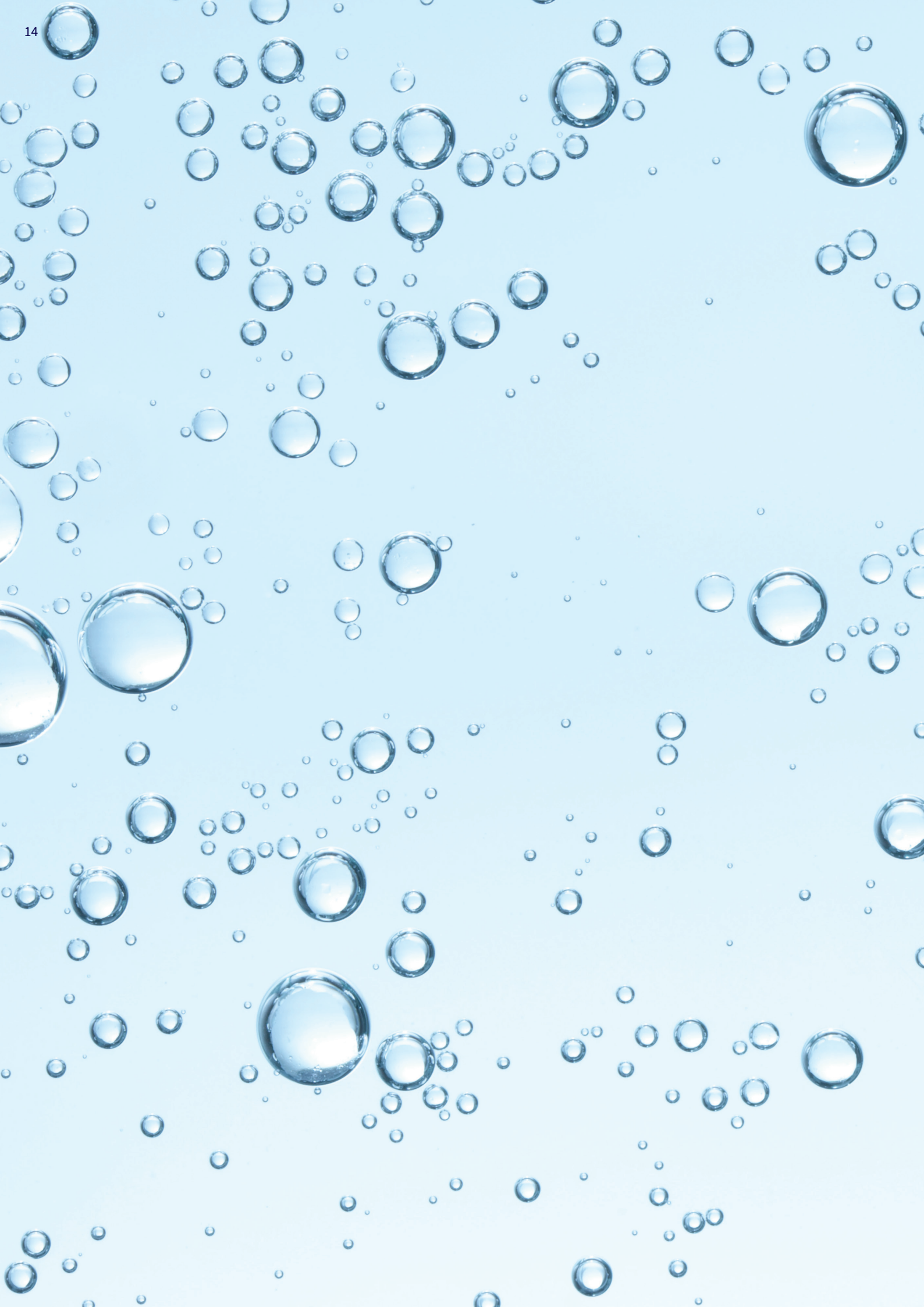
How much block salt you need depends on how much water you consume in your home.

When your TwinTec Cobalt Water Softener is first installed, you may find that the curved block salt is used up at a slightly faster rate. This is completely normal.

All our salt adheres to the BS EN 973 standard for water softening salt and we can guarantee 99% purity or better.

To buy salt please contact your authorised TwinTec Dealer





“To get into a bath of lovely soft water was sheer bliss! There is no way I could do without my water softener!!”

TwinTec

COBALT

Your TwinTec dealership is:

If you have any questions, our team is here to help:

[TwinTec.com](https://www.twintec.com)

