

## Dynamic Enhancement Explained

Nutritionals supplied by Miracle Products are Dynamically Enhanced for a minimum of 72 hours using advanced proprietary Tesla Scalar Vortex Quantum Sound, Infrared & Inert Noble Gas technology.

The Dynamic Enhancement process amplifies nutritional quality by generating molecular coherence and structure, resulting in ionic particles that create the most bioavailable, effective, stable and fast acting nutrients possible!

*Dynamic Enhancement creates nutritional products that are both  
Exceptional and Unique!*

### How does Dynamic Enhancement work?

Our Tesla Scalar Vortex Quantum Sound Infrared & Inert Noble Gas device is designed by Robert Lloyd according to the great minds and works of Nicola Tesla and Dr. Walter Russell. It uses 20,000 Hz amplified internal coil system, constructed with optical quality quartz crystals in specific geometry with gold filament windings, Inert Noble Gasses and near infrared. This construction produces and radiates coherent scalar energy.

### Tesla Scalar Vortex Coil Design

The main coil design consists of 5 sub-coils, each with an optical quality specifically cut crystal core (round, triangle, square, pentagon and hexagon). Each geometrically cut crystal core shape, depending on its angles, has a different personality and function. All 5 sub-coils have 3 separate coils that are wound in a clockwise counter clockwise configuration with the centre coil "bucking" the end coils. These similar fields are brought together to increase the desired effect. Incidentally, the hexagonal (six sided) coil incorporates the same angles discovered in clustered water rings that influence DNA cellular communication.

*The combination of each of the 5 geometric sub-coils in the main coil, in the company of the Inert Noble gases and near infrared produce profound phenomena.*

Rather than using a single coil, three are used to create the one (Figure 1). Each of the sub coils has clockwise counter clockwise actions but they also have a horizontal and vertical clockwise counter clockwise action. Each sub coil is wound in such a way to create a mathematical balance as the coil increases in size as each layer is added.

The sub-coils are also configured in such a way as to cause a bucking reaction from the centre coil. Consider Scalar energy as pure consciousness. It exists everywhere. Scalar energy is the platform which the dimensional movement of energy manifests its form and substance.

Figure 1



*Optical quality Quartz Crystal discs are utilized on top of the internal main coil to amplify the frequency tones (528Hz) into the structured imprinting of water, food, supplements or any item placed on top of the main coil.*

### **Sacred Geometry**

Sacred Geometry is the blueprint of Creation and the genesis of all form. It is an ancient science that explores and explains the energy patterns that create and unify all things and reveals the precise way that the energy of Creation organizes itself. On every scale, every natural pattern of growth or movement conforms inevitably to one or more geometric shapes. The ancients believed that the experience of Sacred Geometry was essential to the education of the soul. They knew that these patterns and codes were symbolic of our own inner realm and the subtle structure of awareness. To them the “sacred” had particular significance involving consciousness and the profound mystery of awareness; the ultimate sacred wonder.

*Each geometric configuration of the optical quality quartz crystal coils contributes to specific properties.*

### **Why we use Optical Quality Quartz Crystal**

Quartz crystal is a solid material whose constituent atoms are arranged in an orderly repeating pattern extending in all three spatial dimensions. Thus crystals embody perfect coherent structure; demonstrating an architectural and mathematical perfection based on the Golden Proportion phi ratio.

Optical quality quartz crystal is utilized in the Scalar Vortex coil construction not because it is pretty but because it structures energy precisely.



All quartz crystals have 6 primary properties: They are able to structure, store, amplify, focus, transmit and transform energy, which includes matter, thought, emotion and information.

Quartz naturally harmonises and energizes our gross and subtle bodies; while structuring water and other energies naturally. In addition, Quartz will amplify coherent energies through the principle of resonance. As quartz can organize energy simply by contacting it, it is not difficult to begin to understand their influence on our health and minds. Kirlian photography has shown that merely holding a double terminated quartz crystal can double the measurable electromagnetic fields of the body.

***It is now recognized in many natural health modalities, that restructuring the physical and subtle bodies is a prerequisite for optimal health.***

The most well known example of the ability of quartz to structure energy is the quartz watch. In 1880 it was discovered that if you applied electricity to quartz, it vibrates in a regular consistent and harmonious pattern. It vibrates with such precise coherence that you could set the time by it.

***Quartz crystals have been in regular use for many years to give an accurate frequency for all radio transmitters, radio receivers and computers.***

Their accuracy comes from an amazing set of properties. Quartz, silicon dioxide like most sand, is unaffected by most solvents and remains crystalline to thousands degrees Celsius. The property that makes it an electronic miracle is the fact that, when compressed or bent, it generates a charge or voltage on its surface. This is a fairly common phenomenon called the piezoelectric effect.

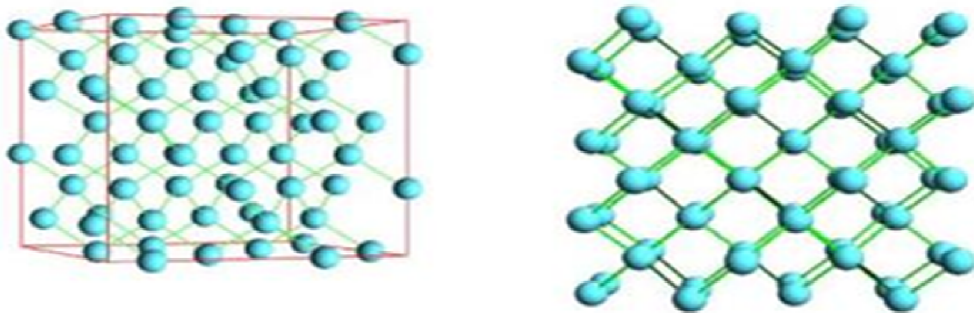
*Piezoelectricity is the force behind all biological functions.*

### Why is Structuring Important?

The structure of molecules is far more important than the chemical composition. When structured, molecules are whole and complete; electrons are bound creating a stable coherent molecule.

Consider that graphite, the softest mineral known to mankind is **chemically identical** to diamond, the hardest mineral – the difference is the structure of the molecules!

Figure



Diamond lattice: side view (left) and top view (right)

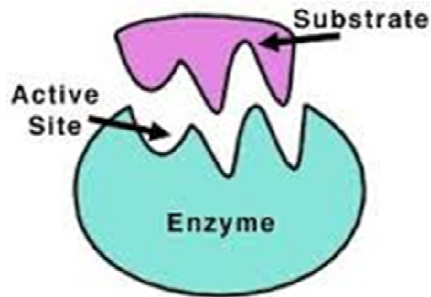


Graphite lattice: side view (left) and top view (right)

It is important to understand that every cell has receptors that take in nutrient signatures. The receptors are like a lock and key mechanism and the body must expel energy to structure nutrients to fit the cell receptors.

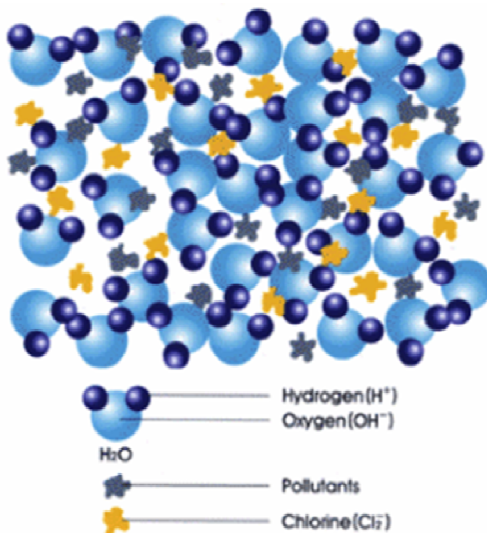
The following diagram illustrates the lock and key concept using enzyme receptors.

If the two pieces do not fit, the enzyme will not work. This specific fit is called the “lock and key” model.



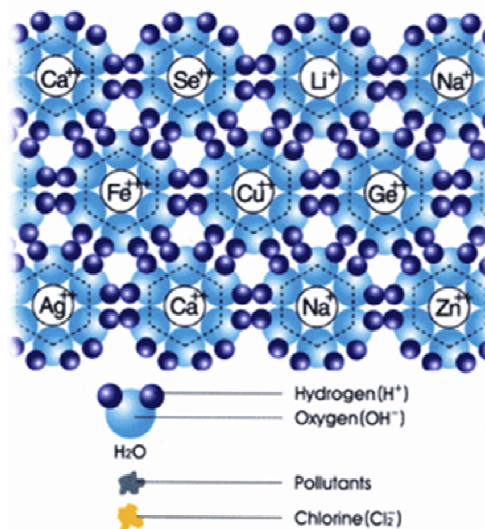
*Our proprietary Dynamic Enhancement process structures nutrients creating a coherent fit for receptor sites.*

If a body is low in energy (sick or diseased) its ability to structure nutrients for absorption is compromised; our Dynamic Enhancement system does the work for the body in order that every bit of nutrient is utilized. In turn, when nutrients are structured less is required because the whole nutrient is entirely bioavailable.



Unstructured Molecules

Structured Molecules



## The Natural Health Benefits of Scalar Energy

The atoms that form each cell contain electrons that are in constant motion and therefore radiate electromagnetic waves. These waves are measurable as frequencies, the rate of which varies according to the particular form of matter. It would appear then that all matter exhibits its own natural rate of vibration and that the frequency is dependent on the oscillation rates of the electron charges. Atoms possessing the same frequency rate tend to combine and strengthen each other through the principal of resonance.

It is understood that cells lose their integrity through various forms of pollution compromising the true and natural vibratory spin. When compromised cells are exposed to the balanced energy produced by the Scalar Vortex, their integrity is re-established and strengthened.

*A coherent field cannot hold the energy that supports disease.*

## Quantum Sound

In physics resonance can have the effect of amplifying relatively small forces or effects so that they become much larger. Resonance of sound waves is an effect which makes all the beautiful sounds around us possible. Interestingly, whenever a resonance is produced, the audible sound feels louder and even sweeter.

The unique properties of Scalar Vortex Quantum Sound technology creates multiple wave forms; it is the abundant interaction of these wave forms that create **Pure Scalar Energy** and the intersecting of these wave forms that produce truly phenomenal effects.

Think of the wave forms akin to a fishing net; the smaller the mesh the more times the twine of the net intersects in a given area. The more wave interaction the stronger the field. This is achieved in the Scalar Vortex device by using the internal coils (see Scalar Vortex Coil Design Figure 1).

The Scalar Vortex Quantum Sound system utilizes the principals of resonance to deliver coherent frequency information directly into the bio-quantum template of any substance or remedy placed within its range.

## Why we use Solfeggio Frequencies with Special Emphasis on 528Hz

What are the most ideal frequencies to use? What kind of electrical energy best suits the body?

Just as with any form of nutrition, wholeness is the key (remember our diamond/graphite example – Figure 2). Presenting the body with the precise

frequency required to achieve coherence is far more effective than delivery of a broad range of frequencies that are not specific to individual needs.

Figure 3

528Hz Frequency Cymatics in Water



Math scientist Victor Showell describes 528 as fundamental to the ancient Pi, Phi, and the Golden Mean evident throughout natural design. Vic Showell and John Stuart Reid (a pioneer in acoustic research and cymatic measurements) have proven that 528 is essential to the sacred geometry of circles and spirals consistent with DNA structuring and hydrosonic restructuring.

Biochemist Steve Chemiski found that the 6 sided clear clusters that support the DNA double helix vibrate at the specific frequency 528 Hz. Restoring DNA to its original, near-perfect state through resonance of the essential vibrational effect is followed by profound benefit: increased life force energy, clarity of mind, awareness, activation of creativity and ecstatic states like deep inner peace.

### **The Solfeggio Frequencies**

To comprehend the significance of the solfeggio frequencies we need to first understand that everything in the universe vibrates and oscillates. Therefore the

connecting link between all forms of energy is vibration, sympathetic harmony, and resonance. Vibration is everything and every vibration has its own frequency. By exposing the mind and body to the Solfeggio frequencies, you can easily achieve a greater sense of balance and deep healing. The Solfeggio frequencies align you with the rhythms and tones that form the basis of the Universe.

Just a brief history - the Solfeggio frequencies come from an ancient Pythagorean musical scale that was thought to have been lost centuries ago and is based on 'Just Intonation' as opposed to the 12 tone temperament that is in use today. These frequencies and their special variational tones stimulate the higher chakras and were believed to impart powerful spiritual blessings when sung in harmony by producing a shift in rapport with time and space and generating an altered state of consciousness.

These ancient frequencies are shrouded in secrecy and are said to contain within them the power of creation and transformation because they are believed to have the capacity to effect matter and consciousness. Three, six and nine are the root of the vibrations of the ancient Solfeggio frequencies. Frequencies are electromagnetic musical tones. The universe is a beautiful symphony of sounds and melodies.

Intentional Coherency Project has added another component to these ancient sounds. Our technician has put each of the solfeggio frequencies through our voice analysis program to locate the resonating 7 pairs of atomic elements. Atomic elements are of course the building blocks of matter - so by adding the atomic element resonance with the solfeggio sounds enhances the variational instruction - if you will - for manifesting the desired outcome. These sounds may indeed hold the keys to longevity, super-consciousness, accelerated healing, dimensional travel, and the fabric of time/space itself.

174 Hz – Foundation for Joy and Purpose

It has been found that this frequency can alleviate pain both physically and energetically. It is known to generate stability, order, and the concrete action necessary to prepare a stable foundation for the acceleration and evolution of consciousness. The experiencer develops discernment - engendering the internal harmony needed to support a life lived from joyous intention.

$$1 + 7 + 4 = 12 = 1 + 2 = 3$$



## 285Hz – Accessing Universal Mind/Quantum Cognition

This frequency accelerates the opening out of consciousness in multidimensional fields of awareness while anchoring the laws of truth and wisdom. Perception is amplified beyond normal ego conditioning to embrace opposites and comprehend the totality of our eternal Self. Additionally, this frequency can help to restructure damaged tissue by influencing the energy fields through resonance of the original undamaged form.

$$2 + 8 + 5 = 15 = 1 + 5 = 6$$

## 396Hz -Liberation from Guilt and Fear

This solfeggio tone provides the means to intensify connection to Source and establish the sense of grounding, awakening and belonging that banishes all obstacles to peace. It causes beneficial effects in cleansing feelings of guilt and fear which often represent the basic obstacles to realization. Furthermore this frequency will generate the power necessary to achieving goals.

$$3 + 9 + 6 = 18 = 1 + 8 = 9$$

## 417Hz – Transmutation/Undoing Situations and Facilitating Change

Inner guidance is awakened providing discernment of truth, clarity of vision and self empowerment. It removes limiting impressions, cleanses traumatic experiences and clears destructive influences of past events. The experiencer is propelled to release and transmute crystallized emotional patterns while fostering empathy and clear communication bringing order to all relationships.

$$4 + 1 + 7 = 12 = 1 + 2 = 3$$

## 528Hz –Transformation and Miracles/DNA Repair

This frequency is used to restore human DNA to its original, near-perfect state through resonance of the essential vibrational effect. The process of DNA repair is followed by profound beneficial effects: increased life force energy, clarity of mind, awareness, activation of creativity and ecstatic states like deep inner peace. It opens you for deep spiritual experiences through uniting the source of wisdom and Light. This tone amplifies your intuition by providing connection to Divine guidance/Source.

$$5 + 2 + 8 = 15 = 1 + 5 = 6$$

### 639Hz – Connecting and Relationship Harmonization

This ancient solfeggio frequency promotes balance, health and tranquillity while enhancing communication, understanding, tolerance and love. This tone assists in the creation of harmony in all relationships and can be used for specifically dealing with relationships problems; those in family, between partners, friends or social issues. In esoteric applications it can be used for communication with other dimensions or spiritual worlds.

$$6 + 3 + 9 = 18 = 1 + 8 = 9$$

### 741Hz – Awakening Intuition/Consciousness Expansion

Internal strength is optimized in the experiencer through resonating purified expressions of love and purpose. Self empowerment is innervated, inspiring clarity of mind and vision. Another important application of this sound frequency is the cellular cleansing of various toxins; viral, bacterial, fungal as well as different kinds of electromagnetic radiations and pollutions. This solfeggio tone leads you to a purer, stable and spiritual life.

$$7 + 4 + 1 = 12 = 1 + 2 = 3$$

### 852Hz – Returning to Spiritual Order

This solfeggio tone is directly connected to the principle of Light; the higher form of biological energy. This frequency can be used as a means to open communication with Source, the all-embracing Spirit. It raises awareness and arouses access to spiritual experiences. Intuition and emotion are connected, protected and expanded as the Inner Voice becomes clear and strong in the revelation of divine purpose. Cellular transformation is galvanized through resonance by emulating this higher frequency.

$$8 + 5 + 2 = 15 = 1 + 5 = 6$$

### 963Hz - Numinous Accord/Communion with Source

Divinity is awakened in the experiencer as the vibrations resonate all systems to their original, perfect state. It is connected with the Light and all-embracing Spirit that enables direct experience, the return to Oneness. This frequency re-connects you with Source, the energies of the spiritual world allowing Light and Love to guide the present experience. It is the homecoming to our true nature.

$$9 + 6 + 3 = 18 = 1 + 8 = 9$$

## 432 Hz – Nature's Universal Tone

This frequency is the natural vibration of the universe that resonates with the human heart chakra and renews our DNA. That is why we feel comfortable and happy in nature. The chirping of birds, the sound of sea dams, everything in nature vibrates at 432 Hz.

$$4 + 3 + 2 = 9$$

Notice the repetition of the numbers 3, 6 and 9. These are Tesla's sacred numbers. Our physical body is high density energy and vibrates at lower frequencies. When you experience the Solfeggio frequencies, you get a balance of your own energy and can dissolve condensed matter and raise your vibration through resonance.

### **When we play a frequency through the Scalar Vortex device, what is actually happening to the electrons/protons?**

The energies from the Scalar Vortex device are not magnetic; therefore the phenomena cannot be understood as pure particle dynamics. In point of fact, what is occurring when there is a potential difference in a wire is vortex action. The vortex action is occurring even in DC. When the vortex is changing, the vortex itself tends to expand and contract. When the changes happen fast enough a ripple will actually move through the vortex.

This primary aspect is also created in an ordinary coil. The complex Scalar Vortex coil design incorporates various methods of bucking and counter rotational fields of cancellations that cause a reduction of the physical aspect. As a result, the changes that are held at the more subtle levels become much more apparent.

*The Scalar Vortex technology has enabled us to generate coherent subtle fields that assist in molecular coherence of nutritionals to obtain maximum bio-availability and benefit.*

### **Understanding the Language of Frequency**

One would best begin to describe the approach of our Scalar Vortex technology by understanding the language of energy, or frequency. All vibration is made up of energy pulsations of positive and negative polarity. We call that "frequency." It is the way we classify different expressions of energy.

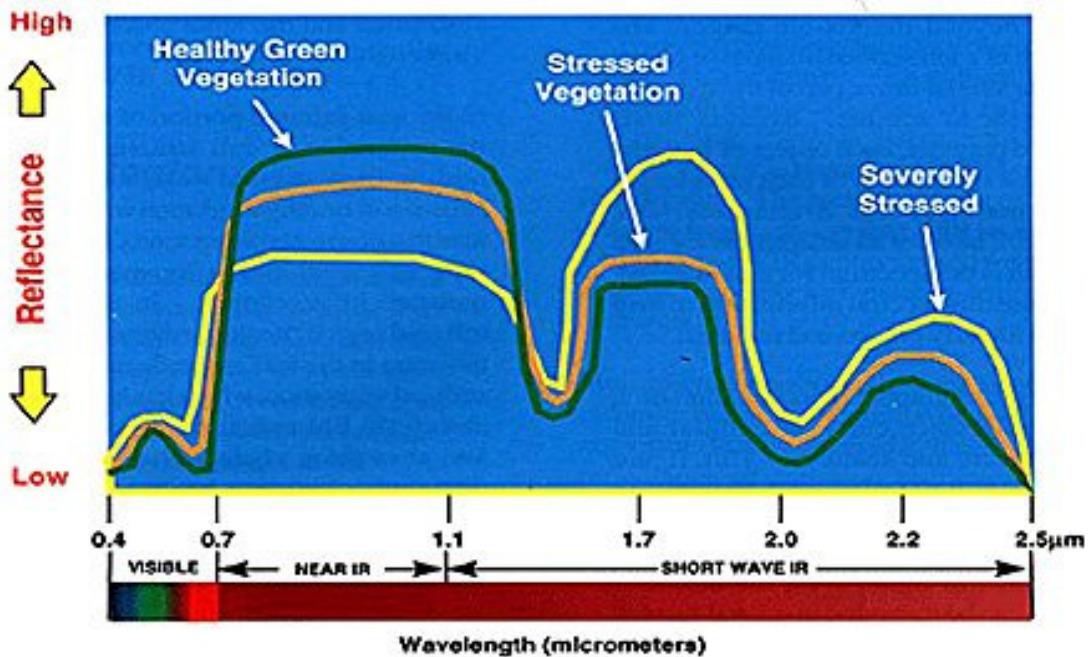
The Electromagnetic Spectrum (EM) is a whole picture or a log of all the energy frequencies discovered to date. It is called "electromagnetic" because energy has both an electrical and magnetic component. The EM Spectrum then is a description of the energy frequencies from a few cycles per second to several million cycles per second. Low frequencies, for example, describe the electrical energy of brainwaves. A few hundred cycles per second is what we call sound: a few thousand per second are radio waves, and several million cycles per second are called light. So, from sound to light there is a very broad range of frequencies. Colour is simply a specific light frequency.

Our propriety Scalar Vortex device generates complicated interference patterns exceeding six wave forms. Most other conventional boilerplate technologies simplistically beat two wave forms or frequencies together. In contrast, the interference pattern that is generated with this technology exhibits dynamic shifting in four dimensional space (the three spatial dimensions plus time). By the use of a proprietary phasing equation we are able to manipulate the Scalar energy construct so that it maximizes the impact on imprinting nutritionals to deliver the maximum benefit.

### **Increasing Nutritional Value and Bioavailability with Near Infrared**

Infrared has been proven to increase nutritional value and bioavailability along with speeding cell regeneration. Our Scalar Vortex is equipped with 660nm near-Infrared; which is a shorter wavelength of infrared energy that carries 10 times the energy of far infrared.

Consider that our sun emits 37% of its total energy in the near infrared range and only 3% is in the far infrared range. Much like sunlight is needed to produce vitamin D, we are equally biologically hardwired to use near infrared. In fact, it is now understood that the human body is partially photosynthetic. In other words, we need sun light and near infrared for optimal health. Near infrared light increases energy levels inside the cell through a natural cellular response to near infrared light wavelengths.



A brilliant study was conducted at the Turkish Scientific and Technological Research Council (Project No: 111O204) to evaluate the potential of Infrared stabilized rice bran (SRB) as an ingredient in cracker formulation in terms of nutritional, sensory, and textural attributes. In this study, Infrared stabilization was applied to rice bran to prevent rancidity and extend its shelf life.

*The prominent conclusion of the experimentation demonstrated a notable increase in nutritional value (particularly in B vitamins) of crackers that were stabilized using Infrared.*

### Why we use 660 nm Near Infrared

The University of Chicago, researchers discovered that the average wavelength of cell tissue in the human body ranged between 600 nanometres and 720nm: 660nm is the mid-point. So in essence, the reason a 660nm is more effective in pain reduction and tissue regeneration than any other single frequency is because it is closer to the resonant frequency of cell tissue. The other reason is that 660nm absorbs more readily in haemoglobin.

As you move towards the red end of the spectrum, the rate of cellular regeneration is increased. So, over the years researchers migrated to Infrared, red and eventually the 660 nanometre wavelength because it was the fastest way to regenerate tissue.

## The Purpose of Mirrors in Our Scalar Vortex Device

Light reflected from a mirror contains a higher percentage of soft electrons than the incoming light. When photons reach the reflecting surface they are momentarily stopped. Some scatter and interact with each other to form soft particles. Others meet incoming photons to produce other soft particles.

“The soft particles tend to act as catalyst for the reacting particles. This has a tendency to disintegrate the soft particles involved. The release of energy then expedites the reaction. The disintegration of the soft particles also allows the normally powerful electrostatic field effects within the atom to return to their original state.” - The Awesome Life Force, Joseph H. Carter

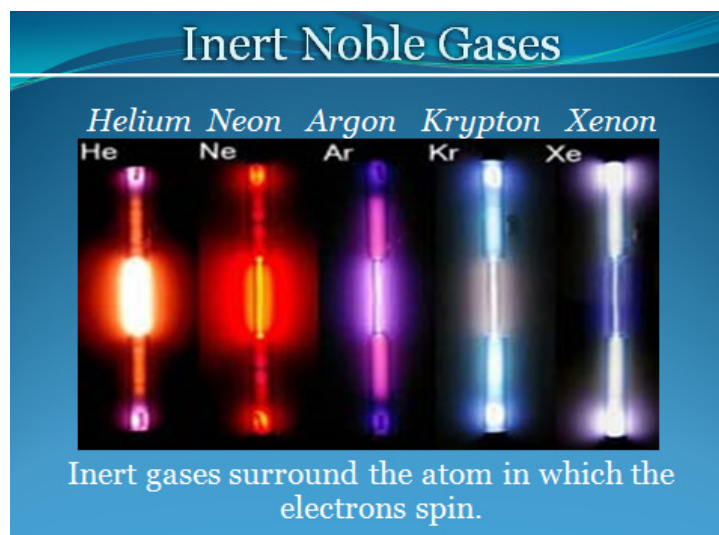
### *Soft electrons make chemical changes possible.*



Our Scalar Vortex Infrared technology utilises a mirror surface with near infrared to encourage this phenomenon and promote the chemical change necessary to restore atoms to their original pure state along with amplifying nutrient content.

## Why we use Inert Noble Gasses

Noble Gases (Helium, Neon, Argon, Krypton, Xenon) are the most unique of all the elements in the universe. They are called the Inert Gases because they are completely balanced in their number of electrons, protons and neutrons. They do not easily react or combine with other elements. These special gases were once far more abundant in the Earth's atmosphere.



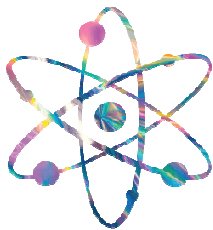
Utilizing Inert Noble Gas in the Scalar Vortex technology offers profound advantages. When these special gases contained in glass tubes are ionized, a powerful photon-rich-electrical field is sent out into the environment. A micro-current containing millions of harmonic frequencies gently penetrates the bio-quantum template. The scalar energy component carries the frequencies and subtle energy through the substance matrix without any distortion. In this way a comprehensive delivery of energy is achieved containing a holistic spectrum of photobiotic nutrition.

Photobiotic nutrition is the nutrition of light. It is the photon light energy we receive directly from the Sun or secondarily from our food. Photons emerge from the nonphysical realms and are pure information. All electromagnetic phenomena moves, manifests and changes through the exchange of photons on a quantum level.

Many believe these gases act as windows to other dimensional realities and are integral to higher states of consciousness that once prevailed on Earth. Walter Russel, renowned spiritual scientist, described the Noble Gases as holographic representatives of all the other elements in the universe or "octaves of integrating light."

Using Inert Noble Gases in the Scalar Vortex provide a wonderfully safe and easy-to-use means of achieving ever-accelerating levels of health and wellness.

*Dynamic enhancement provides extremely fast acting and comprehensive health benefits for anyone at any level of wellness.*



*Dynamically Enhanced*

Consuming nutritionals *Dynamically Enhanced* delivers maximum benefit to the core matrix supporting the 10,000 trillion cells that form our body.

***Dynamically Enhanced* is a proprietary feature of all Miracle Products.**