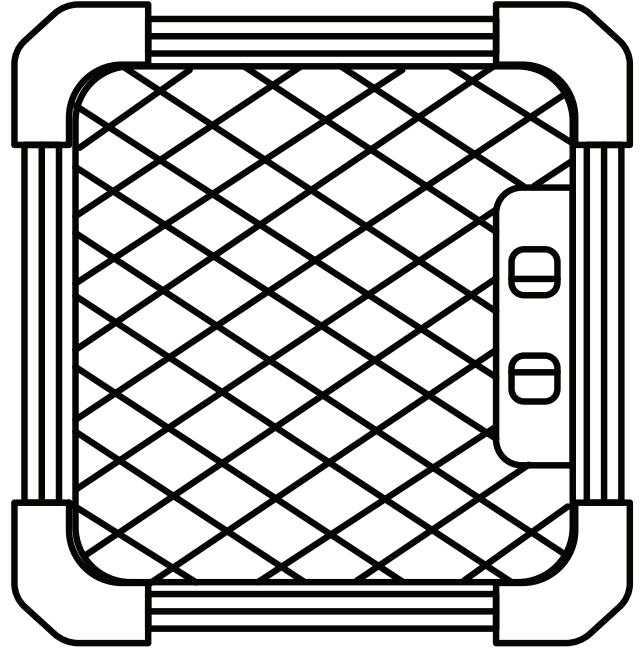


Evolv Modern Dog Crate

Repacking Instructions



1.0 Components

2.0 Repacking Instructions

1.0 Components

Components:



Front Door Panel



Side Door Panel



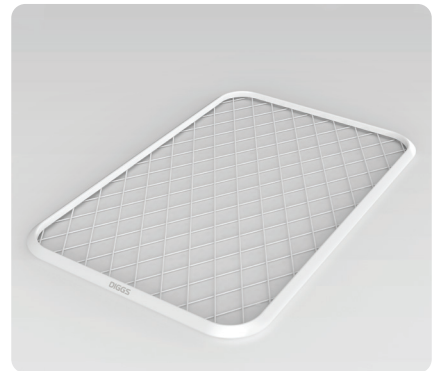
Side Wall Panel



Back Wall Panel



Base Frame



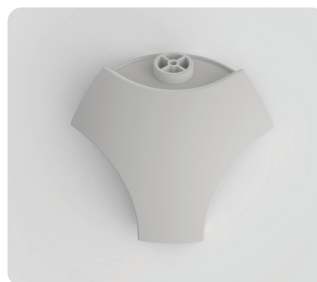
Ceiling Panel



Puppy Divider



Tray



**Bottom Corner
Connectors (4)**



**Top Corner
Connectors (4)**

2.0 Repacking Instructions

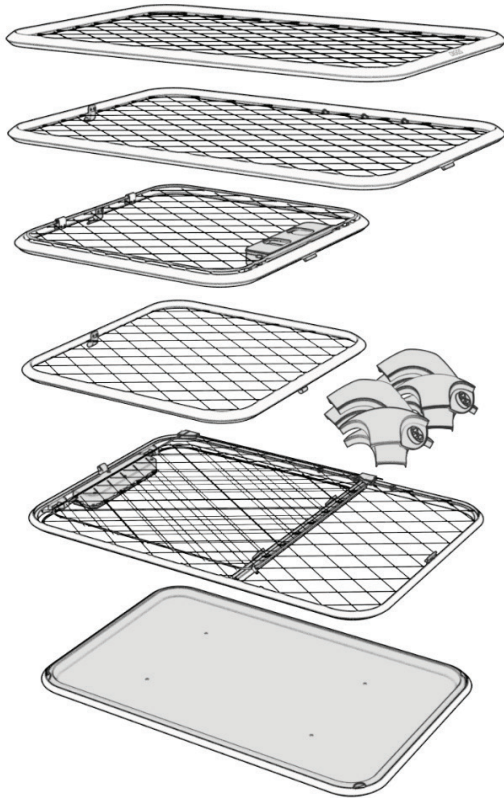
- 1** Gather the box and packing materials that your crate came in.
- 2** Place the Tray inside the Base Frame, and put both pieces into a foam sleeve. Fold any excess foam material tightly around the base frame, and place it on the floor.
- 3** Put the Side Door Panel into one of the foam sleeves, and place it on top of the side door panel with the handle facing down.
- 4** Put the puppy divider into the sleeve with the side door panel, and fold any excess foam material tightly around the panel.
- 5** Put the Back Panel into one of the foam sleeves. Fold any excess foam material tightly around the panel, and place it on top of the side door panel. It should be stacked to one side so the edges line up, not in the middle.
- 6** Put the Front Door Panel into one of the foam sleeves. Fold any excess foam material tightly around the panel, and place it directly on top of the Back Panel.
- 7** Locate the U shaped block foam. Hold the Front Door Panel and Back Door Panels together and slide them over the edges.
- 8** Wrap the corner connectors in foam sheeting and place them in the empty space next to the panel and front door panel.
- 9** Put the Side Panel into one of the foam sleeves. Fold any excess foam material tightly around the panel, and place it on top of the Front Door and Corner Connectors.

2.0 Repacking Instructions

- 10** Put the Ceiling Panel into the last remaining foam sleeve. Fold any excess foam material tightly around the panel, and place it on top of the Side Panel.
- 11** Locate the corner shaped foam blocks. Place 2 of them around the corners of the stack on the side that has the back panel and front door.
- 12** Place the box on the floor and align its opening with the foam corner blocks.
- 13** Carefully slide all of the stacked parts into the box. This may require 2 people depending on the size of your crate.
- 14** Place the last 2 blocks of foam inside the box over the corners of the stacked panels.
- 15** Close the flaps of the box and tape it shut.

2.0 Repacking Instructions

Stacking order



Stacked parts for reference

