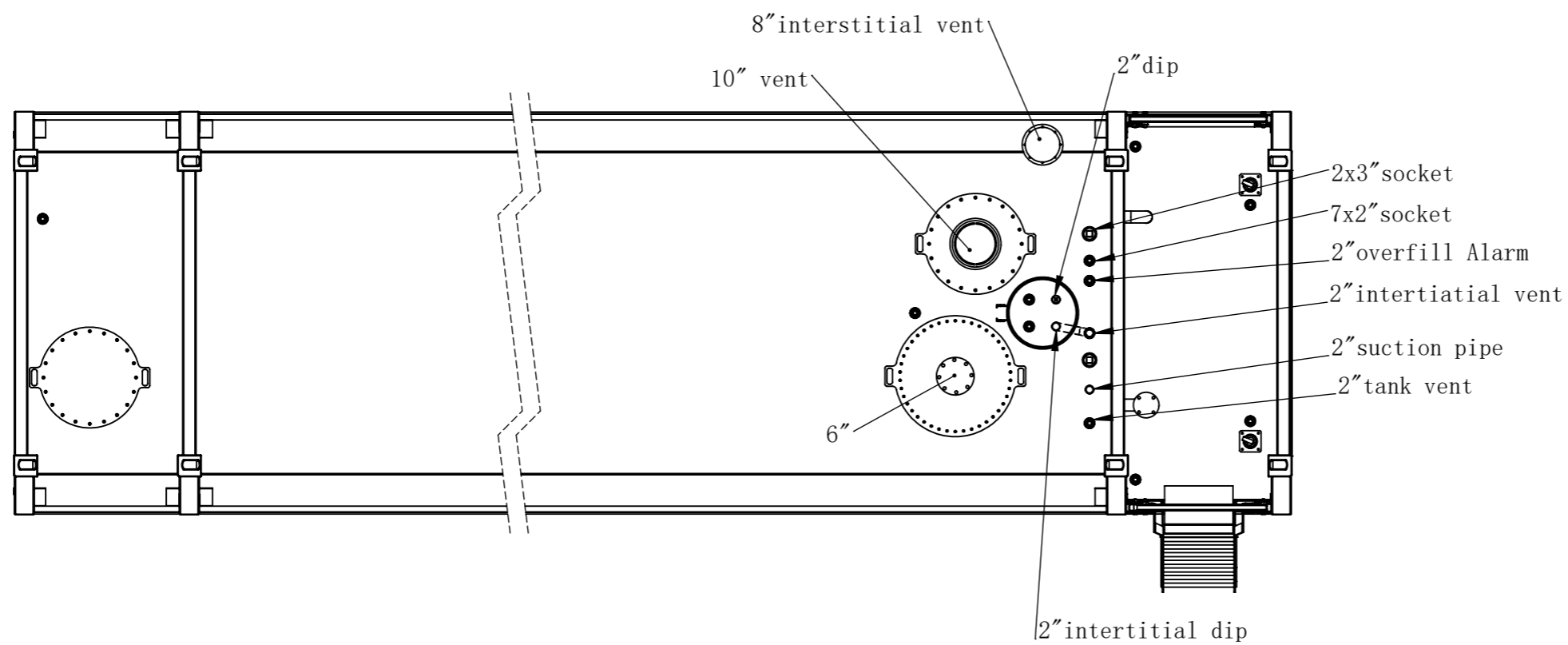
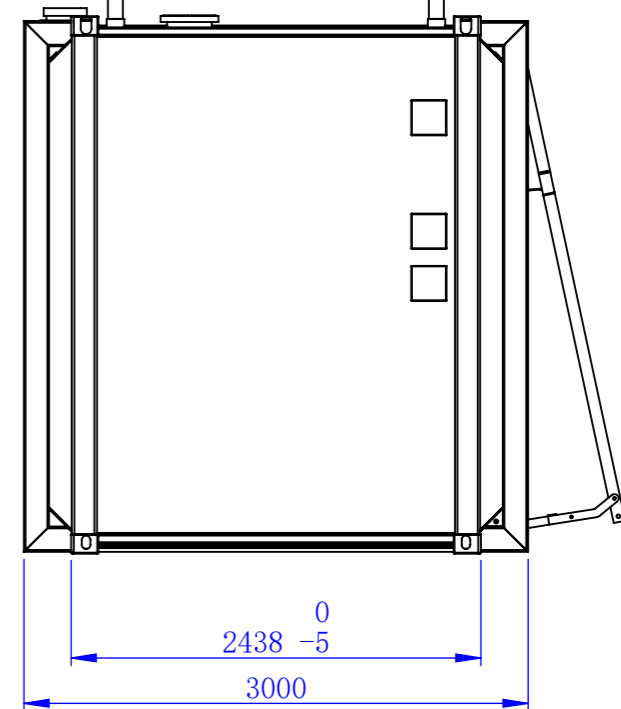
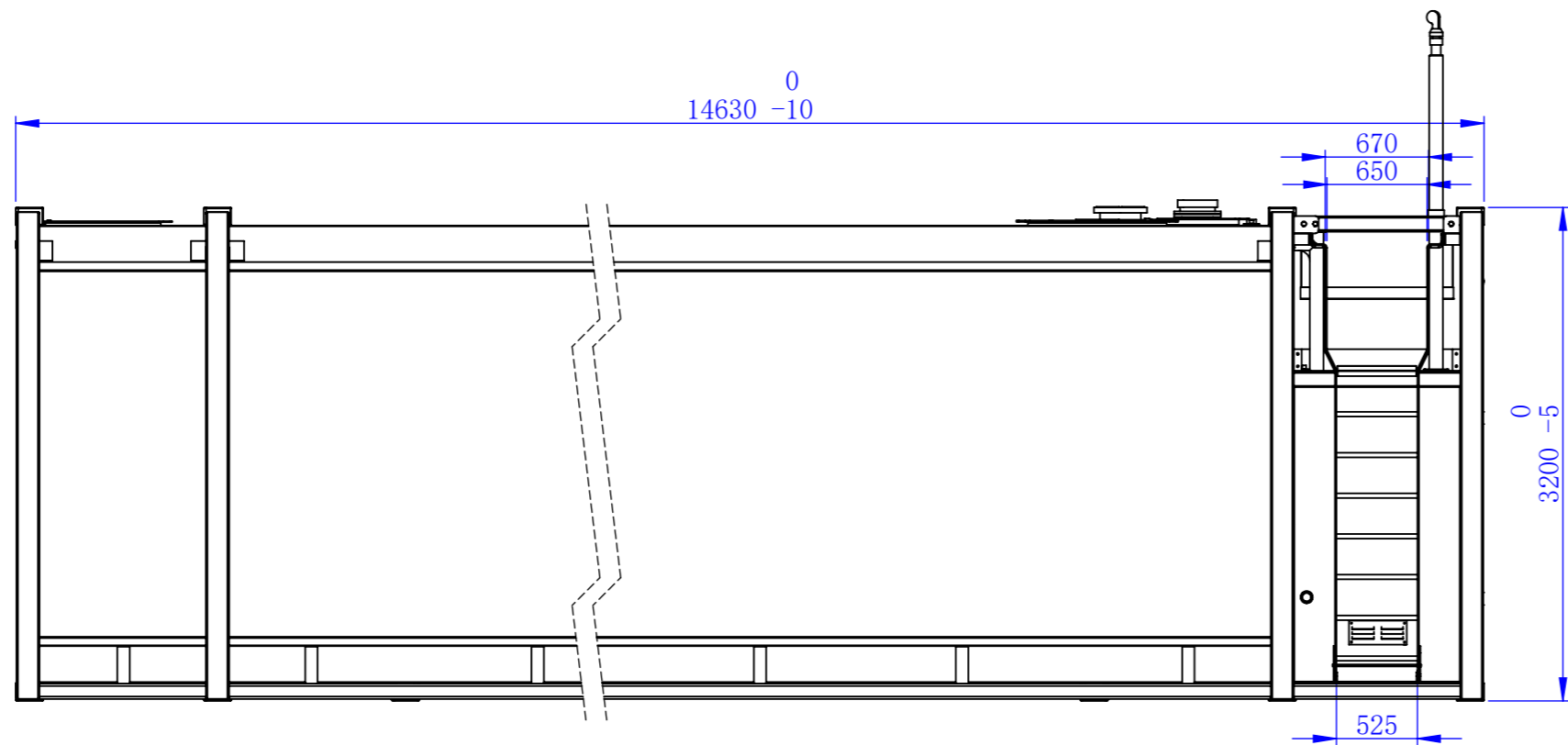


TANK DATA	
CONTENT	DIESEL
DESIGNED TO	AS1940
BUILT TO	AS1692, CAT. 3
CORROSION ALLOW	0mm
GROSS VOLUME	112500L
HYD. TEST PRESSURE	21KPa
SAFE FILL LEVEL	106500L
N. D. T.	Refer fabrication&assembly plan
TOTAL MASS	19148. 83Kg (EMPTY)

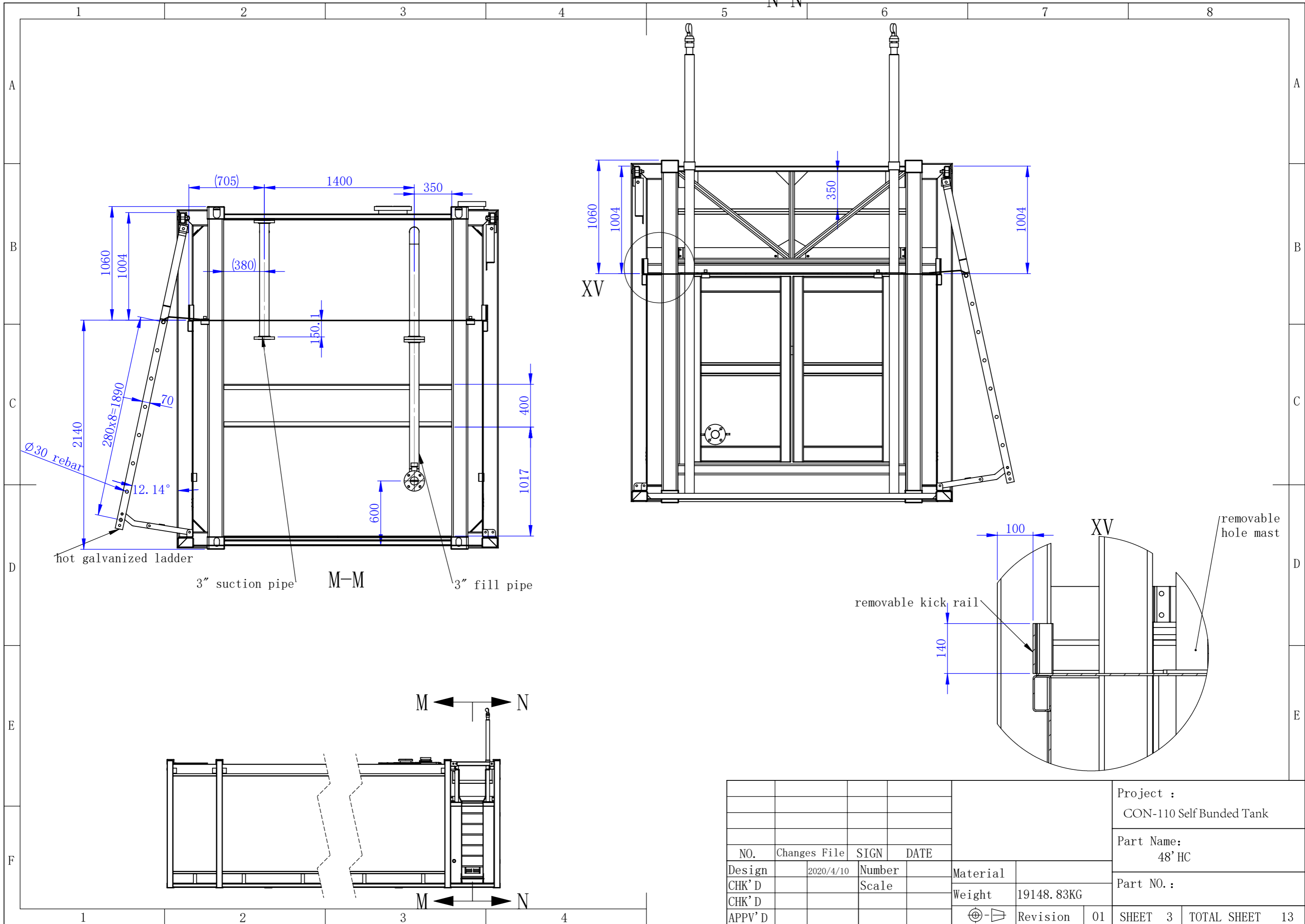
07					
06					
05					
04					
03					
02					
01					
REV:	DATE:	REVISION:	DRAWN:	CHECKED:	APPROVED:



DRAWN:	SAVING DATE:	TITLE:		
	2020/4/10	48' HC	CON-110 Self Bunded Tank	
CHECKED:	DATE:	DRAWING NO. :	REV:	A3
CLIENT:	DATE:		SHEET:	
			1 of 13	
APPROVED:	DATE:	PURCHASE ORDER NO. :	Scale:	⊕ - ▷
Material:			No scale	
Weight:	19148. 83KG			



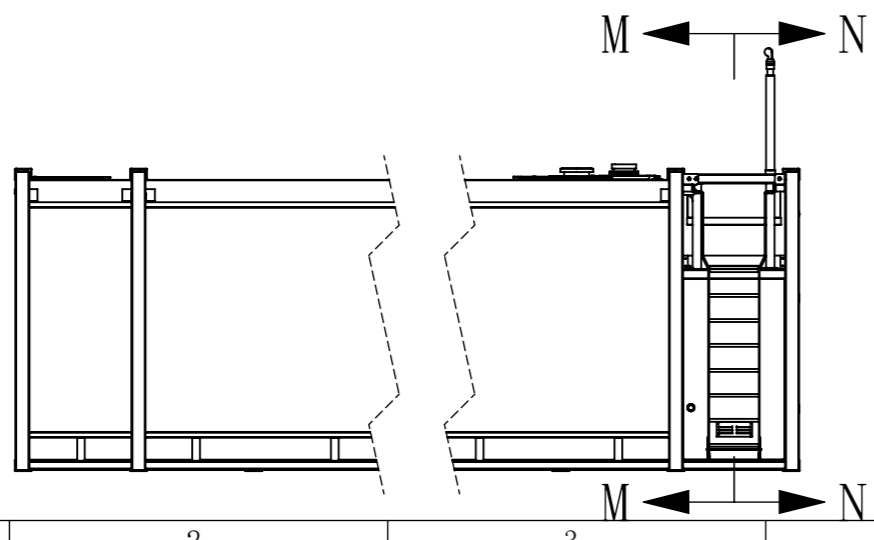
						Project :	
						CON-110 Self Bunded Tank	
						Part Name:	
						48' HC	
						Part NO. :	
NO.	Changes	File	SIGN	DATE	Material		
Design		2020/4/10			Weight	19148.83KG	
CHK' D					⊕-▷	Revision	01
CHK' D					SHEET 2 TOTAL SHEET 13		
APPV' D							



(705) 1400 350
 1060 1004 (380) 150.1
 2140 280x8=1890 70 12.14°
 Ø30 rebar
 hot galvanized ladder
 3" suction pipe
 M-M
 3" fill pipe
 600 400 1017

N-N
 1060 1004 350 1004
 XV

XV
 removable kick rail
 100 140
 removable hole mast



				Project :		CON-110 Self Bunded Tank	
				Part Name:		48' HC	
				Part NO. :			
NO.	Changes	File	SIGN	DATE	Material		
Design		2020/4/10			Weight	19148.83KG	
CHK' D					Revision	01	
CHK' D					SHEET	3	TOTAL SHEET
APPV' D							13